

## Supplementary Information

# SETDB1 Triple Tudor Domain Ligand, (*R,R*)-59, Promotes Methylation of Akt1 in Cells.

Mélanie Uguen<sup>1</sup>, Yu Deng<sup>2,3</sup>, Fengling Li<sup>4</sup>, Devan J. Shell<sup>1</sup>, Jacqueline L. Norris-Drouin<sup>1</sup>, Michael A. Stashko<sup>1</sup>, Suzanne Ackloo<sup>4</sup>, Cheryl H. Arrowsmith<sup>4</sup>, Lindsey I. James<sup>1,3</sup>, Pengda Liu<sup>2,3</sup>, Kenneth H. Pearce<sup>1,3</sup>, Stephen V. Frye<sup>1,3,\*</sup>

<sup>1</sup>UNC Eshelman School of Pharmacy, Center for Integrative Chemical Biology and Drug Discovery, Chemical Biology and Medicinal Chemistry, University of North Carolina at Chapel Hill, Chapel Hill, NC 27599, USA.

<sup>2</sup>Department of Biochemistry and Biophysics, The University of North Carolina at Chapel Hill, Chapel Hill, NC 27599, USA.

<sup>3</sup>Lineberger Comprehensive Cancer Center, University of North Carolina at Chapel Hill School of Medicine, Chapel Hill, NC 27599, USA.

<sup>4</sup>Structural Genomics Consortium, University of Toronto, Toronto, ON M5G 1L7, Canada.

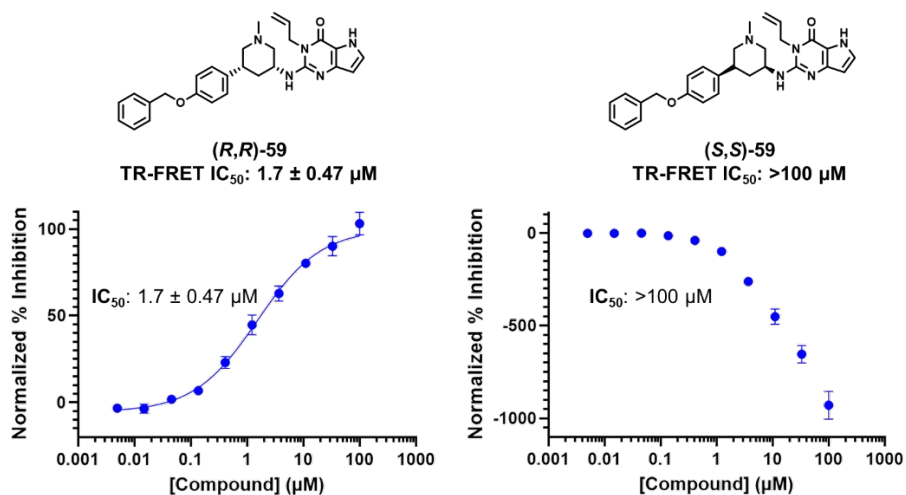
\*Corresponding author email address: svfrye@email.unc.edu

### Table of Contents

1. Supplementary Figures .....	S2
1.1. Figure S1 .....	S2
1.2. Figure S2 .....	S2
1.3. Figure S3 .....	S3
2. NMR and LC-MS Data.....	S4
2.1. <sup>1</sup> H NMR and <sup>13</sup> C NMR of ( <i>R,R</i> )-59 .....	S4
2.2. LC-MS data for ( <i>R,R</i> )-59 .....	S5
2.3. <sup>1</sup> H NMR and <sup>13</sup> C NMR of ( <i>S,S</i> )-59.....	S5
2.4. LC-MS data for ( <i>S,S</i> )-59 .....	S6

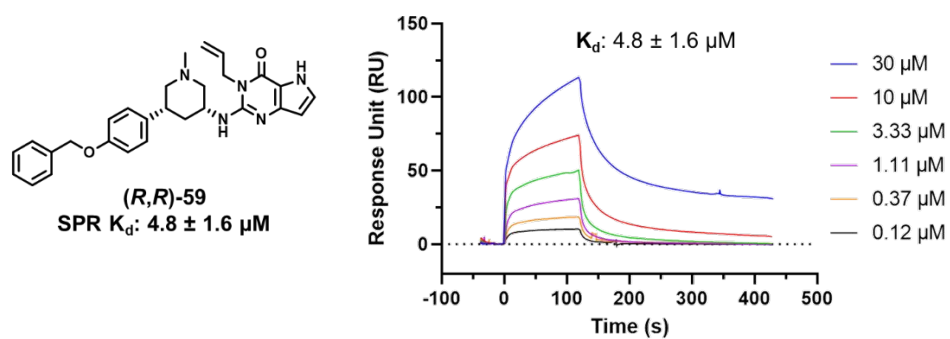
## 1. Supplementary Figures

### 1.1. Figure S1



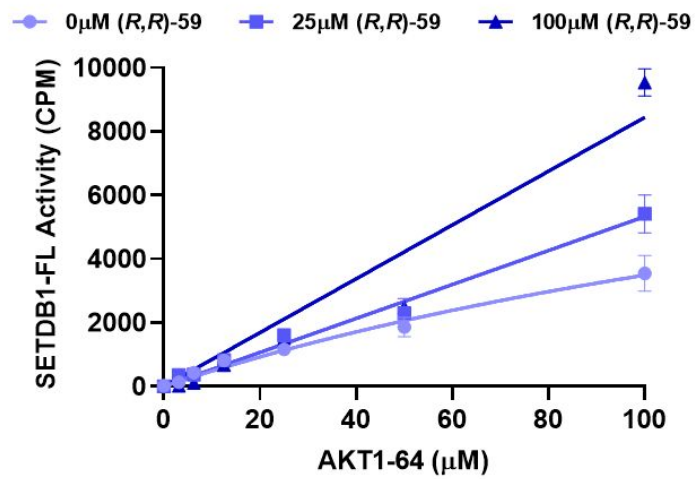
**Figure S1.** TR-FRET evaluation of (*R,R*)-59 and (*S,S*)-59 for the displacement of H3K9Me2K14Ac from the Triple Tudor Domain of SETDB1.

### 1.2. Figure S2



**Figure S2.** SPR evaluation of (*R,R*)-59 for the 3TD of SETDB1.

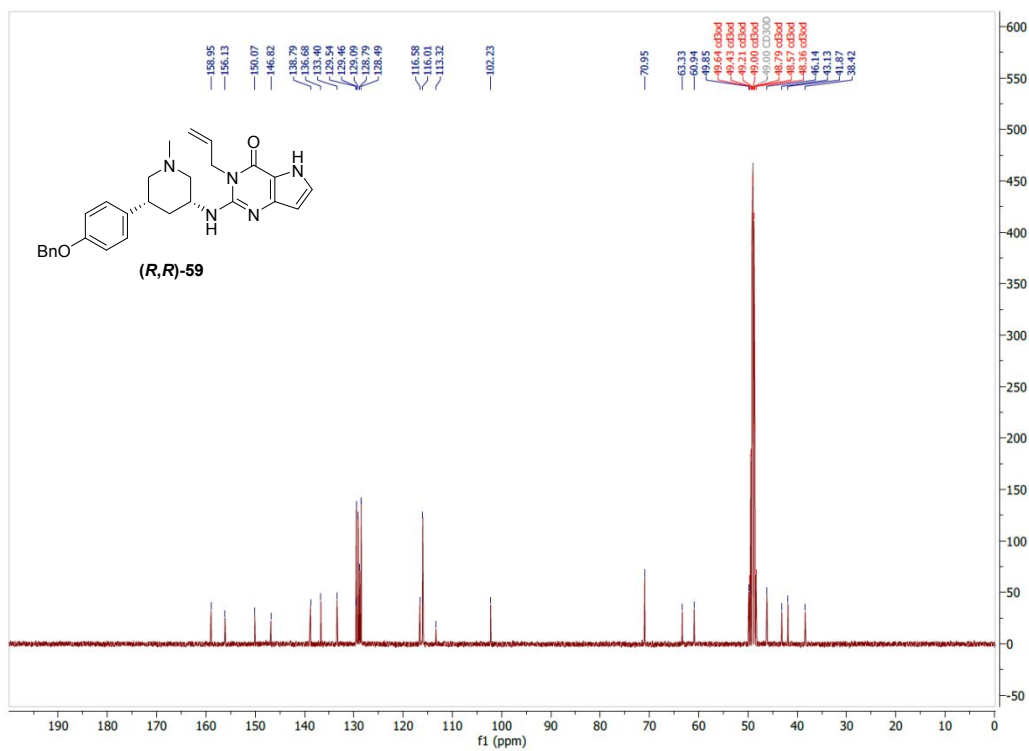
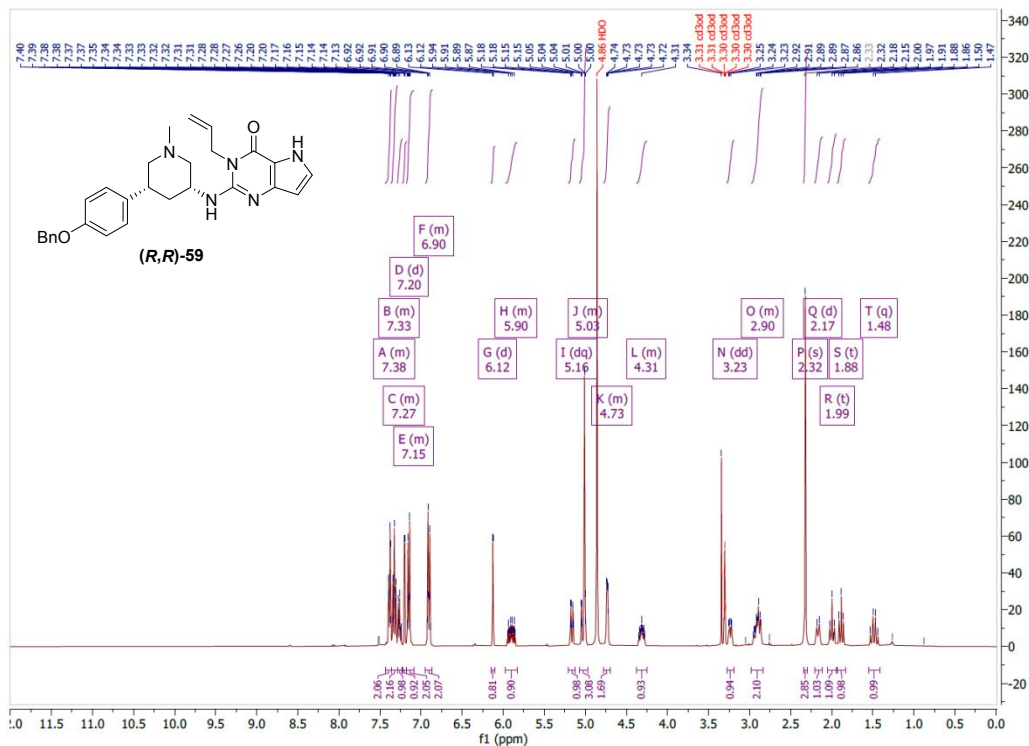
### 1.3. Figure S3



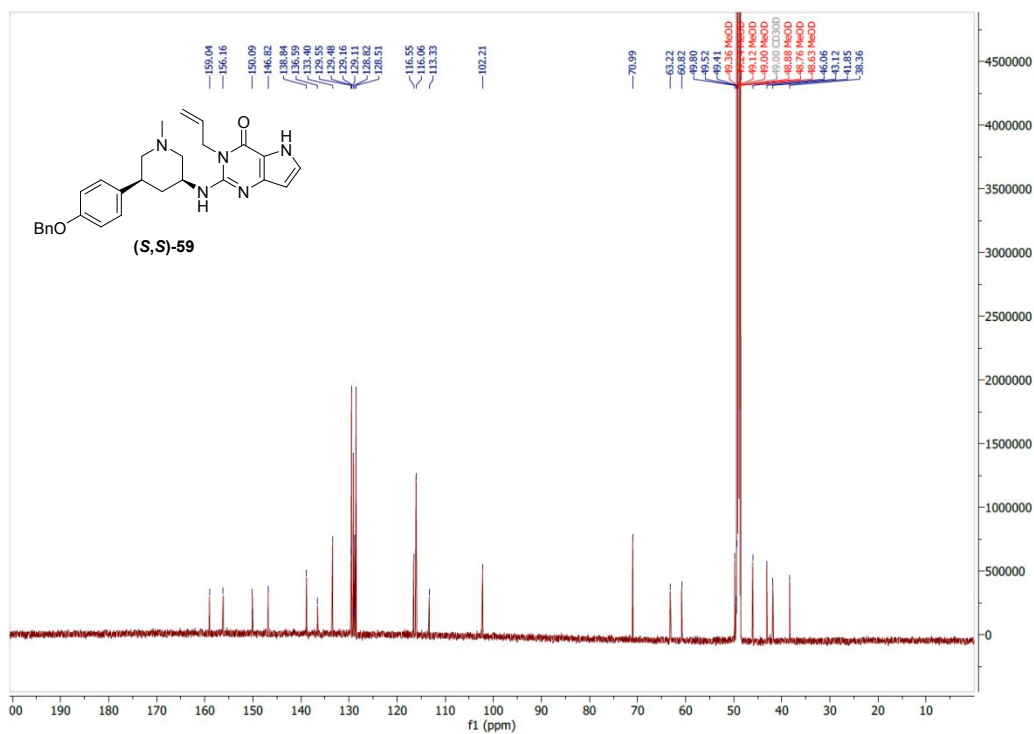
**Figure S3.** Kinetic evaluation of the influence of Akt1-K64 on the enzymatic activity of SETDB1 with and without (R,R)-59.

## 2. NMR and LC-MS Data

### 2.1. $^1\text{H}$ NMR and $^{13}\text{C}$ NMR of (*R,R*)-59







## 2.4. LC-MS data for (S,S)-59

