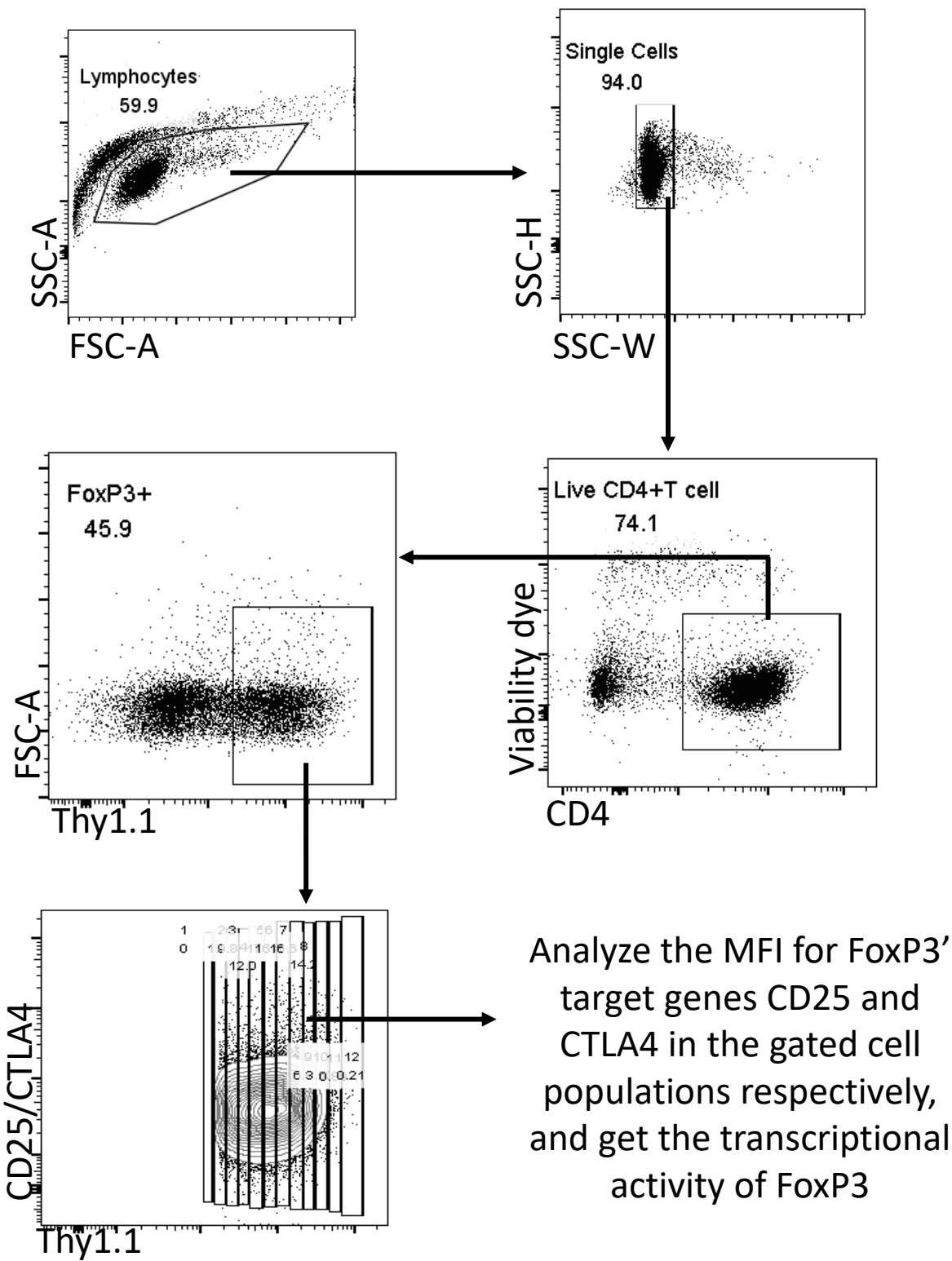

Supplementary information

FOXP3 recognizes microsatellites and bridges DNA through multimerization

In the format provided by the authors and unedited

Supplementary Figure 1

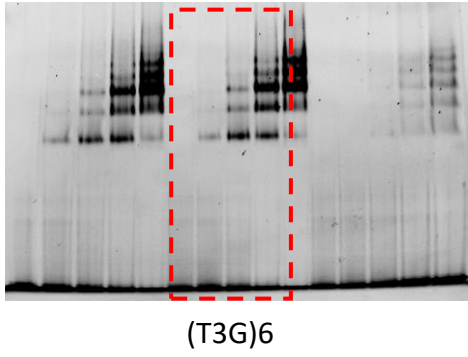
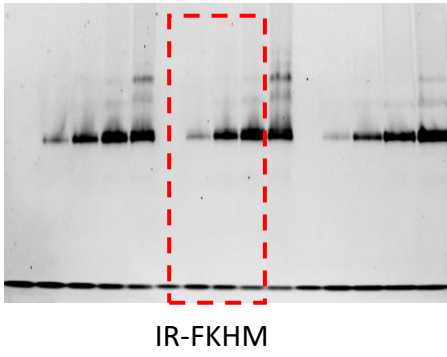
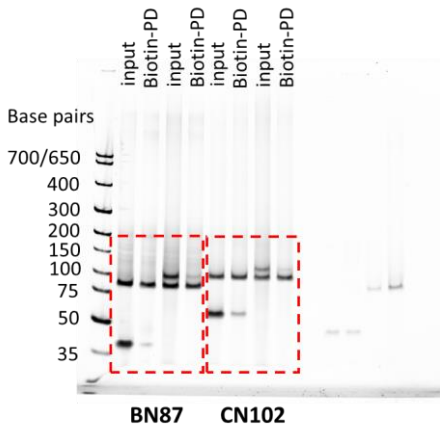


Analyze the MFI for FoxP3' target genes CD25 and CTLA4 in the gated cell populations respectively, and get the transcriptional activity of FoxP3

Gating strategies for FACS analysis

Supplementary Figure 2

For Figure 1

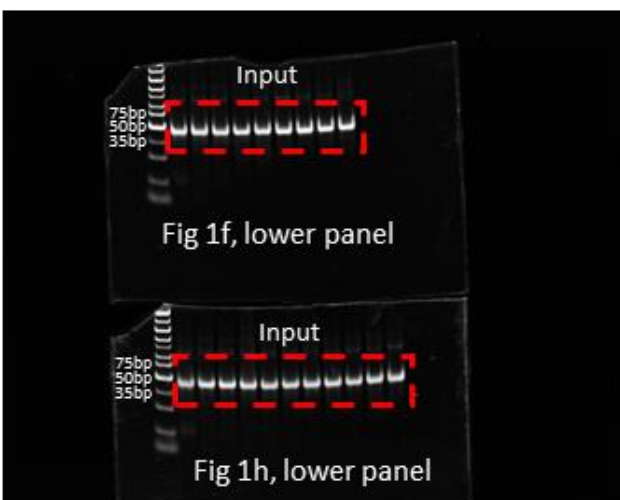
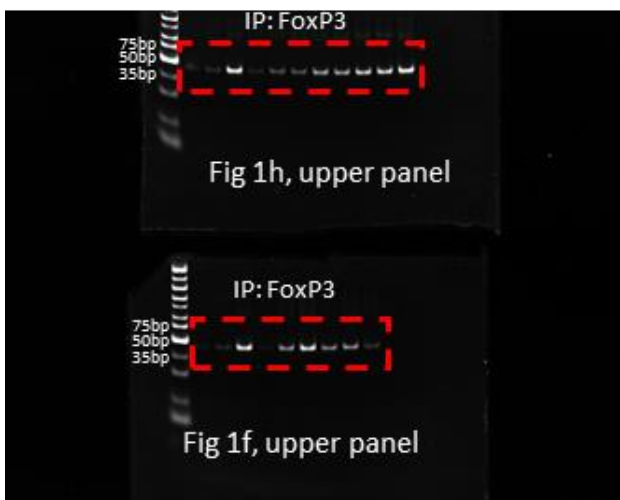


IR-FKHM

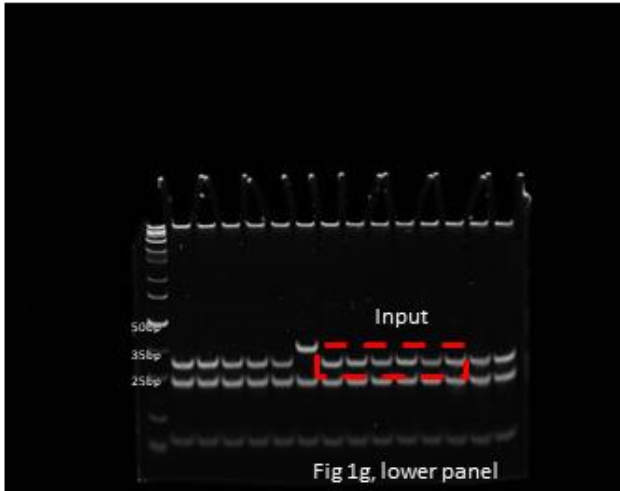
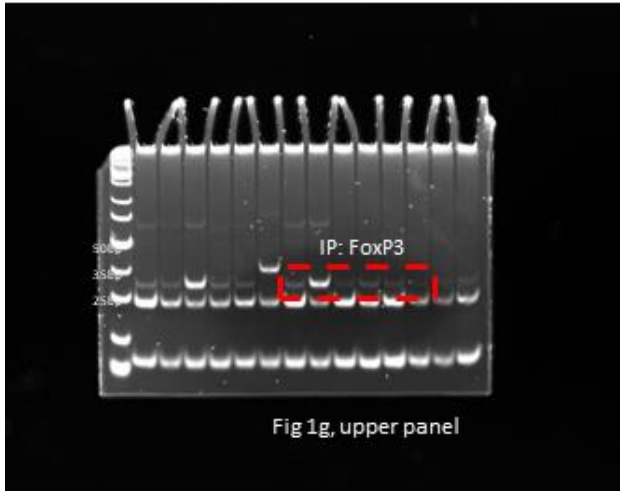
(T3G)6

Used in Figure 1i

Used in Figure 1c. Right panel.

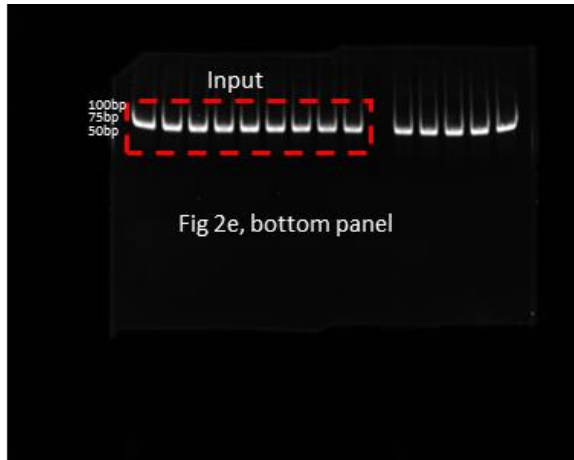
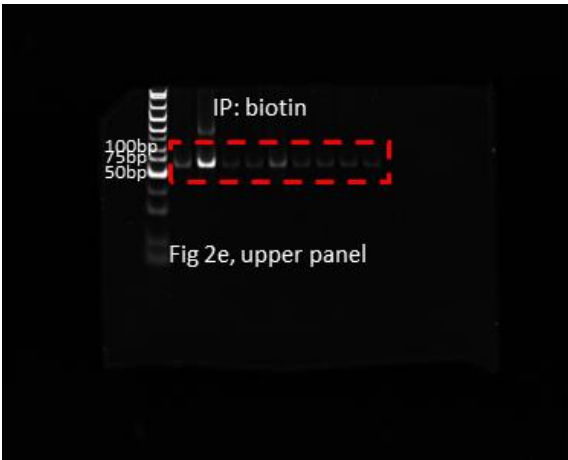


Used in Figure 1f and 1h

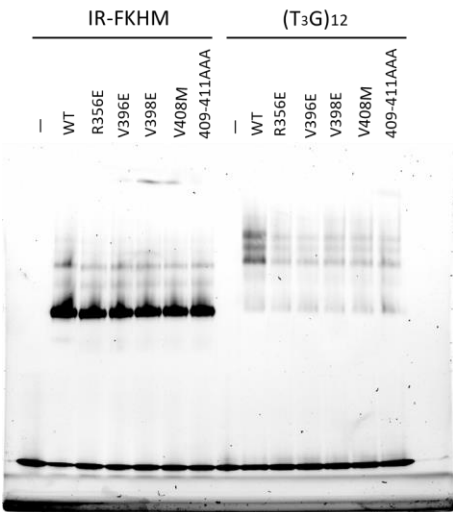


Used in Figure 1g

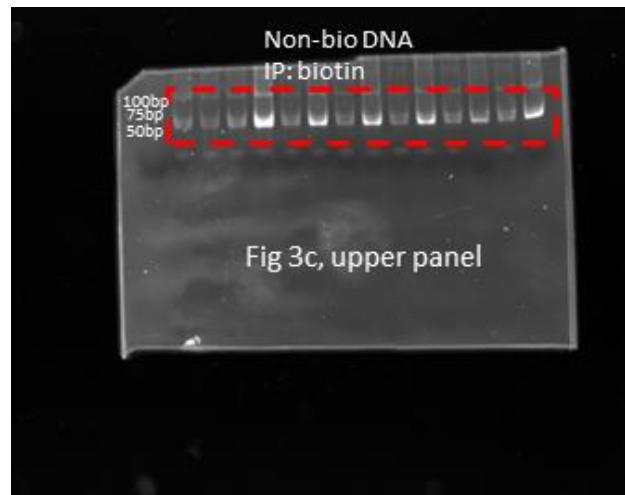
For Figure 2 and Figure 3



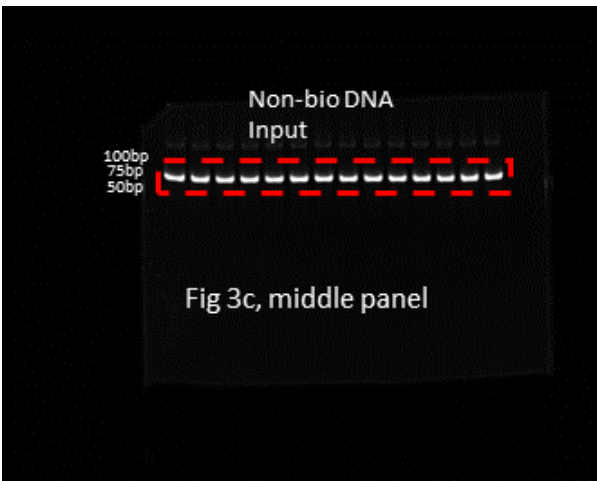
Used in Figure 2e



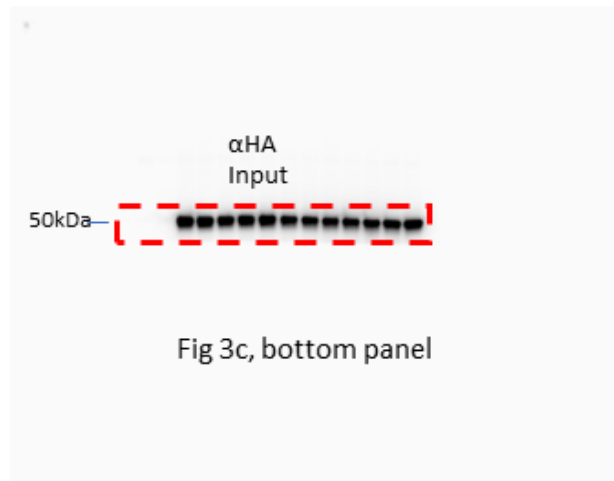
Used in Figure 3b



Used in Figure 3c, upper panel

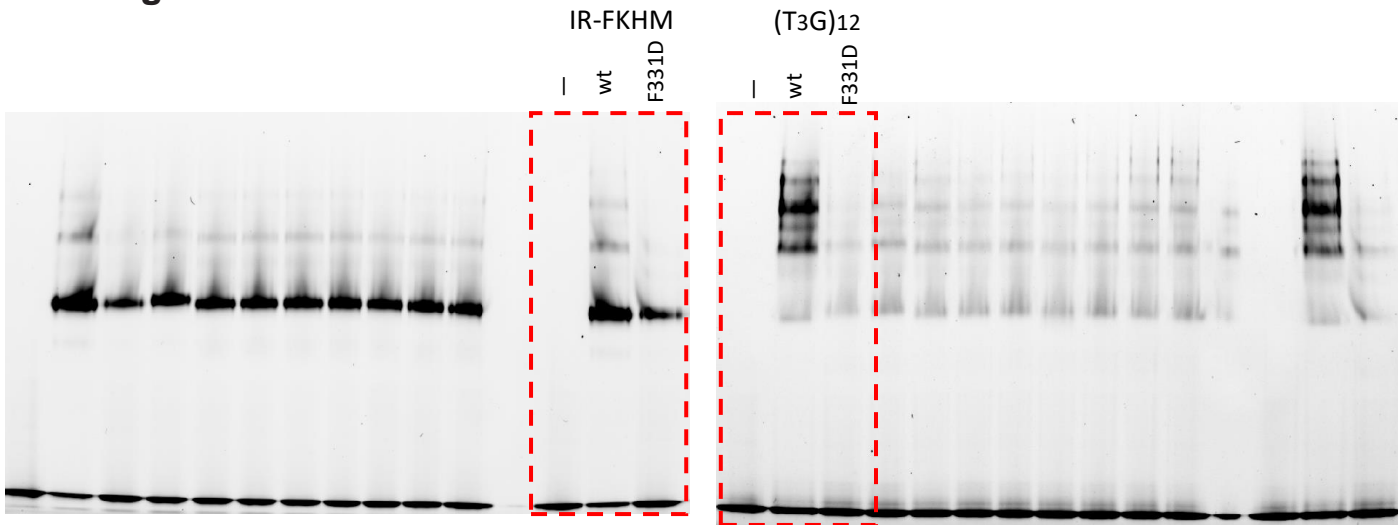


Used in Figure 3c, middle panel

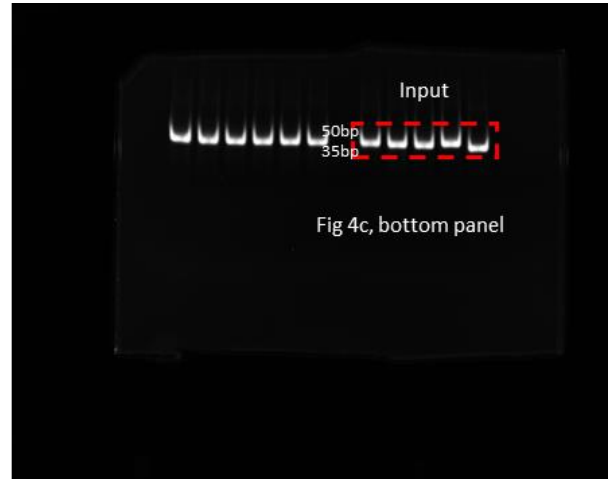
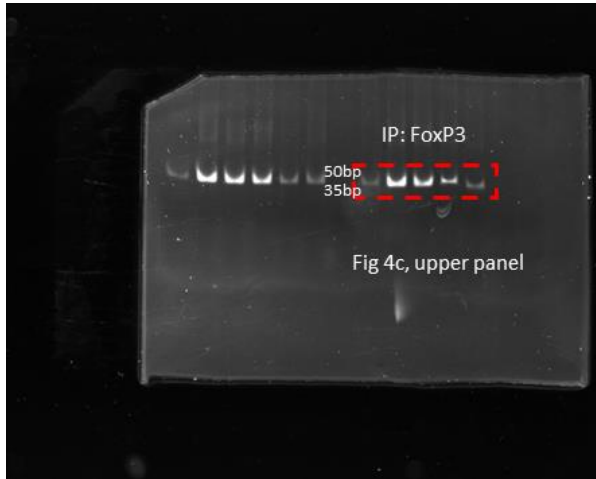


Used in Figure 3c, bottom panel

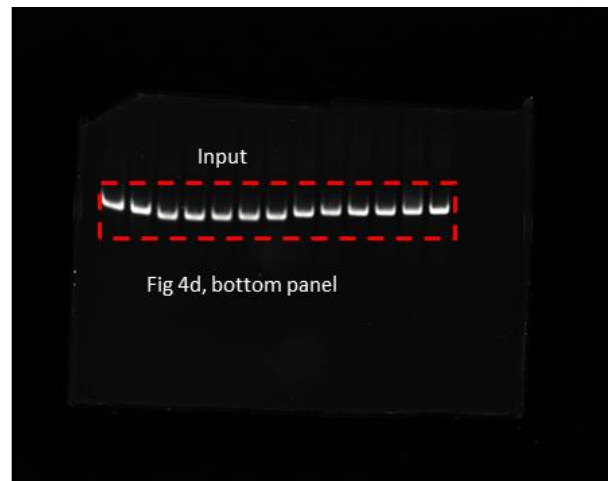
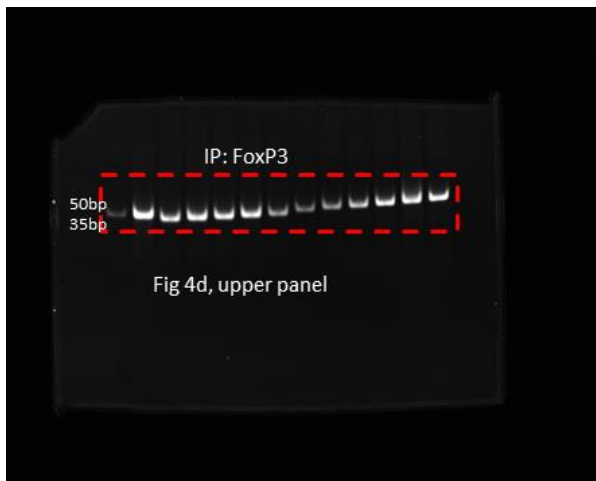
For Figure 4



Used in Figure 4b

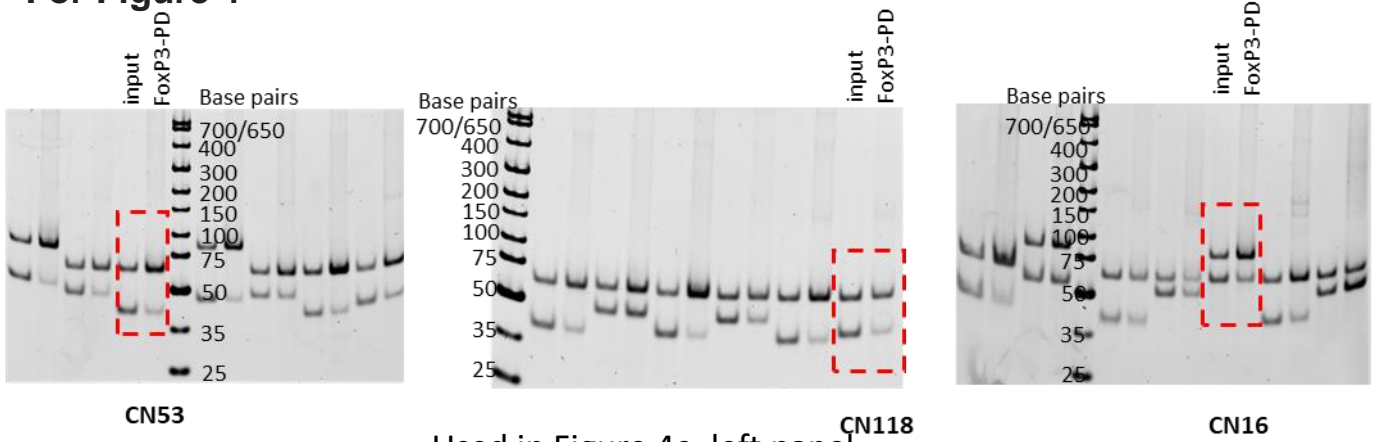


Used in Figure 4c

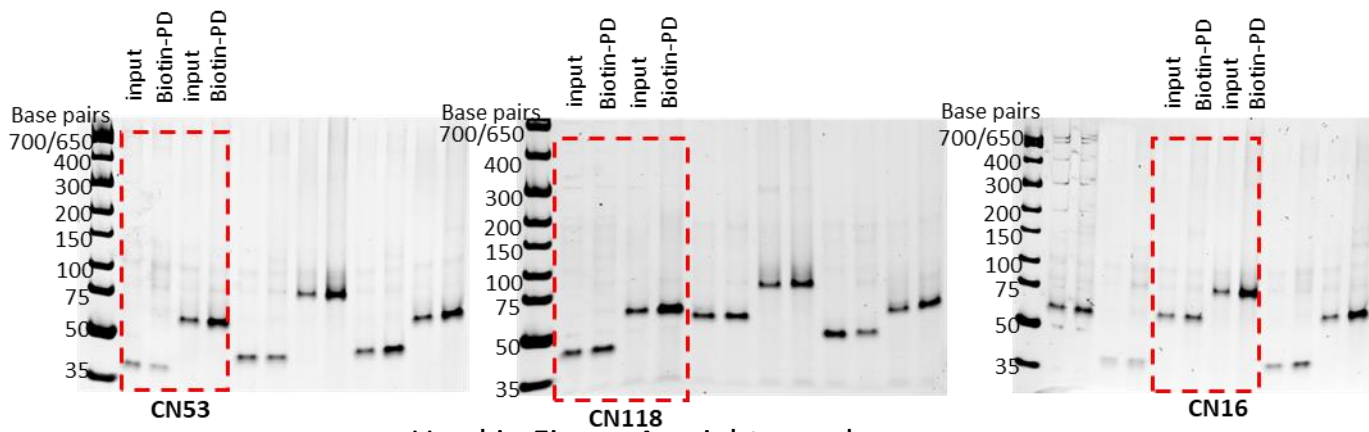


Used in Figure 4d

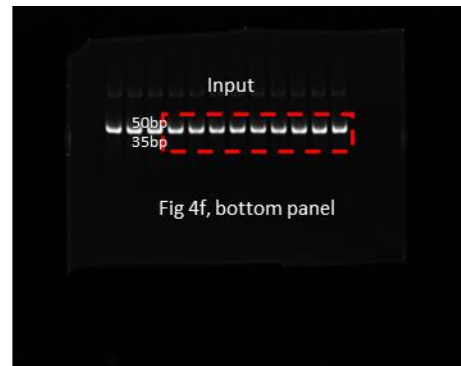
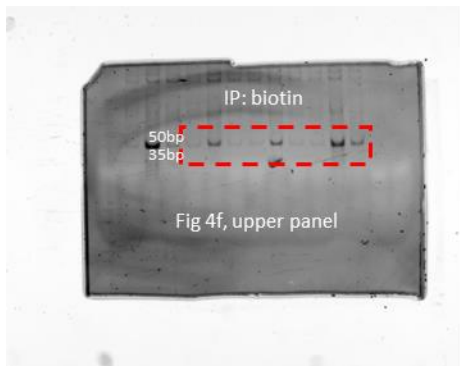
For Figure 4



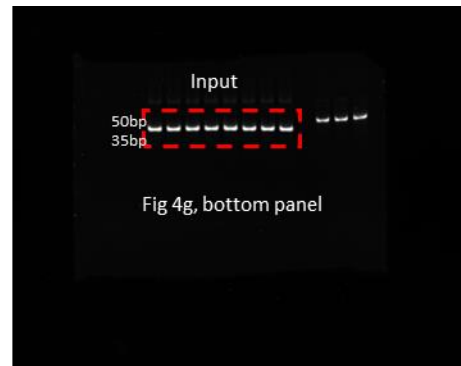
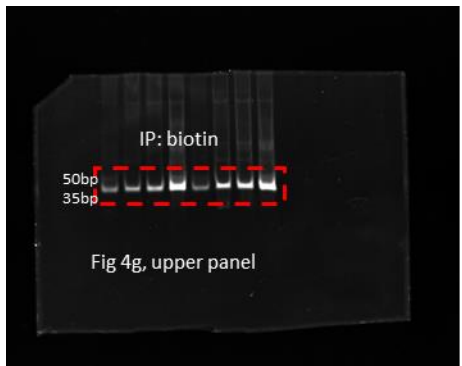
Used in Figure 4e, left panel



Used in Figure 4e, right panel

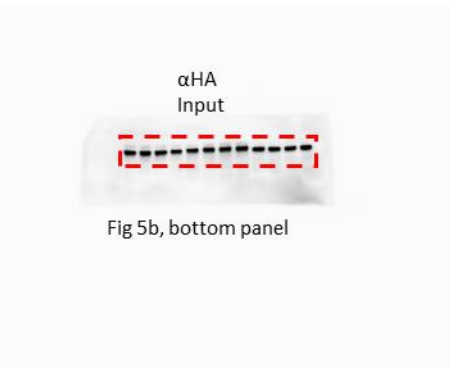
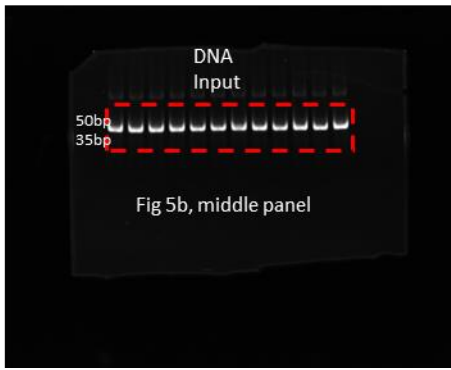
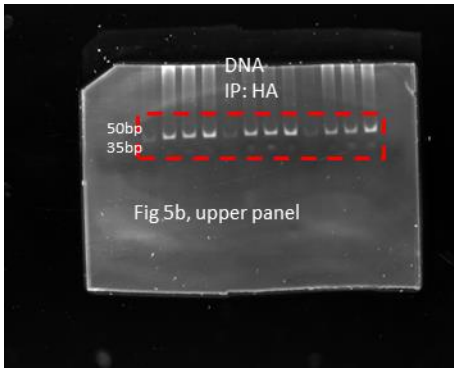


Used in Figure 4f

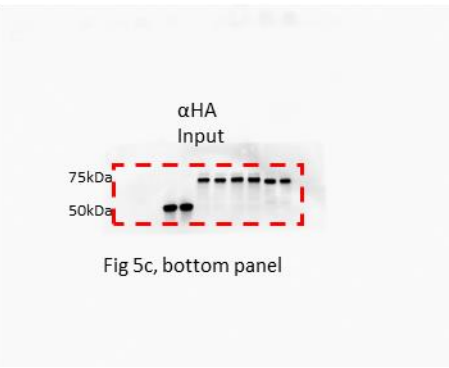
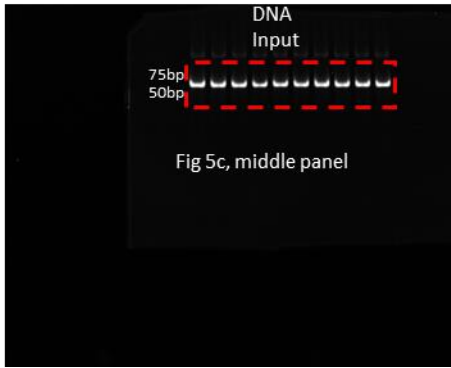
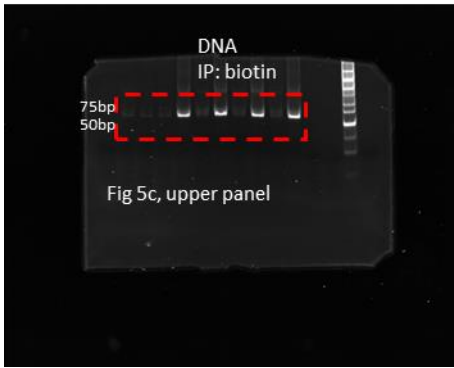


Used in Figure 4g

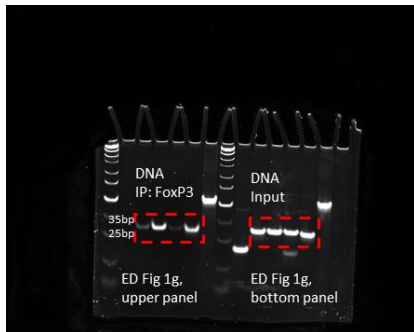
For Figure 5 and ED Figure 1



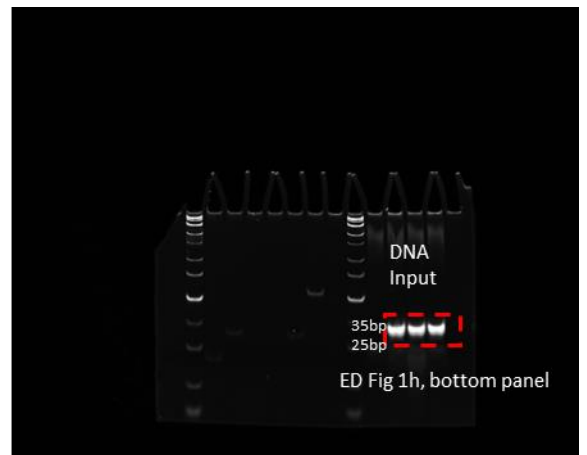
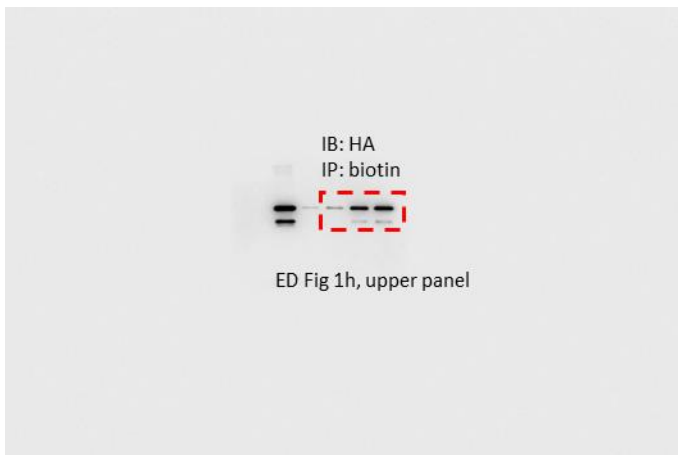
Used in Figure 5b



Used in Figure 5c

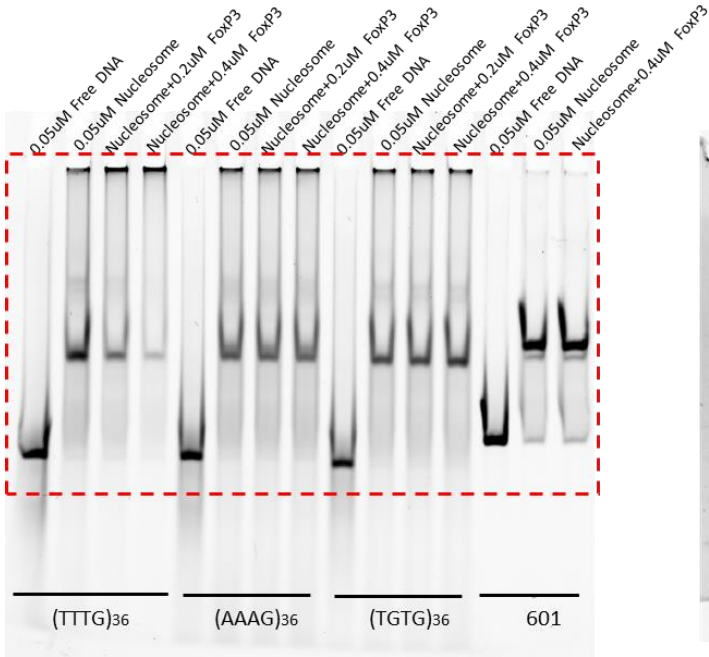


Used in ED Figure 1g

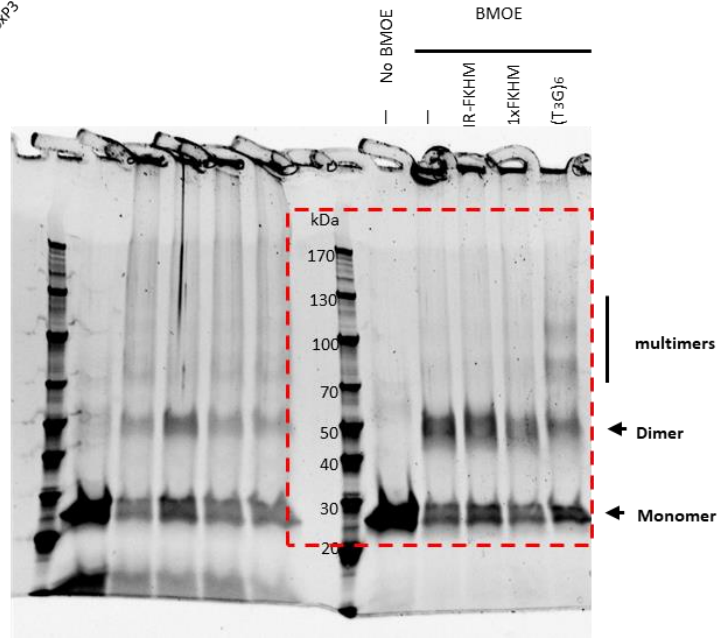


Used in ED Figure 1h

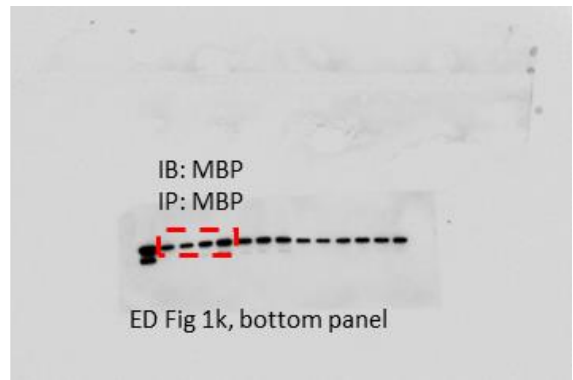
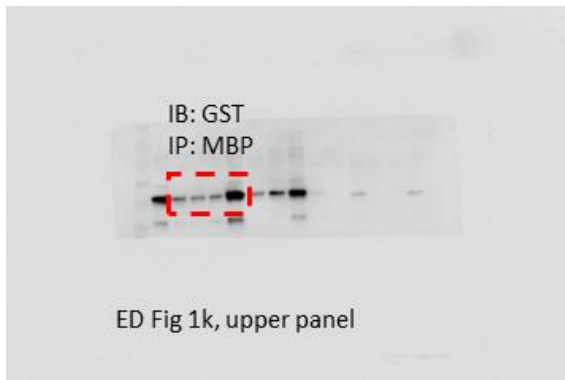
For ED Figure 1



Used in ED Figure 1i

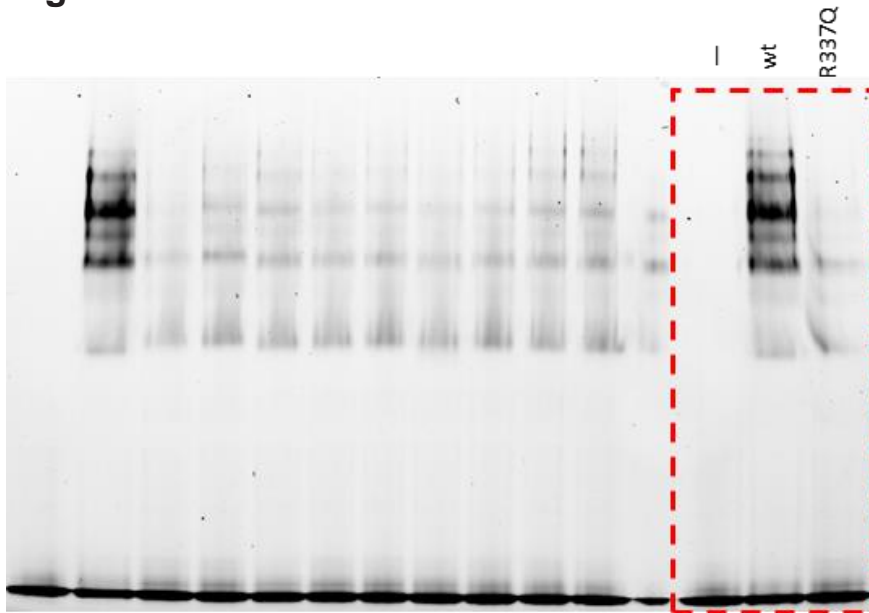


Used in ED Figure 1j

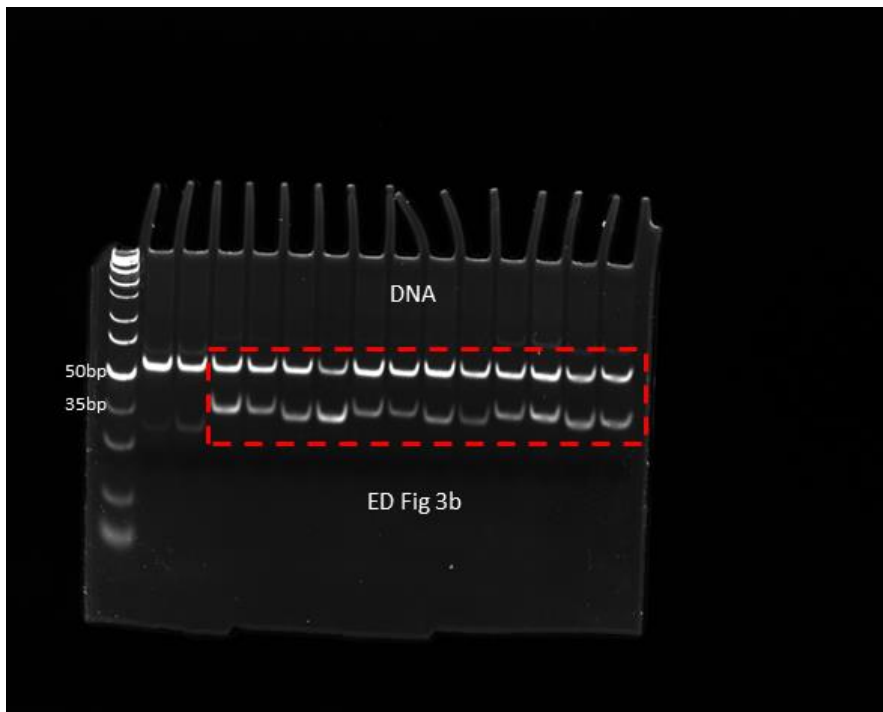


Used in ED Figure 1k

For ED Figure 2 and 3

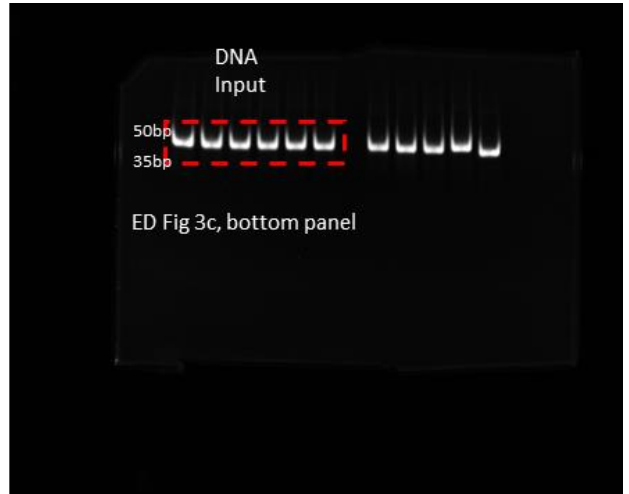
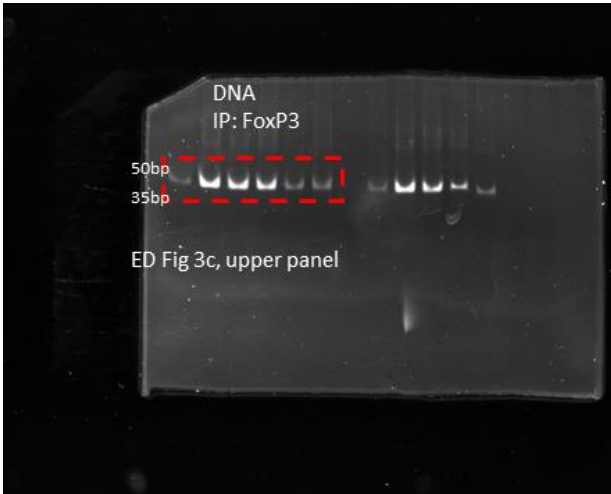


Used in ED Figure 2h

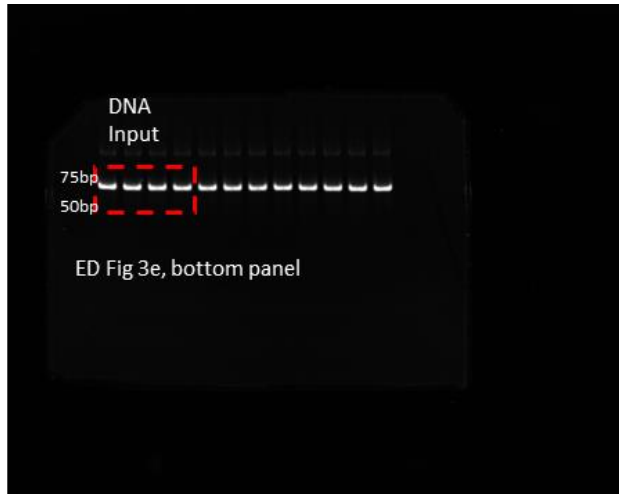
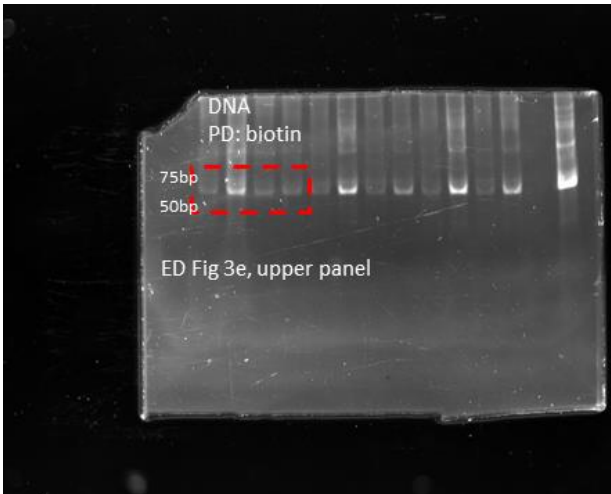


Used in ED Figure 3b

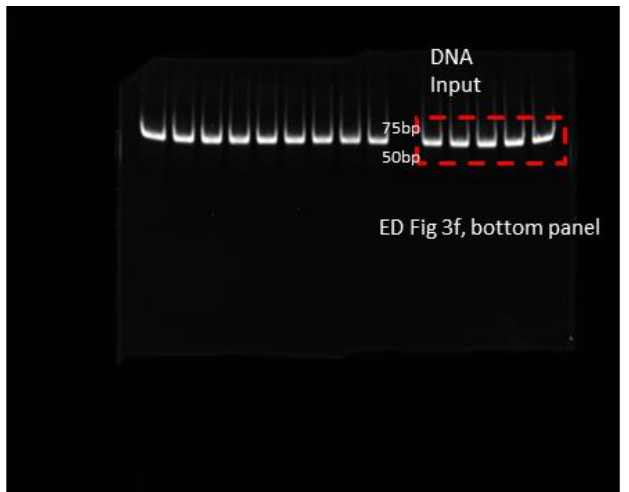
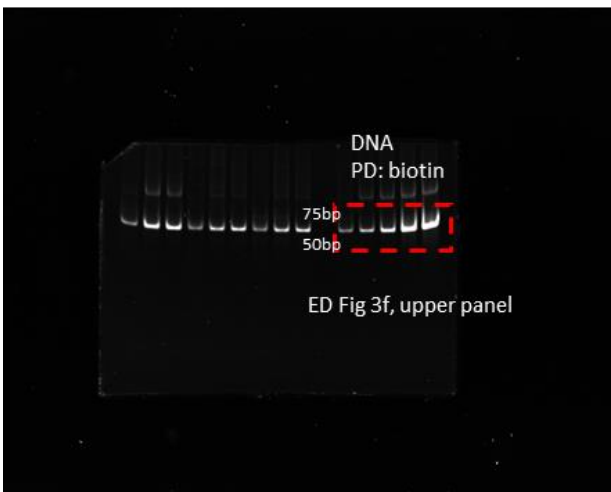
For ED Figure 3



Used in ED Figure 3c

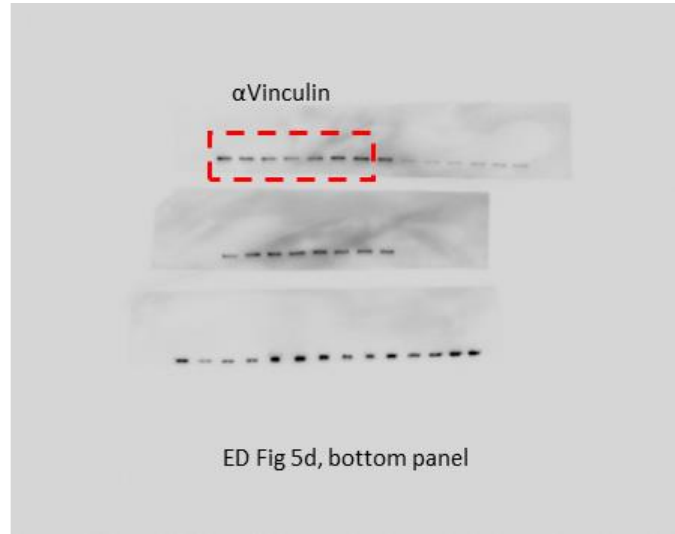
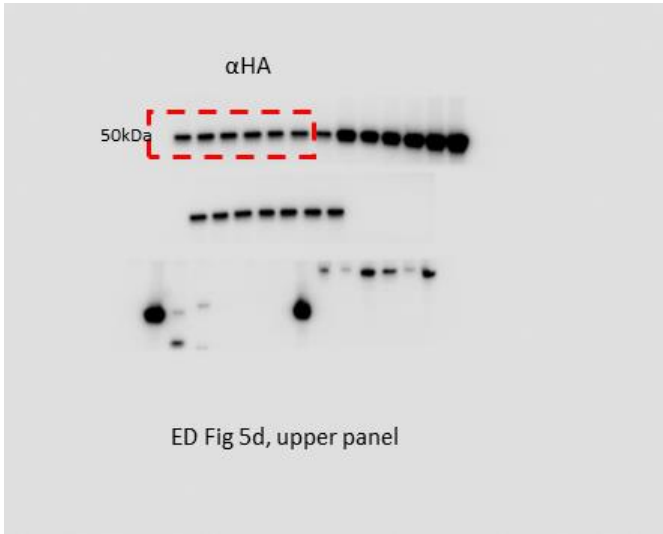


Used in ED Figure 3e

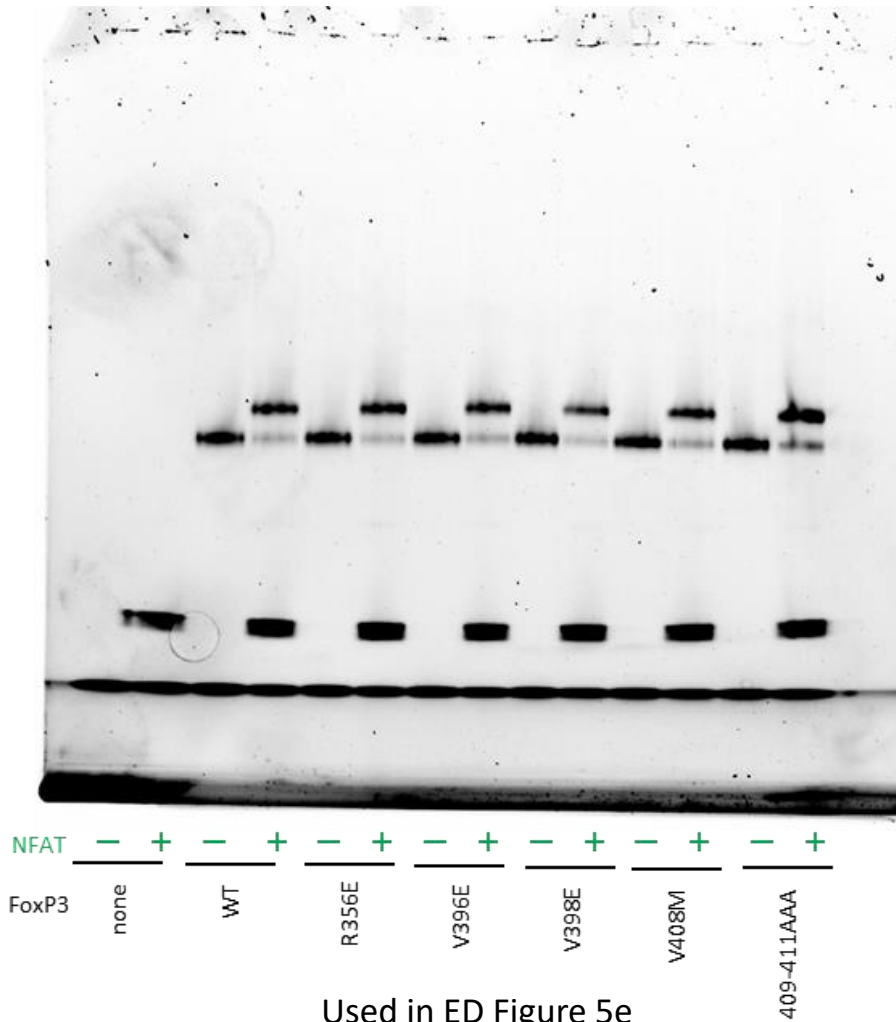


Used in ED Figure 3f

For ED Figure 5



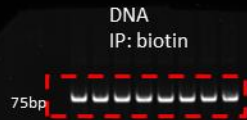
Used in ED Figure 5d



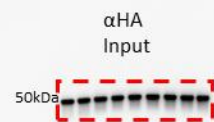
For ED Figure 6



ED Fig 6a, upper panel

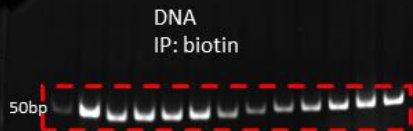


ED Fig 6a, middle panel



ED Fig 6a, bottom panel

Used in ED Figure 6a



ED Fig 6b, upper panel

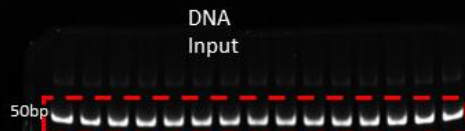


ED Fig 6b, bottom panel

Used in ED Figure 6b



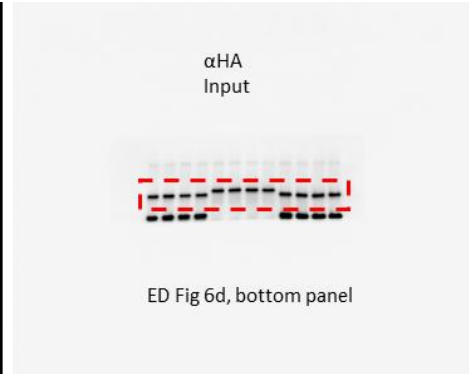
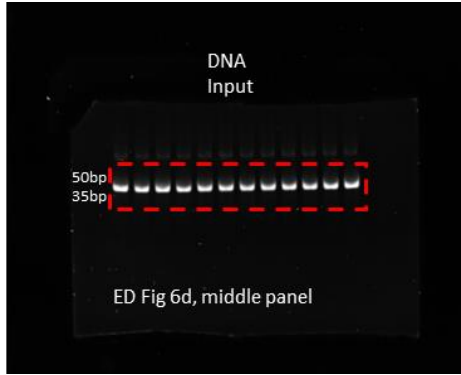
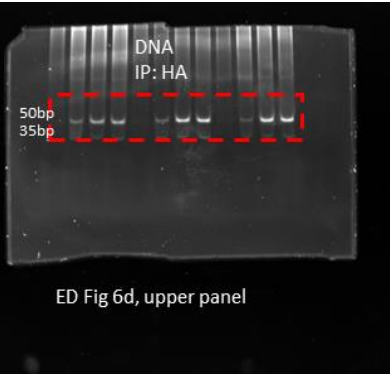
ED Fig 6c, upper panel



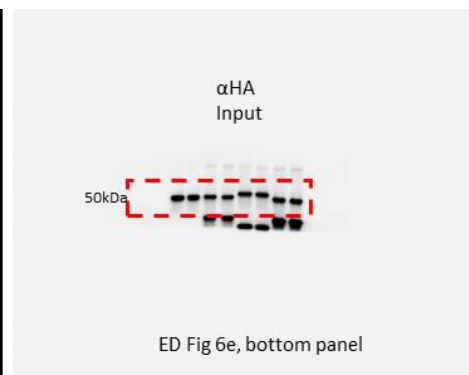
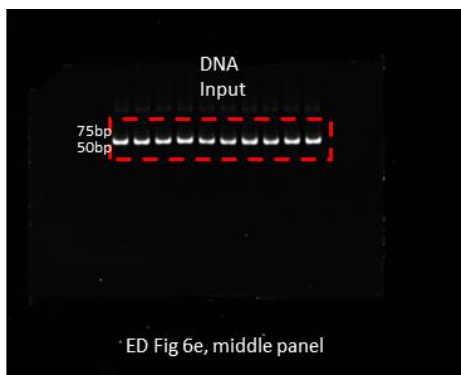
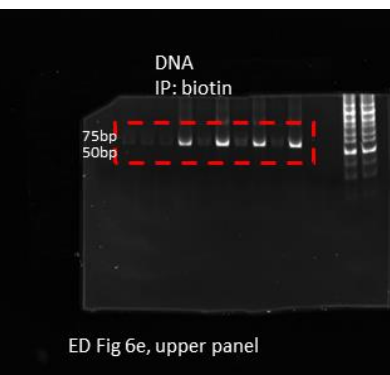
ED Fig 6c, bottom panel

Used in ED Figure 6c

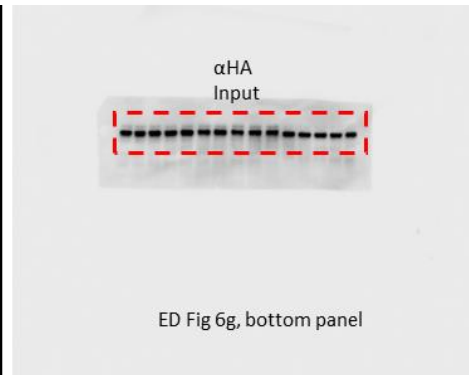
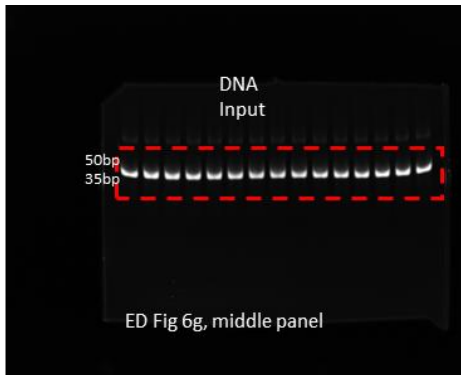
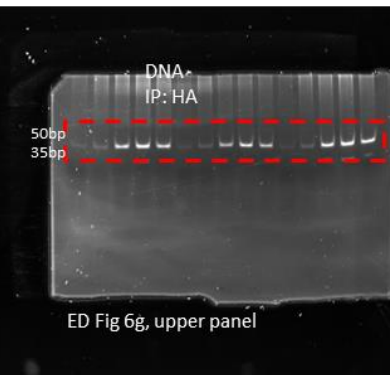
For ED Figure 6



Used in ED Figure 6d



Used in ED Figure 6e



Used in ED Figure 6g

Supplementary Tables

Supplementary Table 1. Summary of FoxP3 binding motifs. 1a, FoxP3 binding motif *in vitro*. 1b, FoxP3 binding motifs *in vivo*. 1c, other FKH TFs' binding motifs.

Supplementary Table 2. List of DNA oligos used in this study. 2a, allelic bias sites information. 2b, DNA oligo sequences.

Supplementary Table 3. Chromatin contacts at FoxP3-bound anchors. 3a, summary of the contacts with frequency >5 in WT Treg HiC and connected by two TnG anchors. 3b-3f, with an increasing FoxP3 PLAC-seq count threshold (>5, 10, 25, 50, 75 respectively), all the anchor information is displayed. 3g, genomic annotation for the CNR peaks overlapping with PLAC-seq counts above the threshold of 75.