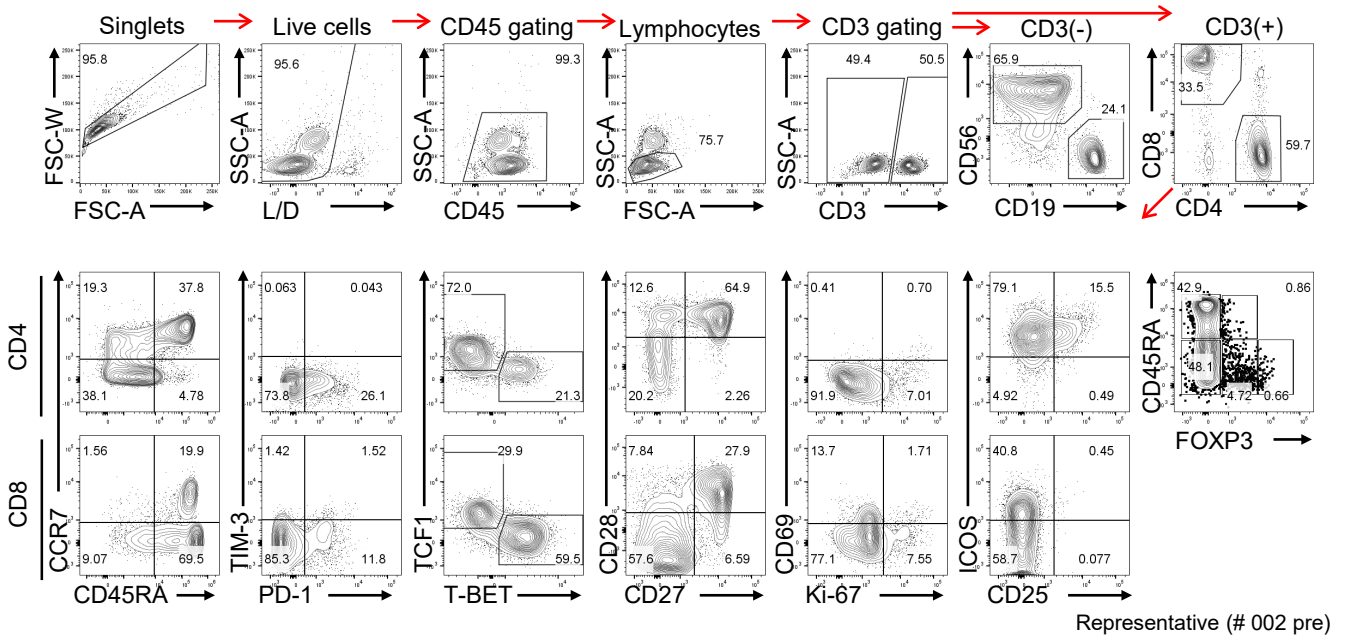


Supplementary Figure S3



Supplementary Figure S3: Gating strategy for immune phenotyping analysis. This gating is related with the immune analysis at the baseline (Figure 3C and 3D) and pre- and post-nivolumab treatment (Supplementary Figure 6). tSNE plots shown in the Figure 3 and Supplementary Figure 4 were generated from the CD3⁺ lymphocytes with this gating strategy.