

## Supplemental Online Content

Mukhopadhyay A, Blecker S, Li X, et al. Neighborhood-level socioeconomic status and prescription fill patterns among patients with heart failure. *JAMA Netw Open*. 2023;6(12):e2347519. doi:10.1001/jamanetworkopen.2023.47519

**eMethods.** Detailed Methods.

**eFigure.** Stratified Analysis

This supplemental material has been provided by the authors to give readers additional information about their work.

**eMethods. Detailed Methods.**

**ICD-10 diagnoses codes:** The following diagnoses codes were used for inclusion into the study, selected using methodology from Center for Medicare & Medicaid Services.<sup>59</sup> For inclusion, diagnoses were listed in the problem list, visit diagnosis, or billing code.

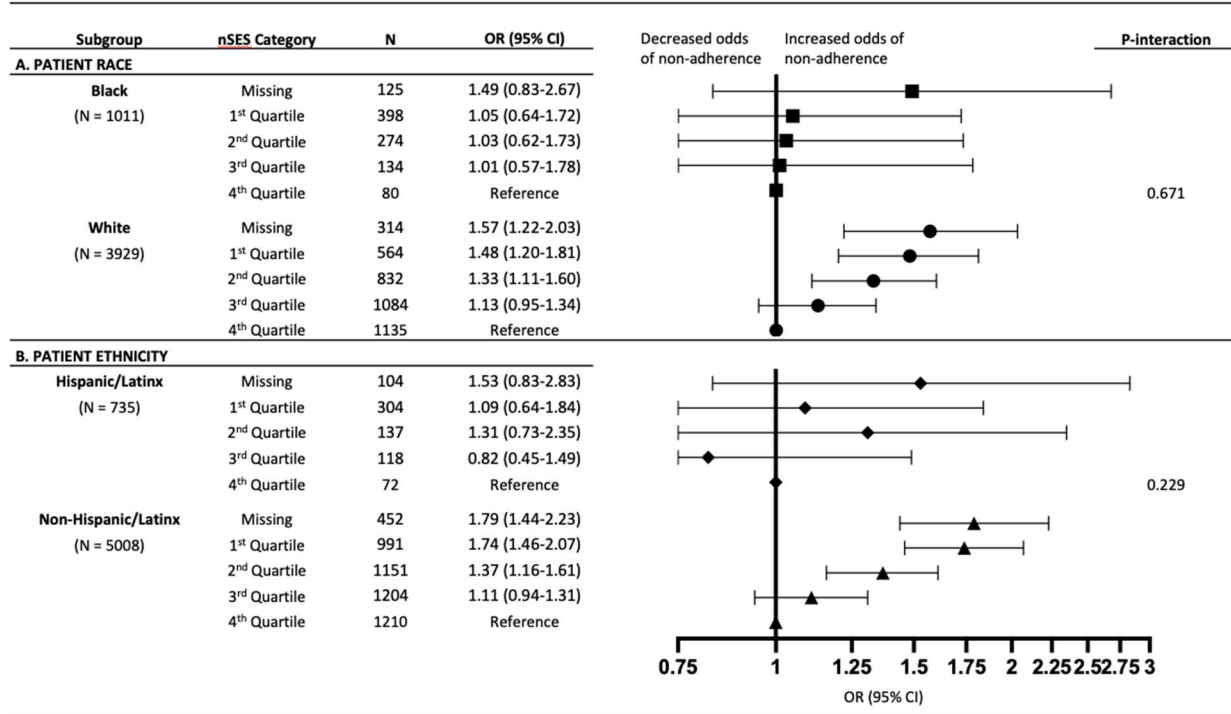
1. I50.x Heart Failure
2. I11.0 Hypertensive heart disease with heart failure
3. I13.0 Hypertensive heart and chronic kidney disease with heart failure and stage 1 through stage 4 chronic kidney disease, or unspecified chronic kidney disease
4. I13.2 Hypertensive heart and chronic kidney disease with heart failure and with stage 5 chronic kidney disease, or end stage renal disease

**Full list of medications included as GDMT:** The following medications were considered acceptable for each medication class (note, long-acting, short-acting, brand-name, and combination-pill formulations were all included).

1. BB – bisoprolol, carvedilol, metoprolol (succinate or tartrate)
2. ACEI – benazepril, captopril, enalapril, enalaprilat, fosinopril, lisinopril, moexipril, perindopril, quinapril, ramipril, trandolapril
3. ARB – azilsartan, candesartan, eprosartan, irbesartan, losartan, olmesartan, telmisartan, valsartan
4. ARNI – sacubritil/valsartan
5. MRA – epleronone, spironolactone
6. SGLT2i – empagliflozin, dapagliflozin

**eFigure 1. Stratified Analysis**

Association between nSES and medication non-adherence (PDC < 0.8) to GDMT, stratified by (A) race and (B) ethnicity.



Each analysis is adjusted for age, sex, ejection fraction, emergency department visit in past year, hospitalization in past year, and Elixhauser comorbidity index. nSES – neighborhood level socioeconomic status; GDMT – Guideline-directed medical therapy; PDC – proportion of days covered; OR – Odds ratio; CI – Confidence interval