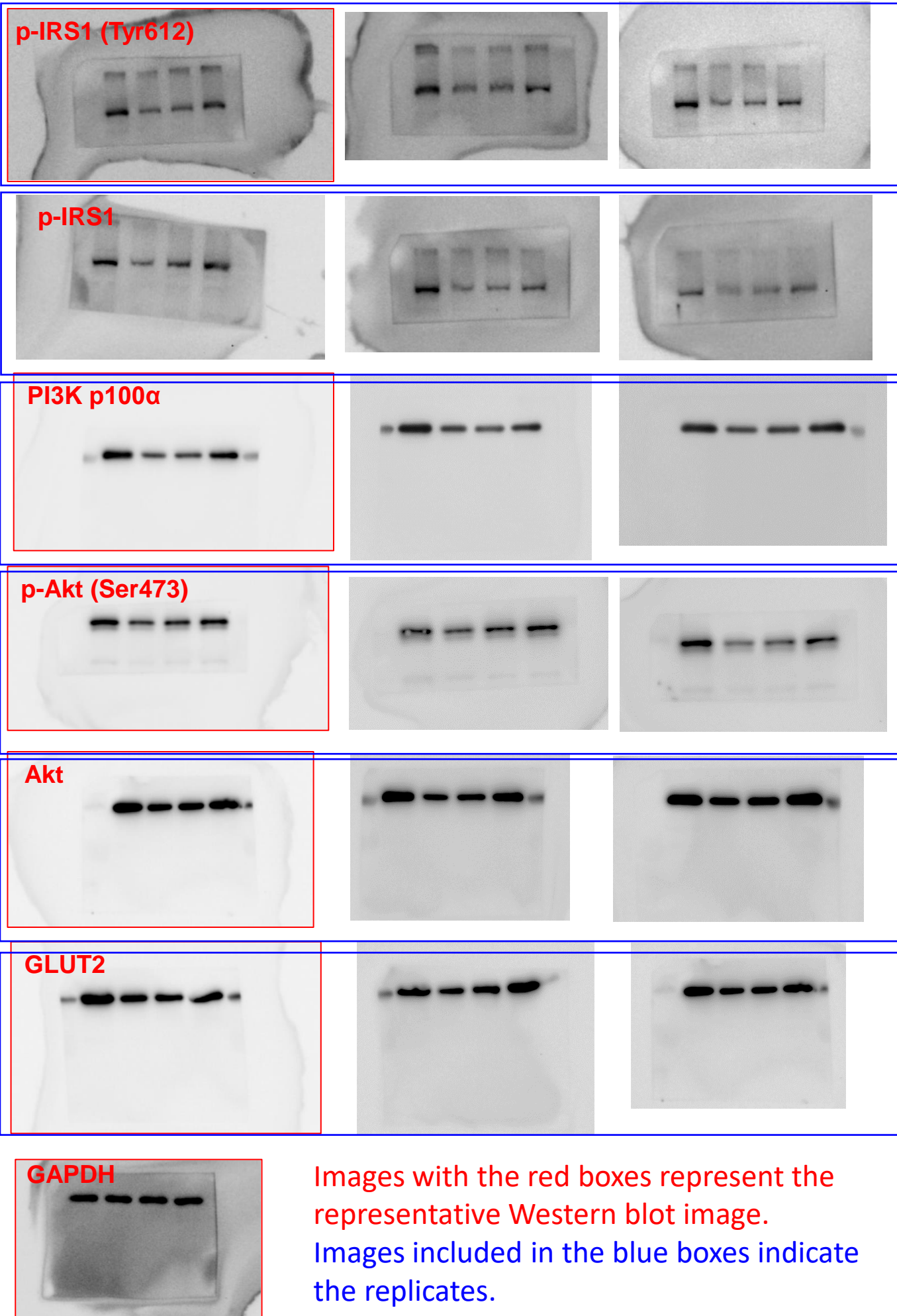


**Artichoke (*Cynara scolymus L.*) water extract alleviates palmitate-induced insulin resistance in HepG2 hepatocytes via the activation of IRS1/PI3K/AKT/FoxO1 and GSK-3 $\beta$  signaling pathway**

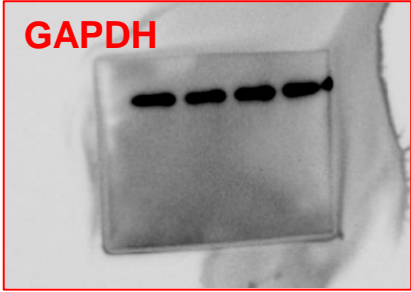
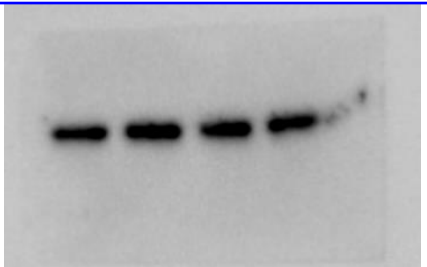
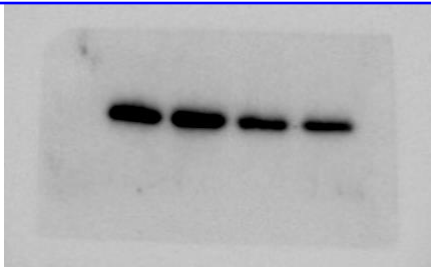
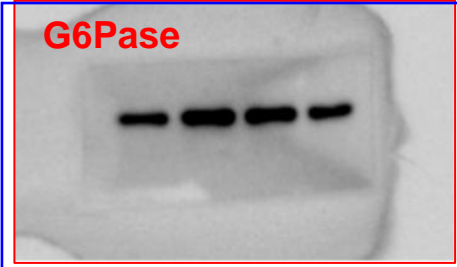
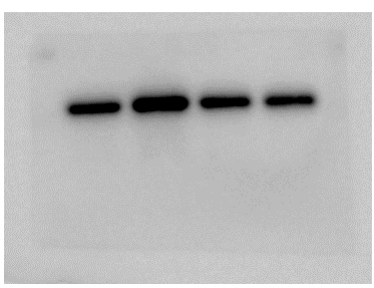
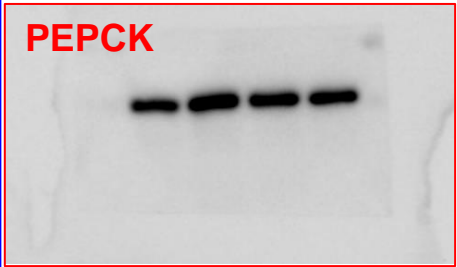
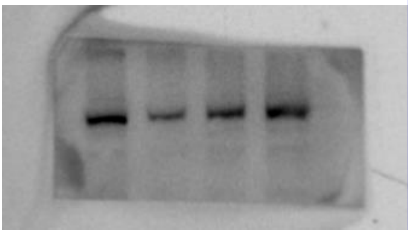
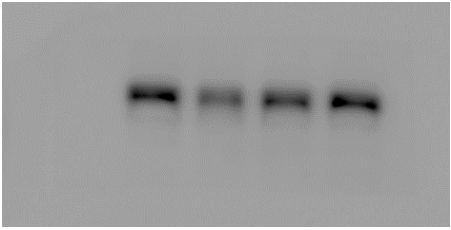
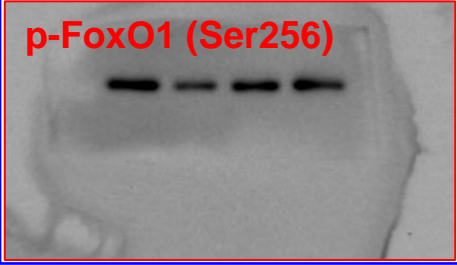
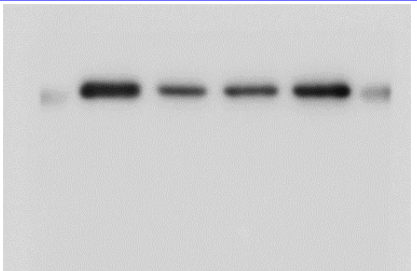
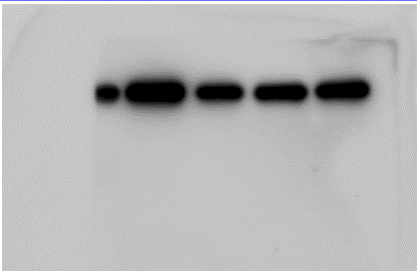
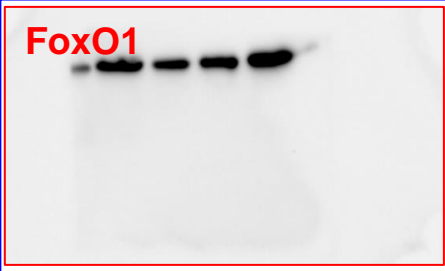
Aihua Deng<sup>1</sup>, Yun Wang<sup>1</sup>, Kerui Huang<sup>1</sup>, Peng Xie<sup>1</sup>, Ping Mo<sup>1</sup>, Fengying Liu<sup>1</sup>, Jun Chen<sup>2</sup>, Kaiyi Chen<sup>2</sup>, Yun Wang<sup>3\*</sup>, Bing Xiao<sup>4\*</sup>

**Figure 3A**

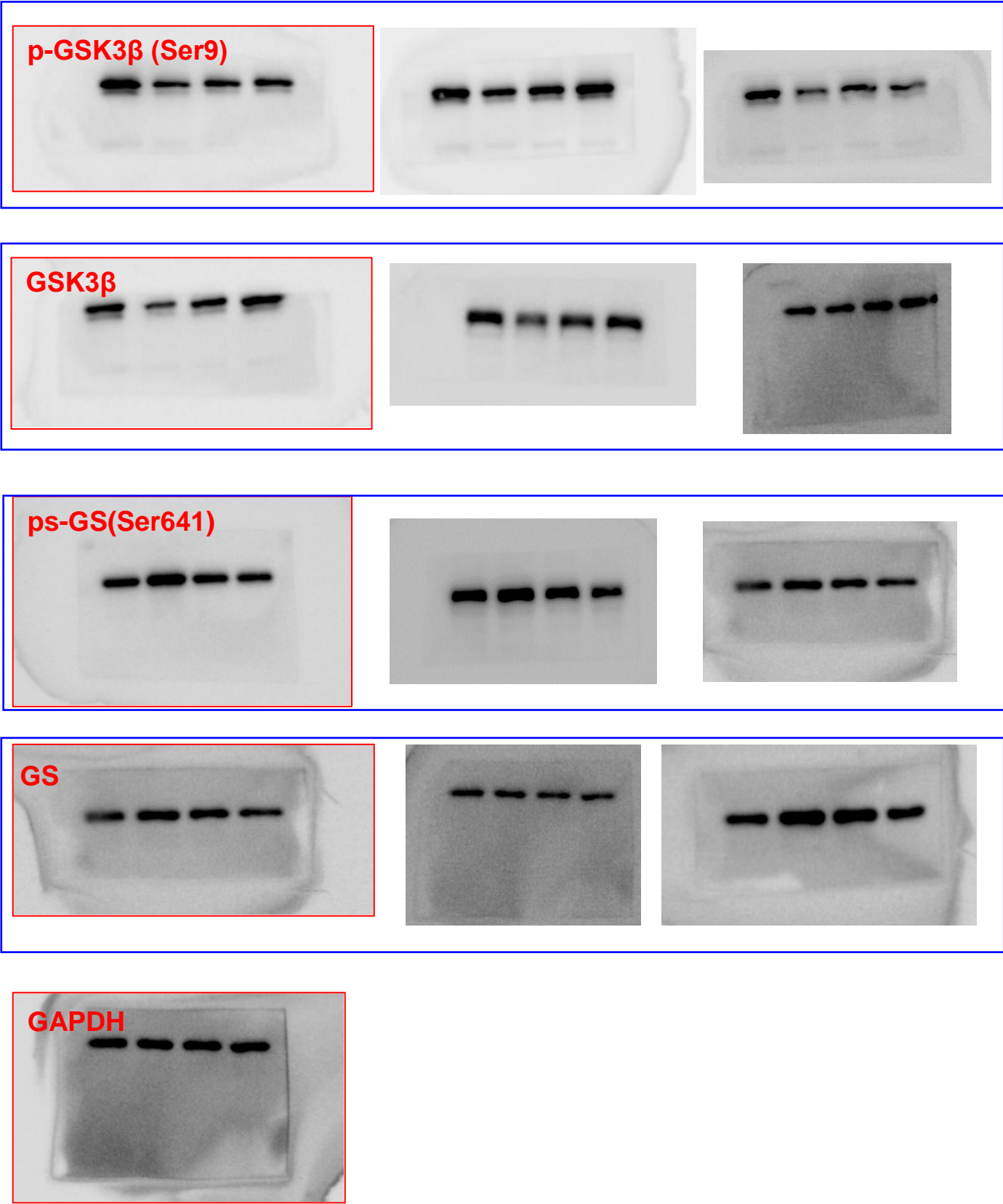


Images with the red boxes represent the representative Western blot image. Images included in the blue boxes indicate the replicates.

**Figure 4A**



**Figure 5A**



**Figure 6A**

