

# Supplemental Material

**Table S1. ICD-9 CODES.**

| CODES   |
|---|
| 070. Viral hepatitis  |
| 155. Malignant neoplasm of liver and intrahepatic bile ducts              |
| 570 Acute and subacute necrosis of liver                                  |
| 571.4 Chronic hepatitis   |
| <u>571.5</u> Cirrhosis of liver without mention of alcohol                |
| <u>571.8</u> Other chronic nonalcoholic liver disease                     |
| <u>571.9</u> Unspecified chronic liver disease without mention of alcohol |
| 572.2 Hepatic encephalopathy  |
| 572.3 Portal hypertension   |
| 572.4 Hepatorenal syndrome  |
| 572.8 Other sequelae of chronic liver disease                             |
| 573 Other disorders of liver  |
| 789.5 Ascites   |
| 789.1 Hepatomegaly  |
| 789.2 Splenomegaly  |
| 782.4 Jaundice, unspecified, not of newborn                               |

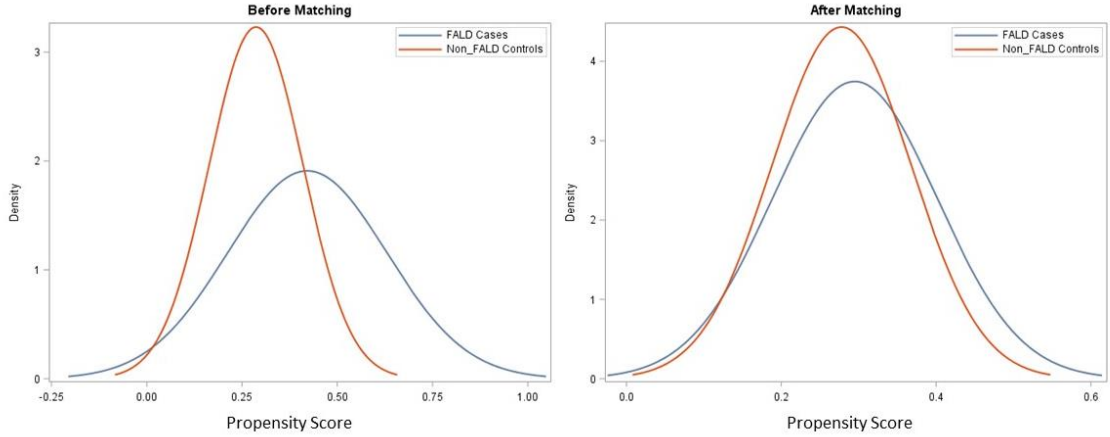
**Table S2. ICD-10 CODES.**

| CODES  |
|--|
| B15 Acute hepatitis A  |
| B16 Acute hepatitis B  |
| B17 Other acute viral hepatitis                                |
| B18 Chronic viral hepatitis                                    |
| B19 Unspecified viral hepatitis                                |
| K71 Toxic liver disease  |
| K72 Hepatic failure, not elsewhere classified                  |
| K73 Chronic hepatitis, not elsewhere classified                |
| K74.0 Hepatic fibrosis   |
| K74.1 Hepatic sclerosis  |
| K74.2 Hepatic fibrosis with hepatic sclerosis                  |
| K74.6 Other and unspecified cirrhosis of liver                 |
| K75.2 Nonspecific reactive hepatitis                           |
| K75.3 Granulomatous hepatitis, not elsewhere classified        |
| K75.8 Other specified inflammatory liver diseases              |
| K75.9 Inflammatory liver disease, unspecified                  |
| K76 Other diseases of liver                                    |
| K77 Liver disorders in diseases classified elsewhere           |
| C22 Malignant neoplasm of liver and intrahepatic bile ducts    |
| <b>R16 Hepatomegaly, not elsewhere classified</b>              |
| R16.0 Splenomegaly, not elsewhere classified                   |
| R16.1 Splenomegaly, not elsewhere classified                   |
| R16.2 Hepatomegaly with splenomegaly, not elsewhere classified |
| R17 Unspecified jaundice                                       |
| R18 Ascites  |

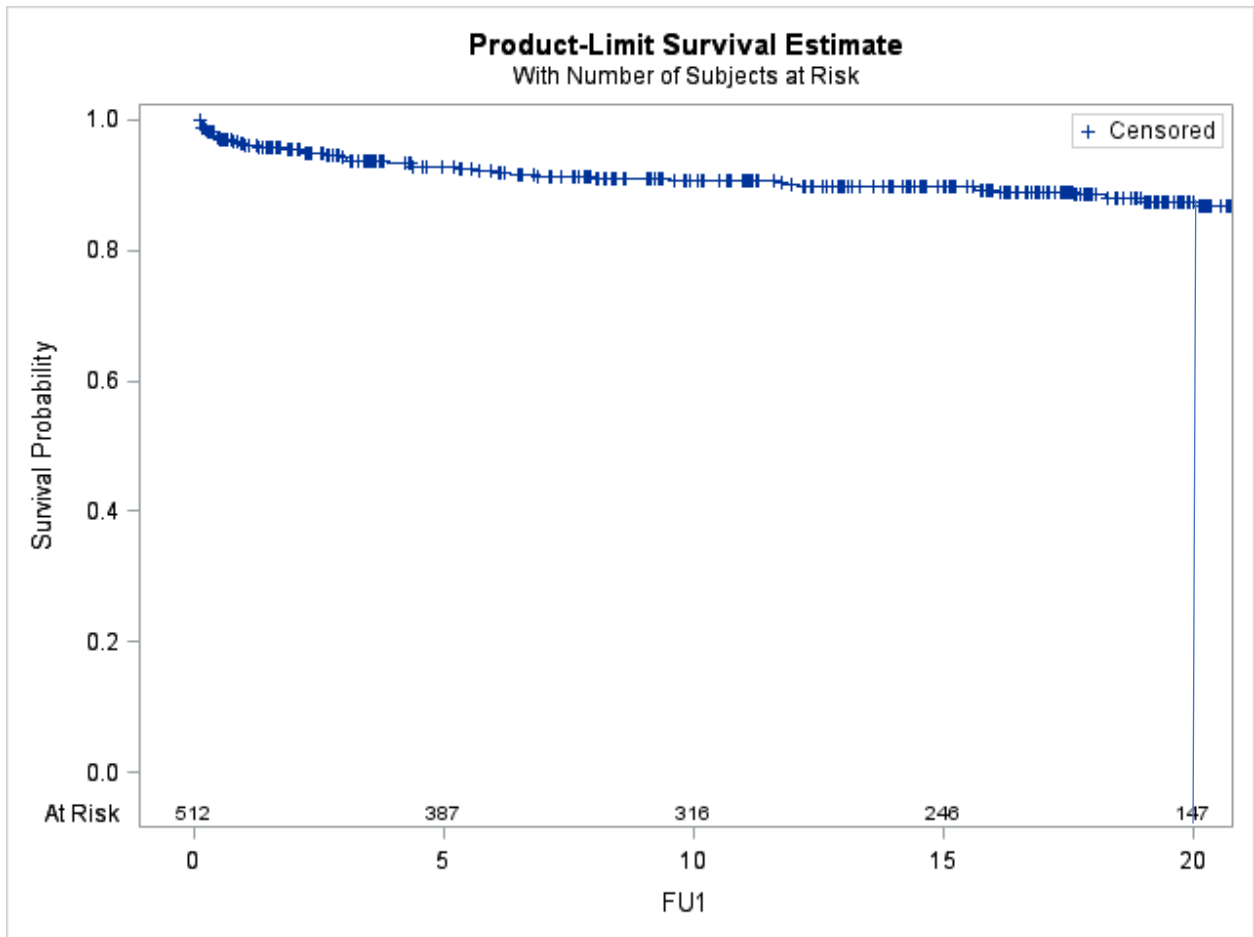
**Table S3. List ICD-9/10 codes of the comorbidities used in the propensity score.**

| <b>Comorbidity</b>           | <b>ICD-9/10 codes</b>                    |
|------------------------------|--|
| Atrial fibrillation          | 423.7, I48.9                             |
| Congestive heart failure     | 428, I50                                 |
| Heart block                  | 426.0, 426.6, I44.2, I45.5               |
| Pulmonary hypertension       | 416.0, 416.8, 416.9, I27.0, I27.2, I27.8 |
| Arterial hypertension        | 401, I10, I11, I12, I13, I14, I15, I16   |
| Acute renal failure          | 584, N17                                 |
| Supraventricular tachycardia | 427.0, I47.1                             |
| Protein-losing enteropathy   | 579.8, K52.22                            |

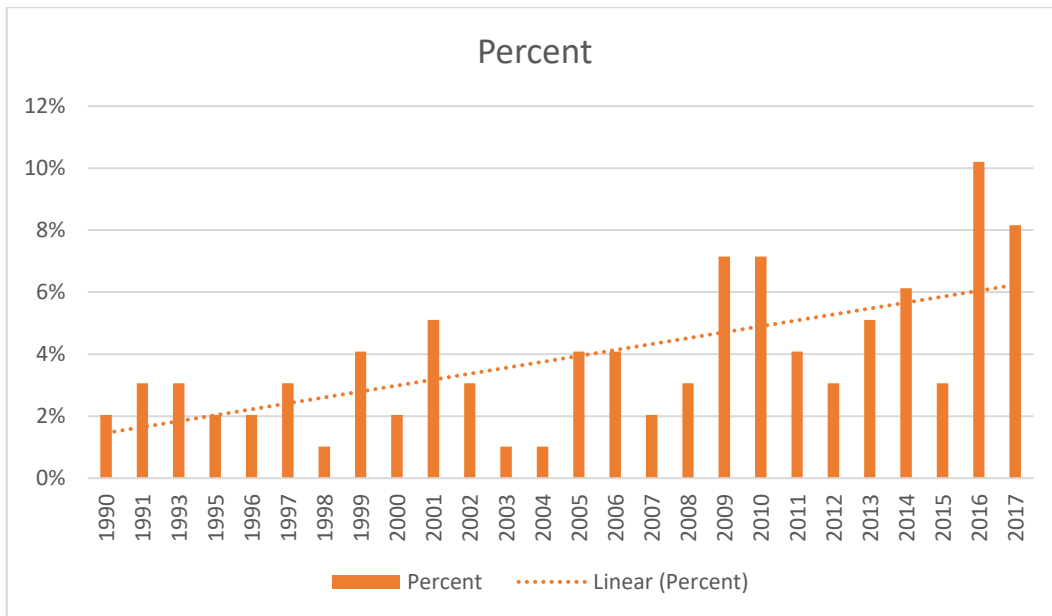
**Figure S1. Distribution of propensity score calculated with selected demographic information and comorbidities before (left panel) and after (right panel) matching.**



**Figure S2. Kaplan-Meier curve showing the cumulative incidence of mortality for the overall Fontan population (n=512).**



**Figure S3. Frequency of severe FALD hospitalization from 1990 to 2017.**



Dashed line shows the linear trend.