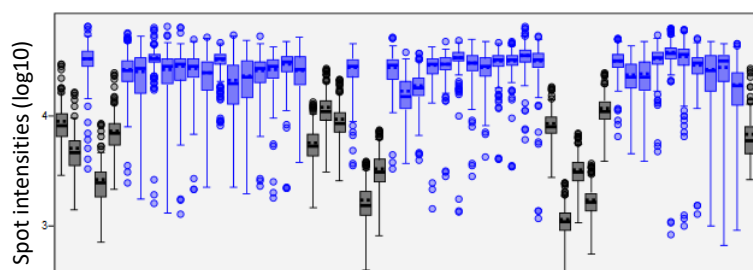
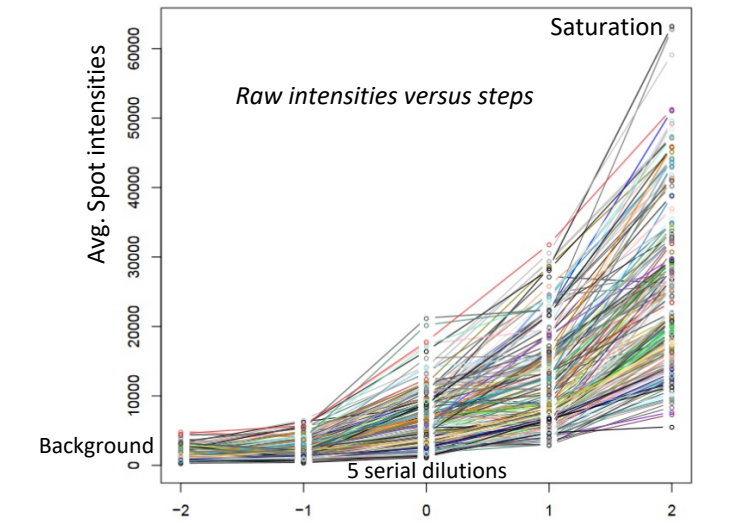
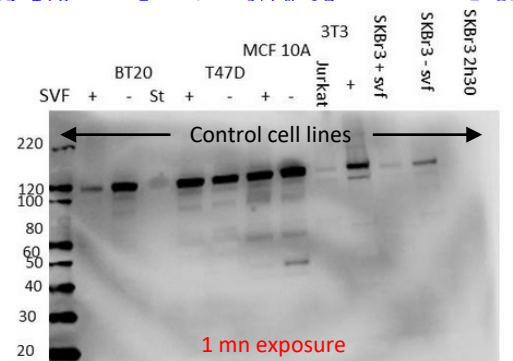


Raw data quality control

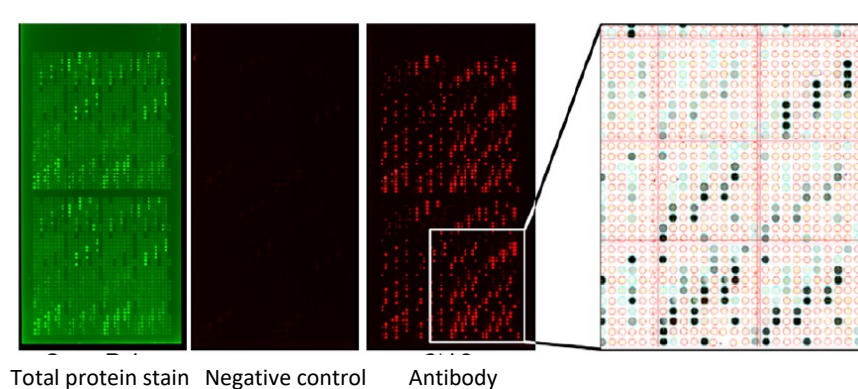


Control Rabbit [IR-40-800 #0005971]
 Control Rabbit [IR-20-800 #0005971]
 FAK [15a # IR-20-800 #0005971]
 Control Rabbit [IR-10-800 #0005971]
 Control Rabbit [IR-30-800 #0005971]
 AMPK [Wt # IR-20-800 #0005972]
 AMPK [K61 # IR-20-800 #0005972]
 Akt [Ser181] [754 # IR-20-800 #0005973]
 Akt [Ser181] [308 # IR-20-800 #0005974]
 Akt [Ser181] [138 # IR-20-800 #0005975]
 Akt [Ser181] [104b # IR-20-800 #0005976]
 Akt [Ser181] [104c # IR-20-800 #0005977]
 Akt [Ser181] [104d # IR-20-800 #0005978]
 Akt [Ser181] [104e # IR-20-800 #0005979]
 Akt [Ser181] [104f # IR-20-800 #0005980]
 Akt [Ser181] [104g # IR-20-800 #0005981]
 Akt [Ser181] [104h # IR-20-800 #0005982]
 Akt [Ser181] [104i # IR-20-800 #0005983]
 Akt [Ser181] [104j # IR-20-800 #0005984]
 Akt [Ser181] [104k # IR-20-800 #0005985]
 Akt [Ser181] [104l # IR-20-800 #0005986]
 Akt [Ser181] [104m # IR-20-800 #0005987]
 Akt [Ser181] [104n # IR-20-800 #0005988]
 Akt [Ser181] [104o # IR-20-800 #0005989]
 Akt [Ser181] [104p # IR-20-800 #0005990]
 Akt [Ser181] [104q # IR-20-800 #0005991]
 Akt [Ser181] [104r # IR-20-800 #0005992]
 Akt [Ser181] [104s # IR-20-800 #0005993]
 Akt [Ser181] [104t # IR-20-800 #0005994]
 Akt [Ser181] [104u # IR-20-800 #0005995]
 Akt [Ser181] [104v # IR-20-800 #0005996]
 Akt [Ser181] [104w # IR-20-800 #0005997]
 Akt [Ser181] [104x # IR-20-800 #0005998]
 Akt [Ser181] [104y # IR-20-800 #0005999]
 Akt [Ser181] [104z # IR-20-800 #0006000]
 Akt [Ser181] [104aa # IR-20-800 #0006001]
 Akt [Ser181] [104ab # IR-20-800 #0006002]
 Akt [Ser181] [104ac # IR-20-800 #0006003]
 Akt [Ser181] [104ad # IR-20-800 #0006004]
 Akt [Ser181] [104ae # IR-20-800 #0006005]
 Akt [Ser181] [104af # IR-20-800 #0006006]
 Akt [Ser181] [104ag # IR-20-800 #0006007]
 Akt [Ser181] [104ah # IR-20-800 #0006008]
 Akt [Ser181] [104ai # IR-20-800 #0006009]
 Akt [Ser181] [104aj # IR-20-800 #0006010]

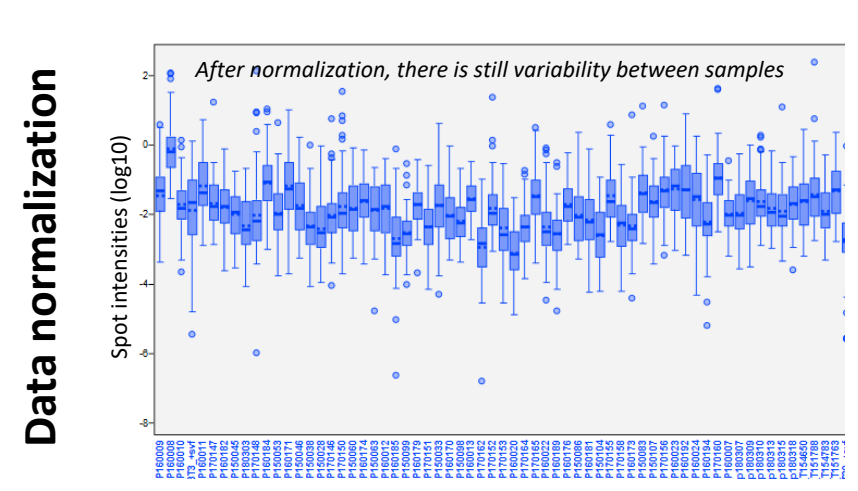
A



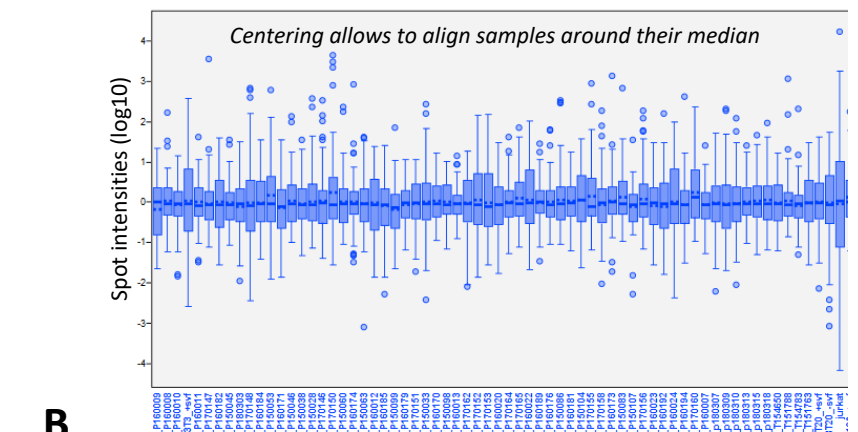
Data normalization



After normalization, there is still variability between samples

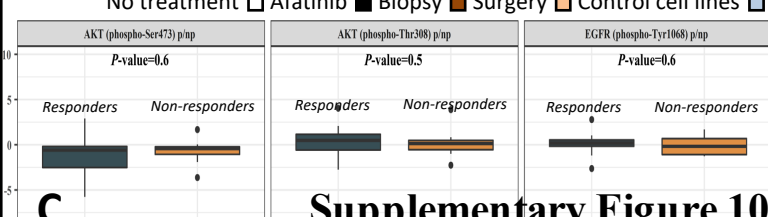
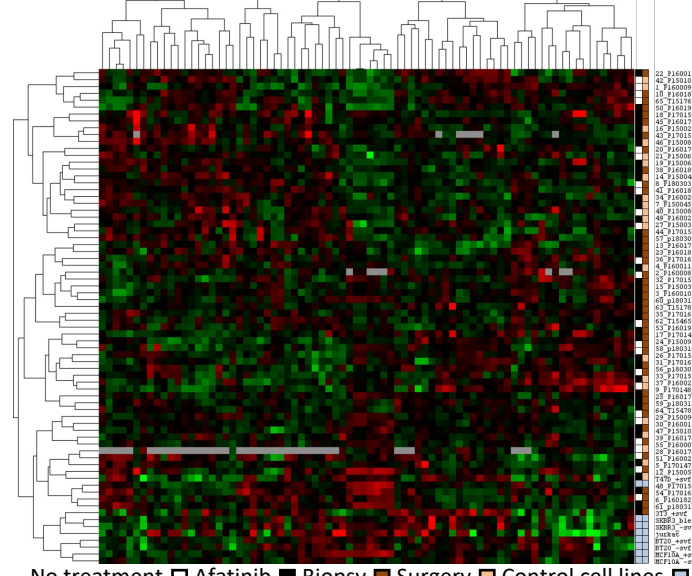
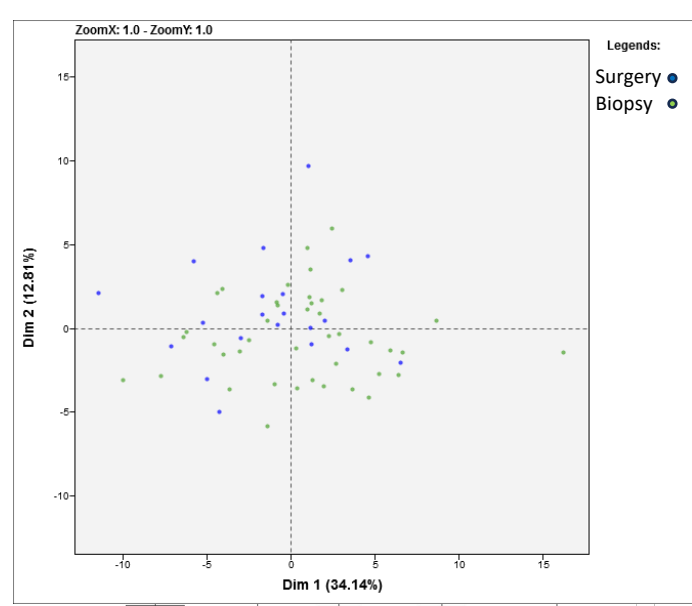


Centering allows to align samples around their median



B

Exploratory RPPA analyses



C

Supplementary Figure 10