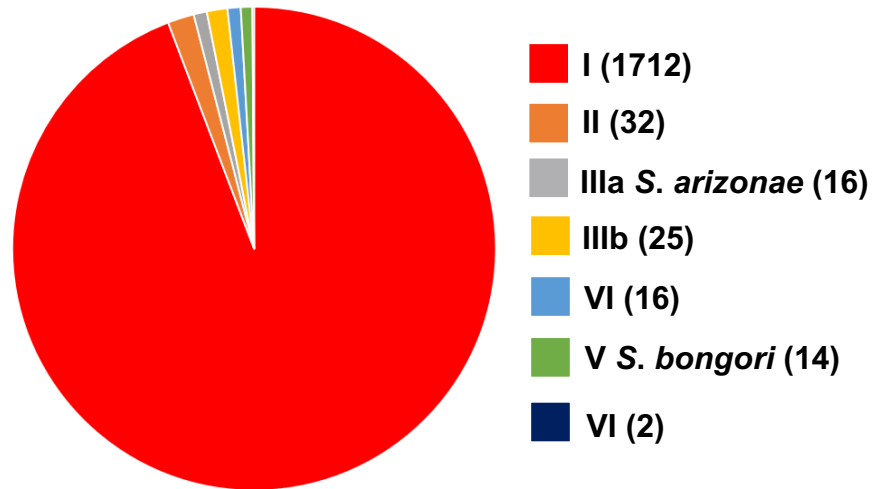
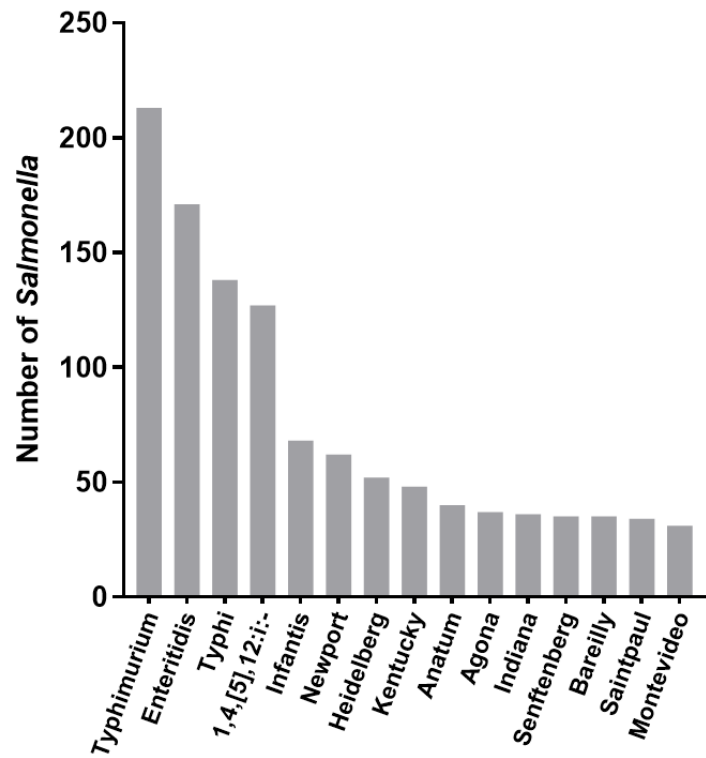
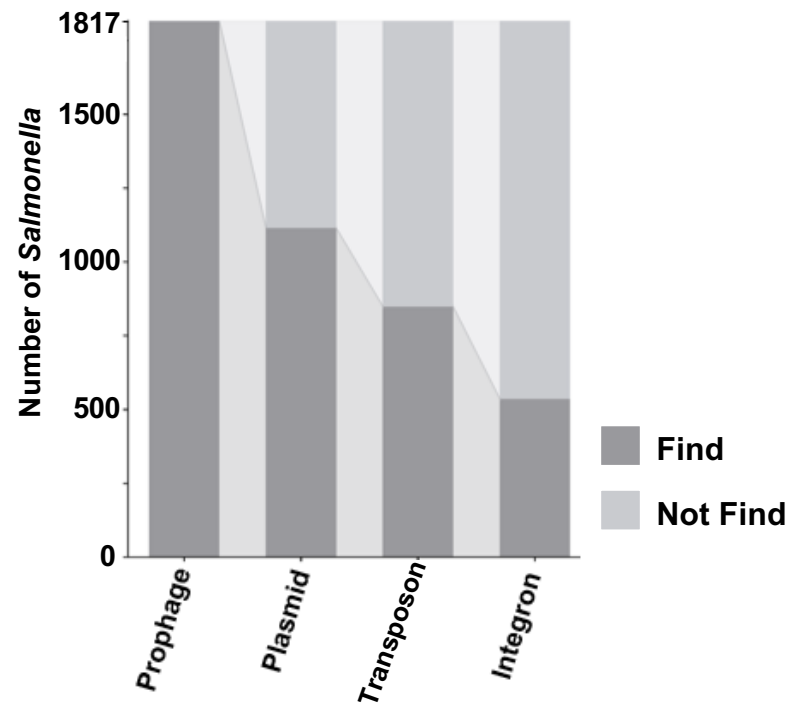
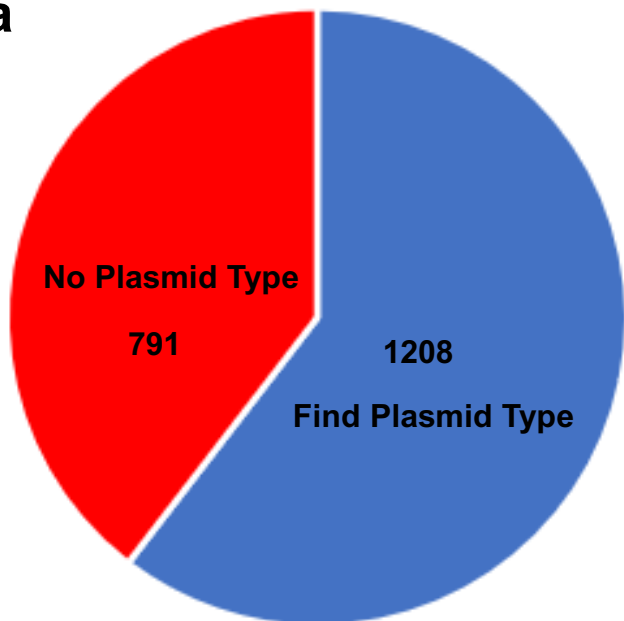
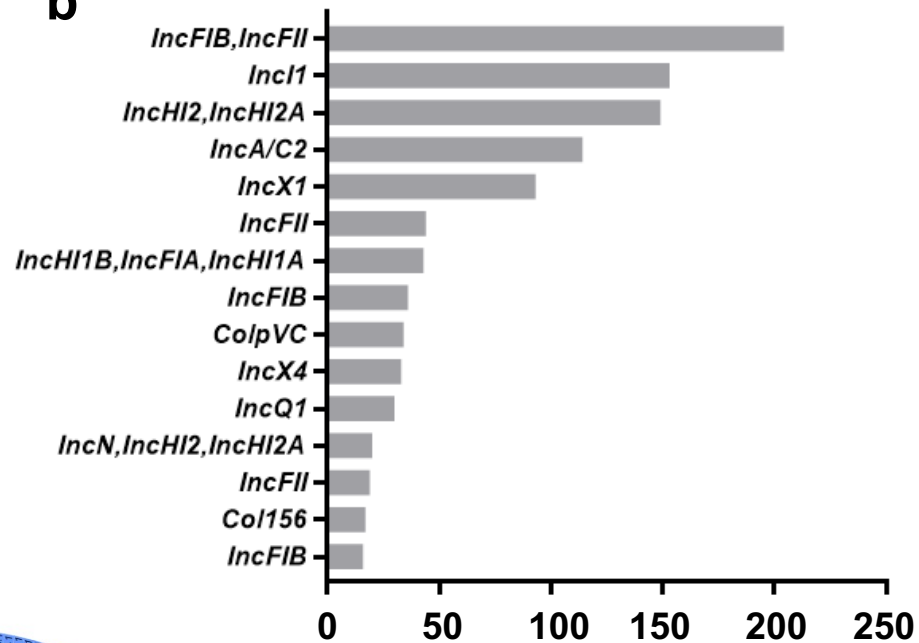
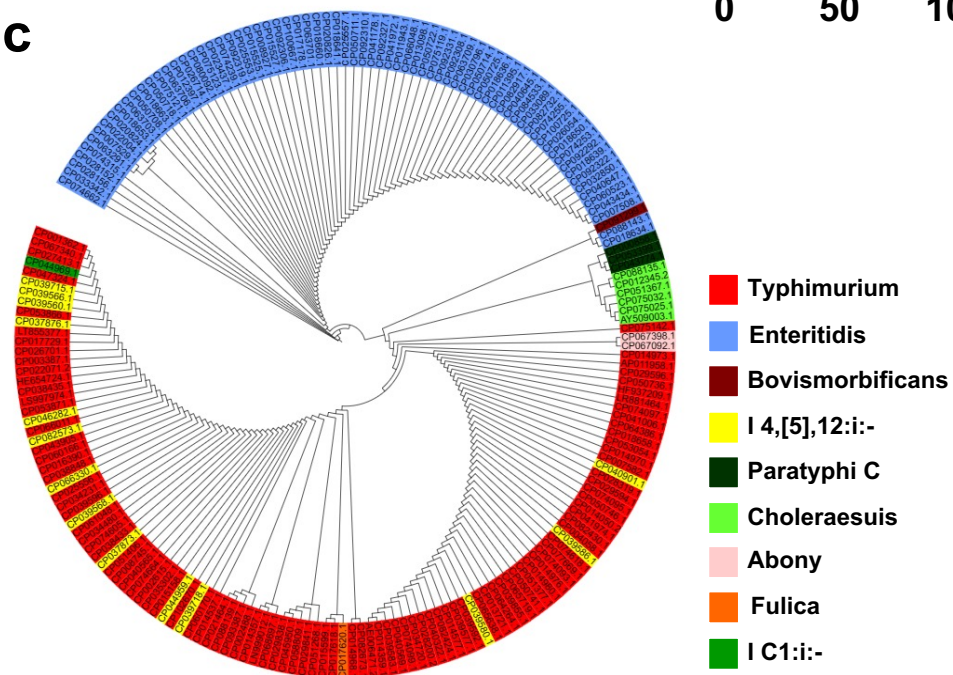
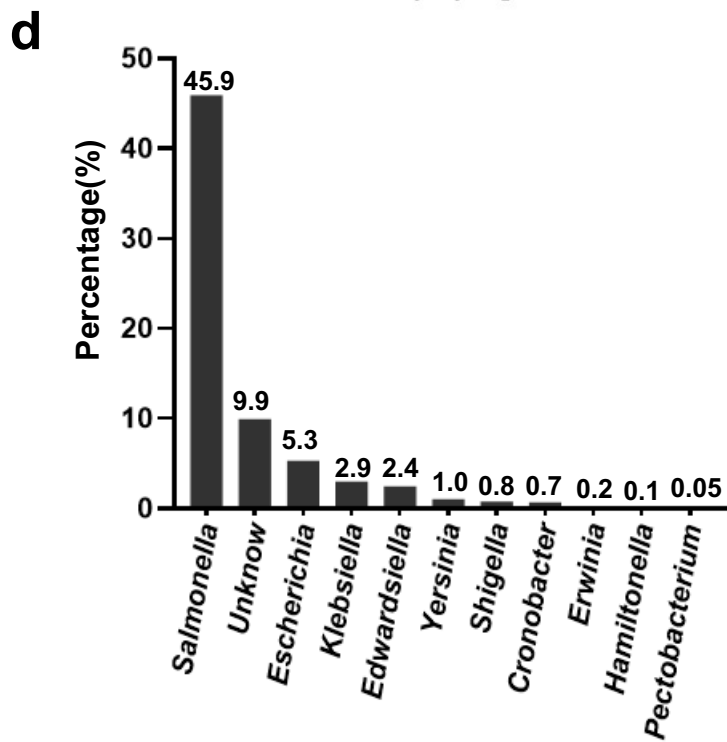
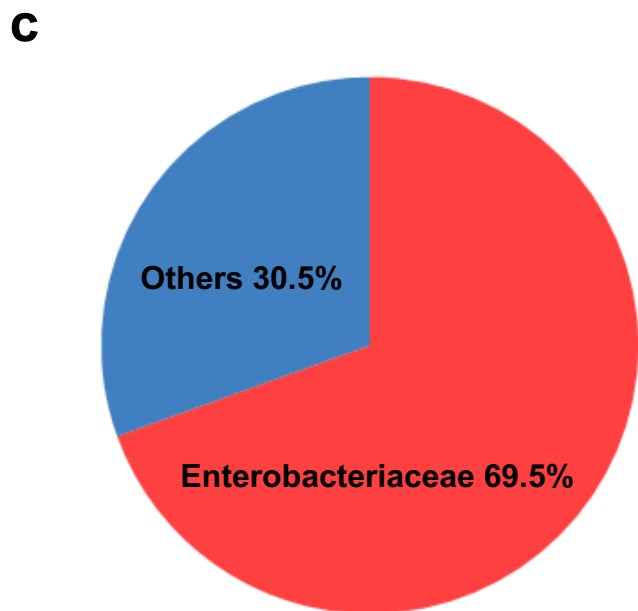
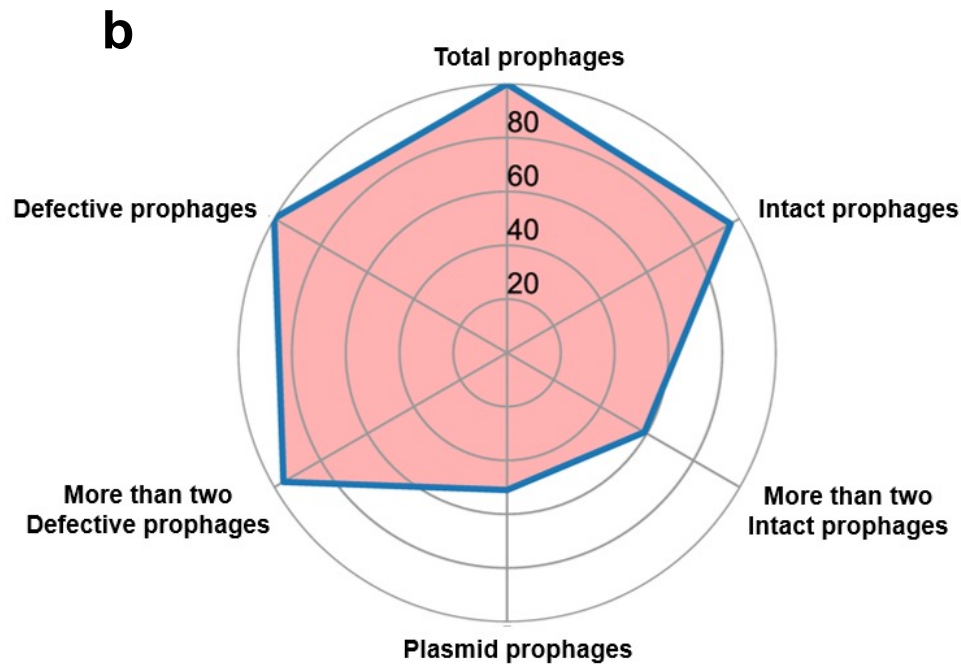
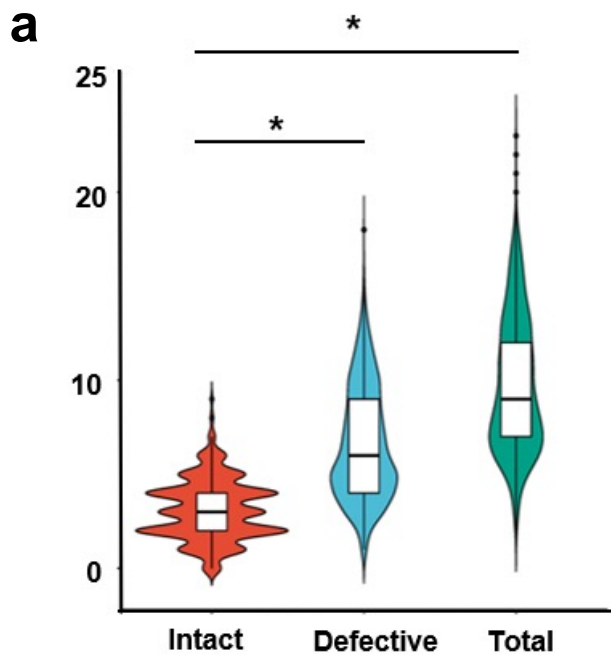
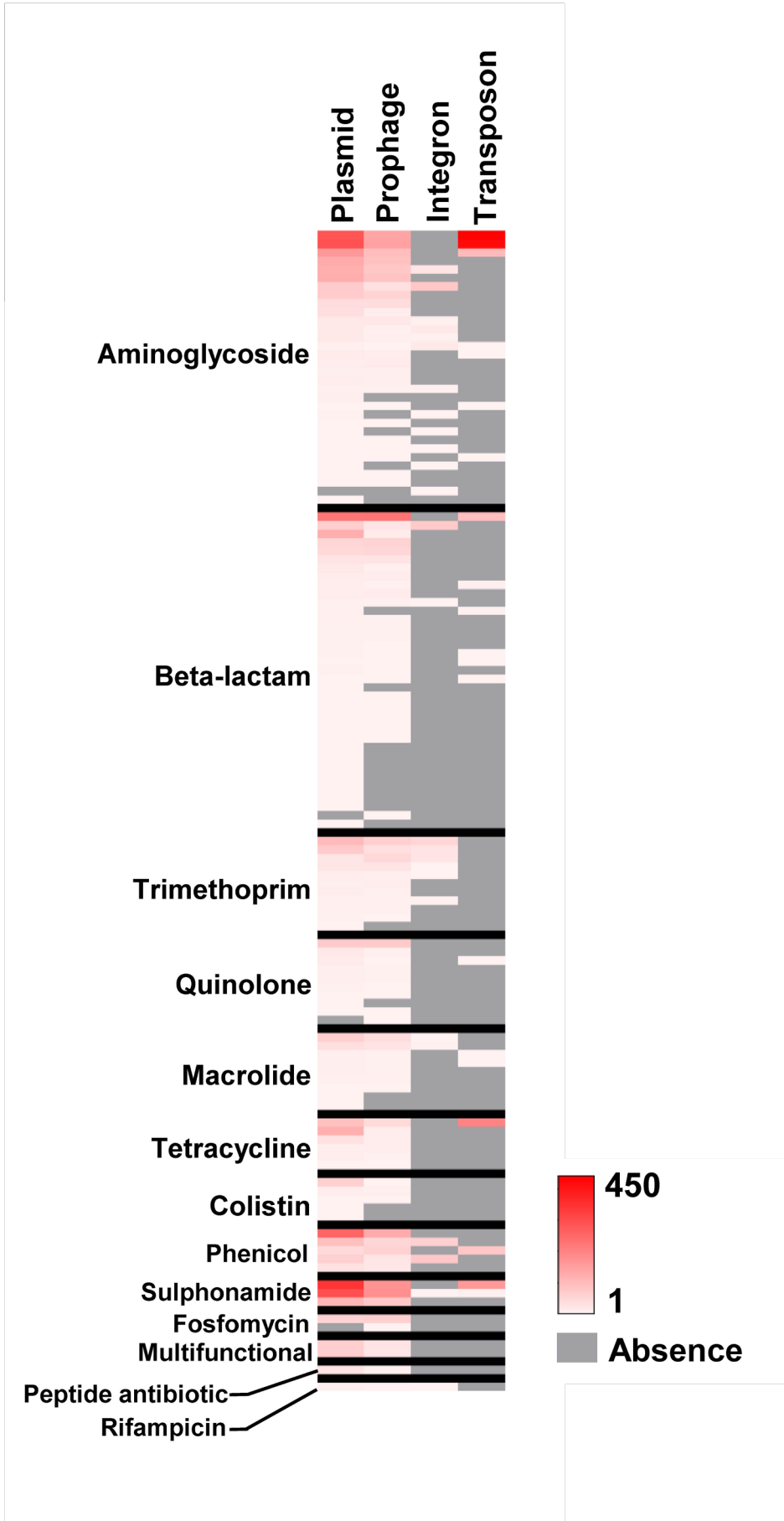


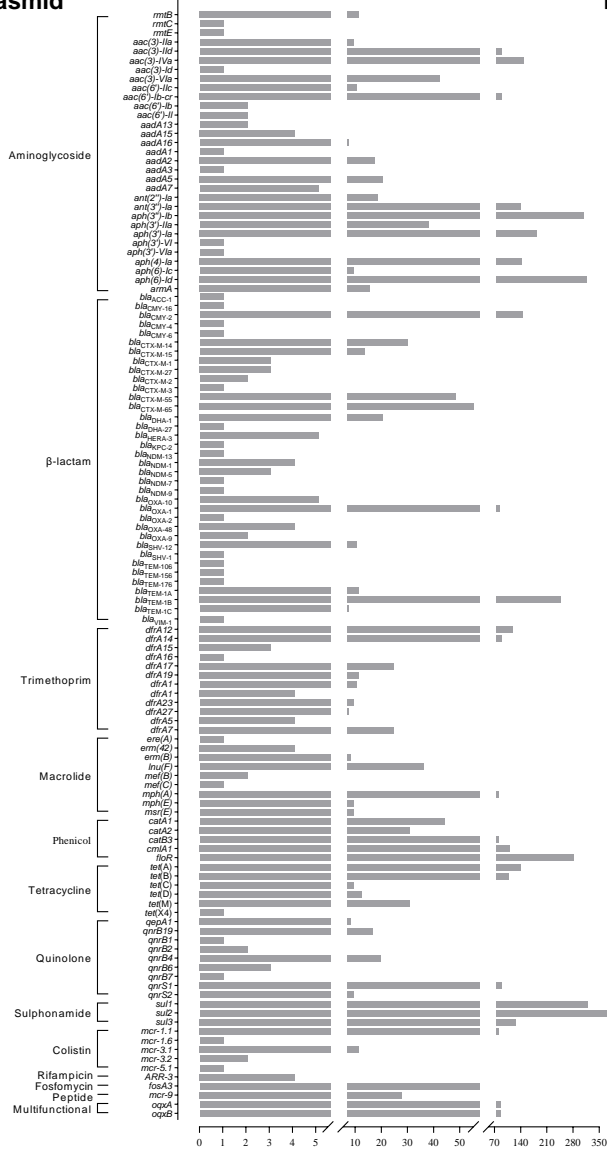
**a****b****c****d**

**a****b****c**

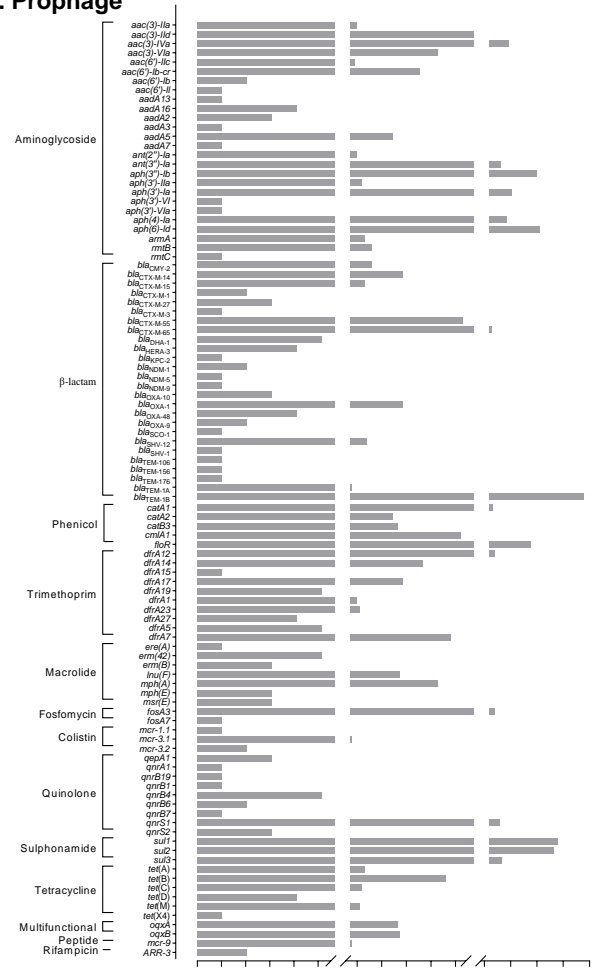




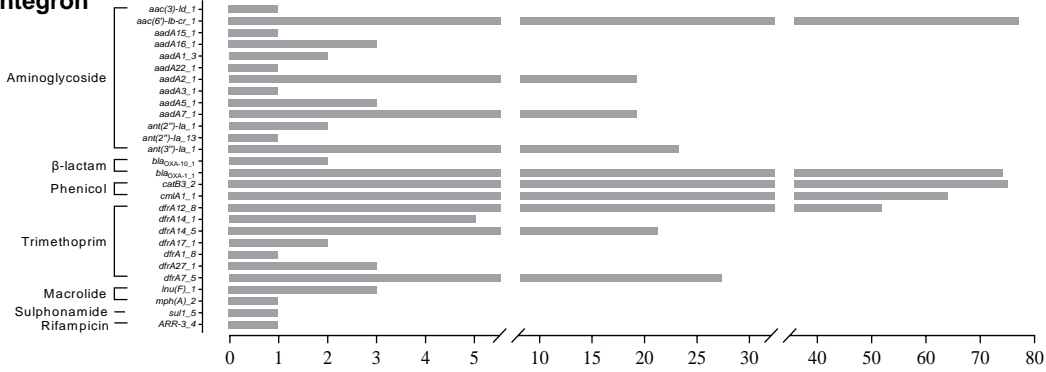
### a. Plasmid



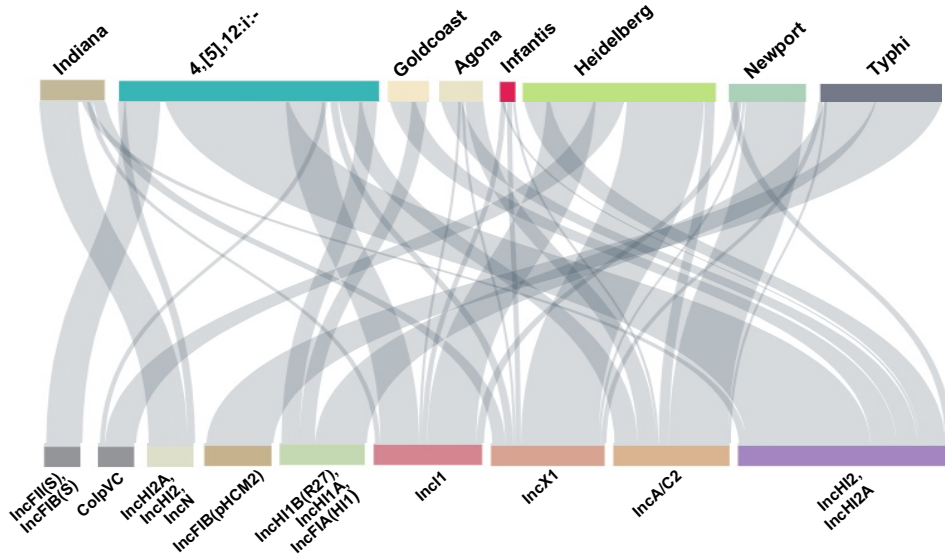
### b. Prophage



### c. Integron

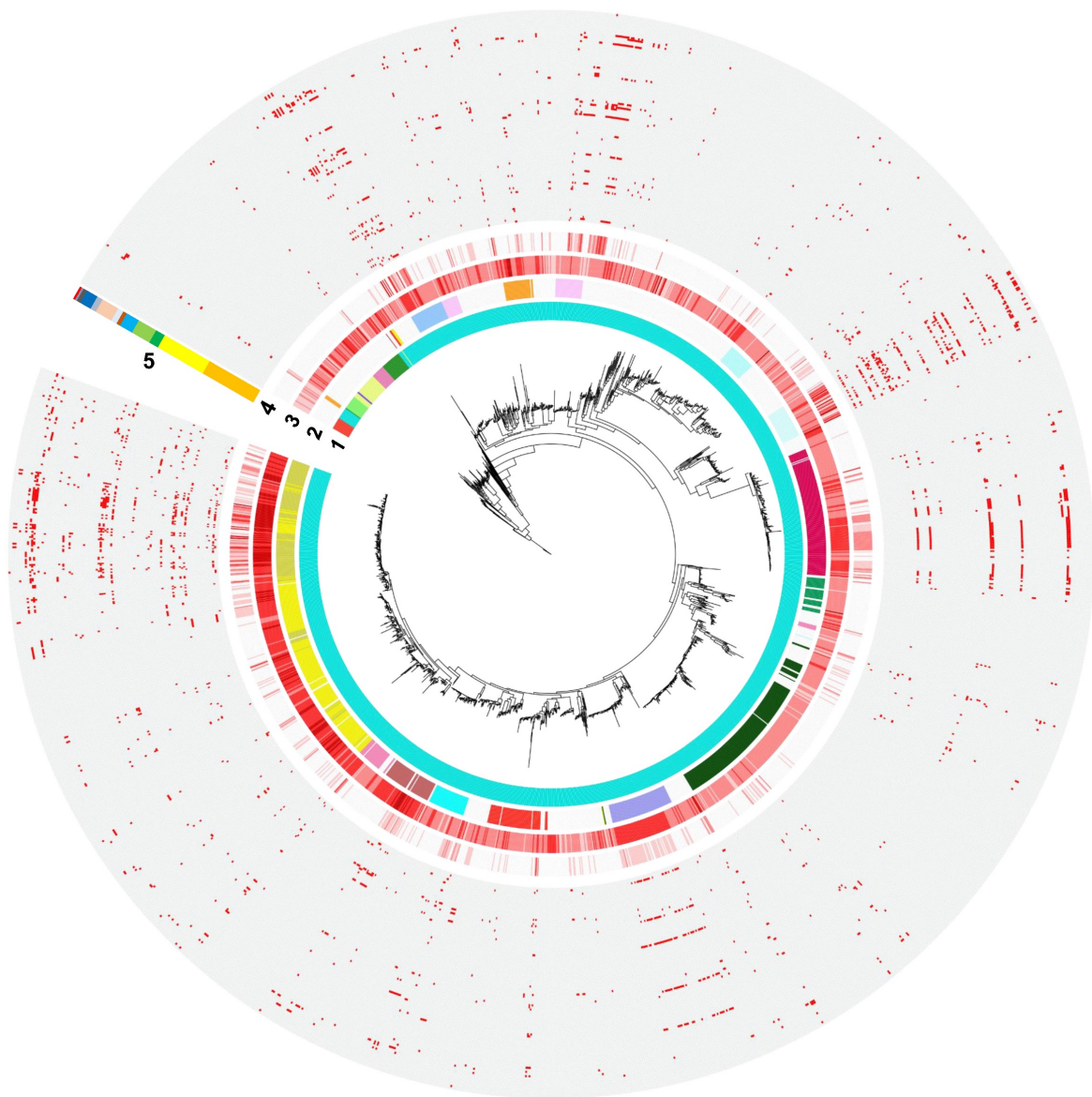


**a.**



**b.**

IncHI2, IncHI2A*	268	163	123	111	56	12	56	36	29	21	15	10	2
IncA/C2*	110	56	68	48	8	42		5	6	5			
IncX1*	9	3	6	3			2	3	1				
IncI1*	24	8	28	1	1			1					
IncHI1B(R27), IncHI1A, IncFIA(HI1)	41	54	27	33	27	34		1	7	2			
IncFIB(pHCM2)													
IncHI2A, IncHI2, IncN*	95	43	40	35	16		20	6	3	2	9		
ColpVC													
IncFII(S), IncFIB(S)					1	1							
	Aminoglycoside	Sulphonamide	Beta-lactam	Phenicol	Trimethoprim	Tetracycline	Multifunctional	Macrolide	Quinolone	Colistin	Fosfomycin	Peptide	Rifampicin



### 1. Subspecies

- I
- II
- IIIa *S. arizonae*
- IIIb
- VI
- V *S. bongori*
- VI

### 2. Top 15 serovar

- Typhimurium
- Enteritidis
- Typhi
- 1,4,[5],12:i:-
- Infantis
- Newport
- Heidelberg
- Kentucky
- Anatum
- Agona
- Indiana
- Bareilly
- Saintpaul
- Senftenberg
- Montevideo
- Others

### 3. Prophage number

- 1-5
- 6-10
- 11-15
- 16-20
- 21

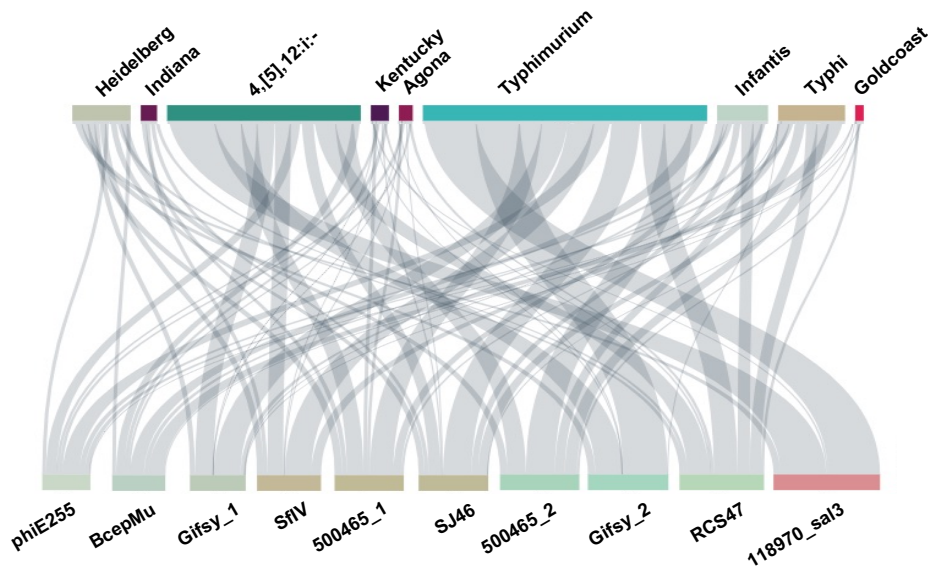
### 4. ARG Carried by Prophage number

- 0
- 1-5
- 6-10
- 11-15
- 16-20
- >20

### 5. ARG Type

- Aminoglycoside
- Beta-lactam
- Trimethoprim
- Phenicol
- Macrolide
- Colistin
- Quinolone
- Sulphonamide
- Tetracycline
- Fosfomycin
- Peptide Antibiotic
- Rifampicin
- Multifunctional

**a.**

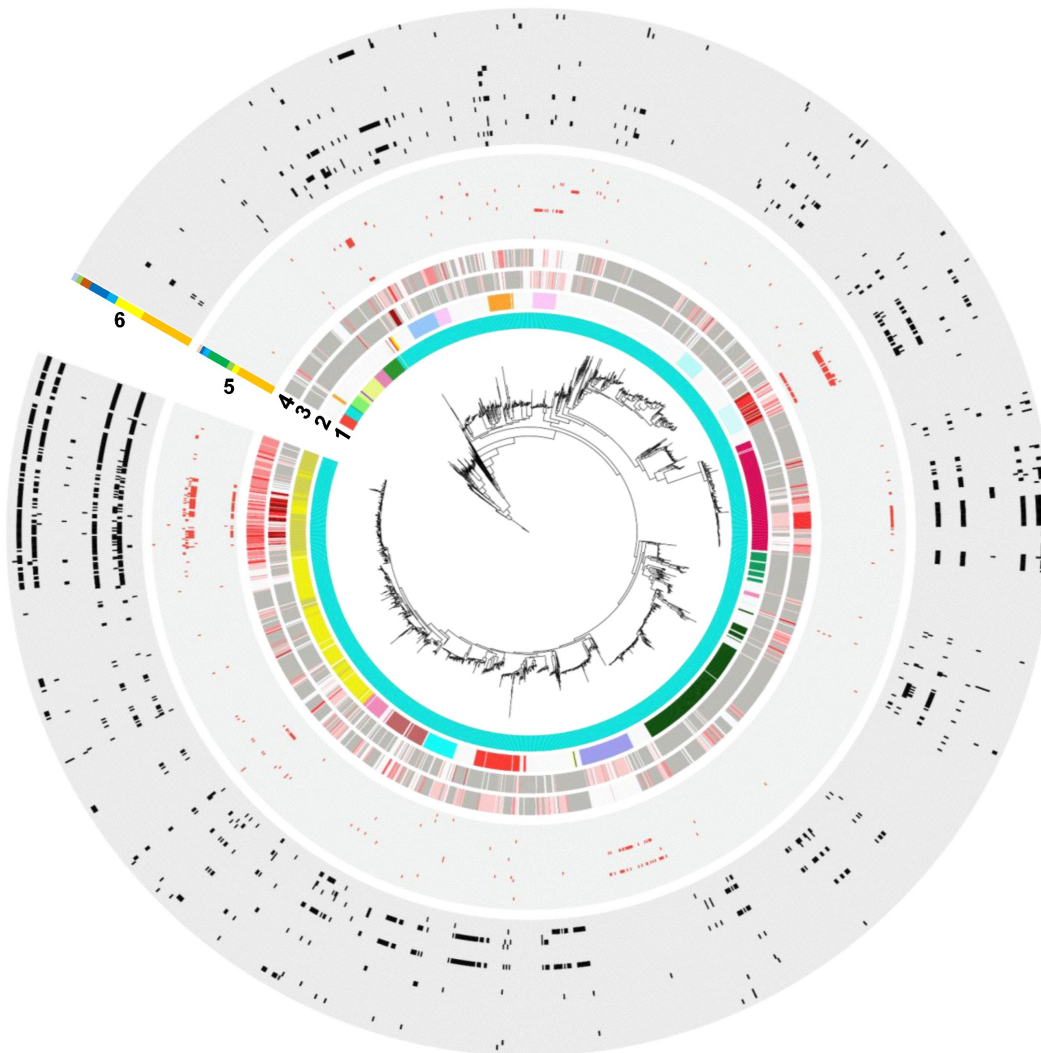


**b.**

118970_sal3		5		1		5						
RCS47	292	193	144	84	66	43	25	33	24	15	3	
Gifsy_2												
500465_1	10	8	5					5				
SJ46	173	120	75	62	32	15	32	5	15	20	4	2
500465_2												
SfIV												
Gifsy_1	2	1	1									
BcepMu												
phiE255												
	Aminoglycoside	Beta-lactam	Sulphonamide	Phenicol	Trimethoprim	Quinolone	Fosfomycin	Tetracycline	Macrolide	Multifunctional	Colistin	Rifampicin







**1. Subspecies**

- I
- II
- IIIa *S. arizonae*
- IIIb
- VI
- V *S. bongori*
- VI

**2. Top 15 serovar**

- Typhimurium
- Enteritidis
- Typhi
- 1,4,[5],12:i:-
- Infantis
- Newport
- Heidelberg
- Kentucky
- Anatum
- Agona
- Indiana
- Bareilly
- Saintpaul
- Senftenberg
- Montevideo
- Others

**3. ARG Number carried by Integron**

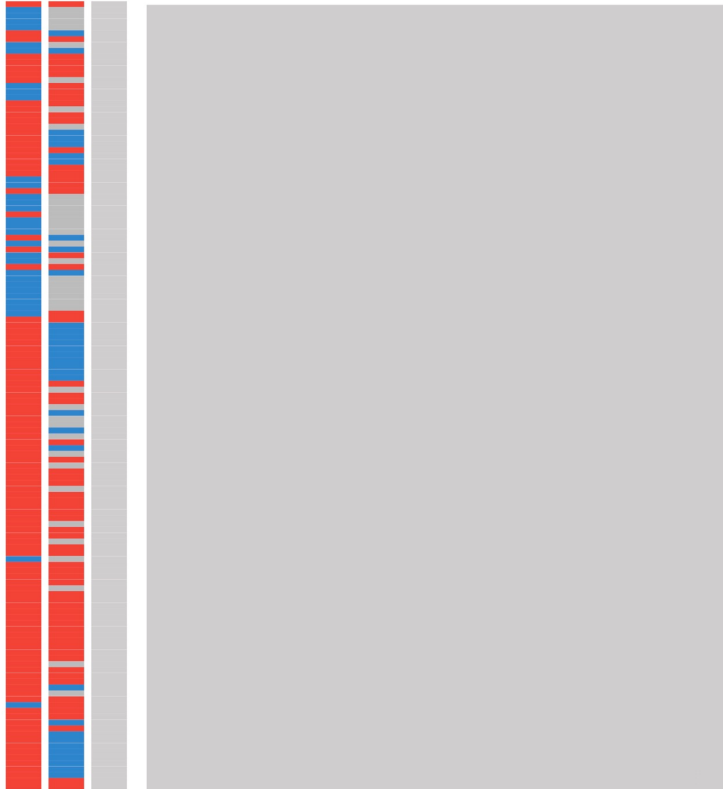

- No Integron
- 0
- 1
- 2
- 3
- 4

**4. ARG Number carried by Transposon**

- No Transposon
- 0
- 1-2
- 3-4
- 5-6
- 7-8

**5.(Integron)-6.(Transposon) ARG Type**

- Aminoglycoside
- Beta-lactam
- Phenicol
- Trimethoprim
- Macrolide
- Sulphonamide
- Rifampicin
- Tetracycline
- Quinolone

**a****Serovar****Source****In498****aadA2****blaCARB-2****floR\_2****sul1****tet(G)****b****Serovar**
 I 4,[5],12: i:-

 Typhimurium

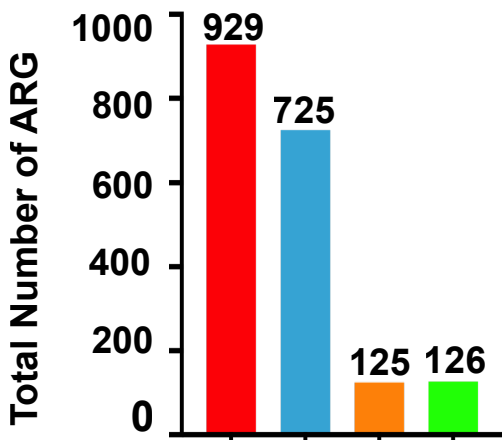
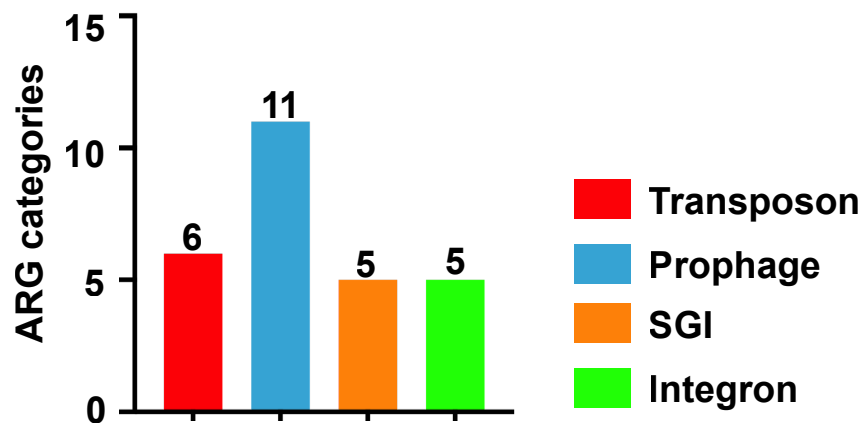
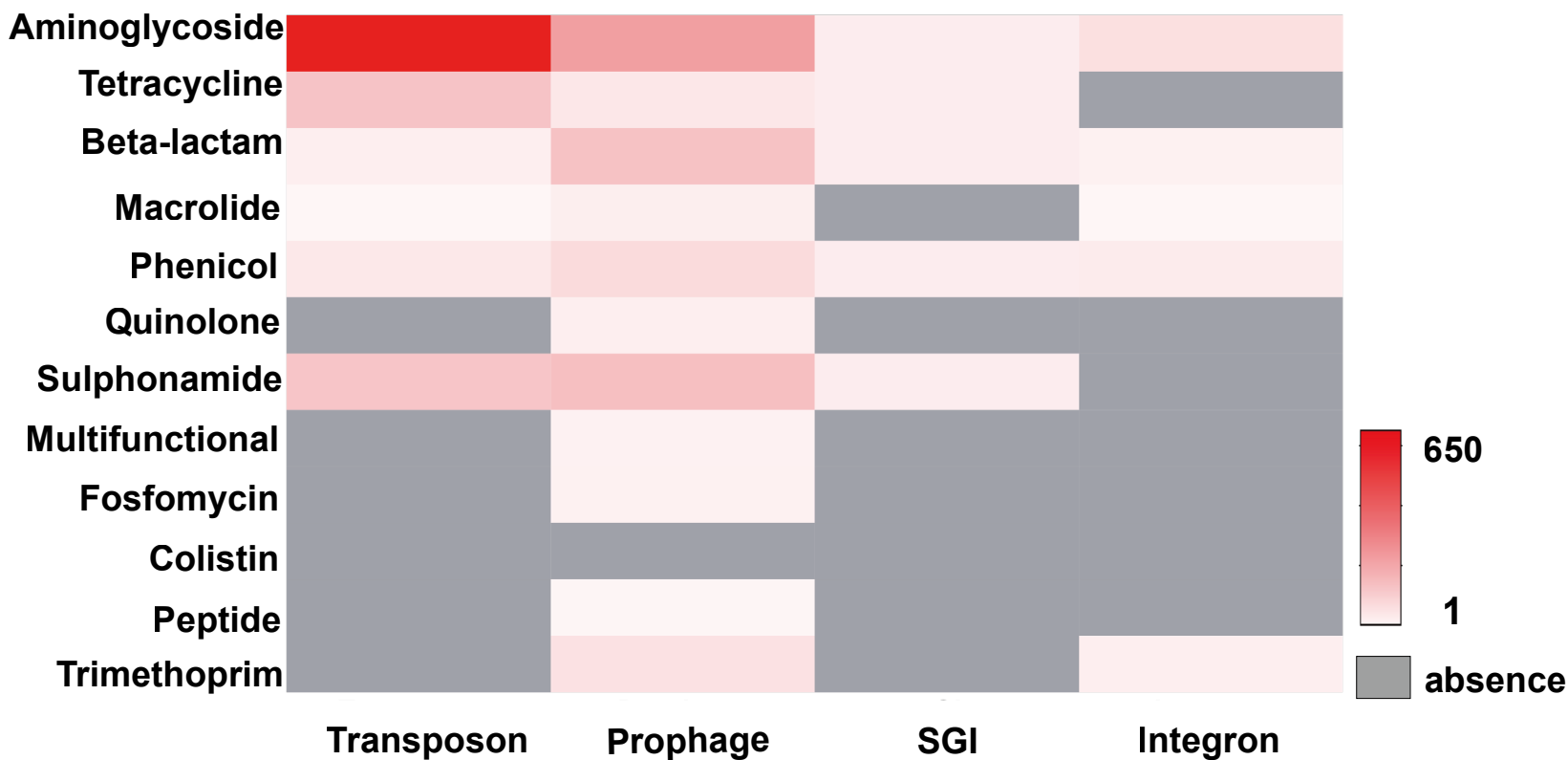
 Derby
**Source**
 Human

 Animal

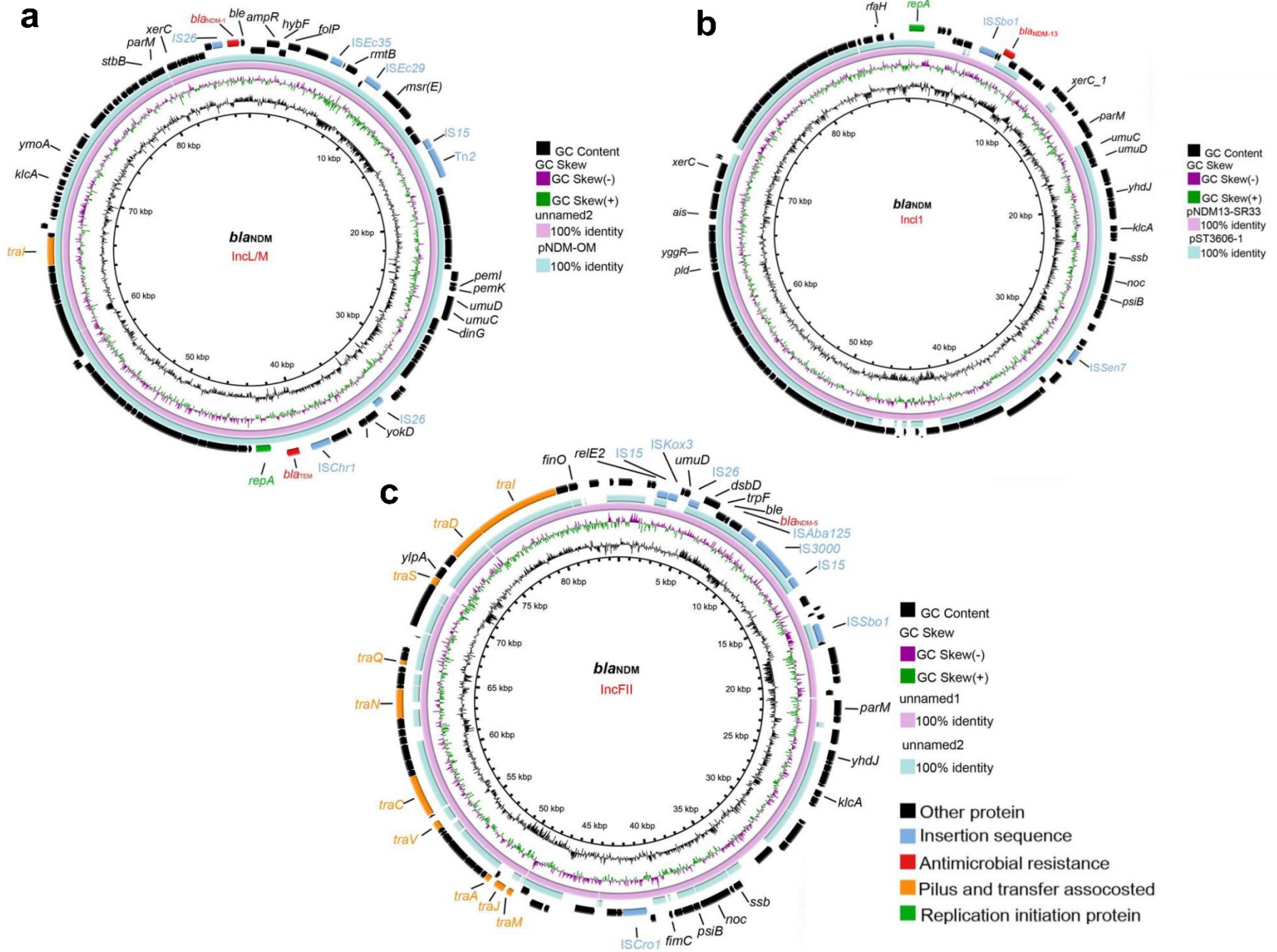
 Missing

 presence

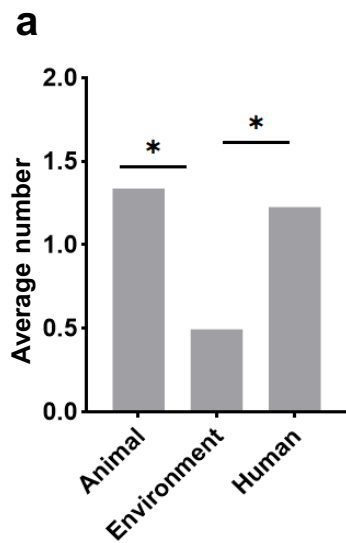
 absence

**a****b****c**

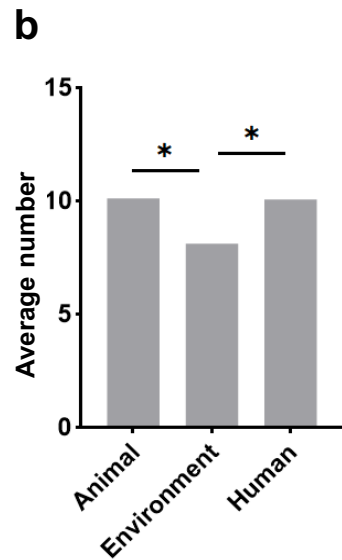




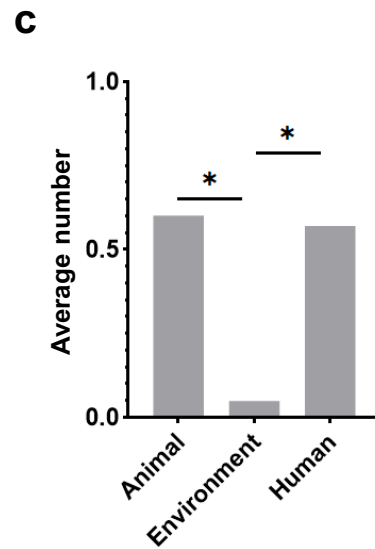
# Plasmid



# Prophage



# Integron



# Transposon

