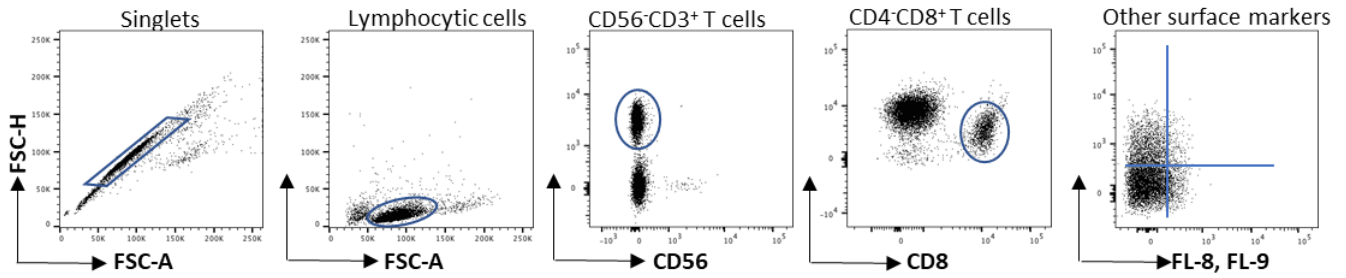
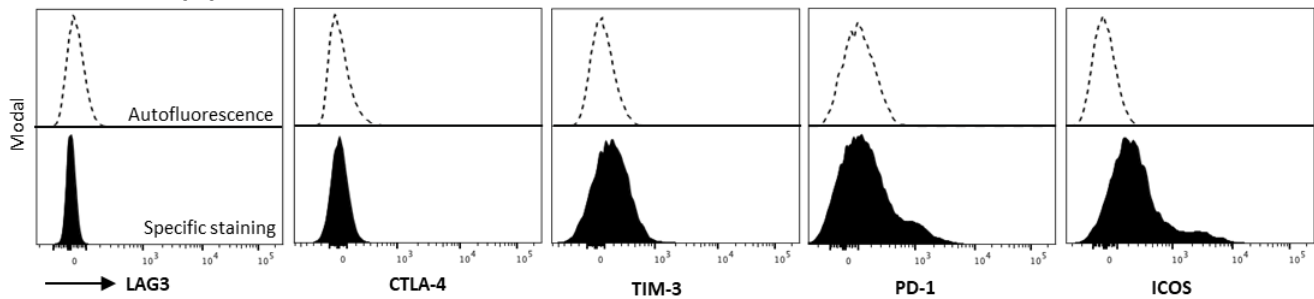


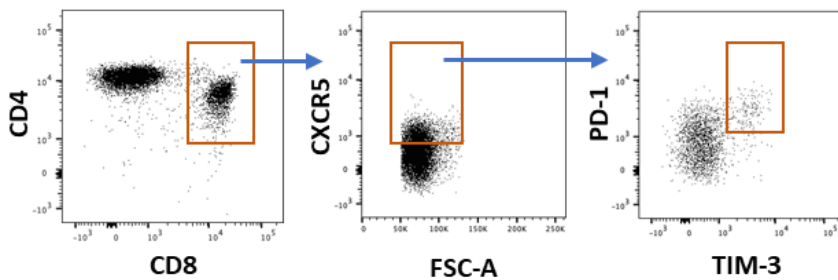
**Supplementary figures**



**In CD8<sup>+</sup> T cell subpopulations**



**Suppl. Fig. 1.** The gating strategy used for immunophenotyping by flow cytometry (upper panel) is shown together with representative histograms for immune checkpoint receptor expression in cytotoxic T cells (lower panel).



**Suppl. Fig. 2.** The gating strategy used for determining the TIM-3 and PD-1 expression on CXCR5-positive cytotoxic CD8<sup>+</sup> T cells from the lymph nodes. Representative dot plots from an immunophenotyping analysis by flow cytometry are demonstrated. The orange square on the left-hand-side plot shows a subpopulation of cells co-expressing TIM-3 and PD-1.

