

CORRECTION

Vol. 100, 970-978, 1992

Ling, V., and Assmann, S.M. Cellular Distribution of Calmodulin and Calmodulin-Binding Proteins in *Vicia faba* L.
The legend for Figure 4 was printed with errors. The figure and corrected legend are reprinted below.

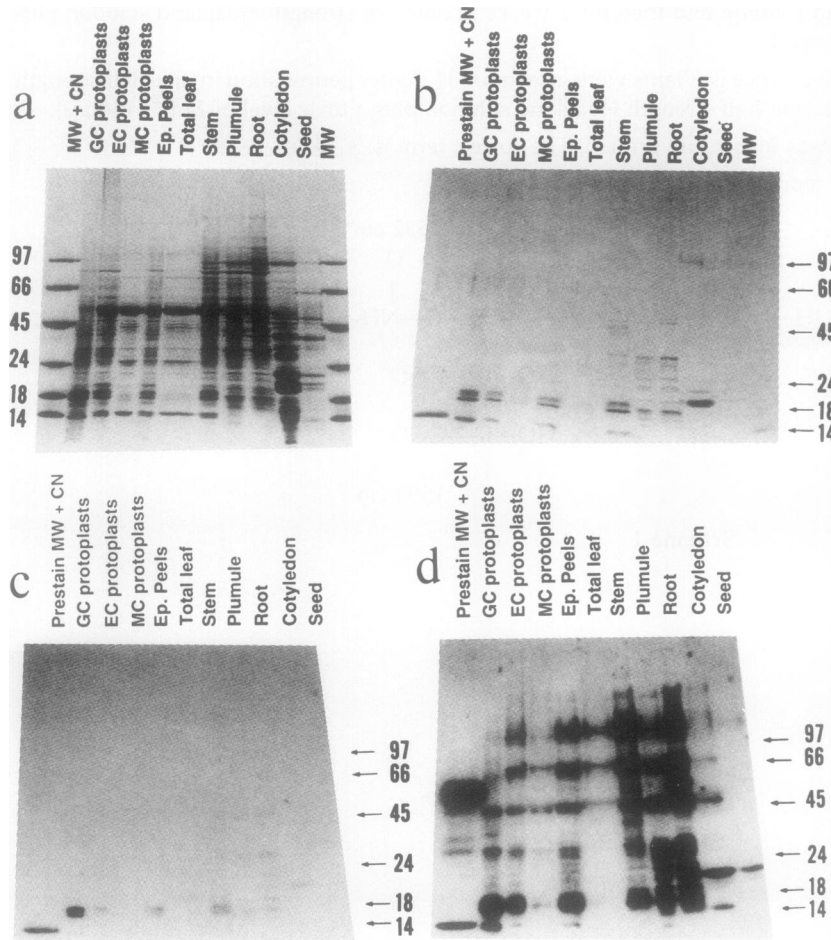


Figure 4. Results of ^{125}I -CaM overlay assays. MW + CN, Mol wt standards (Sigma) and calcineurin (10 ng), respectively. GC, Guard cell; EC, epidermal cell; MC, mesophyll cell; Ep. Peels, abaxial epidermal peels; *M*, are expressed in thousands. a, Protein profiles of *Vicia* protoplasts, tissues, and organs. Protein extracts (20 μg) were fractionated by 5 to 20% gradient SDS-PAGE followed by Coomassie blue staining. b, Protein profiles of *Vicia* extracts in duplicate gel after electrotransfer. After electrotransfer, the gel was stained in Coomassie blue to determine retained proteins. Lane 1 contained 5 μg of prestained protein standards (Bethesda Research Laboratories) and 10 ng of calcineurin as Ca^{2+} /CaM-binding control. c, ^{125}I -CaM overlay assay + EDTA. Gel electroblot of *Vicia* proteins incubated with ^{125}I -CaM overlay buffers in the presence of 1 mM EDTA. d, ^{125}I -CaM overlay assay + CaCl_2 . Same blot as c, washed and incubated with ^{125}I -CaM overlay buffers in the presence of 1 mM CaCl_2 .