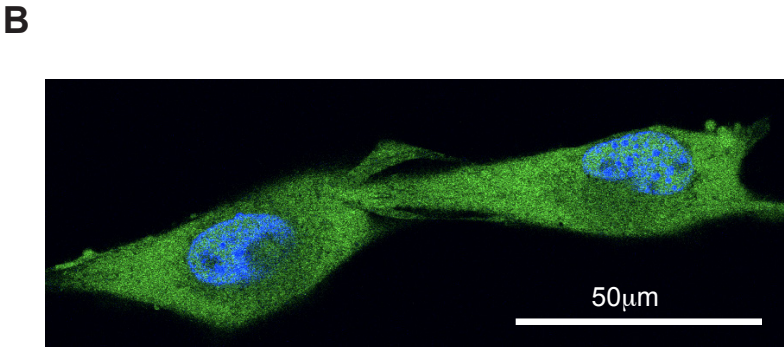
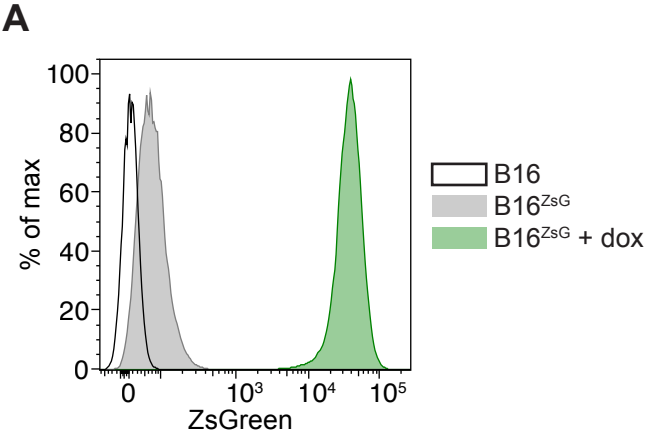
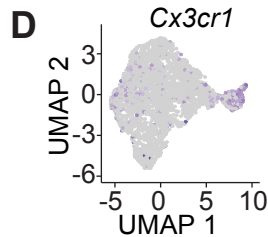
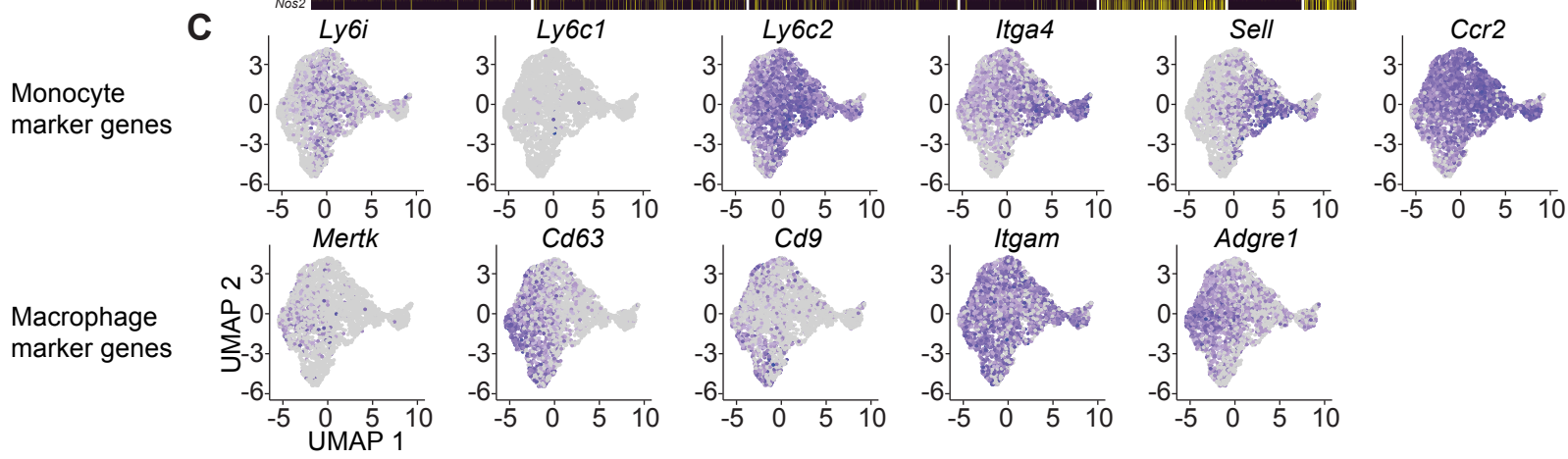
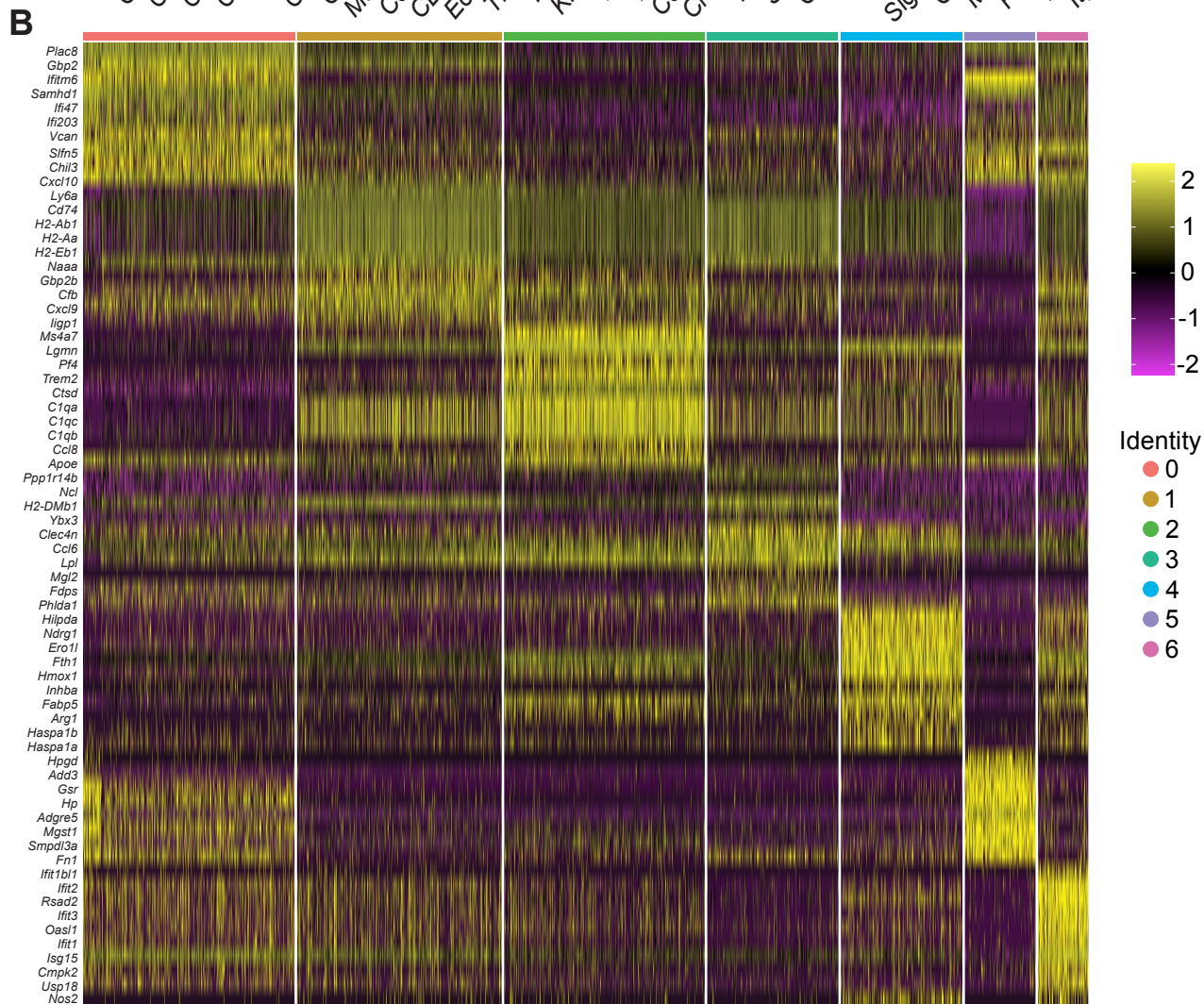
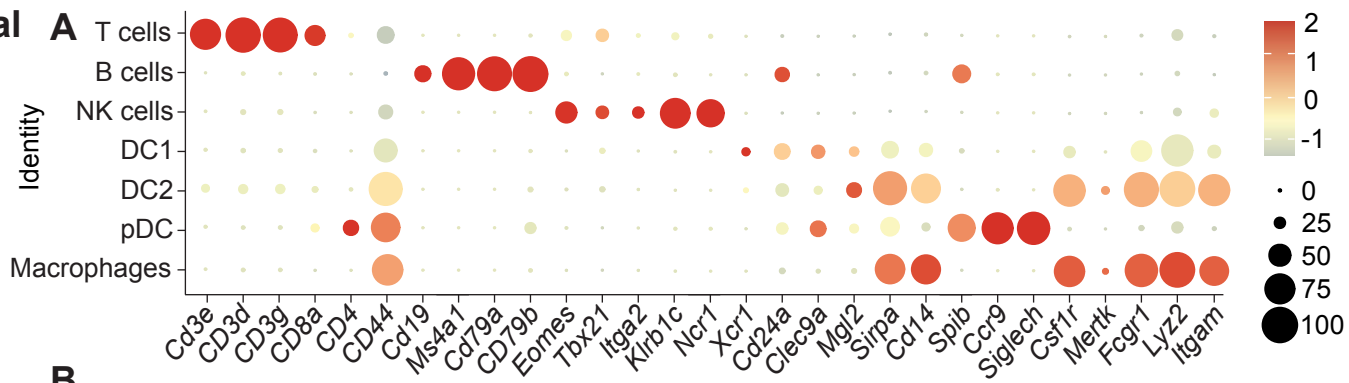


Supplemental figure 1

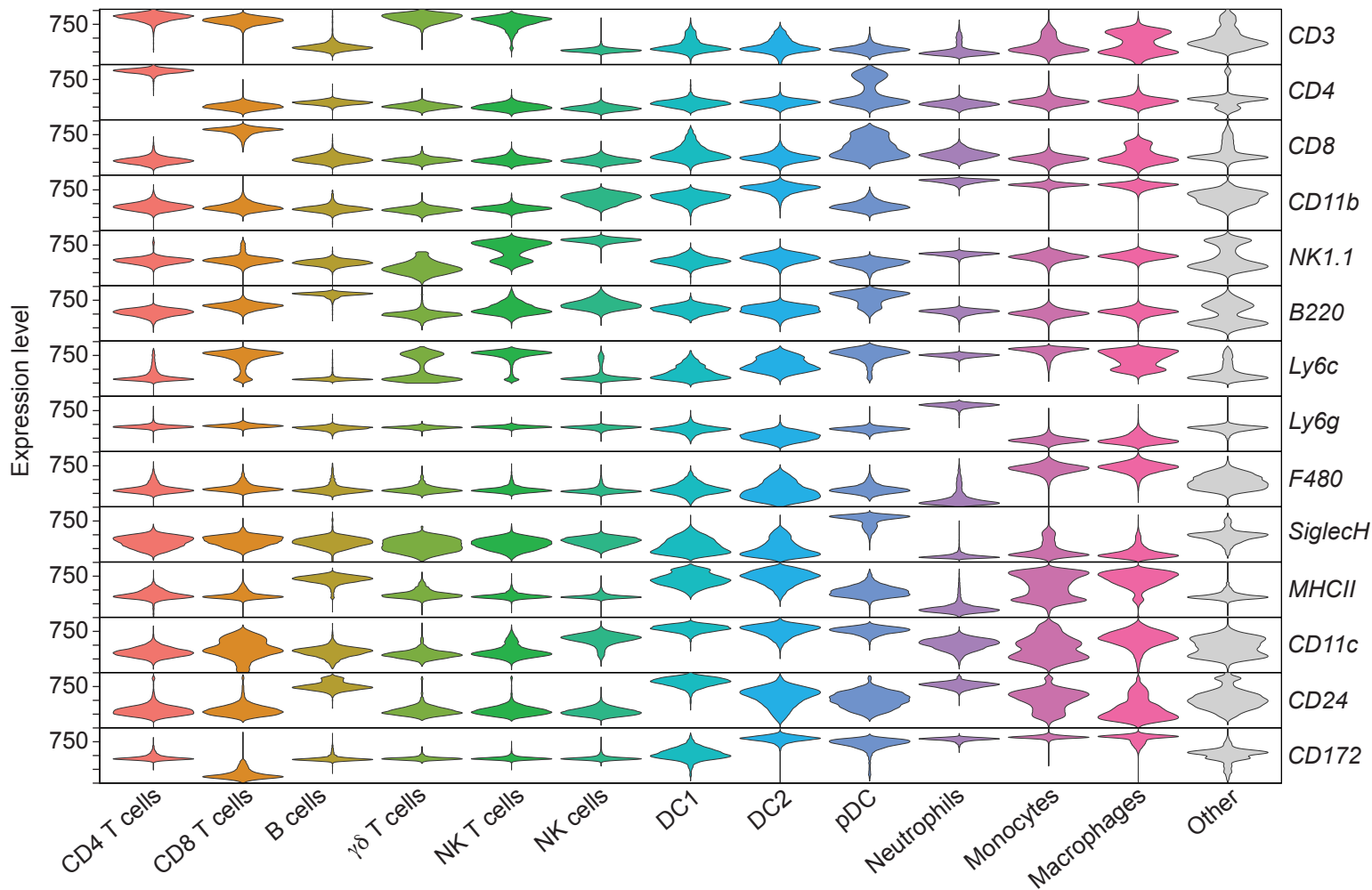


Supplemental figure 2

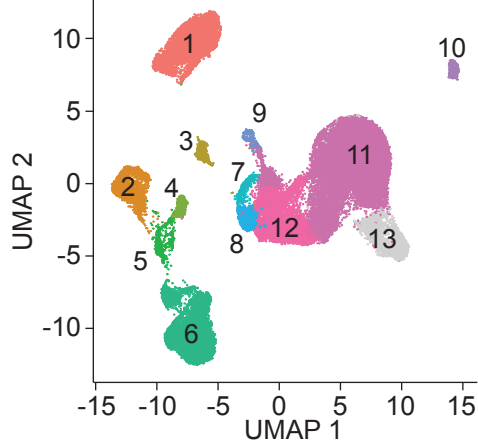


Supplemental figure 3

A Defining the populations

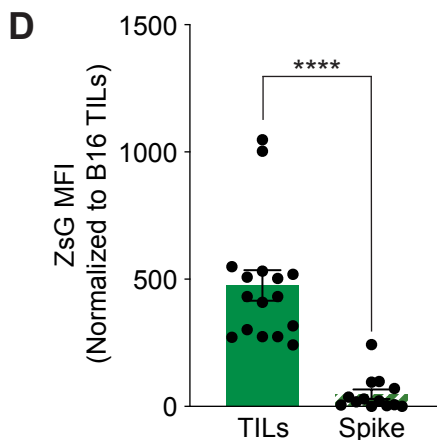
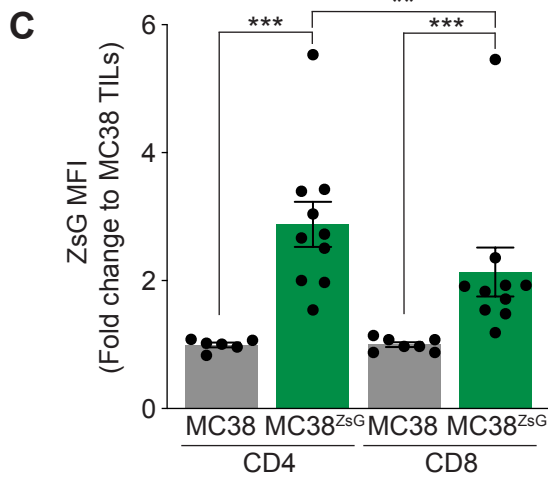
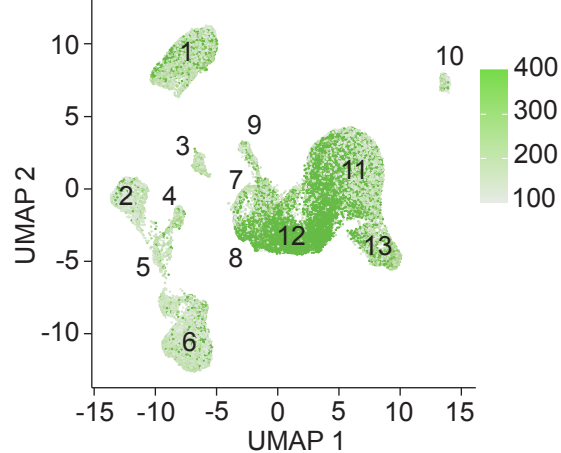


B TILs from MC38^{ZsG} tumors



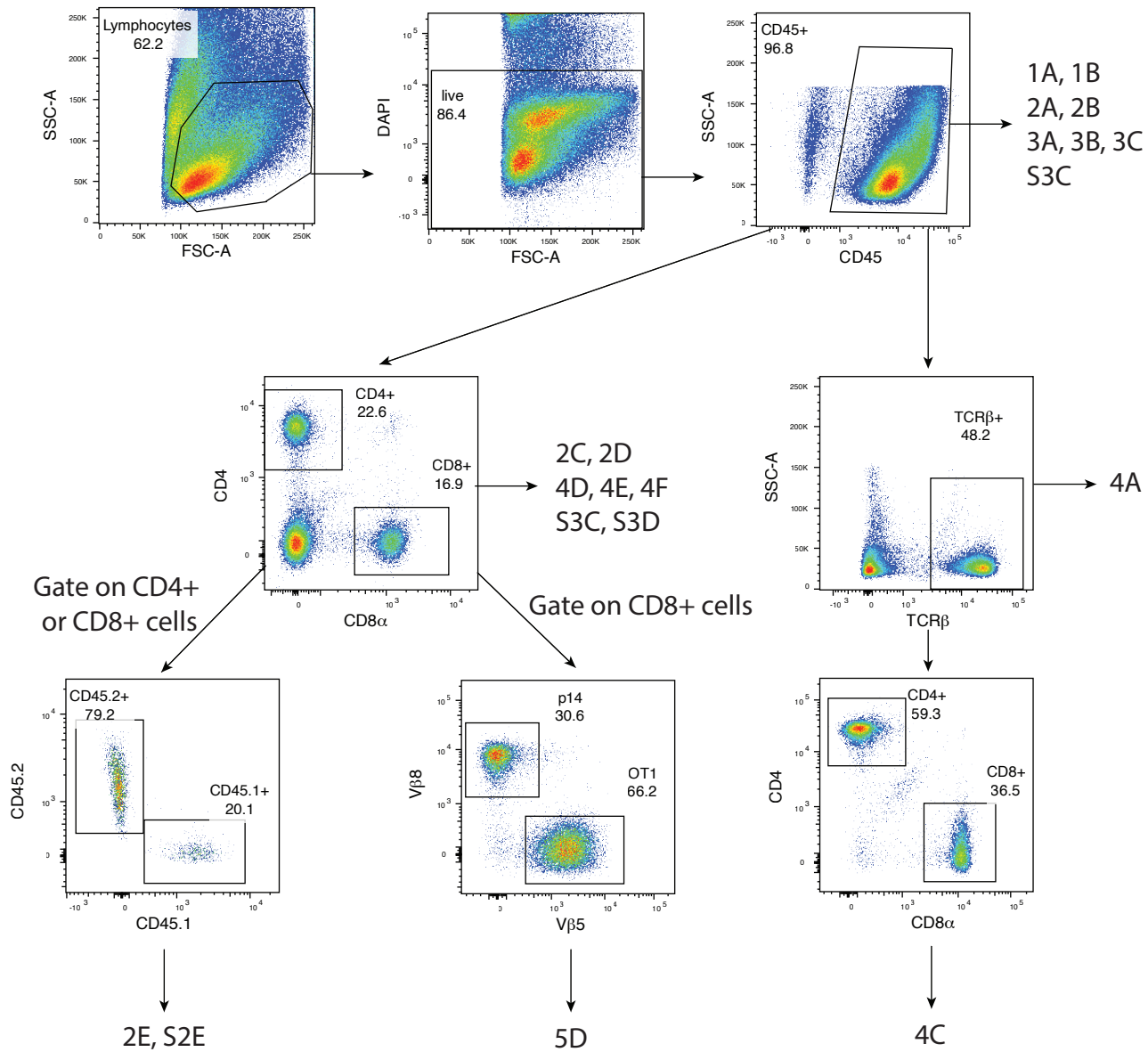
- (1) CD4 T cells
- (2) CD8 T cells
- (3) B cells
- (4) $\gamma\delta$ T cells
- (5) NKT cells
- (6) NK cells
- (7) DC1
- (8) DC2
- (9) pDC
- (10) Neutrophils
- (11) Monocytes
- (12) Macrophages
- (13) Others

ZsG fluorescence



Supplemental figure 5

A



B

