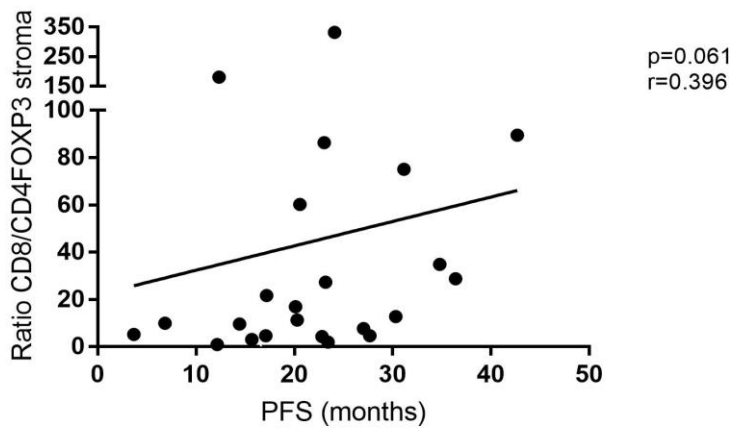
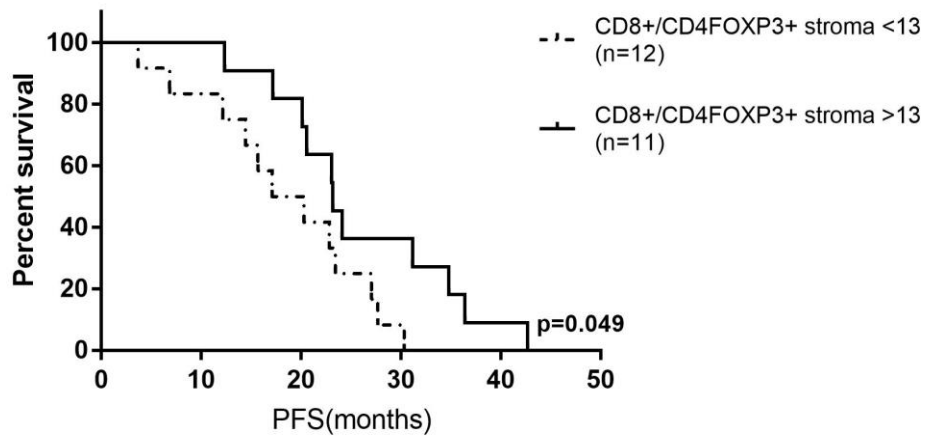


a)



b)



Supplementary Figure 3. Association analysis between CD8+/CD4FOXP3+ ratio and progression free survival (PFS).

a) Correlation between PFS and T cells in stroma. CD4+FOXP3+ cells were the only immune population associated with individual survival ($p=0.036$) in the total population. **b)** Data analyzed divided by experimental group showed that subjects included in the placebo arm were the one driven this significance **c)** Kaplan-Meier curves regarding CD8+/CD4FOXP3+ ratio and PFS, where higher values than 13 (median cut-off) are associated with longer PFS ($p=0.049$).