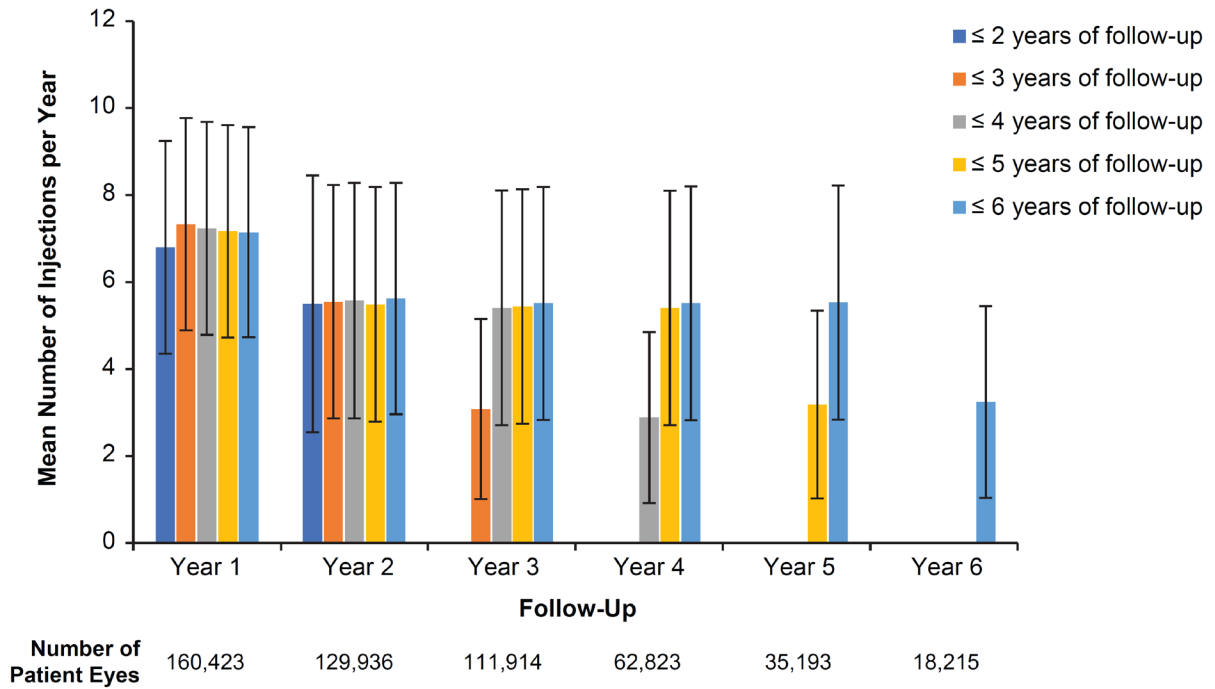


A. Number of anti-VEGF injections per year^a



B. Mean interval between of anti-VEGF injections^a

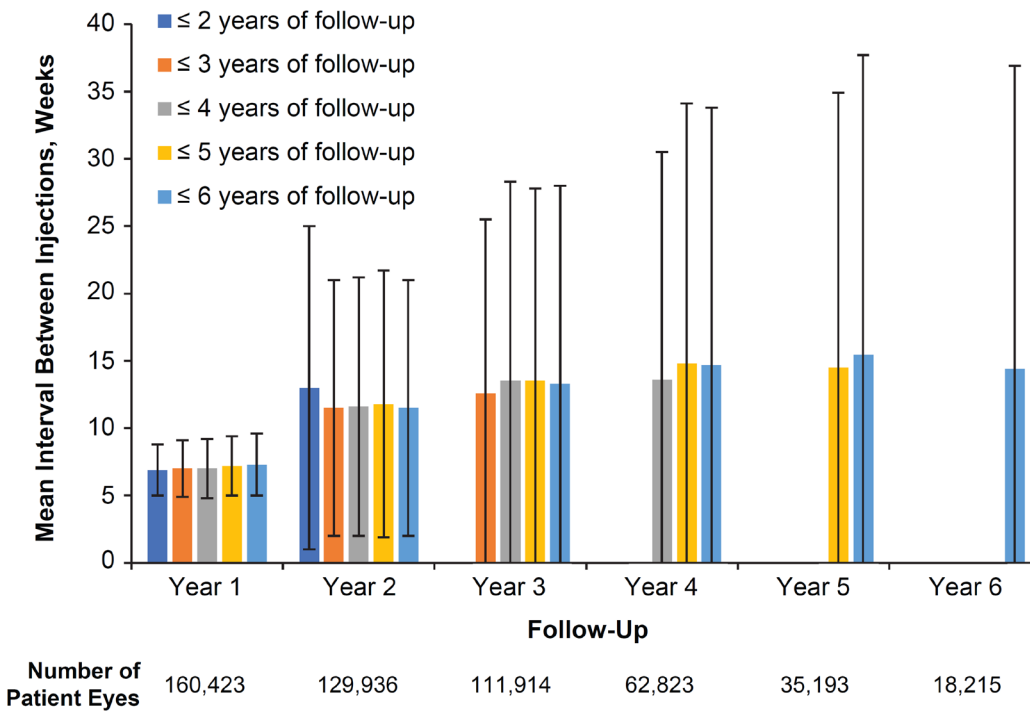


Figure S4. Treatment patterns in the overall cohort for patients with at least 2 years' follow-up. **(A)** Injection frequency over time as the mean number of anti-VEGF intravitreal injections over follow-up years 1 through 6 according to the number of years of follow-up. **(B)** Intervals

between treatments as the mean number weeks between injections over follow-up years 1 through 6 according to the number of years of patients' follow-up.

^a As part of this study's inclusion exclusion criteria, patients were required to contribute a minimum of 2 years of follow-up, therefore there are no patients with 1 year of follow-up.

VEGF = vascular endothelial growth factor.

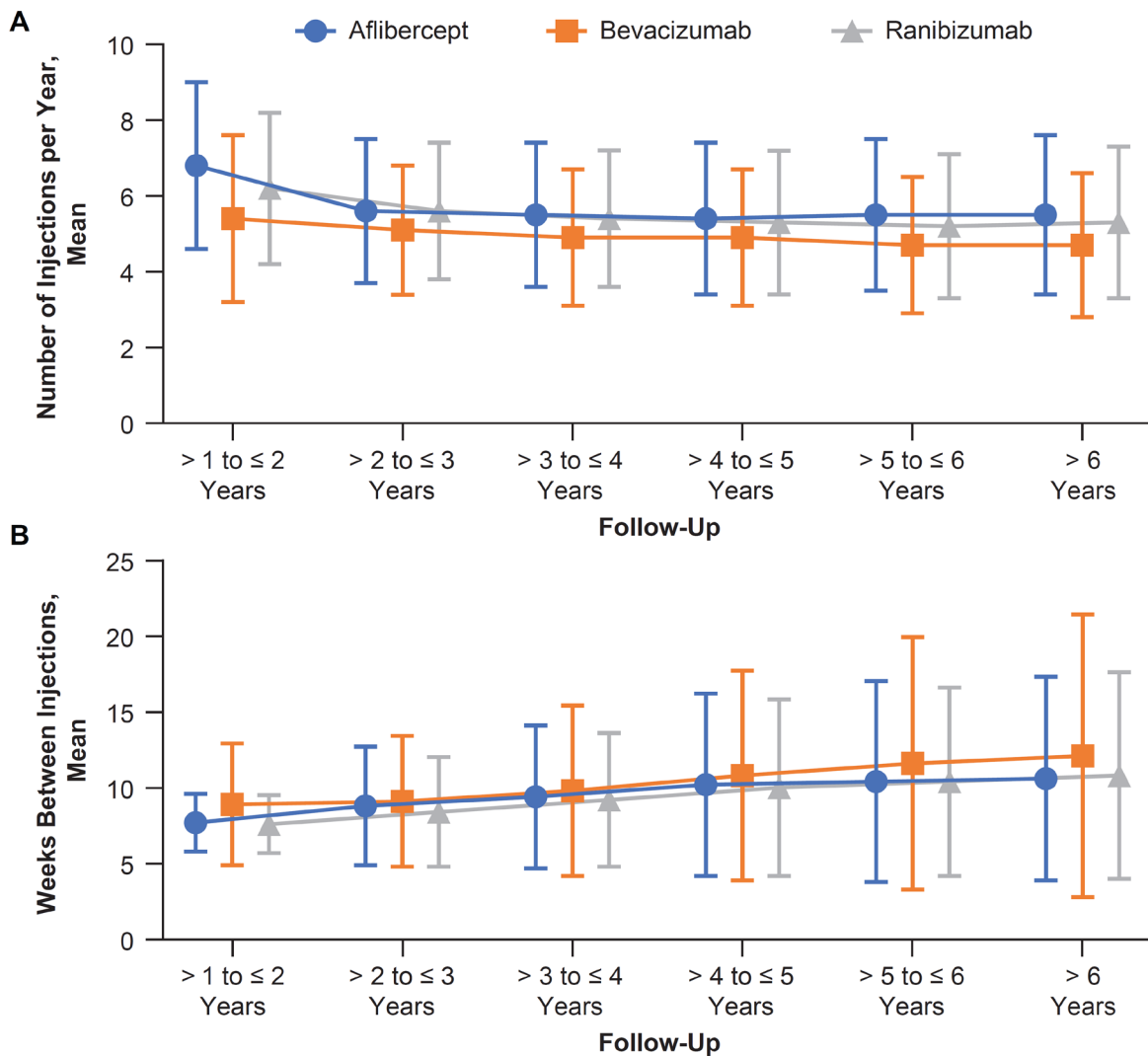


Figure S6. Treatment patterns by anti-VEGF agent^a (aflibercept, bevacizumab, or ranibizumab) in the overall cohort for patients with at least 2 years' follow-up. **(A)** Injection frequency over time as the mean number of anti-VEGF intravitreal injections. **(B)** Interval between treatments as the mean number of weeks between injections.

^a Excludes patients treated with more than 1 anti-VEGF agent during the follow-up period.

VEGF = vascular endothelial growth factor.