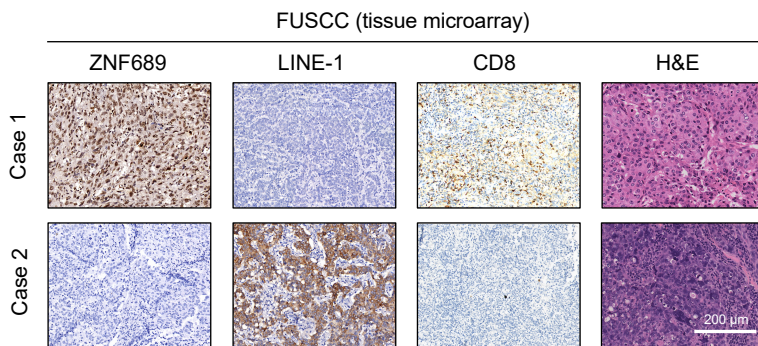
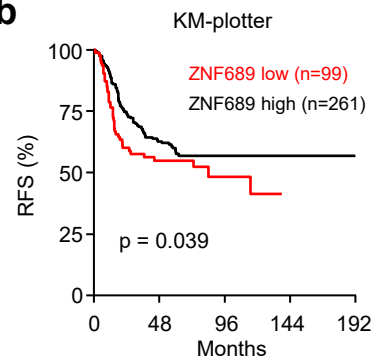


Supplementary information, Fig. S13

a



b



c

		LINE-1		HLA-ABC		CD8	
		High	Low	High	Low	High	Low
ZNF689	High	14	42	35	21	38	18
	Low	27	17	16	28	20	24
<i>P</i>		<0.001		0.017		0.040	

Supplementary information, Fig. S13 Clinical validation of ZNF689 expression.

a Representative images of IHC staining of ZNF689, LINE-1 ORF1p, and CD8 and H&E staining in primary tumors from TNBC patients. Scale bar, 200 μ m. **b** Kaplan-Meier analysis of the RFS of patients with basal-like breast cancer from KM-Plotter grouped according to the expression of ZNF689. **c** Analysis of the association between ZNF689 and LINE-1 ORF1p, HLA-ABC and CD8 expression levels in patients treated with anti-PD-1 therapy. *P* values were determined using the log-rank test (**b**) and Pearson's chi-square test (**c**).