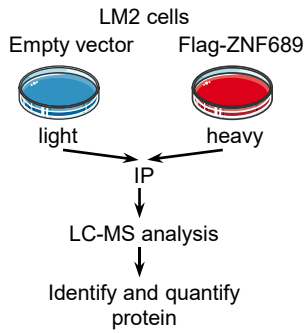


Supplementary information, Fig. S5

a

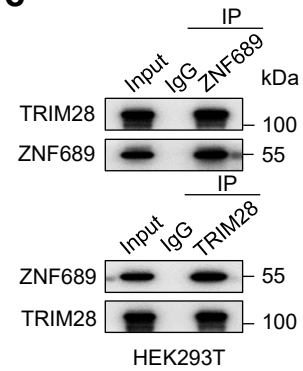


b

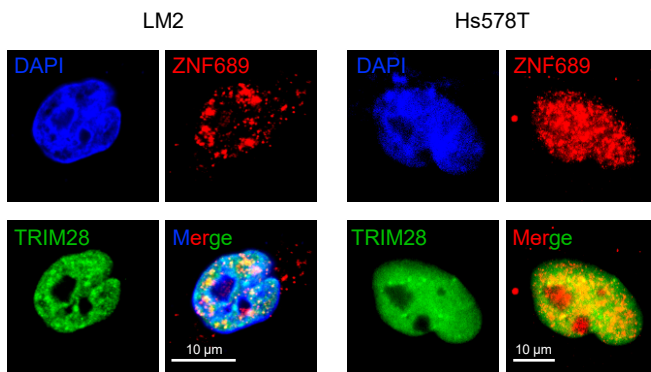
Table. The top 8 proteins of accurate quantification and significance.

Gene names	Unique peptides	Log ₂ (Ratio H/L)	p
ZNF689	12	4.968	8.09E-08
TRIM28	28	4.799	2.00E-07
NT5C2	10	3.798	2.48E-05
CKAP4	2	2.696	0.0017
RPL10;RPL10L	4	2.434	0.0040
RPS11	5	2.272	0.0065
RPL19	4	2.215	0.0077
KPNA3;KPNA4	2	2.133	0.0098

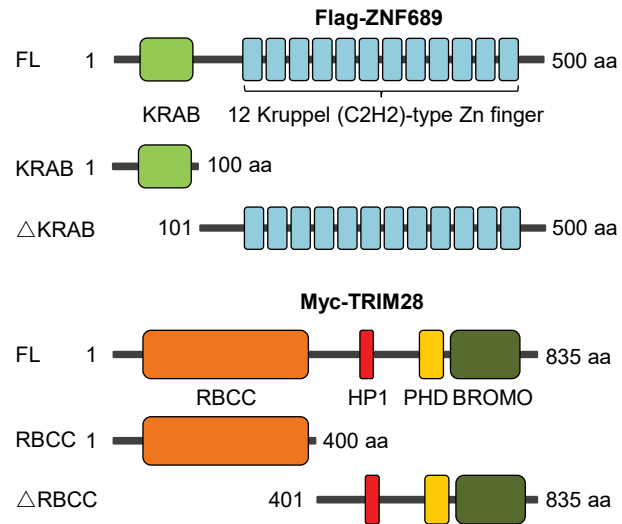
c



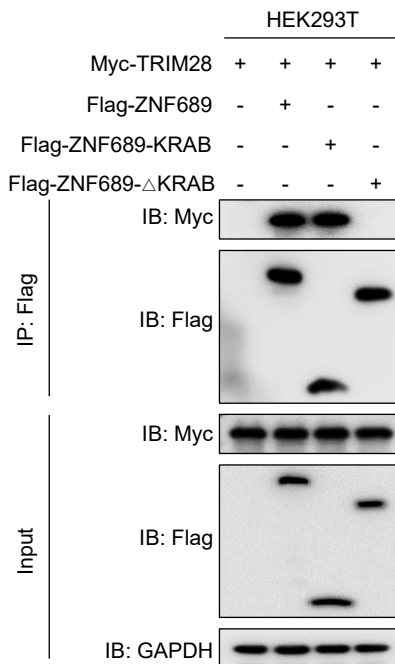
d



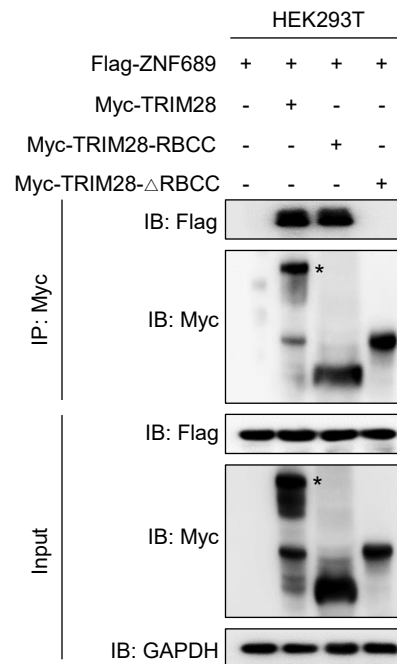
e



f



g



Supplementary information, Fig. S5 ZNF689 interacts with TRIM28.

a Scheme showing the steps used to identify ZNF689-interacting proteins. **b** The top 8 ZNF689-interacting proteins of accurate quantification and significance. **c** Co-IP experiments of endogenous ZNF689 and TRIM28 followed by western blotting in HEK293T cells. **d** IF staining of ZNF689 and TRIM28 in LM2 and Hs578T cells. Cell nuclei were counterstained with DAPI. Scale bar, 10 μm . **e** Diagrams of Flag-ZNF689 and Myc-TRIM28 and their deletion mutants. **f, g** HEK293T cells were transfected with plasmids encoding Flag-ZNF689 (**f**) and Myc-TRIM28 (**g**) and their deletion mutants. After 48 h of transfection, the cells were harvested for sequential western blotting analysis. Single asterisks represent specific bands.