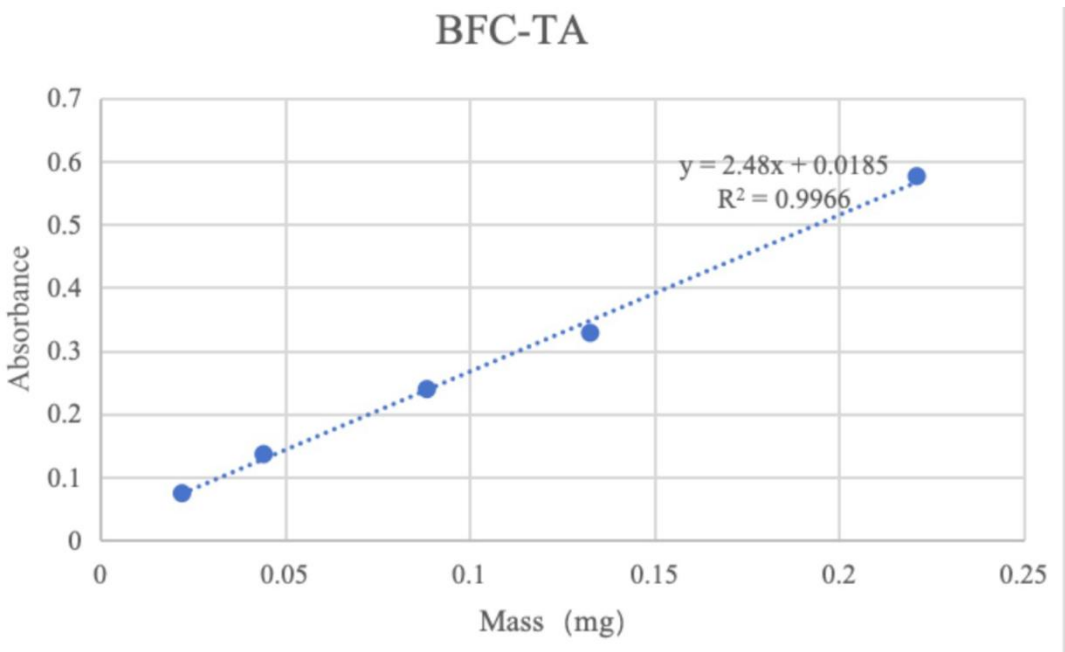


1

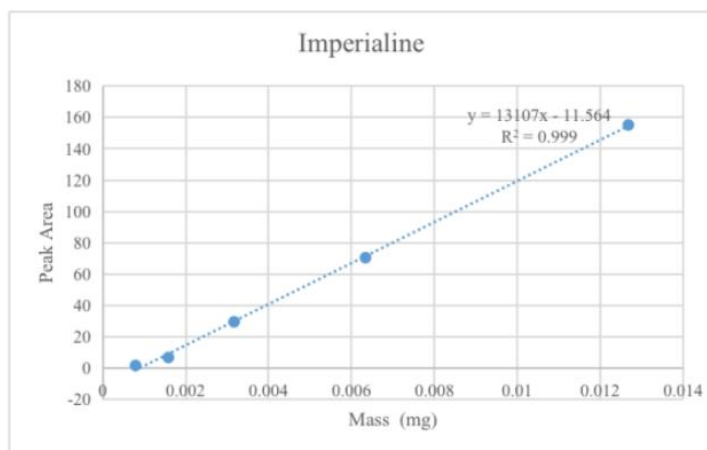
2 *Fig.S1* Graphical Abstract of this article



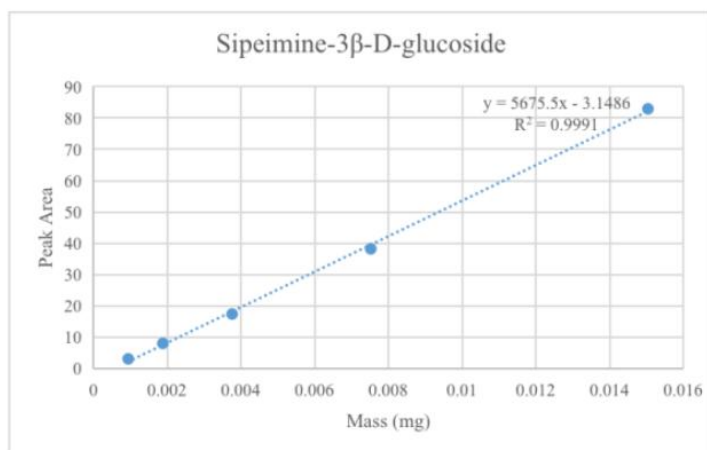
3

4 *Fig.S2* Standard curve of Imperialine by ultraviolet spectrophotometry for  
 5 determining the content of BFC-TA

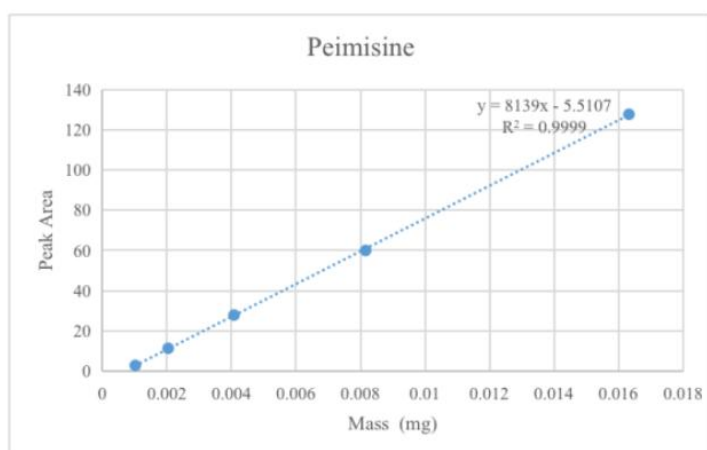
**A**



**B**



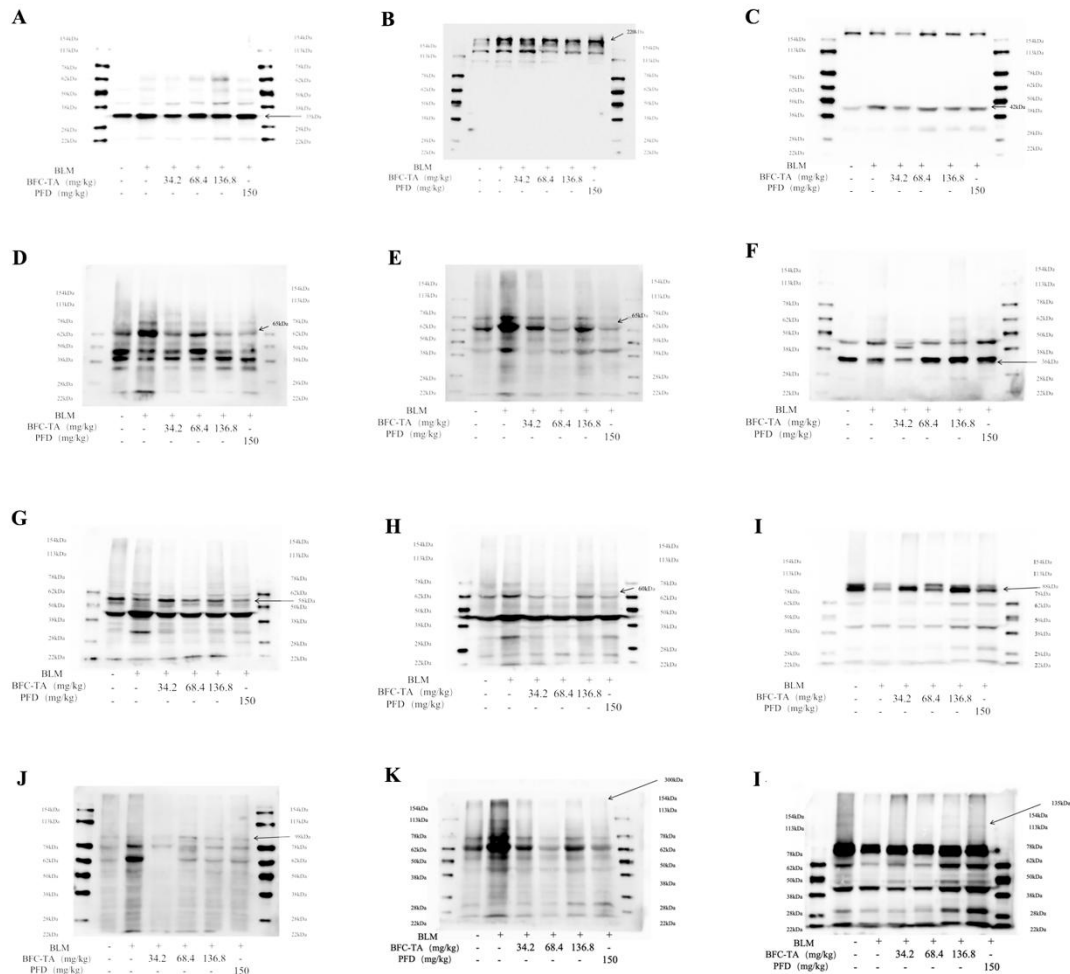
**C**



6

7 *Fig.S3* Standard curves of Imperialine, Sipeimine-3β-D-glucoside and peimisine were

8 prepared by HPLC-DAD-ELSD



9  
 10 *Fig.S4* (A) Whole membrane of GAPDH, protein molecular weight is 35kDa; (B)  
 11 Whole membrane of Collagen I, protein molecular weight is 220kDa; (C) Whole  
 12 membrane of  $\alpha$ -SMA, protein molecular weight is 42kDa; (D) Whole membrane of  
 13 NF- $\kappa$ B, protein molecular weight is 65kDa; (E) Whole membrane of p-NF- $\kappa$ B,  
 14 protein molecular weight is 65kDa; (F) Whole membrane of I $\kappa$ B $\alpha$ , protein molecular  
 15 weight is 36kDa; (G) Whole membrane of Smad2, protein molecular weight is 58kDa;  
 16 (H) Whole membrane of p-Smad2, protein molecular weight is 60kDa; (I) Whole  
 17 membrane of STAT3, protein molecular weight is 88kDa; (J) Whole membrane of  
 18 p-STAT3, protein molecular weight is 98kDa; (K) Whole membrane of Fibronectin,

19 protein molecular weight is 300kDa; (L) Whole membrane of E-Cadherin, protein  
20 molecular weight is 65kDa. This membrane is obtained by washing the whole  
21 membrane of STAT3 and then incubating it with Fibronectin primary antibody.