

## Supplementary data

Journal: Applied Microbiology and Biotechnology

### **Milk Microbiome Transplantation: Recolonizing Donor Milk with Mother's Own Milk Microbiota**

Lisa F. Stinson<sup>1\*</sup>, Jie Ma<sup>1</sup>, Ching Tat Lai<sup>1</sup>, Alethea Rea<sup>2</sup>, Sharon L. Perrella<sup>1</sup>, and Donna T. Geddes<sup>1</sup>

<sup>1</sup> School of Molecular Sciences, The University of Western Australia, Perth, Australia

<sup>2</sup> Mathematics and Statistics, Murdoch University, Perth, Australia

\* Corresponding author

[lisa.stinson@uwa.edu.au](mailto:lisa.stinson@uwa.edu.au)

+6148 6488 3200



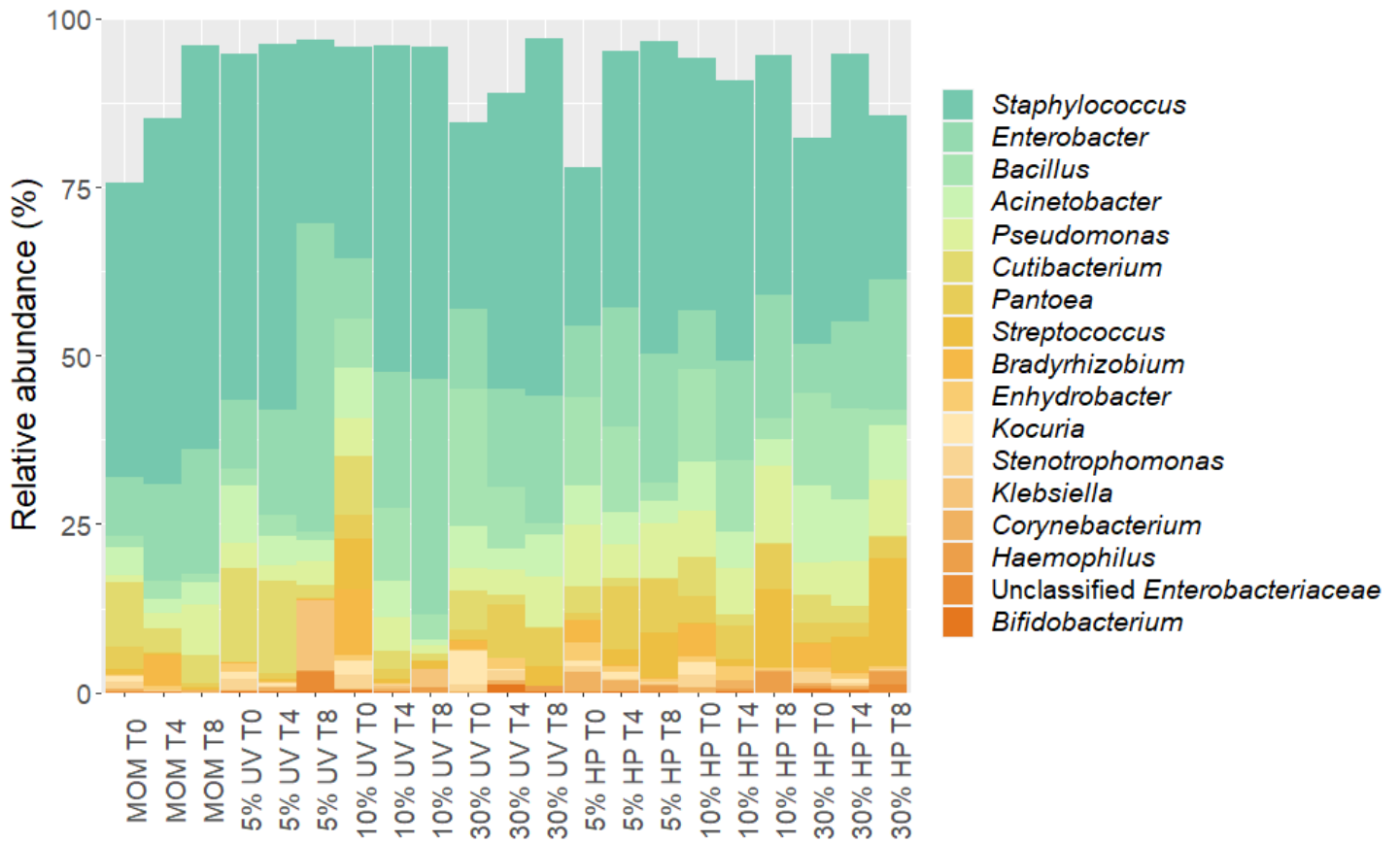
<i>Pseudomonas</i>	3	0	17	0	8	7	0	2	5	24	7	3	4	0
<i>Ralstonia</i>	0	37	1	0	0	0	0	0	0	0	0	0	0	0
<i>Serratia</i>	0	0	1	0	0	0	0	0	0	0	0	0	0	0
<i>Skermanella</i>	0	0	0	0	0	0	0	0	0	1	0	0	0	0
SN8	0	1	0	2	1	0	0	0	0	0	0	0	1	0
<i>Sphingomonas</i>	0	1	0	0	0	0	0	0	0	0	0	0	0	0
<i>Staphylococcus</i>	0	302	86	92	17	17	0	32	41	110	25	42	39	3
<i>Stenotrophomonas</i>	0	124	14	2	6	5	0	1	0	17	15	22	0	0
<i>Streptococcus</i>	0	380	19	3	1	1	0	1	1	62	16	0	0	0
<i>Thermoactinomyces</i>	0	0	0	213	0	0	0	0	0	0	0	0	0	0
Unclassified <i>Bacillaceae</i>	0	2	0	1	2	0	0	1	1	6	1	1	1	0
Unclassified <i>Comamonadaceae</i>	0	6194	17	0	0	0	0	0	0	0	0	2	0	0
Unclassified <i>Enterobacteriaceae</i>	1	0	3	0	2	2	0	7	3	13	1	0	3	0
Unclassified <i>Erwiniaceae</i>	0	0	0	0	0	1	0	0	0	0	0	0	0	0
Unclassified <i>Micrococcaceae</i>	0	0	0	1	0	0	0	0	0	0	0	0	0	0
Unclassified <i>Moraxellaceae</i>	0	0	1	0	0	1	0	0	1	0	0	1	1	0
Unclassified <i>Propionibacteriaceae</i>	0	0	0	0	0	0	0	0	0	1107	0	0	0	0
Unclassified <i>Pseudomonadaceae</i>	0	0	1	1	1	2	0	0	0	0	3	0	1	0
Unclassified <i>Rhizobiaceae</i>	0	0	0	0	0	0	0	0	0	1	0	0	0	0
Unclassified <i>Staphylococcaceae</i>	0	0	0	0	0	0	0	0	0	1	0	1	0	0
Unclassified <i>Streptococcaceae</i>	0	0	0	0	0	1	0	0	0	0	0	0	0	0
Unclassified <i>Weeksellaceae</i>	0	0	0	1	0	1	0	0	0	1	0	0	0	0
Unclassified <i>Xanthobacteraceae</i>	0	0	0	0	0	0	0	0	0	0	0	0	1	0
Unclassified <i>Xanthomonadaceae</i>	0	0	0	0	0	0	0	0	0	0	1	0	0	0
<i>Yokenella</i>	0	0	0	0	0	0	0	0	0	2	0	0	0	0

**Supplementary Table 2:** Comparison of bacterial titers in recolonized Holder pasteurized and recolonized UV-C treated milk samples. Data are P values derived from Wilcoxon signed-rank test. \* Denotes significant P values.

% Inoculation	Time	MSA	Nutrient agar	MRS	Wilkins Chalgren
5%	T0	0.44	0.085	0.20	0.27
	T4	0.025 *	0.12	0.58	0.94
	T8	0.16	0.30	0.11	0.098
10%	T0	0.94	0.61	0.89	0.028 *
	T4	0.013 *	0.83	0.58	0.14
	T8	0.074	0.57	0.17	0.20
30%	T0	1	0.83	0.60	0.050
	T4	0.098	0.41	0.29	0.13
	T8	0.055	0.21	0.036 *	0.027 *

**Supplementary Table 3:** Comparison of bacterial titers in fresh (T0) MOM and recolonized milk samples. Data are P values derived from Wilcoxon signed-rank test. \* Denotes significant P values.

Pasteurization method	% Inoculation	Time	MSA	Nutrient agar	MRS	Wilkins Chalgren
UV	5%	T0	0.0039 *	0.0039 *	0.023 *	0.0039 *
		T4	0.0039 *	0.0091 *	0.023 *	0.0039 *
		T8	0.36	1	0.052	0.82
	10%	T0	0.014 *	0.0039 *	0.022 *	0.0039 *
		T4	0.014 *	0.16	0.022 *	0.13
		T8	0.57	0.73	0.023 *	1
	30%	T0	0.0039 *	0.0039 *	0.076	0.0039 *
		T4	0.19	0.30	0.074	0.34
		T8	0.20	0.20	0.17	0.25
HP	5%	T0	0.0039 *	0.0091 *	0.022 *	0.0039 *
		T4	0.0039 *	0.098	0.022 *	0.13
		T8	0.91	0.91	0.93	1
	10%	T0	0.0039 *	0.0039 *	0.022 *	0.0039 *
		T4	0.014 *	0.13	0.023 *	0.13
		T8	0.30	0.65	0.93	0.65
	30%	T0	0.0039 *	0.0039 *	0.023 *	0.0090 *
		T4	0.73	0.48	0.21	0.77
		T8	0.0091 *	0.055	0.014 *	0.0039 *



**Supplementary Figure 1:** Mean relative abundance the major viable genera (>0.05% relative abundance) across each sample type. MOM: mother's own milk. T0: baseline. T4: 4 hours. T8: 8 hours.