

Figure S1. Cell viability of Rab25- or vector-transfected cancer cells. The MTT assay was performed for cell viability analysis. Rab25, Ras-related protein 25; MTT, (3,4,5-dimethylthiazol-2yl)-5-diphenyl-tetrazolium bromide.

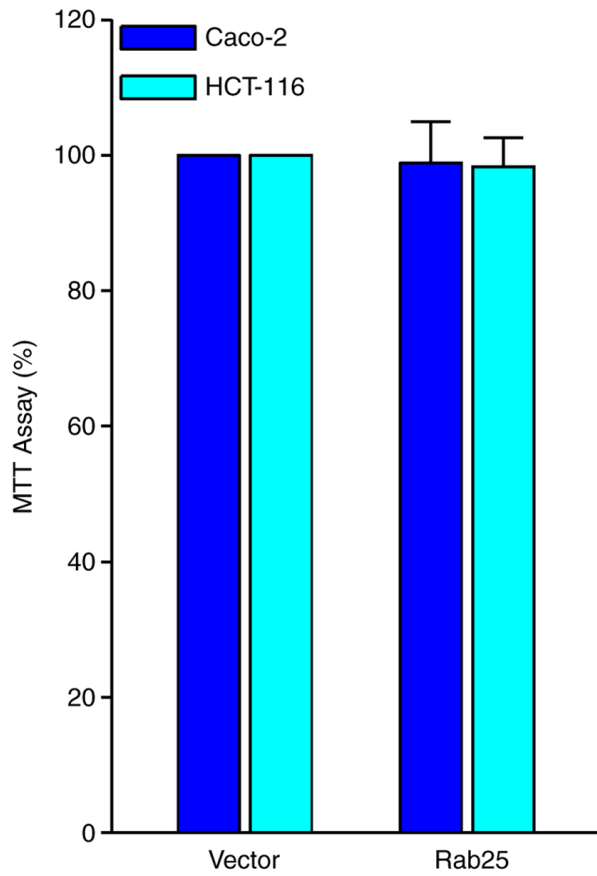


Figure S2. Ectopic expression of Rab25. The cell lysates were analyzed by immunoblotting with the indicated antibodies. Rab25, Ras-related protein 25.

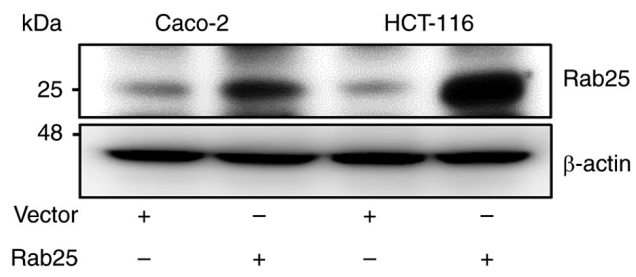


Figure S3. Rab25 suppresses colon cancer cell migration. Wound healing analysis for detecting cell migration. Original magnification x40; scale bar, 200  $\mu$ m. Rab25, Ras-related protein 25.

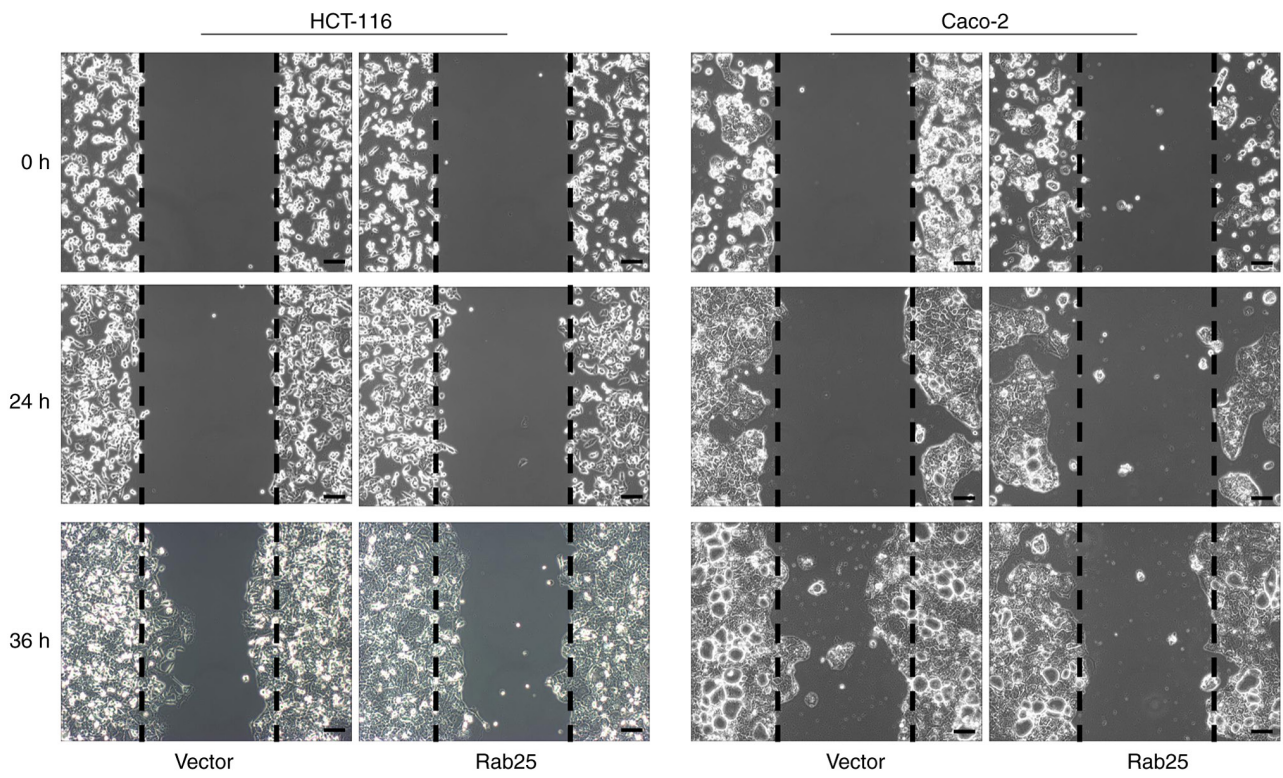


Figure S4. Silencing of Rab25 expression. The cell lysates were analyzed by immunoblotting with the indicated antibodies. Rab25, Ras-related protein 25; si, short interfering.

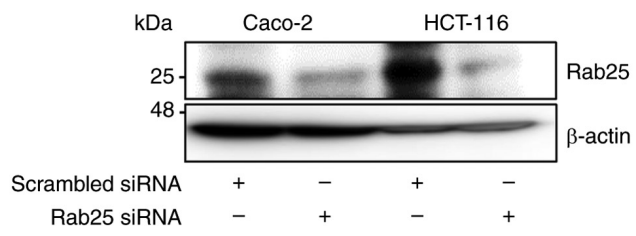


Figure S5. Silencing of Rab25 changes E-cadherin and Snail expression. The expression of E-cadherin and Snail was visualized using immunofluorescence. Original magnification, x400; scale bar, 20  $\mu\text{m}$ . Rab25, Ras-related protein 25; si, short interfering.

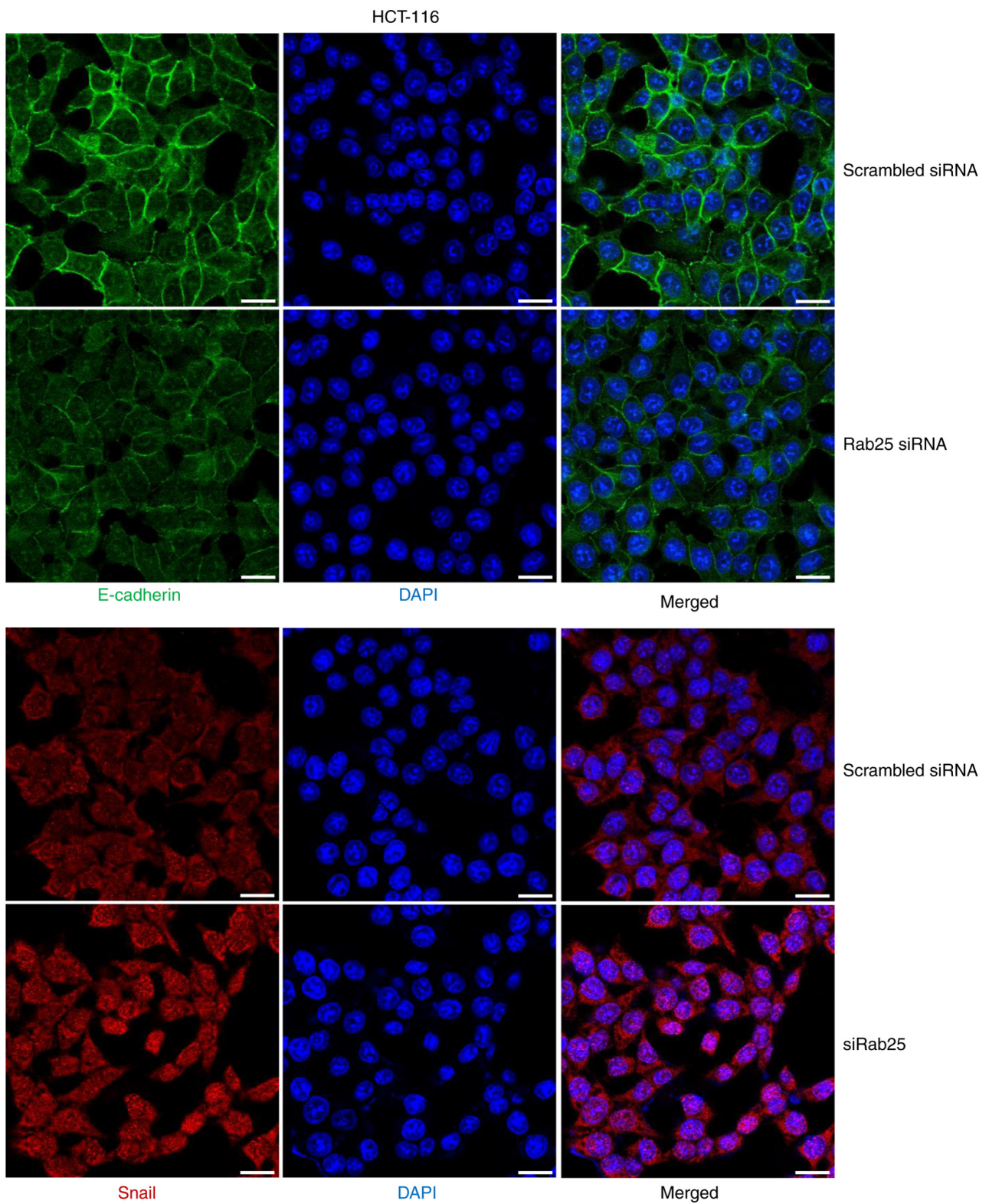




Figure S6. Claudin-7-induced E-cadherin expression. The E-cadherin expression was visualized using immunofluorescence. Original magnification, x400; scale bar, 20  $\mu$ m.

