

Figure S1. External verification of SENP1. (A) The expression profile of differentially expressed genes in head and neck squamous cell carcinoma identified by transcriptome. (B) Venn diagram representation of one overlapped gene. SENP1, SUMO-specific peptidase 1.

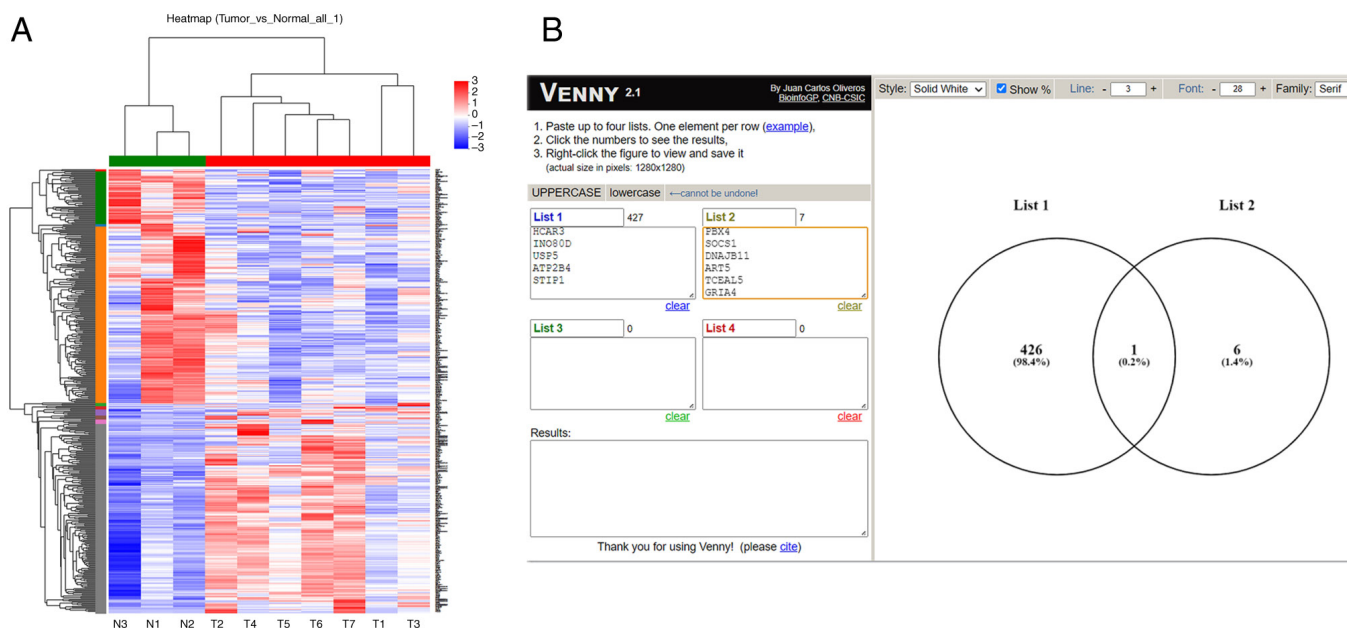


Figure S2. Kaplan-Meier survival curves of overall survival of all groups according to clinical traits age, sex, stage and tumor-node-metastasis.

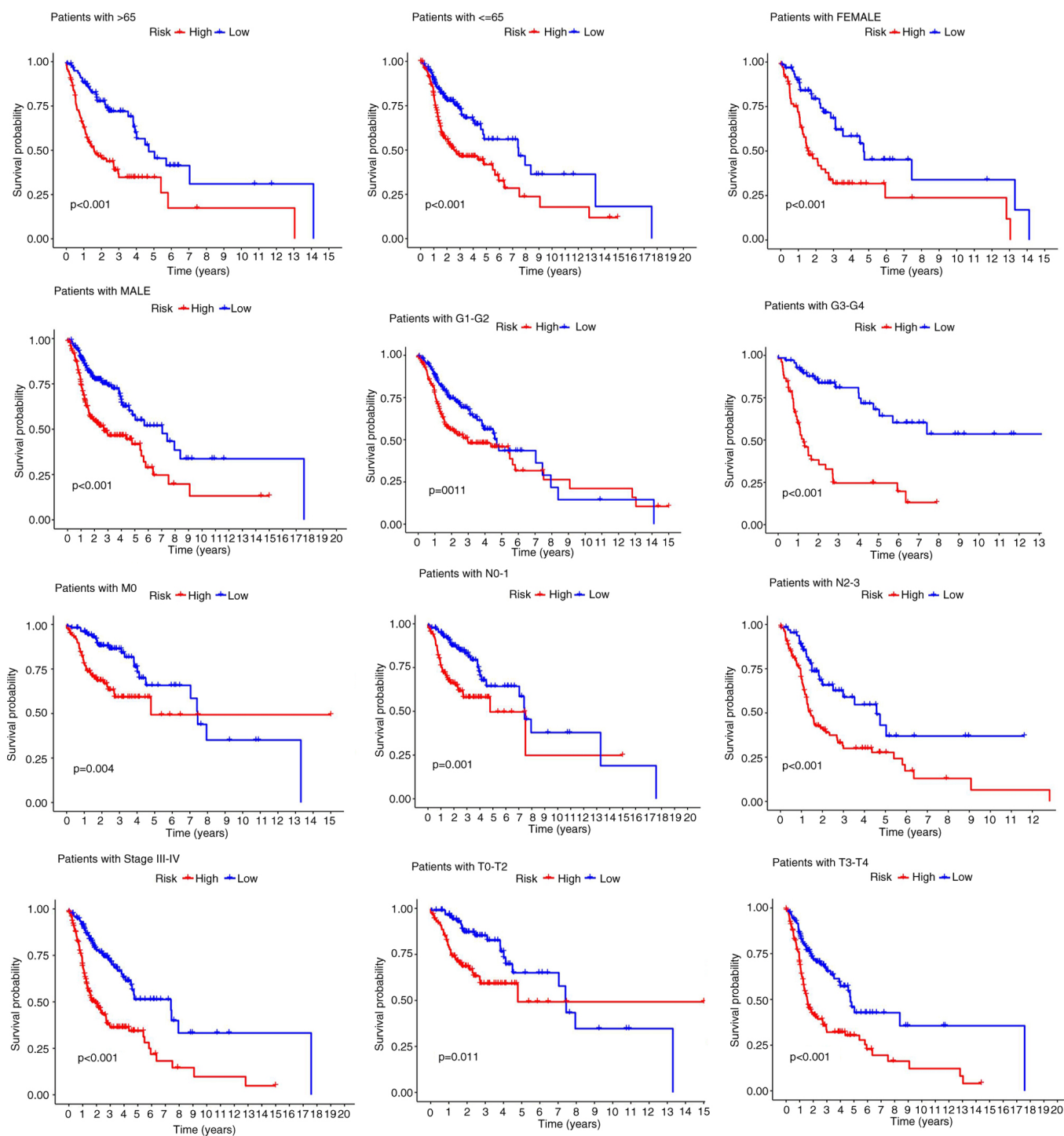


Figure S3. Kaplan-Meier plot of the total survival time of head and neck squamous cell carcinoma samples from the Kaplan-Meier plotter tool.

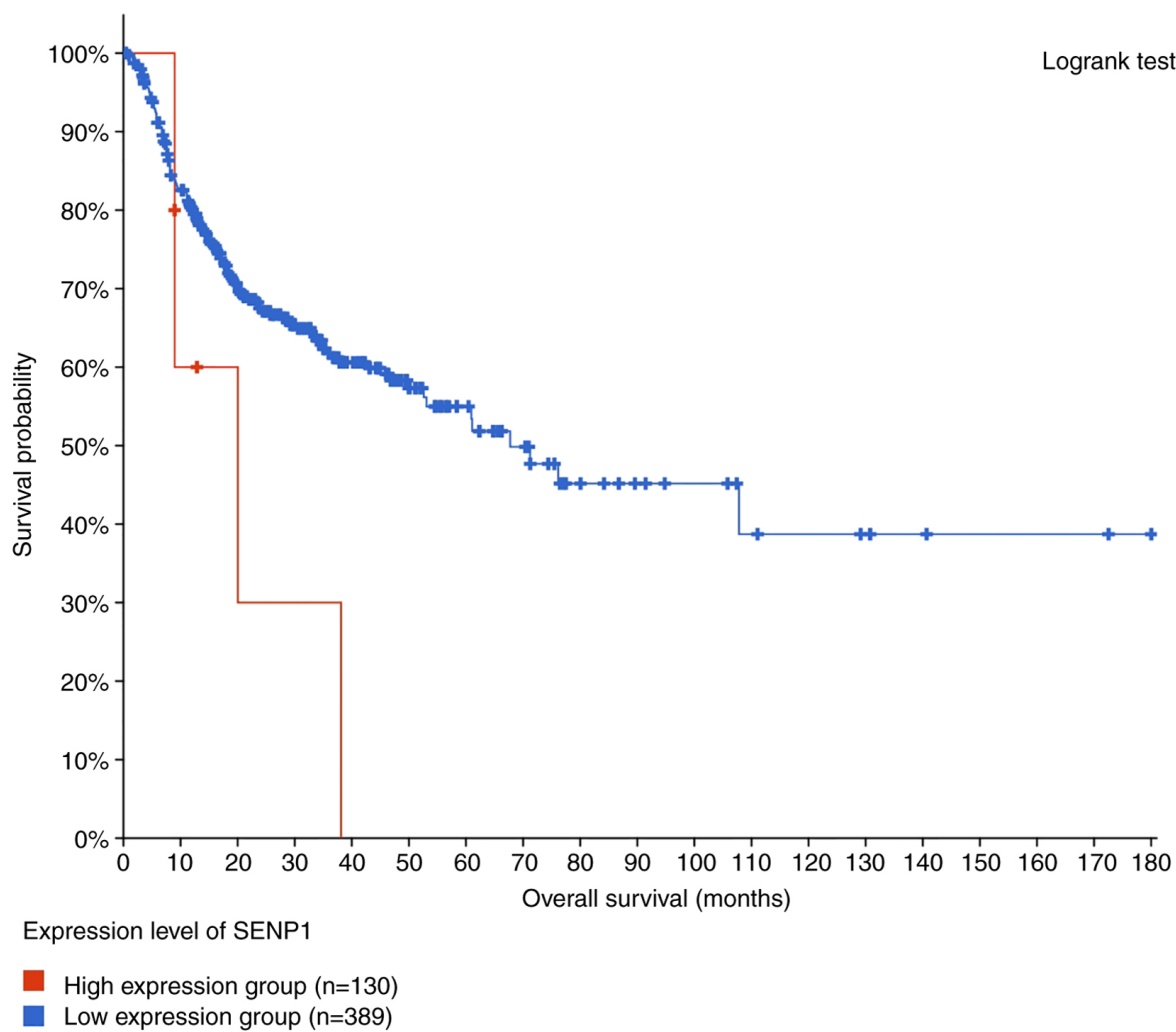


Figure S4. Flow chart for bioinformatics analysis of ferroptosis-related genes in HNSCC. TCGA, The Cancer Genome Atlas; HNSCC, head and neck squamous cell carcinoma; LASSO, least absolute shrinkage and selection operator; DEGs, differentially expressed genes; SENP1, SUMO-specific peptidase 1.

