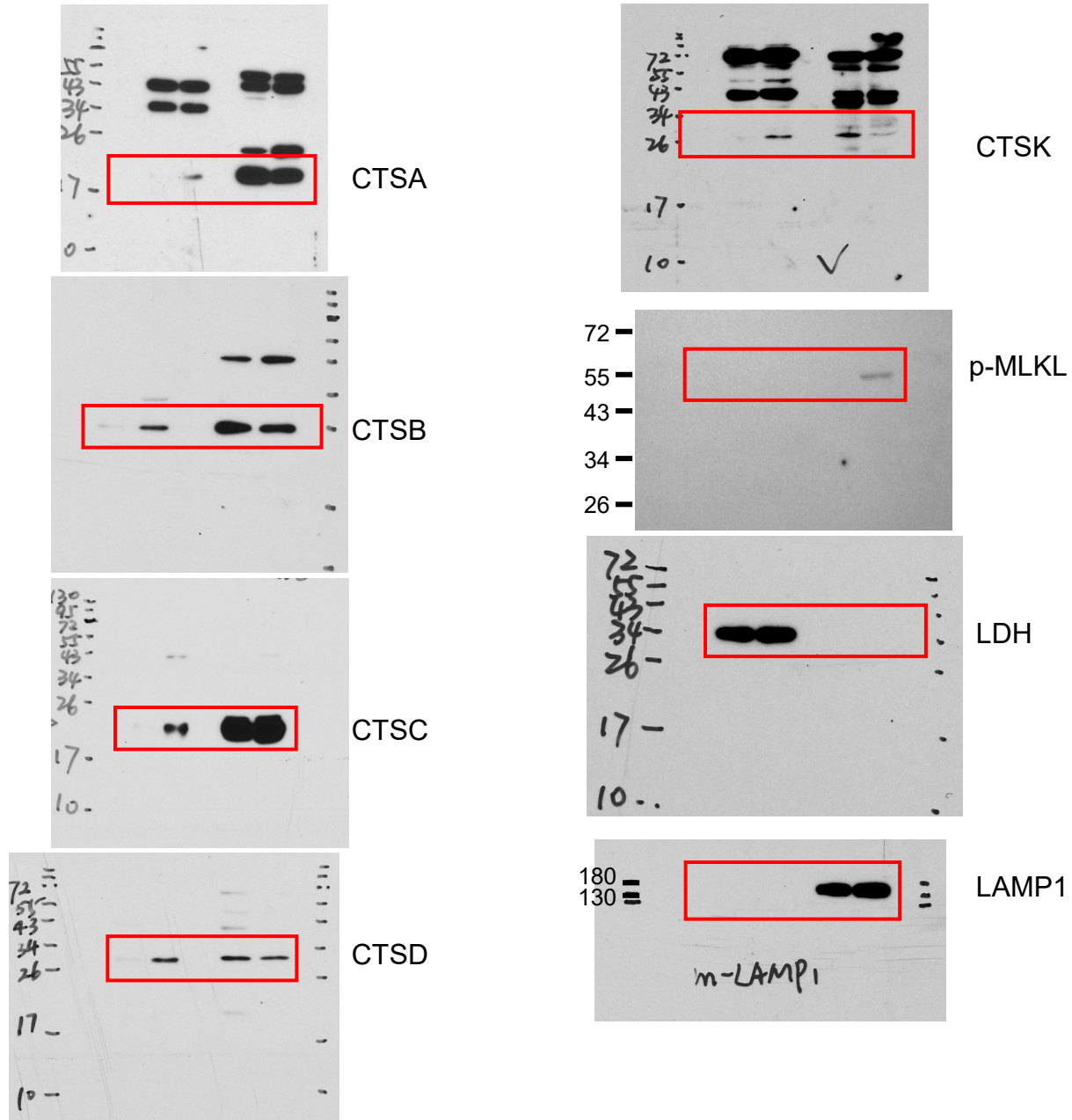


**MLKL polymerization-induced lysosomal membrane
permeabilization promotes necroptosis**

Supplemental Material – Original Blots

Relevant areas for cropped blots in the main and
Extended Data figures are shown with red boxes.

Supplemental Material to Fig. 1d (original blots)



Supplemental Material to Fig. 2 (original blots)

Fig. 2b

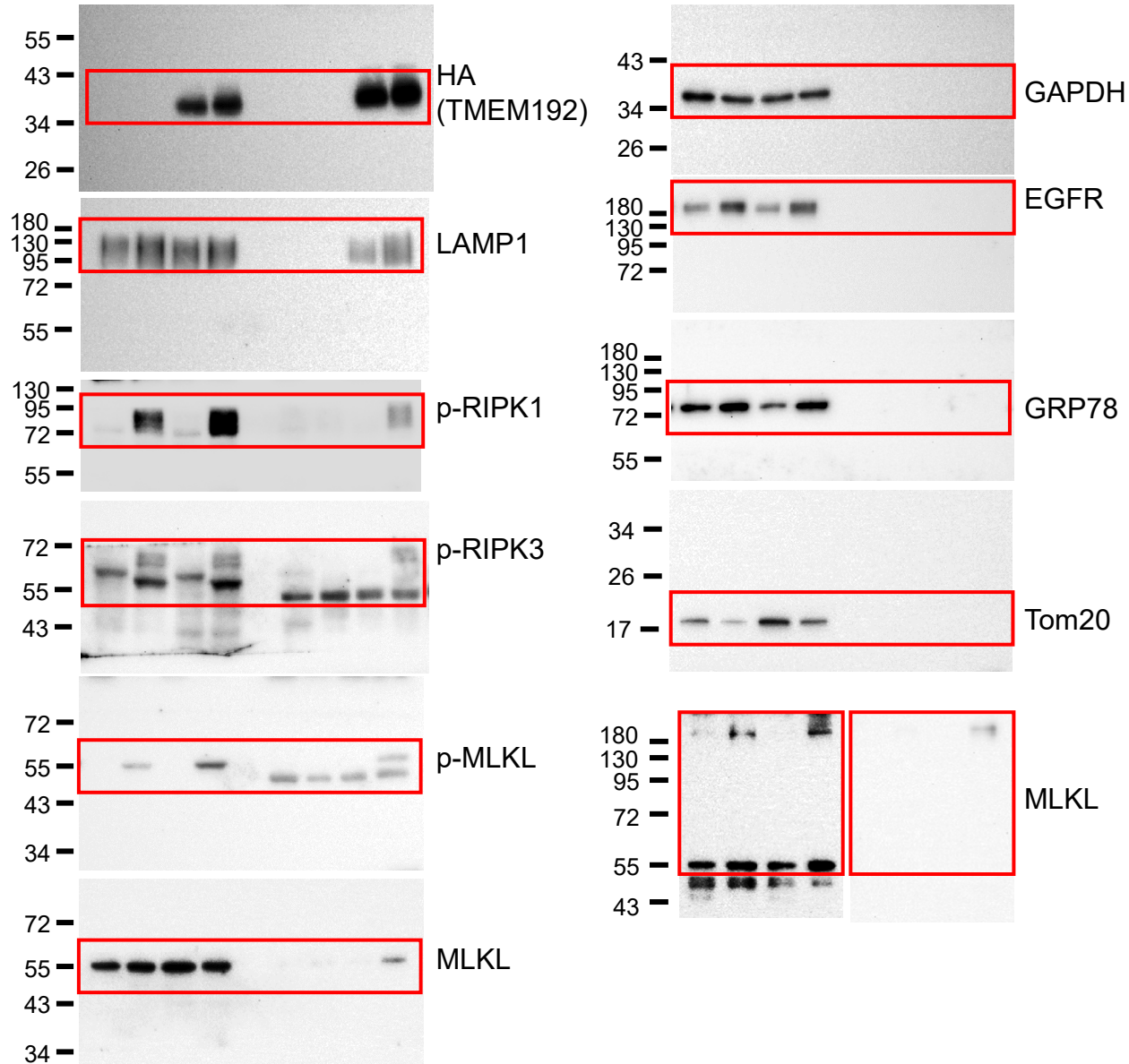
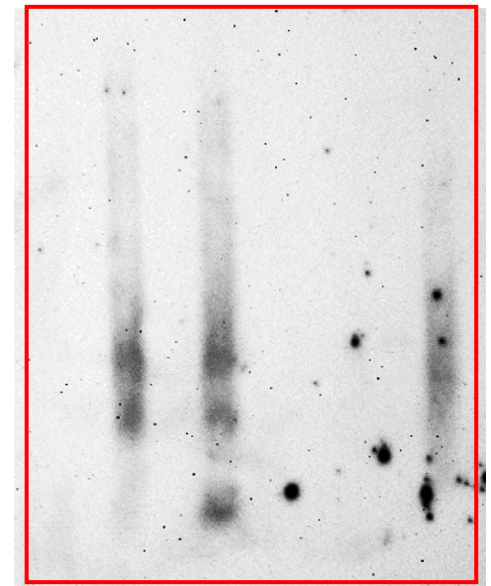


Fig. 2c



Supplemental Material to Fig. 3 (original blots)

Fig. 3a

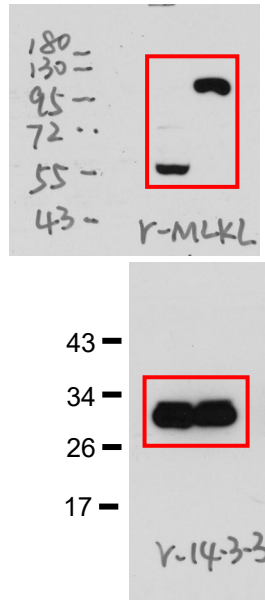
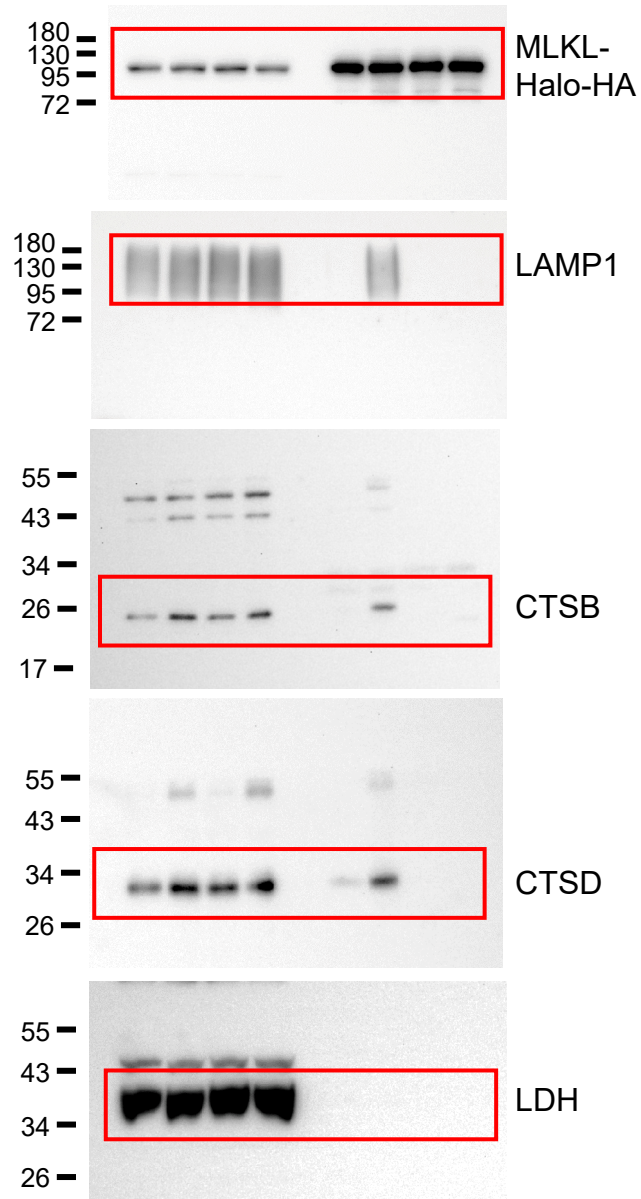


Fig. 3f



Supplemental Material to Fig. 4 (original blots)

Fig.4b

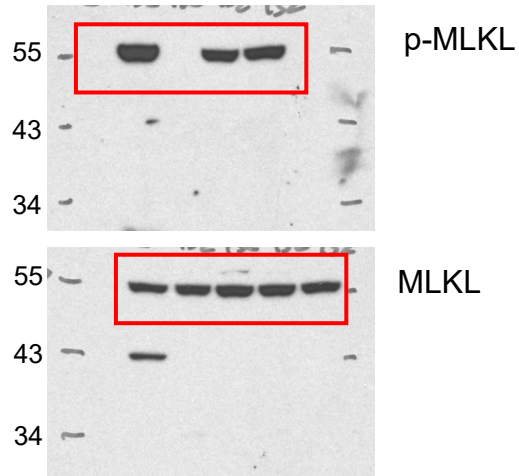


Fig.4c

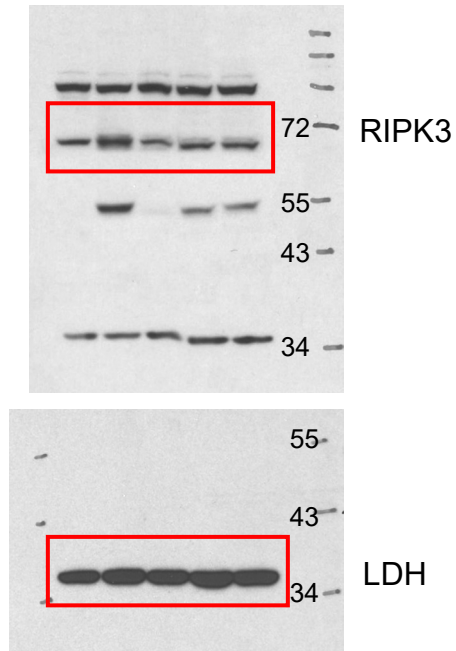
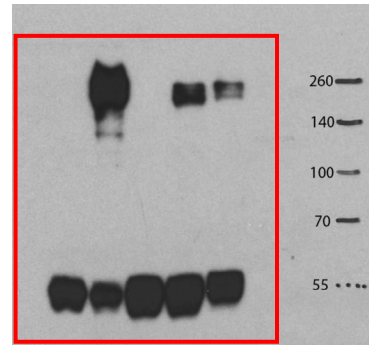
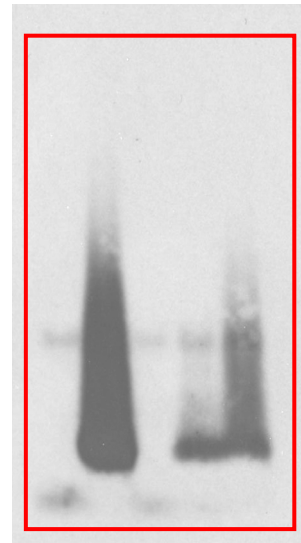


Fig.4d



Supplemental Material to Fig. 4 (original blots)

Fig.4e

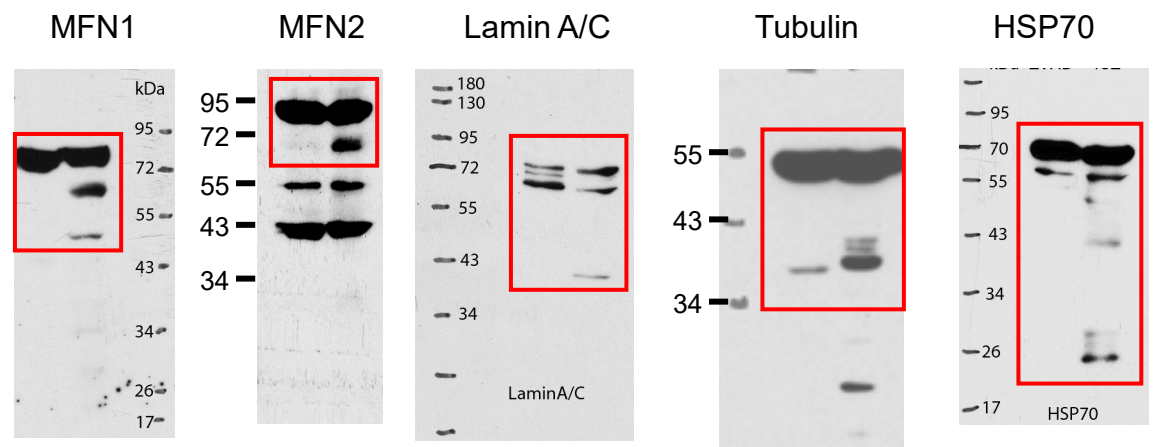
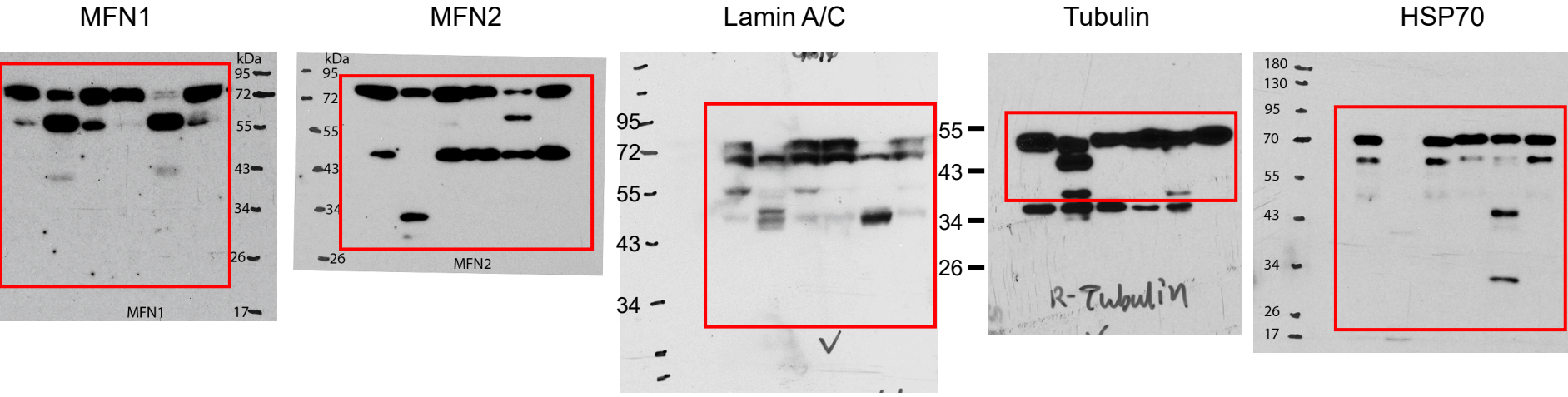


Fig.4f



Supplemental Material to Fig. 5 (original blots)

Fig.5a

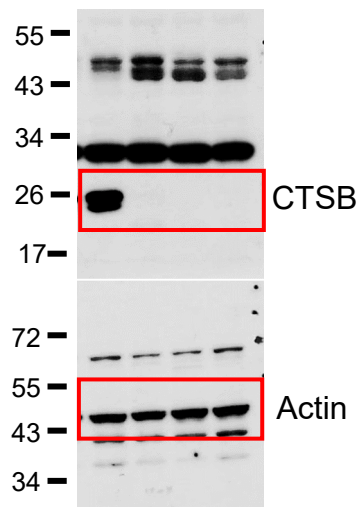


Fig.5c

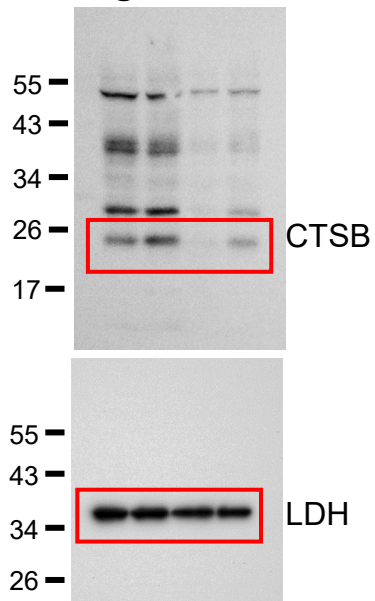


Fig.5d

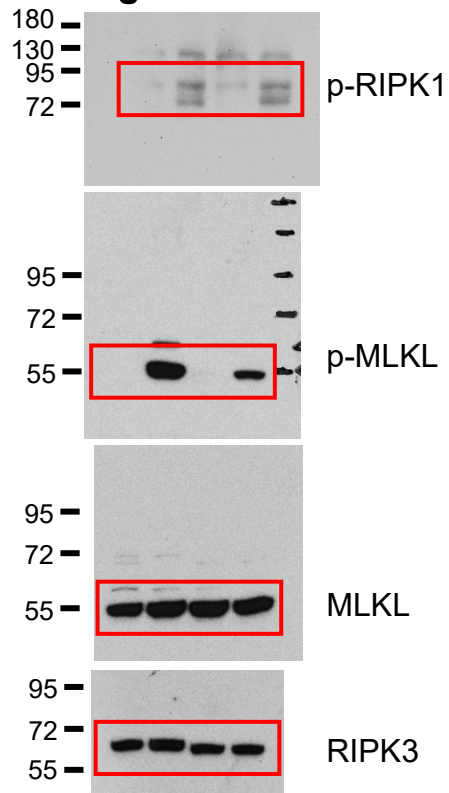


Fig.5e

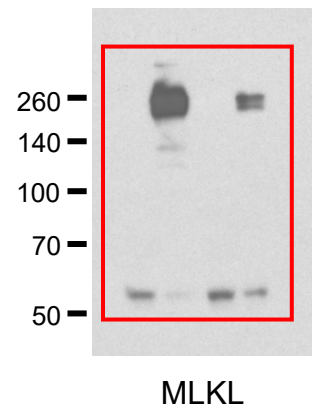


Fig.5f

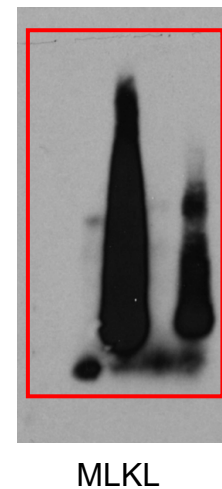
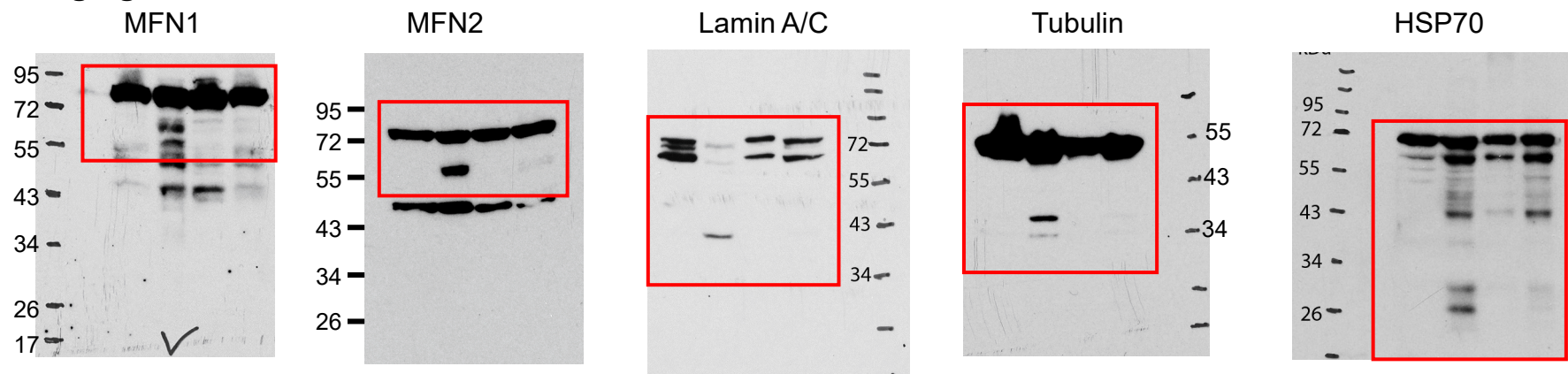


Fig.5g



Supplemental Material to Fig. 6 (original blots)

Fig.6c

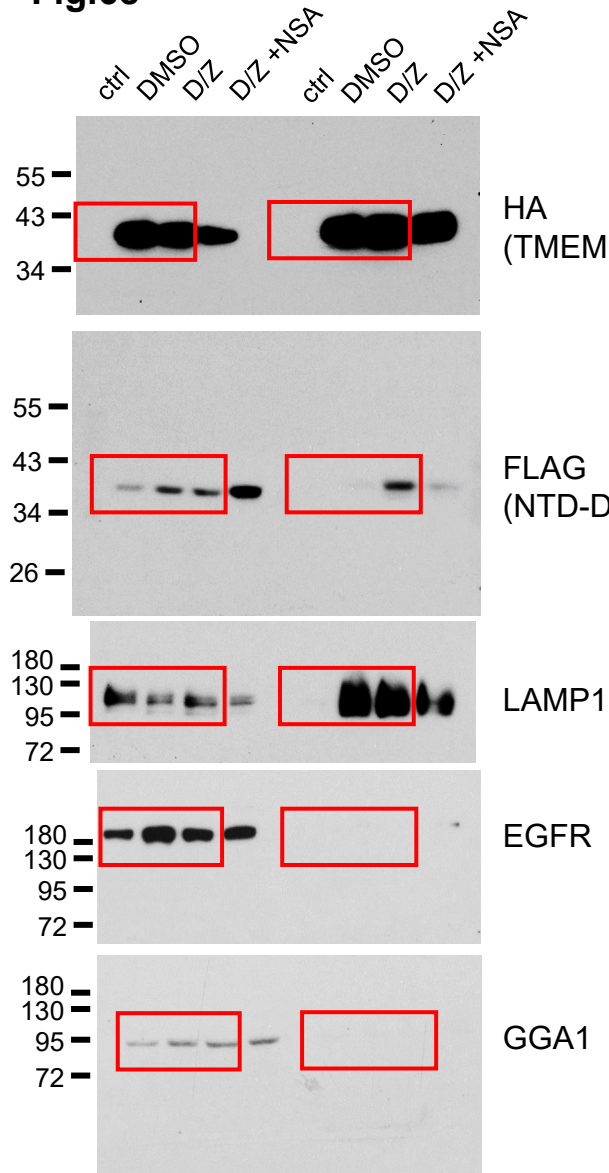


Fig.6d

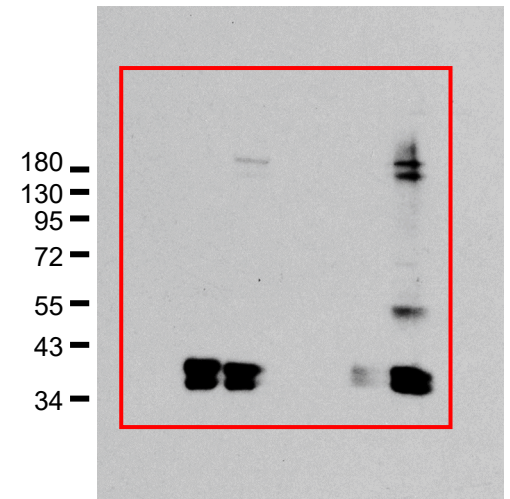
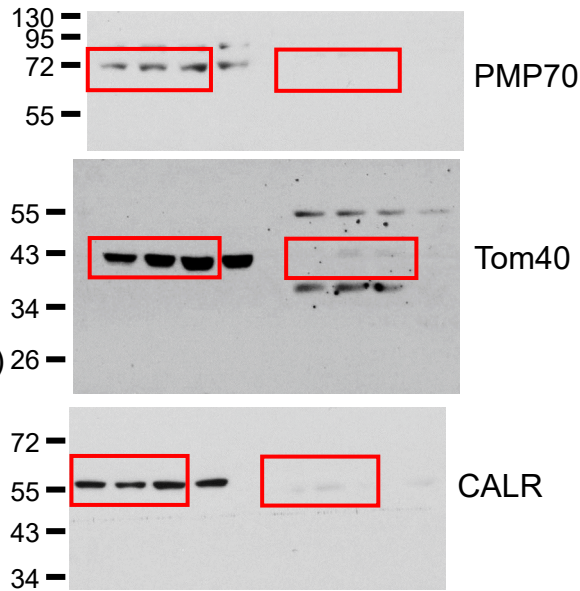
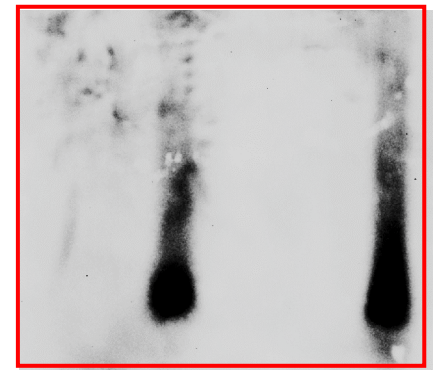


Fig.6e



Supplemental Material to Fig. 7 (original blots)

Fig.7d

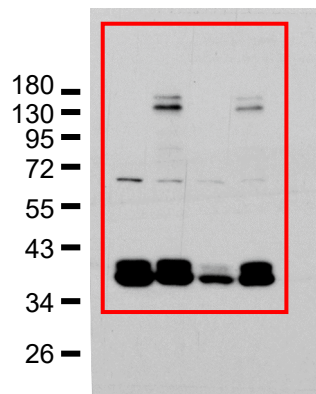


Fig.7e

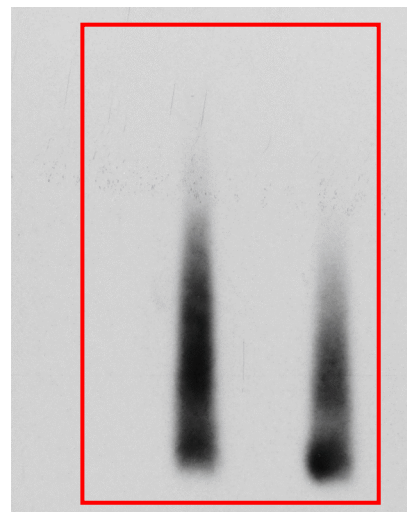
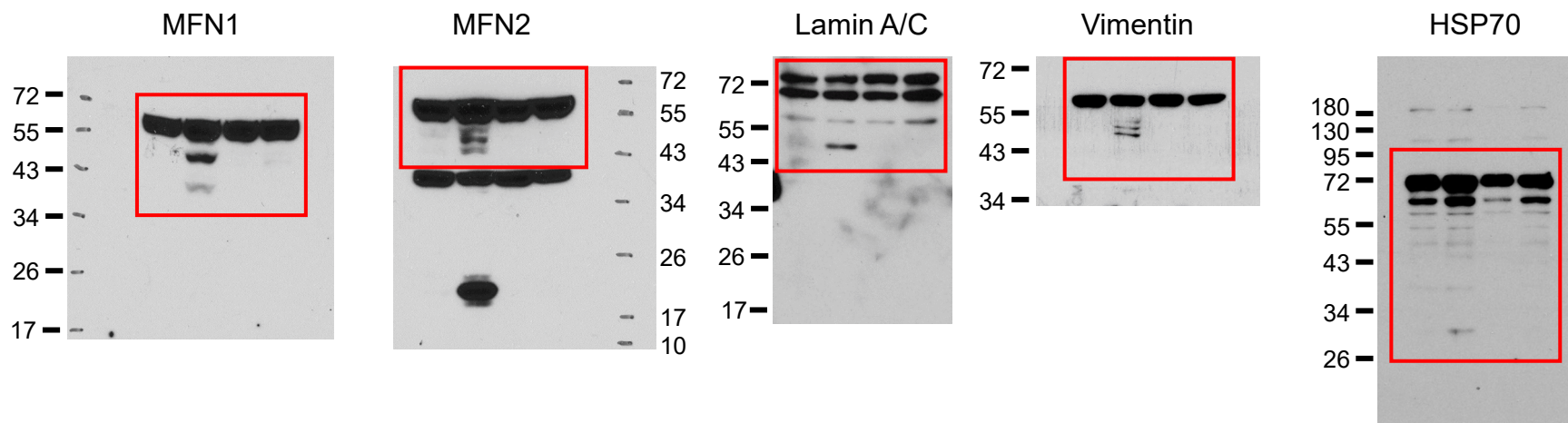


Fig.7f



Supplemental Material to Supplemental Fig.1 (original blots) Fig.S1c

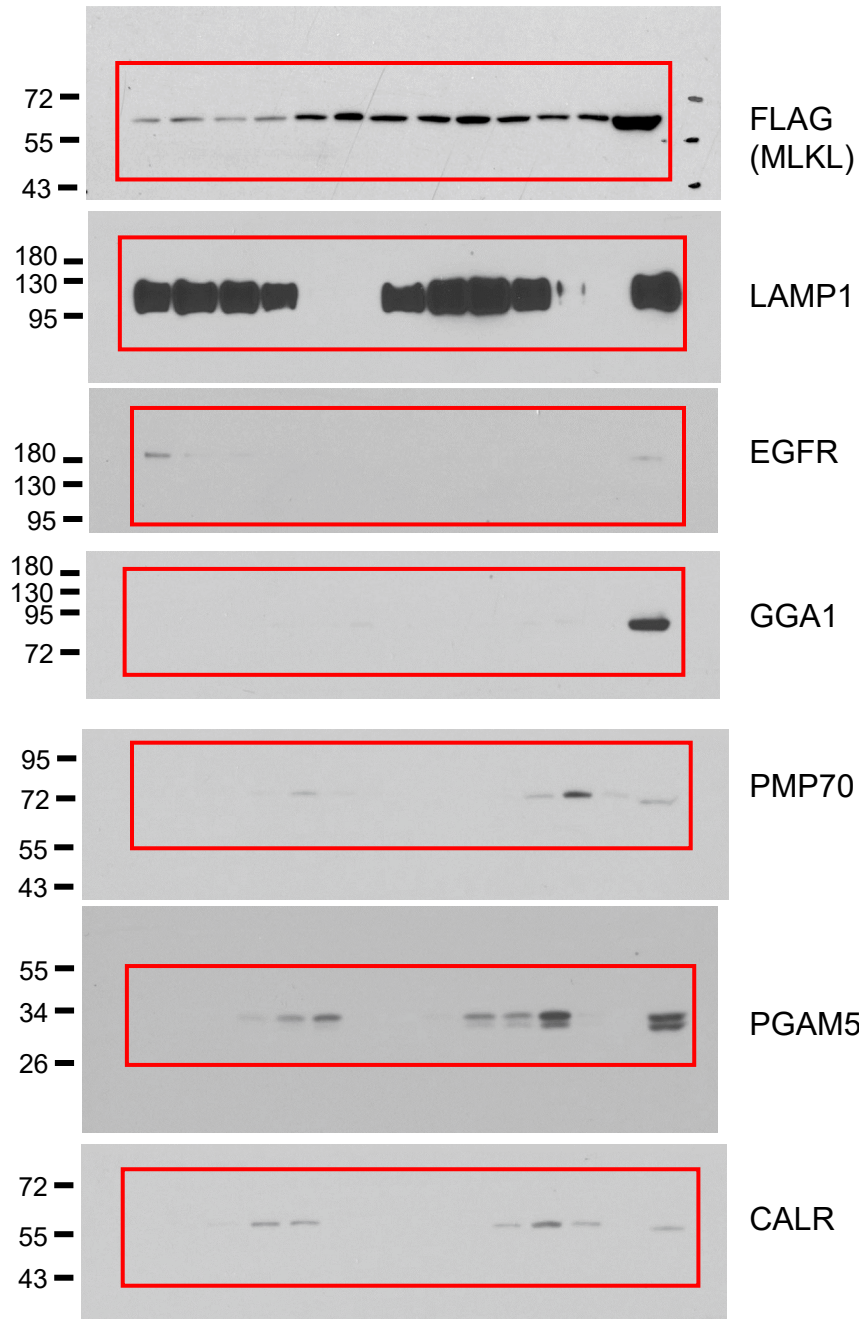


Fig.S1d

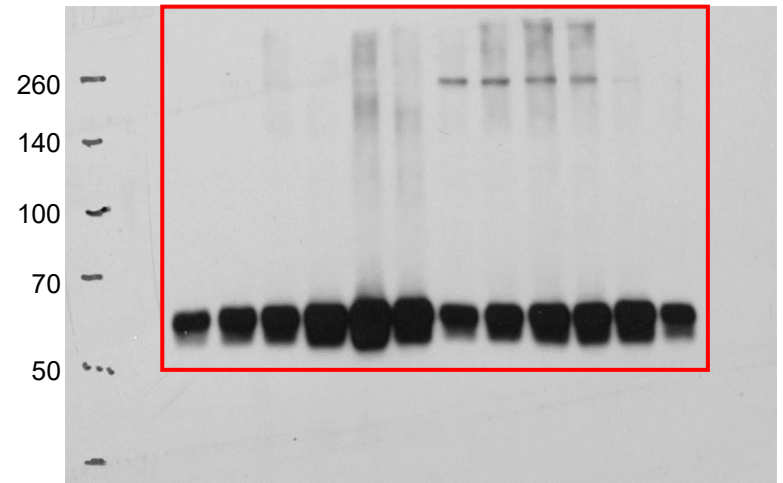
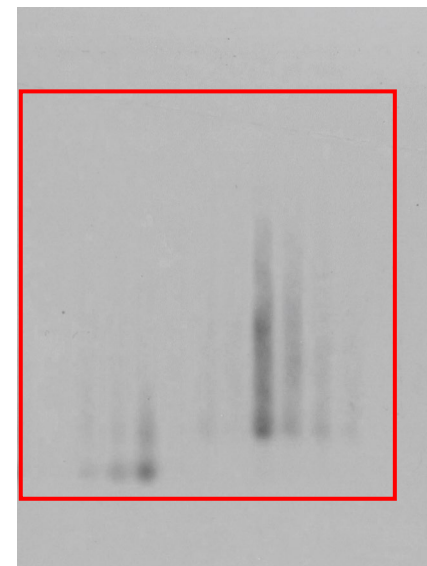
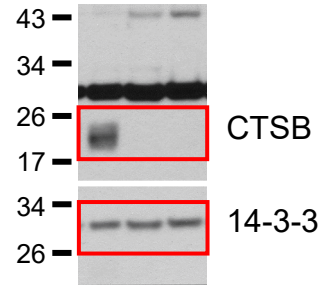


Fig.S1e



Supplemental Material to Supplemental Fig.3b (original blots)



Supplemental Material to Supplemental Fig. 4 (original blots)

Fig.S4b

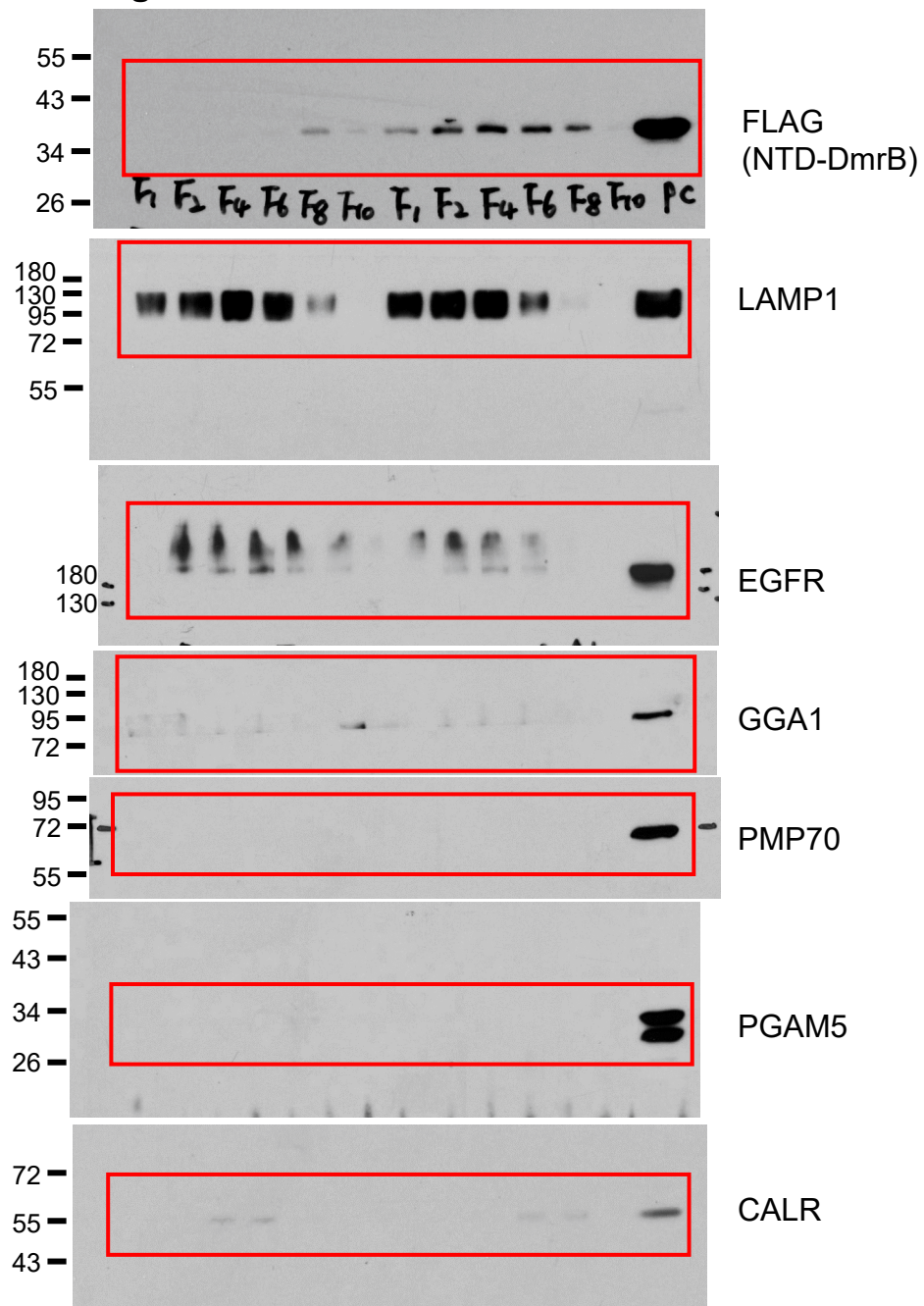


Fig.S4c

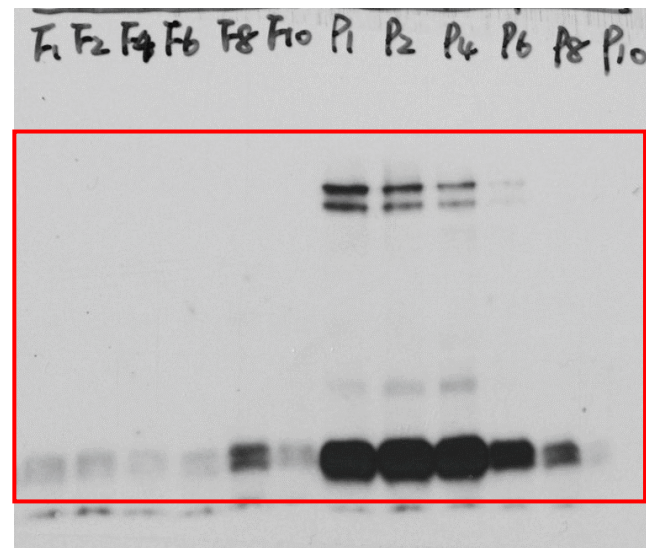


Fig.S4d

