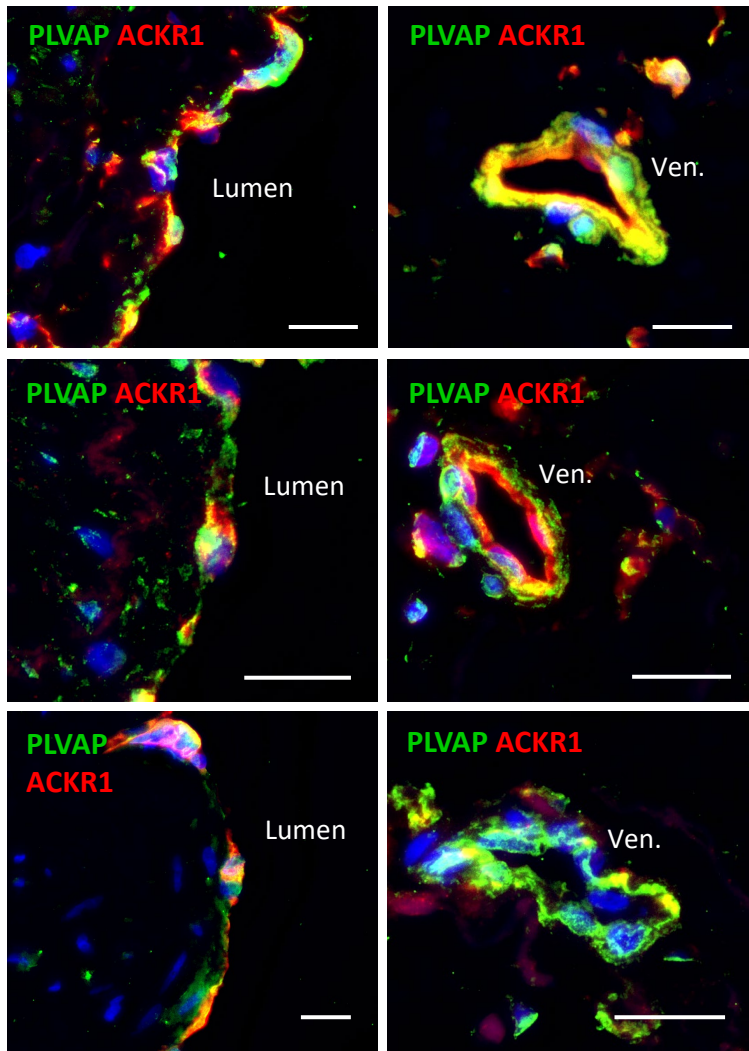
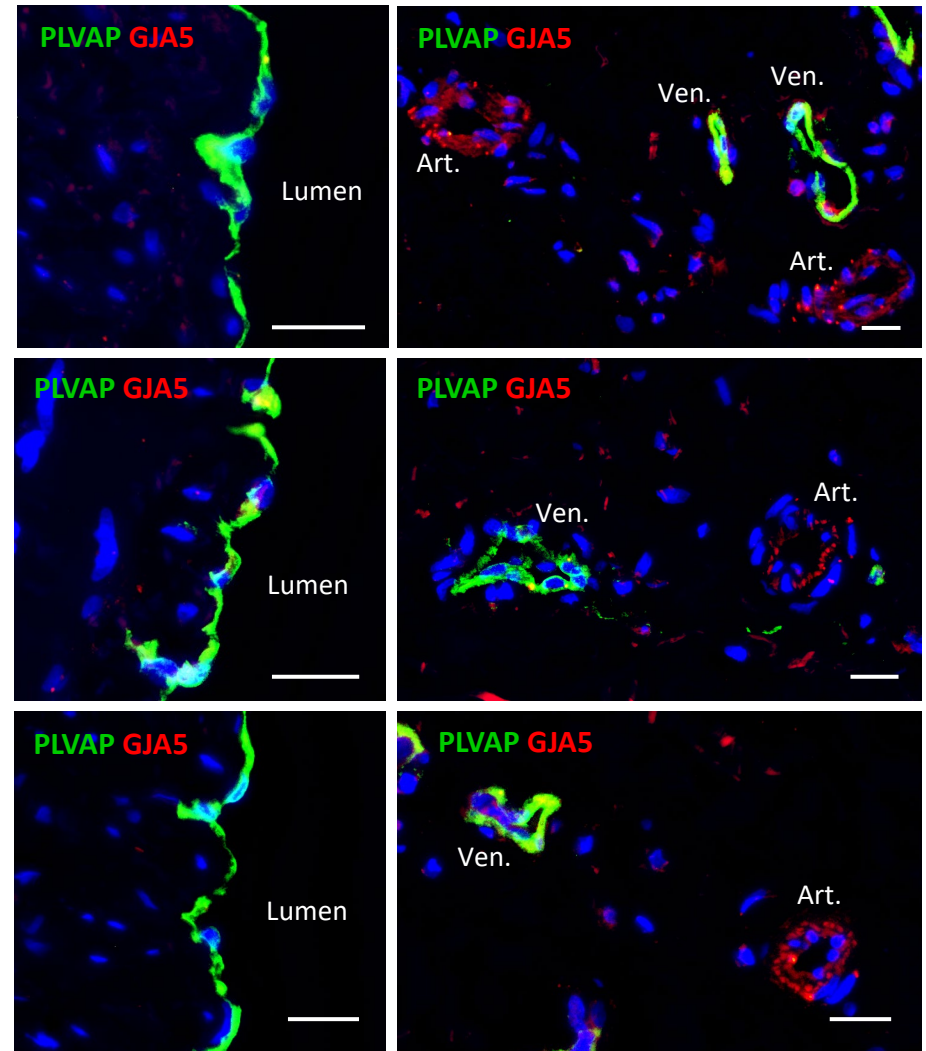


**A****B**

**S4 Fig. Venous endothelial cells in the lumen and vasa vasorum.** **A)** Representative co-immunofluorescence of the venous EC markers PLVAP and ACKR1 in the main lumen (left) and venous vasa vasorum (right). The yellow color indicates colocalization of both markers in the lumen and venules. **B)** Co-immunofluorescence of PLVAP and GJA5 in the main lumen (left) and vasa vasorum (right). There is low protein expression of GJA5 in the lumen and venules, while localization of GJA5 and PLVAP discriminates between arterioles (Art.) and venules (Ven.) in the vasa vasorum. Scale bars represent 20  $\mu$ m in all panels.