

Supplemental Digital Content

Title: Point-of-care Echocardiography in the Difficult-to-Image Patient in the Intensive Care Unit

Authors: John C. Grotberg, MD¹, Rachel K. McDonald, MD¹ and Ivan N. Co, MD²

1. Division of Pulmonary and Critical Care Medicine, Department of Medicine, Washington University School of Medicine, Saint Louis, Missouri, USA

2. Division of Pulmonary and Critical Care Medicine, Department of Medicine, University of Michigan, Ann Arbor, Michigan, USA

Corresponding Author: John C. Grotberg, 660 S. Euclid Avenue, Saint Louis, Missouri, USA, 63110. grotberg@wustl.edu. Tel: 314-265-1782, Fax: 314-454-5571

Funding: NHLBI T32 HL007317 (JCG)

COI: There are no conflicts of interest for JCG, RKM or INC.

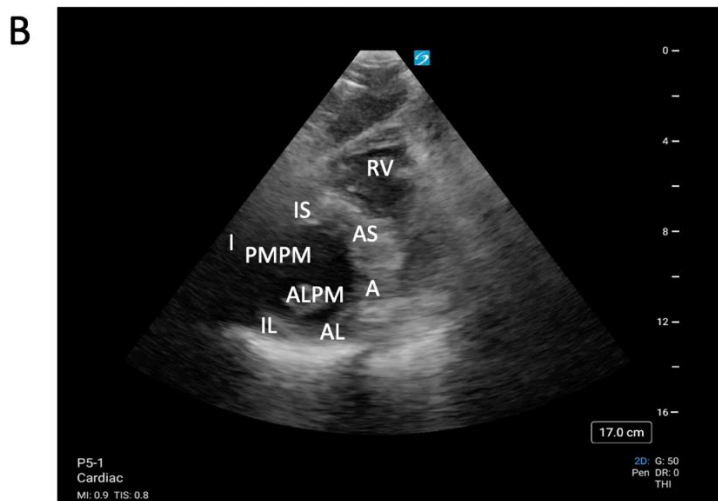
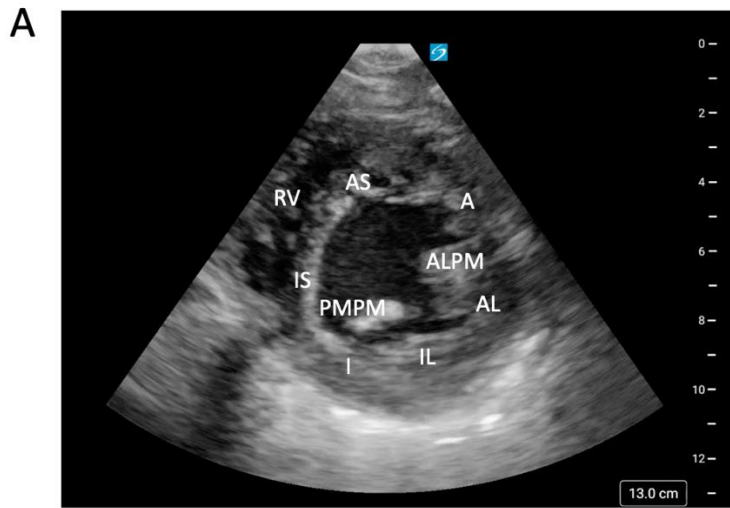
Authorship contributions: All authors participated in the manuscript development. JCG drafted the manuscript, which was critically reviewed by RKM and INC. All authors approved of the final manuscript.

Key Words: Critical Care; Transesophageal Echocardiography; Transthoracic Echocardiography; hemodynamics; ultrasound

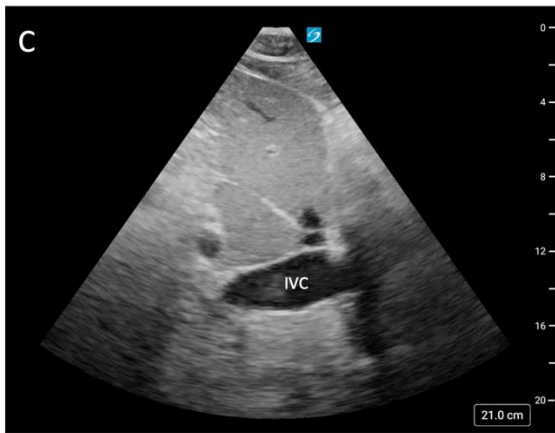
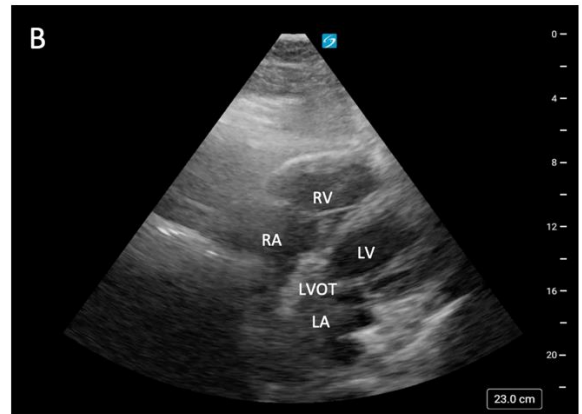
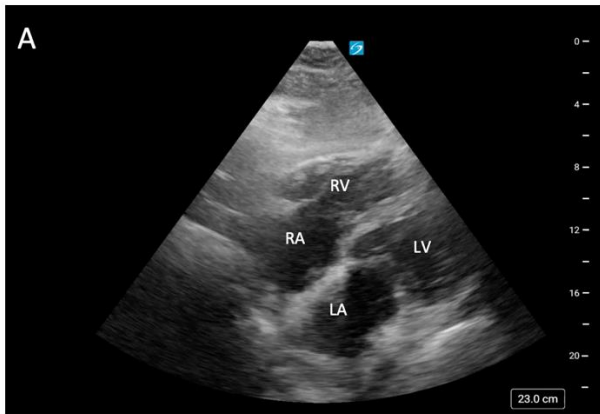
Table of Contents

eFigure 1.....3

eFigure 2.....4



eFigure 1: POCUS images displaying A) subcostal 4-chamber view, B) subcostal 5-chamber view, C) subcostal sagittal plane IVC view. *Abbreviations*: RA = right atrium, RV = right ventricle, LA = left atrium, LV = left ventricle, LVOT = left ventricular outflow tract, IVC = inferior vena cava.



eFigure2: POCUSE images displaying A) parasternal short axis view, B) subcostal short axis view.

Abbreviations: A = anterior, AS = anteroseptal, IS = inferoseptal, I = inferior, IL = inferolateral, AL = anterolateral, PMPM = posteromedial papillary muscle, ALPM = anterolateral papillary muscle, RV = right ventricle.