

**Precision cardiac targeting: empowering curcumin therapy through  
smart exosome-mediated drug delivery in myocardial infarction**

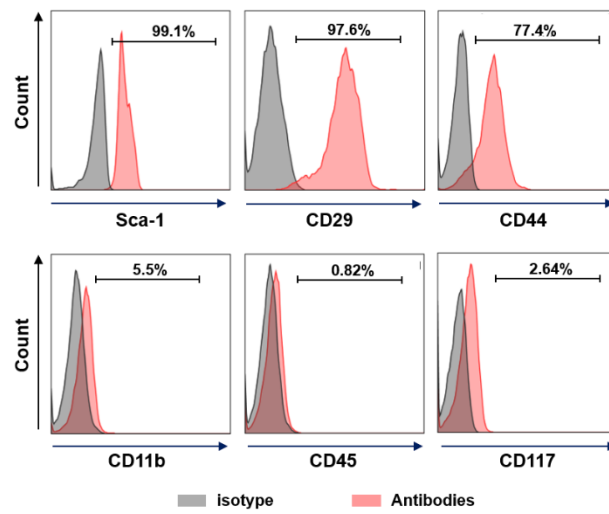
Ming Chen<sup>1, #</sup>, Shengnan Wang<sup>1, #</sup>, Yihuan Chen<sup>1, #</sup>, Han Shen<sup>1</sup>, Lei Chen<sup>1</sup>, Liang Ding<sup>1</sup>,  
Qingsong Tang<sup>1</sup>, Ziyang Yang<sup>1</sup>, Weiqian Chen<sup>1, \*</sup>, Zhenya Shen<sup>1, \*</sup>

<sup>1</sup>Department of Cardiovascular Surgery of the First Affiliated Hospital & Institute for Cardiovascular Science, Medical College, Soochow University, Suzhou 215006, China.

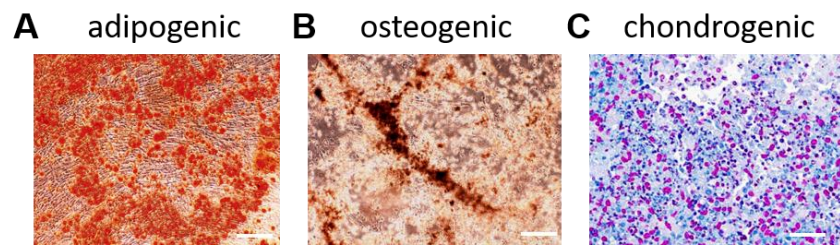
# These authors contributed equally to this paper

Corresponding authors: Zhenya Shen (uuzyshen@aliyun.com) and Weiqian Chen (chenweiqian@suda.edu.cn)

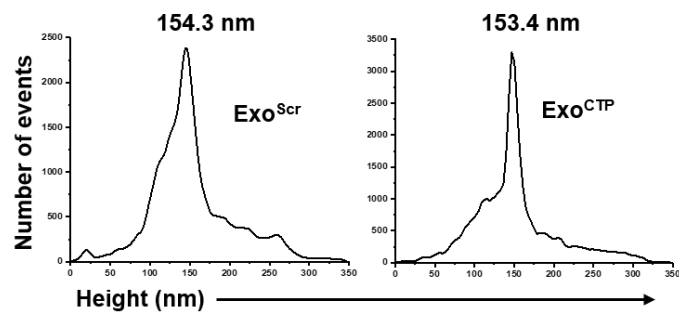
## Supplementary Materials



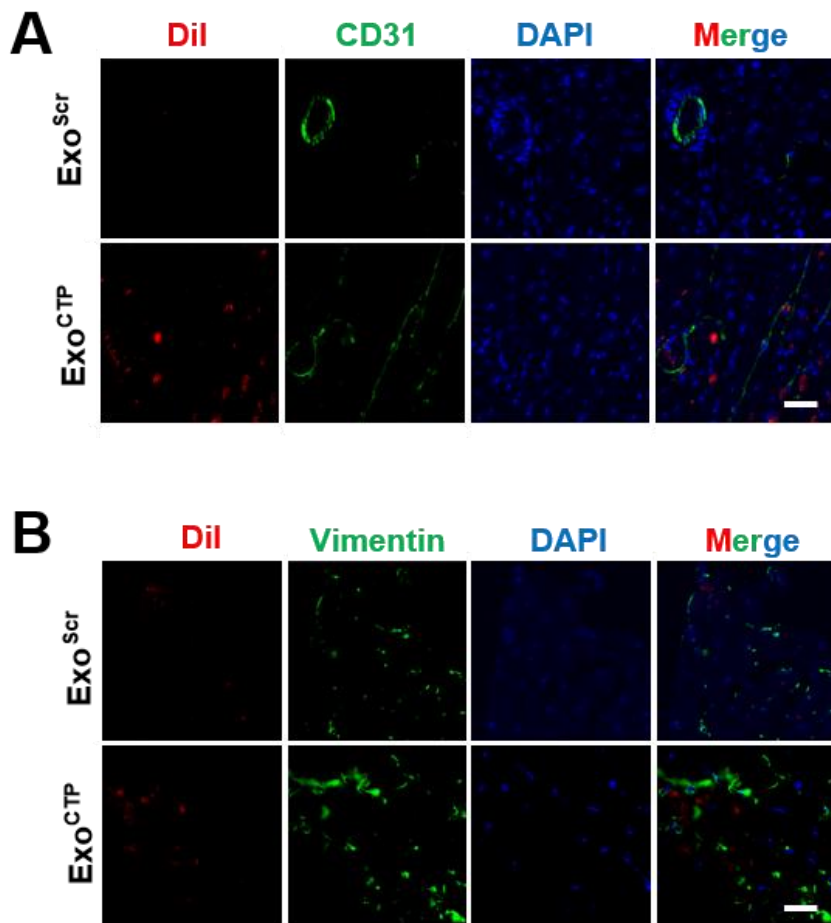
**Figure S1** Expression pattern characterization for MSC surface markers, including Sca-1, CD29, CD44, CD11b, CD45, and CD117.



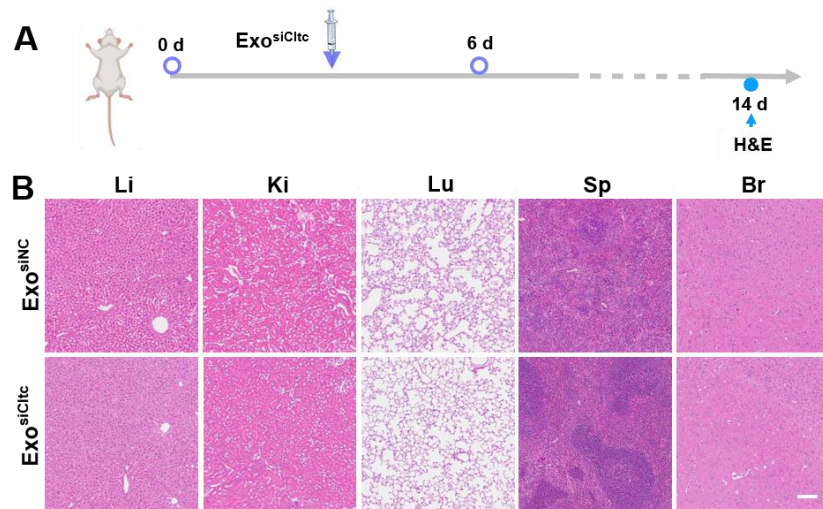
**Figure S2** Representative photographs of adipogenesis (A), osteogenesis (B), and chondrogenesis (C) of MSCs. Scale bar, A, 200  $\mu\text{m}$ ; B, 200  $\mu\text{m}$ ; C, 50  $\mu\text{m}$ .



**Figure S3** Particle height distribution measured by atomic force microscopy (AFM).



**Figure S4** Representative heart section images of Dil-labeled Exo<sup>Scr</sup> or Exo<sup>CTP</sup> taken up by CD31<sup>+</sup> endothelial cells (A) and Vimentin<sup>+</sup> fibroblasts (B). Scale bar, 50  $\mu$ m.



**Figure S5** Safety verification of Exo<sup>siCltc</sup>. (A&B) H&E staining of vital organs after indicated treatments. Scale bar, 100  $\mu$ m. Li, liver; Ki, kidney; Lu, lung; Sp, spleen; Br, brain.