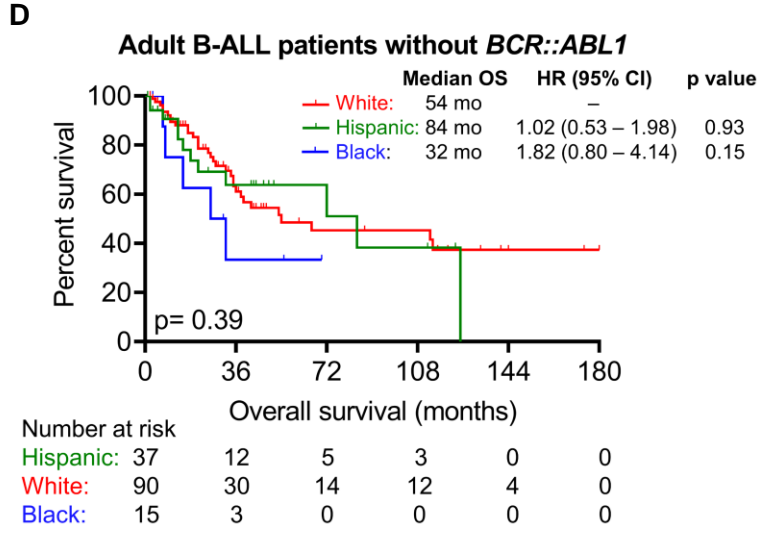
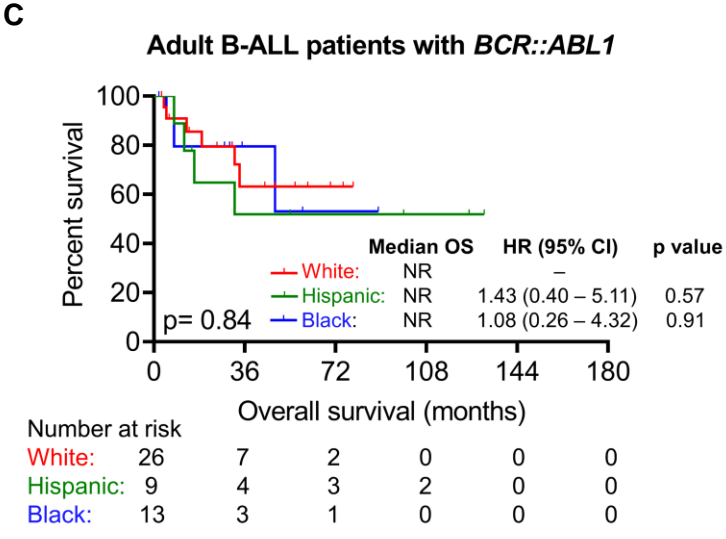
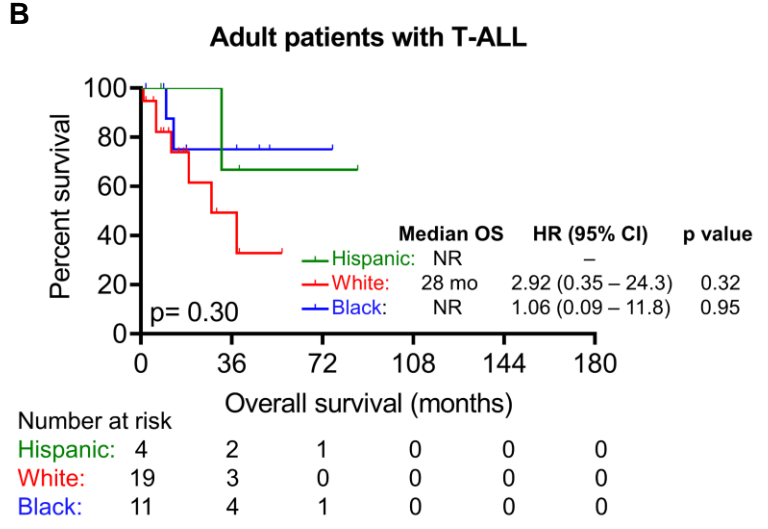
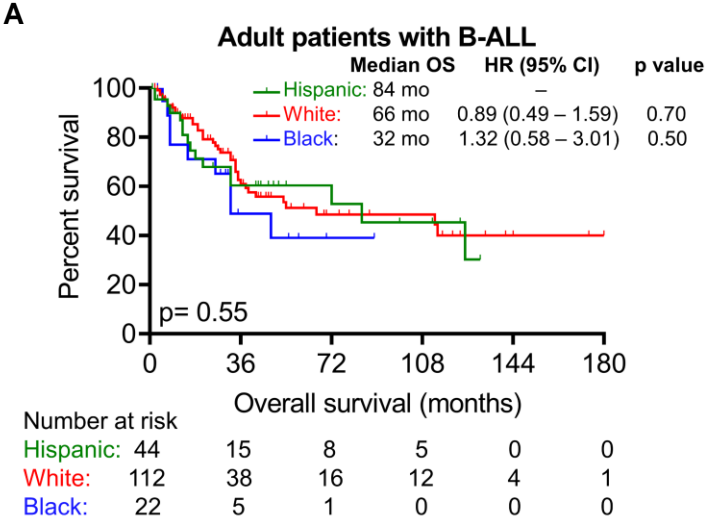
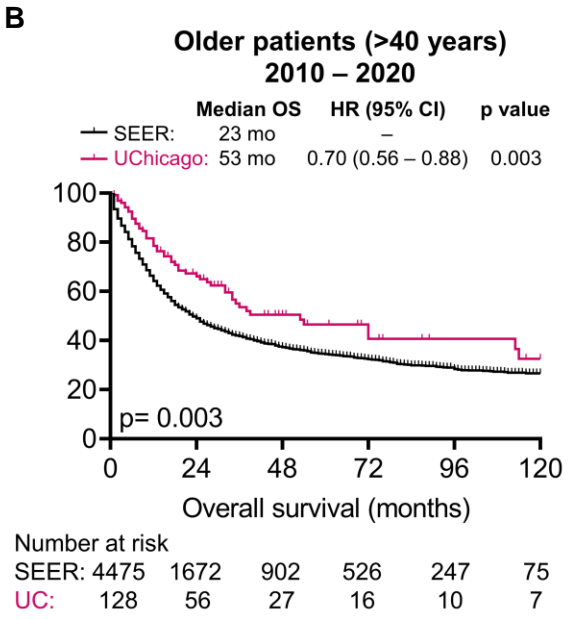
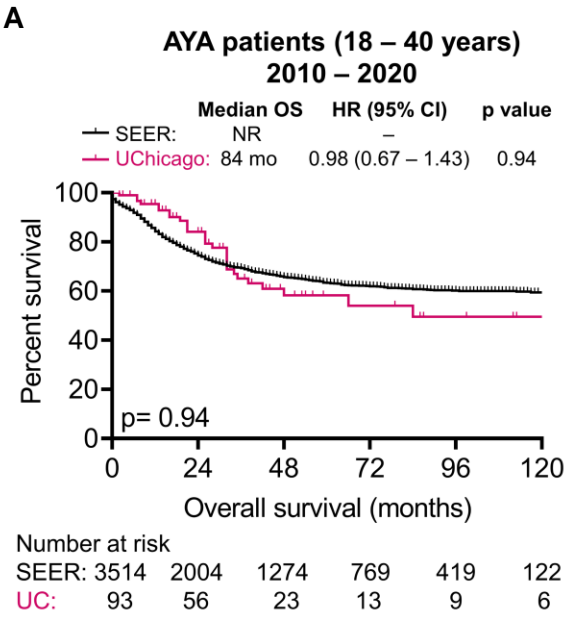


**Supplementary Figure 1**



**Supplementary Figure 2**



**Supplementary Table 1**

**UChicago B-ALL patients (n= 178)**

	<b>N</b>	<b>NHW (n= 112)</b>	<b>Hispanic (n= 44)</b>	<b>NHB (n= 22)</b>
<b>Inotuzumab</b>	37	23 (20.5)	10 (22.7)	4 (18.1)
<b>Blinatumomab</b>	36	25 (22.3)	9 (20.4)	2 (9)
<b>Cellular therapy</b>	42	27 (24.1)	12 (27.2)	3 (7.1)