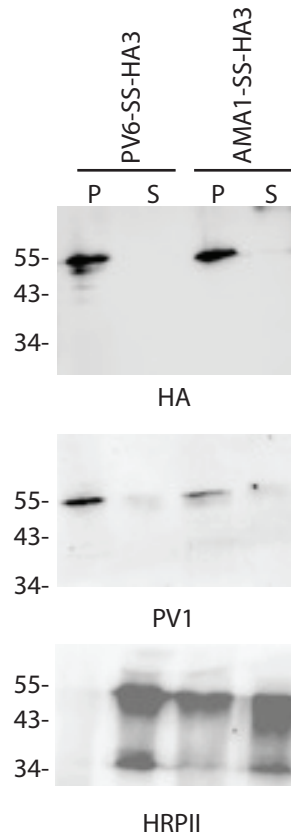


Supplementary Figure 3



Supplementary Figure 3. Differential lysis of AMA1-SS-HA3-PV6 and PV6-HA3-PV6 infected erythrocytes with Streptolysin O (SLO). Infected erythrocytes (35-40 hours post-invasion) were treated with SLO, the erythrocytes were pelleted and the supernatant and pellet were collected. Samples were prepared for immunoblotting and probed with the indicated antibodies. Note the similarity in the release of AMA1-SS-HA3-PV6, PV6-HA3-PV6 and the parasitophorous vacuole marker PV1 in the samples.