

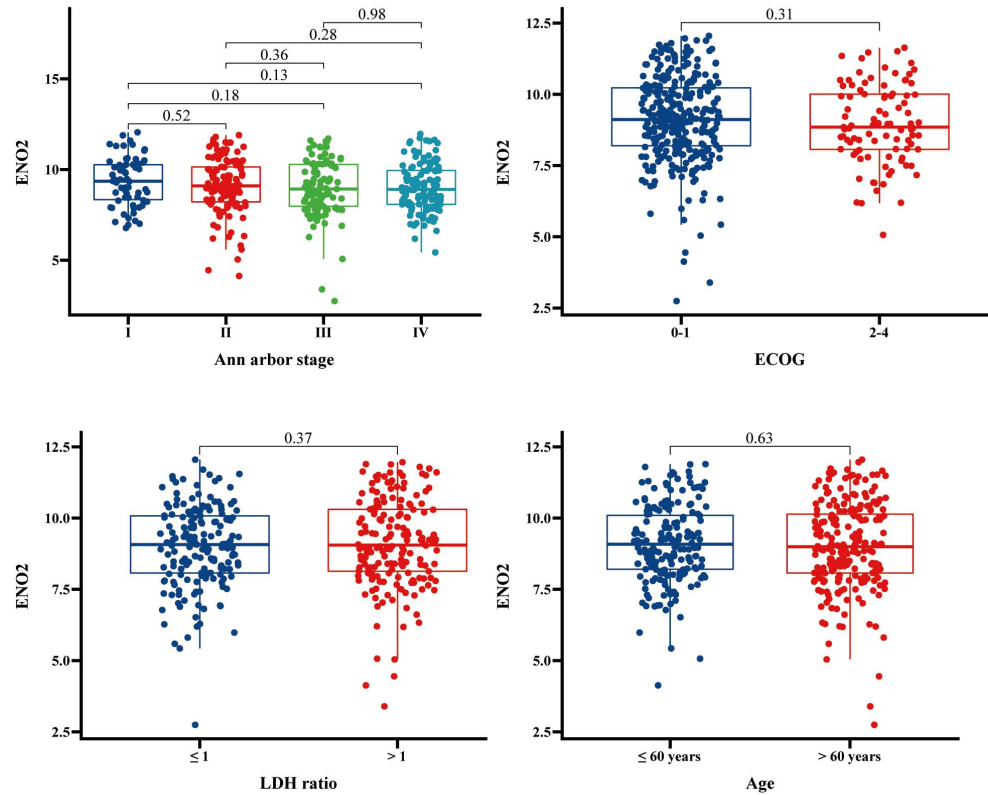
**Table S1.** qRT-PCR primers for *IL-10*, *TGF- $\beta$* , *IL-12p40*, *TNF- $\alpha$*  and *GAPDH*.

<i>IL-10</i>	Forward Primer	GACTTTAAGGGTTACCTGGGTTG
	Reverse Primer	TCACATGCGCCT-TGATGTCTG
<i>TGF-<math>\beta</math></i>	Forward Primer	TACCTGAACCCGTGTTGCTCTC
	Reverse Primer	G-TTGCTGAGGTATCGCCAGGAA
<i>IL-12p40</i>	Forward Primer	CTCTGGCAAACCCTGACC
	Reverse Primer	GCTTAGAACCTCGCCTCCTT
<i>TNF-<math>\alpha</math></i>	Forward Primer	AGGCGGTGCTTGTTTCCTCAG
	Reverse Primer	GTTATCTCTCAGCTCCACGC
<i>GAPDH</i>	Forward Primer	AGGTCGGTGTGAACGGATTTG
	Reverse Primer	TGTAGACCATGTAGTTGAGGTCA

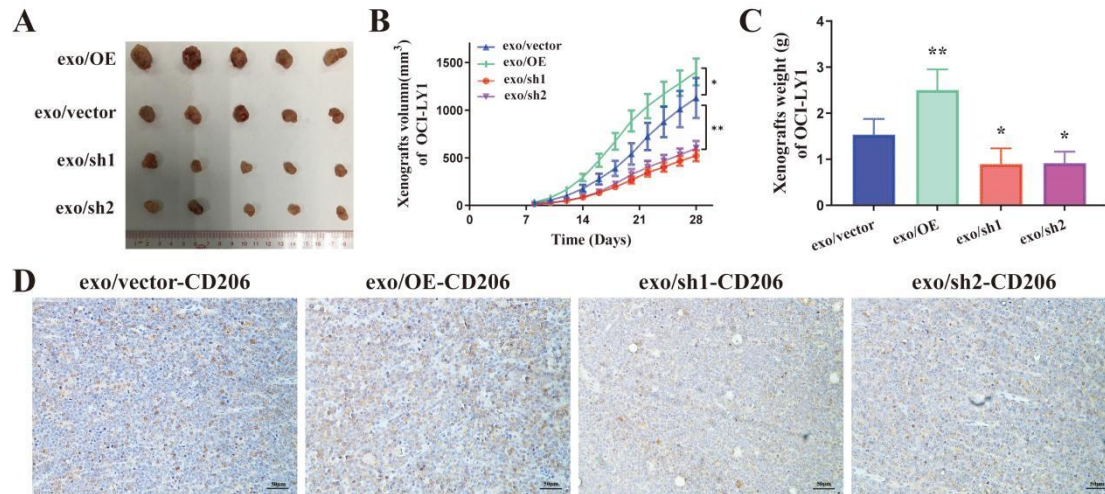
**Table S2.** Sequence of *ENO2* shRNAs.

<i>ENO2</i>	shRNA1	CCCACAGTGGAGGTGGATCTCTATA
	shRNA2	CAAGGGAGTCATCAAGGACAA

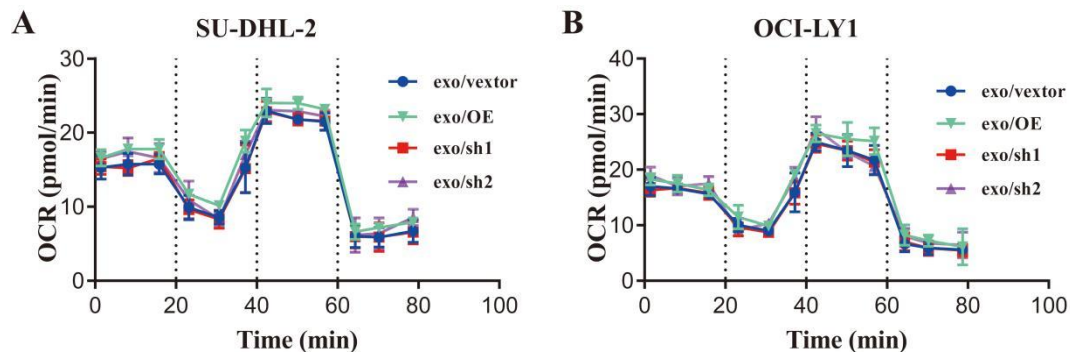
**Fig. S1.** Correlation of *ENO2* expression levels with stage, ECOG, LDH ratio and age in the GSE10846 cohort.



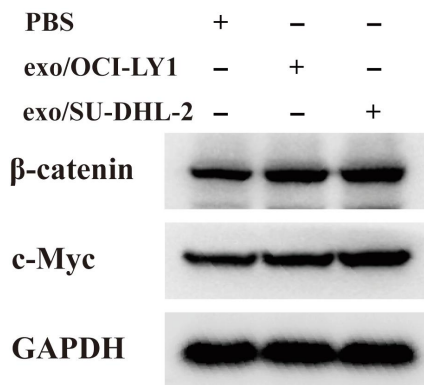
**Fig. S2. A.** Tumor volume of OCI-LY1-ENO2-sh1 xenograft. **B.** Growth speed of OCI-LY1-ENO2-sh1 xenograft. **C.** Tumor weight of OCI-LY1-ENO2-sh1 xenograft. **D.** IHC staining images (CD206) of OCI-LY1-ENO2-sh1 xenograft. Data were shown as the mean±SD. \* $p < 0.05$ , \*\* $p < 0.01$ , \*\*\* $p < 0.001$ .



**Fig. S3.** OCR of the THP-1 macrophages stimulated by exosomes from different ENO2 stably transfected DLBCL cells.



**Fig. S4.** The protein expression levels of  $\beta$ -catenin and c-Myc were detected in THP-1 macrophages stimulated by PBS or exosomes from DLBCL cells.



**Fig. S5.** The protein expression levels of nuclear translocation of  $\beta$ -catenin were detected in THP-1 macrophages.

