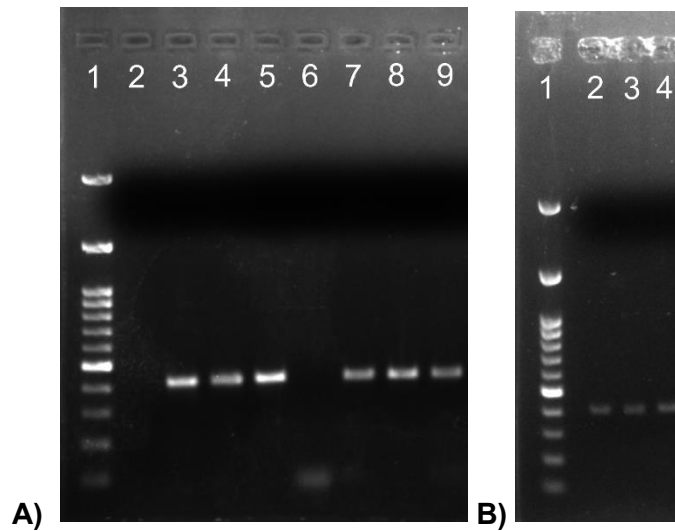


Supplementary Figures



Supplementary Figure 1. Validation of the *DMD* variant in the affected cat. A) Optimization of PCR conditions for *DMD* variant validation. The expected 422 bp PCR product was amplified. Lane 1: 100 bp PLUS™ DNA Ladder (Gold Biotechnology, Inc., Olivette, MO); Lanes 2 - 5: 1.5 mM MgCl₂; Lanes 6 - 9: 2.0 mM MgCl₂; Lanes 2, 6: No template control, annealing at 55°C; Lanes 3, 7: Fcat_4406, 55°C; Lanes 4, 8: Fcat_4406, 58°C; Lanes 5, 9: Fcat_4406, 61°C. Lane 3 that represented 55°C and 1.5 mM MgCl₂ were used to amplify the case cat for Sanger sequencing. B) *DMD* PCR product for validation by Sanger sequencing. Lane 1: 100 bp PLUS™ DNA Ladder (Gold Biotechnology, Inc., Olivette, MO); 2: control - Fcat_4406; 3: control - Fcat_12682; 4: case - Fcat_23286. DNA from the two control cats and the case cat produce a 422 bp fragment for Sanger sequencing. The brightest fragment in the DNA ladder is 500 bp.