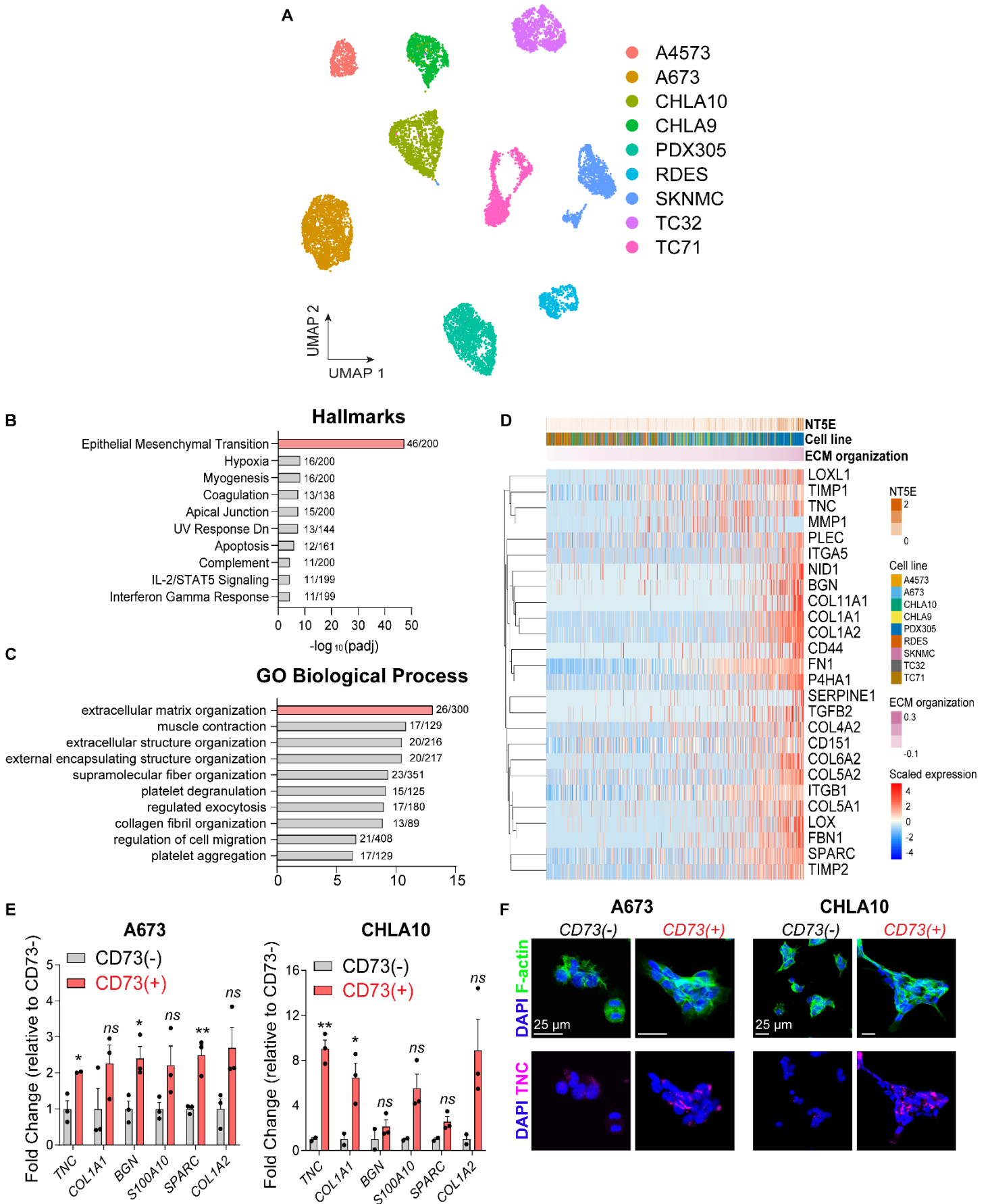


Figure S2



Supplemental Figure S2. CD73+ cells are enriched in EMT and ECM gene expression. Related to Figure

2. A) UMAP of CITE-seq data showing 9 EwS cell lines. B-C) Gene ontology (Enrichr) of Hallmark gene sets (B) and GO Biological Process (C) of the top 200 significantly differentially expressed genes in NT5E⁺ vs. NT5E⁻ cells (pooling 9 cell lines). D) Heatmap of expression (by single cell sequencing) of 26 ECM organization genes (GO:0030198) enriched in NT5E⁺ cells from all 9 cell lines. Cells ranked by ECM Organization gene set expression. E) RT-qPCR of select *NT5E*-associated markers in CD73-sorted cells (n=3, error bars=SEM, *p*-values = unpaired t-tests). F) Immunofluorescence staining of F-actin and Tenascin-C in CD73-sorted cells in 2D culture, 24 hours after FACS. Representative images of n=2.