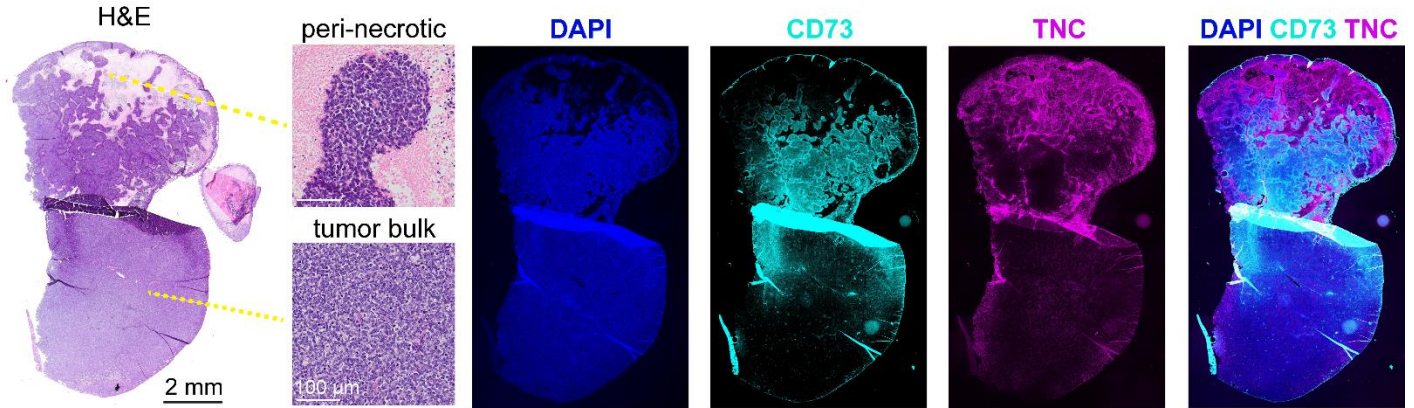
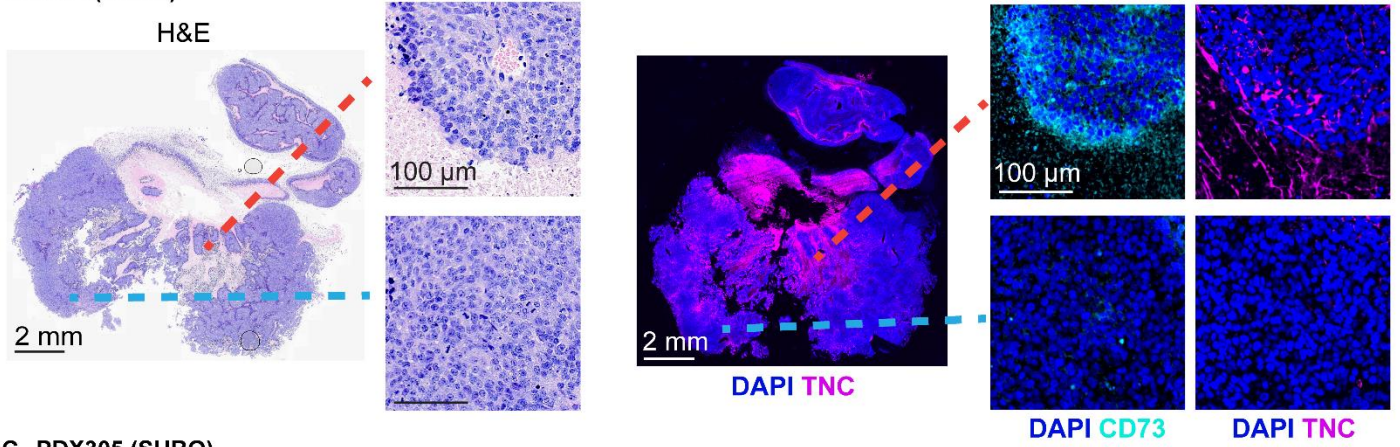


Figure S3

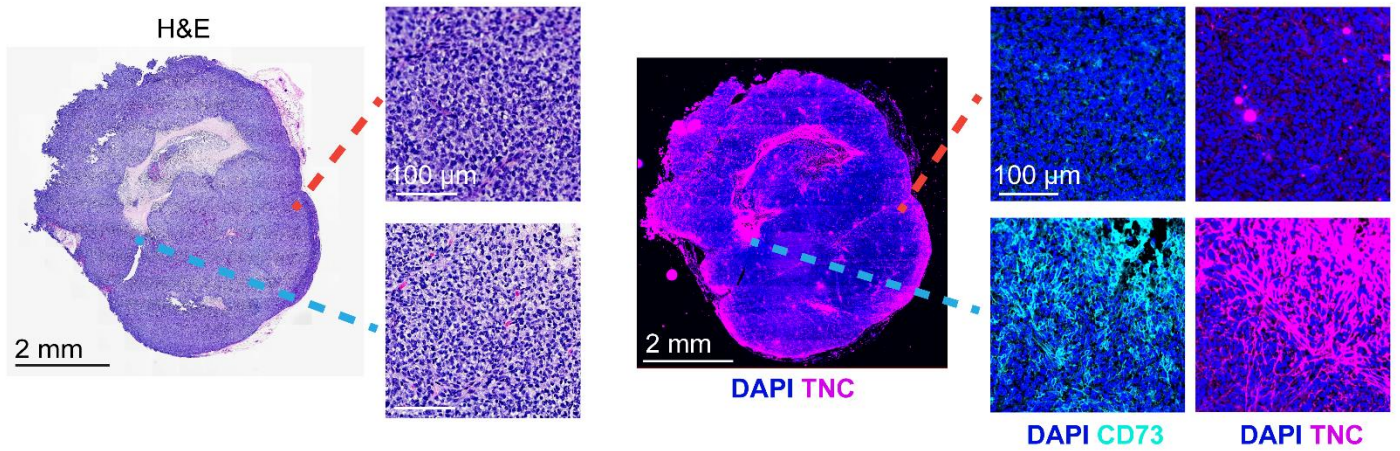
**A CHLA10 retroperitoneal tumor (TV2)**



**B A673 (SUBQ)**



**C PDX305 (SUBQ)**



**Supplemental Figure S3. Spatial heterogeneity of CD73<sup>+</sup> tumor cells and ECM deposition in additional xenograft and PDX-derived models. Related to Figure 3.** A) Left, H&E of a retroperitoneal tumor formed after tail vein injection of CHLA10 cells (Figure 3, TV2). Right, immunofluorescence for CD73, TNC, and DAPI (nuclei) in tumor bulk and peri-necrotic regions. B) Immunofluorescence for TNC and DAPI (nuclei) in an A673 subcutaneous (SUBQ) xenograft tumor section. Right, zoomed insets of CD73 and TNC immunofluorescence. C) Immunofluorescence for TNC and DAPI (nuclei) in a patient-derived xenograft (PDX305) subcutaneous tumor section. Right, zoomed insets of CD73 and TNC immunofluorescence.