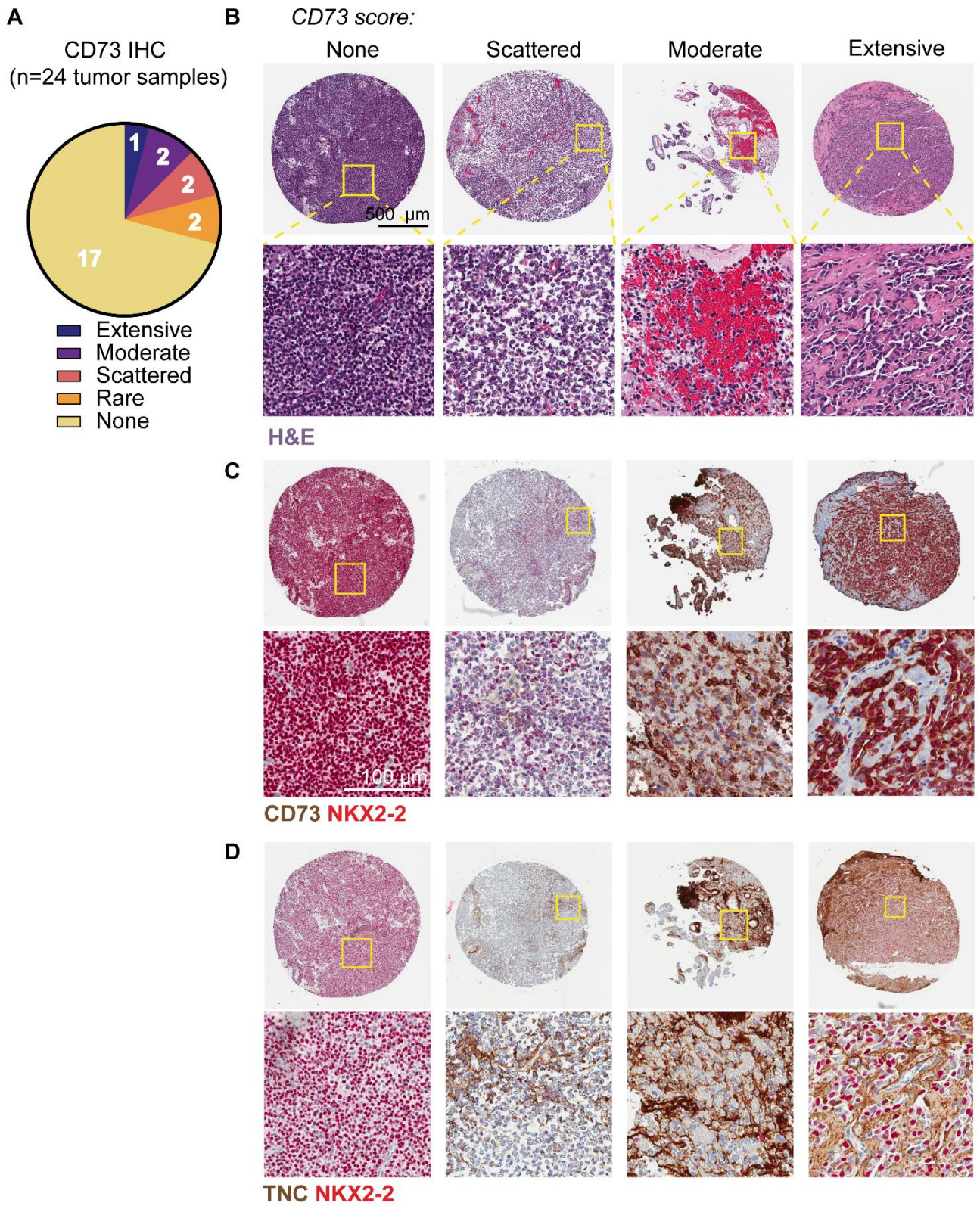


Figure S6



Supplemental Figure S6. Intertumoral heterogeneity of CD73⁺ tumor cells and ECM deposition in patient biopsies. Related to Figure 6. A) CD73⁺ EwS cell score for 24 EwS tumor biopsy specimens as determined by IHC score. Thirty-nine sections were scored from 24 tumor samples, representing 20 unique patients (details in Supplemental Table 7). B) Representative H&E images from negative, scattered, moderate, and extensive CD73 expressing tumors. C) & D) CD73 (C, brown) and TNC (D, brown) plus nuclear tumor marker NKX2-2 (red, C&D) IHC from TMA sections adjacent to H&E stained sections in (B).