

Supplementary Material 1. PICO Questions and Scoping Review Search Strategy

PICO-1

Population: ED patients ≥ 65 y in the ED

Intervention: Any effort to evaluate communication or medical information exchange between ED healthcare team and patient or care partner;

Comparison Standard processes/procedures for communication between patient/family/care partner and ED care team;

Outcomes: Differences between patients with and without dementia in communication effectiveness (ability to recall ED diagnosis, prescriptions and/or follow-up recommendations at time of discharge and at 24-hours), admission rates, ED returns at 3-days and 30-days, and patient/care partner/provider experience.

The search for PICO 1 focused on communicating with the patient and caregiver and shared decision making in the emergency department. The search also expanded outside of the emergency department setting to find relevant literature on communication strategies for older adults with or without cognitive dysfunction or dementia. This expanded search was restricted to peer-reviewed qualitative and quantitative studies in the Ovid Medline and Embase databases. A total of 7901 results were downloaded to a citation management software (EndNote), and underwent automated deduplication using a system at the Cushing/Whitney Medical Library at Yale University. 5478 unique records were uploaded to a screening platform (Covidence), where 36 further duplicates were removed for a total of 5451 records for independent review by several project team members using a pre-determined inclusion/exclusion criteria.

PICO-2

Population: ED patients ≥ 65 y with known or suspected dementia/cognitive impairment discharged from the ED.

Intervention: Augmented communication effort (examples: Teach Back, next day telephone follow-up, hearing aid for auditory impairment, glasses for visually impaired, interpreter for foreign language speaker, health literacy adjusted discharge instructions, shared decision-making instrument, structured engagement of identified care partner real-time)

Comparison: Standard processes/procedures for communication between patient/family/care partner and ED care team

Outcomes: Comprehension of discharge instructions and 24-hour recall of ED discharge instructions (including ED diagnosis, new prescriptions, de-prescribing of old medications, return precautions, follow-up instructions), ED returns at 24-hours and out to 30-days, hospital admissions at 1-week, change in living situation (loss of independence) at 3 months.

The search for PICO 2 focused on communicating with the patient and caregiver and shared decision making during discharge from the emergency department. The search also expanded outside of the emergency department setting to find relevant literature on shared decision making for elderly patients or patients with cognitive impairment outside of the ED or discharge procedures in either emergency department patients or patients with cognitive impairment and dementia. This expanded search was restricted to peer-reviewed qualitative and quantitative studies in the Ovid Medline and Embase databases. A total of 4191 results were downloaded to a citation management software (EndNote), and underwent automated deduplication using a system at the Cushing/Whitney Medical Library At Yale University. 2703 unique records were uploaded to a screening platform (Covidence), where 16 further duplicates were removed for a total of 2687 records for independent review by

several project team members using a predetermined inclusion/exclusion criteria.

PICO 1

Database Searched	Date Searched	PICO-1	Exp. 1a	Exp. 1b	Results
MEDLINE (Ovid)	03/24/2021	316	596	1617	2382
Embase	03/24/2021	702	696	2374	3582
Cochrane Central Register of Controlled Trials	03/26/2021				371
CINAHL (Ebsco)	03/25/2021				782
PsycINFO (Ebsco)	03/25/2021				432
PubMed Central	03/25/2021				23
Web of Science	03/25/2021				323
Proquest Global Theses and Dissertations	03/25/2021				6
Total					7901
After de-duplication by Yale Deduplication Program					5478
After de-duplication by Covidence					5451

PICO 2

Database Searched	Date Searched	PICO-2	Exp. 2a	Exp. 2b	Results
MEDLINE (Ovid)	03/24/2021	107	546	599	1228
Embase	03/24/2021	339	1075	673	2051
Cochrane Central Register of Controlled Trials	03/26/2021				188
CINAHL (Ebsco)	03/25/2021				276
PsycINFO (Ebsco)	03/25/2021				105
PubMed Central	03/25/2021				5
Web of Science	03/25/2021				143
Proquest Global Theses and Dissertations	03/25/2021				3
Total					4191
After de-duplication by Yale Deduplication Program					2703
After de-duplication by Covidence					2687

Ovid Medline

PICO 1—2382 results on 03/24/21

Ovid MEDLINE(R) ALL <1946 to March 23, 2021>

1 Communication/or exp health communication/or exp communication barriers/or exp comprehension/or communicat*.ti,ab. or (teach-back or teachback).ti,ab. or (information adj2 (obtain* or transfer or exchange or disclosure)).ti,ab. or comprehend.ti,ab. or Comprehension.ti,ab. or ((caregiver* or care-giver* or instruction* or discharge* or diagnos* or document* or message* or option* or medication) adj2 (Understand or understood or understanding)).ti,ab. or exp literacy/or exp teach-back communication/or exp Information Literacy/or exp patient education as topic/or exp pamphlets/or exp consumer health information/or literacy.ti,ab. or "Plain language".-ti,ab. or Conversation*.ti,ab. or pamphlet*.ti,ab. or (patient* adj3 (hand-out* or handout*)).ti,ab. or ((caregiver* or care-giver* or patient*) adj3 (education or recall)).ti,ab. or (instruction* adj3 (discharge* or return or care-giver* or patient* or medication*)).ti,ab. or (knowledge adj2 (Medication or drug)).mp. or ((telephone or phone or call or called) adj5 (followup or follow-up or discharge)).ti,ab. or ((educat* or nurse or occupational or geriatric* or service* or appointment*) adj5 (followup or follow-up or referral)).ti,ab. or (refer*

adj3 "secondary care").ti,ab. or ((patient* or caregiver* or care-giver* or family) adj3 (contact* or participation or Engagement or engaging)).ti,ab. or (perception* adj1 (patient* or family or caregiver* or care-giver*)).ti,ab. or (family adj1 meeting).ti,ab. or "geriatric consultation".ti,ab. or exp shared decision making/or (decision-making adj2 (shared or family or caregiver* or care-giver* or patient*)).ti,ab. or exp electronic amplifiers/or exp Correction of Hearing Impairment/or exp hearing aids/or ((aid or aids) adj2 (reading or vision or visual)).-ti,ab. or (vision adj1 magnifier).ti,ab. or (hearing adj2 (amplifier* or aid*)).ti,ab. or (assistive adj1 device*).ti. or (reading adj1 glasses).ti,ab. or (sign adj1 language).ti,ab. or interpretor.ti,ab. 681958

2 exp Cognitive Dysfunction/or ((cognitive* or cognition* or neurocogniti* or neuro-cogniti*) adj3 (disorder* or defect* or deficit* or disabilit* or dysfunction* or disfunction* or impair* or interference* or decline* or function* or deteriorat*)).ti,ab. or exp dementia/or (dementia* or amentia* or dementia* or CADASIL* or Alzheimer* or Creutzfeldt-Jakob or Huntington* or Lewy-Bod*).ti,ab. 412971

3 exp Aged/or (elderly or elderlies or centenarian* or nonagenarian* or octogenarian* or septuagenarian* or sexagenarian* or geriatric* or senium*).mp. or (senior* adj1 citizen*).mp. or ((older or frail*) adj2 (hospitalized or hospitalised or elder* or patient* or person* or inpatient* or people or adult*)).mp. or "aged adult".mp. or "aged adults".mp. or "aged patient".mp. or "aged patients".mp. or gerontolog*.jw. or geriatric*.jw. or ageing.jw. or aging.jw. 3428488

4 exp Emergency Medical Services/or exp hospital emergency service/or emergicenter*.ti,ab. or (acute adj2 (setting or care or ward or hospital)).ti,ab. or (trauma adj1 (patient* or center* or centre* or department* or unit* or room*)).ti,ab. or ((Emergency or emergencies) adj3 (care or service* or dispatch* or department* or unit* or ward* or room* or center* or centre* or system* or stay* or admit* or admission* or evaluation* or assess* or medicine or visit* or Nurs* or physician* or patient* or clinician or personnel or accidents)).ti,ab. or ((EMS or ED or ER) adj3 (care or service* or dispatch* or department* or unit* or ward* or room* or center* or centre* or system* or stay* or admit* or admission* or evaluation* or assess* or visit* or Nurs* or physician* or patient* or personnel)).ti,ab. or (("a&e" or "a & e") adj2 (department* or admission* or admitted)).ti,ab. 323418

5 1 and 2 and 3 and 4 316

6 (elderly or elderlies or geriatric* or (senior* adj1 citizen*) or ((older or frail*) adj2 (hospitalized or hospitalised or elder* or patient* or person* or inpatient* or people or adult*)) or (aged adj1 (patient* or adult* or people))).ti. or gerontolog*.jw. or geriatric*.jw. or ageing.jw. or aging.jw. 337358

7 exp Emergency Medical Services/or exp hospital emergency service/or emergicenter*.ti,ab. or (emergency adj3 (department* or ward* or Nurs* or physician* or medicine or accidents)).ti,ab. or (acute adj2 (setting or care)).ti,ab. 244689

8 ((qualitative adj1 research) or (clinical adj4 trial*).ti. or exp clinical trial/or ((controlled or community) adj2 (study or trial)).mp. or (study adj2 (comparative or feasibility or observational or panel or pilot or prevention or quality or validation or longitudinal or "Case control")).mp. or consensus.hw. or exp clinical study/or exp observational study/or exp retrospective studies/or exp "Surveys and Questionnaires"/or exp interview/or exp practice guideline/or exp "Review Literature as Topic"/or exp "Systematic Review"/or exp "Review"/or "joint commission".ti,ab. or (focus adj1 group*).ti,ab. or survey.ti,ab. or "mixed methods".ti,ab. or retrospective*.ti,ab. or review.mp. or interview*.mp. or recorded.mp. or (qualitative adj2 research).mp. or (needs adj1 assessment).mp. or (practice adj1 guideline*).ti. or retrospective*.mp. or review.ti. 8836902

9 1 and 6 and 7 and 8 596

10 Communication/or exp comprehension/or exp communication barriers/or communicat*.ti. or (communicat* adj5 (older-adult* or elderly or geriatric or patient* or caregiver* or care-giver* or family or

clinician* or strateg* or physician or nurse or care or needs or positive or skill* or technolog* or difficult* or improv* or system* or gap* or barrier* or verbal)).mp. or (teachback or teach-back).ti,ab. or comprehend.ti,ab. or Comprehension.ti,ab. or ((care-giver* or caregiver* or instruction* or discharge* or diagnos* or document* or message* or option* or medication) adj2 (Understand or understood or understanding)).ti,ab. or exp patient education as topic/or ((care-giver* or caregiver* or patient*) adj3 (education or recall)).ti,ab. or (instruction* adj3 (discharge* or return or care-giver* or patient* or medication*)).ti,ab. or (Medication adj2 knowledge).ti,ab. or exp electronic amplifiers/or ((aid or aids) adj2 (reading or vision or visual)).ti,ab. or (vision adj1 magnifier).ti,ab. or (hearing adj2 amplifier*).ti,ab. or (assistive adj1 device*).ti. or (reading adj1 glasses).ti,ab. or (sign adj1 language).ti,ab. or interpretor.ti,ab. or exp consumer health information/366175

11 (((cognitive* or cognition* or neurocogniti* or neuro-cogniti*) adj3 (disorder* or defect* or deficit* or disabilit* or dysfunction* or disfunction* or impairment* or interference* or decline* or function* or deteriorat*)) or (dementia* or amentia* or dementia* or CADASIL* or Alzheimer* or Creutzfeldt-Jakob or Huntington* or Lewy-Bod*).ti. 179912

12 3 and 8 and 10 and 11 1617

13 5 or 9 or 12 2382

PICO 2—1228 results on March 24, 2021

Ovid MEDLINE(R) ALL <1946 to March 23, 2021>

1 Communication/or exp health communication/or exp communication barriers/or exp comprehension/or communicat*.ti,ab. or (teach-back or teachback).ti,ab. or (information adj2 (obtain* or transfer or exchange or disclosure)).ti,ab. or comprehend.ti,ab. or Comprehension.ti,ab. or ((caregiver* or care-giver* or instruction* or discharge* or diagnos* or document* or message* or option* or medication) adj2 (Understand or understood or understanding)).ti,ab. or exp literacy/or exp teach-back communication/or exp Information Literacy/or exp patient education as topic/or exp pamphlets/or exp consumer health information/or literacy.ti,ab. or "Plain language".-ti,ab. or Conversation*.ti,ab. or pamphlet*.ti,ab. or (patient* adj3 (hand-out* or handout*)).ti,ab. or ((caregiver* or care-giver* or patient*) adj3 (education or recall)).ti,ab. or (instruction* adj3 (discharge* or return or care-giver* or patient* or medication*)).ti,ab. or (knowledge adj2 (Medication or drug)).mp. or ((telephone or phone or call or called) adj5 (followup or follow-up or discharge)).ti,ab. or ((educat* or nurse or occupational or geriatric* or service* or appointment*) adj5 (followup or follow-up or referral)).ti,ab. or (refer* adj3 "secondary care").ti,ab. or ((patient* or caregiver* or care-giver* or family) adj3 (contact* or participation or Engagement or engaging)).ti,ab. or (perception* adj1 (patient* or family or caregiver* or care-giver*)).ti,ab. or (family adj1 meeting).ti,ab. or "geriatric consultation".ti,ab. or exp shared decision making/or (decision-making adj2 (shared or family or caregiver* or care-giver* or patient*)).ti,ab. or exp electronic amplifiers/or exp Correction of Hearing Impairment/or exp hearing aids/or ((aid or aids) adj2 (reading or vision or visual)).-ti,ab. or (vision adj1 magnifier).ti,ab. or (hearing adj2 (amplifier* or aid*)).ti,ab. or (assistive adj1 device*).ti. or (reading adj1 glasses).ti,ab. or (sign adj1 language).ti,ab. or interpretor.ti,ab. 681958

2 exp Emergency Medical Services/or exp hospital emergency service/or emergicenter*.ti,ab. or (acute adj2 (setting or care or ward or hospital)).ti,ab. or (trauma adj1 (patient* or center* or centre* or department* or unit* or room*)).ti,ab. or ((Emergency or emergencies) adj3 (care or service* or dispatch* or department* or unit* or ward* or room* or center* or centre* or system* or stay* or admit* or admission* or evaluation* or assess* or medicine or visit* or Nurs* or physician* or patient* or clinician or personnel or accidents)).ti,ab. or ((EMS or ED or ER) adj3 (care or service* or dispatch* or department* or unit* or ward* or room* or center* or centre* or system* or stay* or

admit* or admission* or evaluation* or assess* or visit* or Nurs* or physician* or patient* or personnel)).ti,ab. or ((("a&e" or "a & e")) adj2 (department* or admission* or admitted)).ti,ab. 323418

3 exp patient discharge/or discharge.ti,ab. or discharged.ti,ab. 262694

4 exp Cognitive Dysfunction/or ((cognitive* or cognition* or neurocogniti* or neuro-cogniti*) adj3 (disorder* or defect* or deficit* or disabilit* or dysfunction* or disfunction* or impair* or interference* or decline* or function* or deteriorat*)).ti,ab. or exp dementia/or (dementia* or amentia* or dementia* or CADASIL* or Alzheimer* or Creutzfeldt-Jakob or Huntington* or Lewy-Bod*).ti,ab. 412971

5 1 and 2 and 3 and 4 107

6 exp shared decision making/or (decision-making adj2 (shared or family or caregiver* or care-giver* or patient*)).ti,ab. 14711

7 (((cognitive* or cognition* or neurocogniti* or neuro-cogniti*) adj3 (disorder* or defect* or deficit* or disabilit* or dysfunction* or disfunction* or impairment* or interference* or decline* or function* or deteriorat*)) or (dementia* or amentia* or dementia* or CADASIL* or Alzheimer* or Creutzfeldt-Jakob or Huntington* or Lewy-Bod*).ti. 179912

8 ((qualitative adj1 research) or (clinical adj4 trial*)).ti. or exp clinical trial/or ((controlled or community) adj2 (study or trial)).mp. or (study adj2 (comparative or feasibility or observational or panel or pilot or prevention or quality or validation or longitudinal or "Case control")).mp. or consensus.hw. or exp clinical study/or exp observational study/or exp retrospective studies/or exp "Surveys and Questionnaires"/or exp interview/or exp practice guideline/or exp "Review Literature as Topic"/or exp "Systematic Review"/or exp "Review"/or "joint commission".ti,ab. or (focus adj1 group*).ti,ab. or survey.ti,ab. or "mixed methods".ti,ab. or retrospective*.ti,ab. or review.mp. or interview*.mp. or recorded.mp. or (qualitative adj2 research).mp. or (needs adj1 assessment).mp. or (practice adj1 guideline*).ti. or retrospective*.mp. or review.ti. 8836902

9 (elderly or elderlies or geriatric* or (senior* adj1 citizen*) or ((older or frail*) adj2 (hospitalized or hospitalised or elder* or patient* or person* or inpatient* or people or adult*)) or (aged adj1 (patient* or adult* or people))).ti. or gerontolog*.jw. or geriatric*.jw. or ageing.jw. or aging.jw. 337358

10 7 or 9 487094

11 6 and 8 and 10 546

12 Communication/or exp comprehension/or exp communication barriers/or communicat*.ti. or (communicat* adj5 (older-adult* or elderly or geriatric or patient* or caregiver* or care-giver* or family or clinician* or strateg* or physician or nurse or care or needs or positive or skill* or technolog* or difficult* or improv* or system* or gap* or barrier* or verbal)).mp. or (teachback or teach-back).ti,ab. or comprehend.ti,ab. or Comprehension.ti,ab. or ((care-giver* or caregiver* or instruction* or discharge* or diagnos* or document* or message* or option* or medication) adj2 (Understand or understood or understanding)).ti,ab. or exp patient education as topic/or exp consumer health information/or ((care-giver* or caregiver* or patient*) adj3 (education or recall)).ti,ab. or (instruction* adj3 (discharge* or return or care-giver* or patient* or medication)).ti,ab. or (Medication adj2 knowledge).ti,ab. or exp electronic amplifiers/or ((aid or aids) adj2 (reading or vision or visual)).ti,ab. or (vision adj1 magnifier).ti,ab. or (hearing adj2 amplifier*).ti,ab. or (assistive adj1 device*).ti. or (reading adj1 glasses).ti,ab. or (sign adj1 language).ti,ab. or interpretor.ti,ab. 366175

13 ((acute adj2 (setting or care or ward or hospital)) or (trauma adj1 (patient* or center* or centre* or department* or unit* or room*)) or ((Emergency or emergencies) adj3 (care or service* or dispatch* or department* or unit* or ward* or room* or center* or centre* or system* or stay* or admit* or admission* or evaluation* or assess* or medicine or visit* or Nurs* or physician* or clinician* or personnel or patient* or accidents)) or ((EMS or ED or ER) adj3 (care or service* or

dispatch* or department* or unit* or ward* or room* or center* or centre* or system* or stay* or admit* or admission* or evaluation* or assess* or visit* or Nurs* or physician* or patient* or personnel)).ti. 86075

14 7 or 13 265627

15 3 and 8 and 12 and 14 599

16 5 or 11 or 15 1228

Embase.com

PICO 1—3582 results on March 25, 2021

Embase

Session Results

.....

No. Query Results Results Date

#15. #5 OR #10 OR #14 3,582 25 Mar 2021

#14. #3 AND #8 AND #11 AND #12 AND ([article]/lim OR 2,374 25 Mar 2021

[article in press]/lim OR [data papers]/lim OR

[editorial]/lim OR [erratum]/lim OR [letter]/lim

OR [note]/lim OR [review]/lim OR [short

survey]/lim)

#13. #3 AND #8 AND #11 AND #12 2,757 25 Mar 2021

#12. (((cognitive* OR cognition* OR neurocogniti* OR 247,200 25 Mar 2021

'neuro cogniti*) NEAR/3 (disorder* OR defect* OR

deficit* OR disabilit* OR dysfunction* OR

disfunction* OR impairment* OR interference* OR

decline* OR function* OR deteriorat*);ti) OR

dementia*:ti OR amentia*:ti OR dementia*:ti OR

cadasil*:ti OR alzheimer*:ti OR 'creutzfeldt

jakob':ti OR huntington*:ti OR 'lewy bod*':ti

#11. 'interpersonal communication'/de OR 514,246 25 Mar 2021

'communication barrier'/de OR 'communication

skill'/de OR 'verbal communication'/de OR

communicat*:ti OR ((communicat* NEAR/5 ('older

adult*' OR elderly OR geriatric OR patient* OR

caregiver* OR 'care giver*' OR family OR

clinician* OR strateg* OR physician OR nurse OR

care OR needs OR positive OR skill* OR technolog*

OR difficult* OR improv* OR system* OR gap OR

barrier* OR verbal):ti,ab) OR teachback:ti,ab,kw

OR 'teach back':ti,ab,kw OR comprehend:ti,ab,kw

OR comprehension:ti,ab,kw OR (((caregiver* OR

'care giver*' OR instruction* OR discharge* OR

diagnos* OR document* OR message* OR option* OR

medication) NEAR/2 (understand OR understood OR

understanding)):ti,ab,kw,de) OR 'patient

education'/exp OR (((caregiver OR 'care giver' OR

patient*) NEAR/3 (education OR

recall):ti,ab,kw,de) OR ((family NEAR/1

(consult* OR meeting)):ti,ab,kw,de) OR

((instruction* NEAR/3 (discharge* OR return OR

caregiver* OR 'care giver*' OR patient* OR

medication*)):ti,ab,kw,de) OR ((medication NEAR/2

knowledge):ti,ab,kw,de) OR 'amplifier'/exp OR

((aid OR aids) NEAR/2 (reading OR vision OR

visual)):ti,ab,kw,de) OR ((vision NEAR/1

magnifier):ti,ab,kw,de) OR ((assistive NEAR/1

device*):ti) OR ((hearing NEAR/2

amplifier*):ti,ab,kw,de) OR ((reading NEAR/1

glasses):ti,ab,kw,de) OR ((sign NEAR/1

language):ti,ab,kw,de) OR interpretor:ti,ab,kw,de

#10. #1 AND #6 AND #7 AND #8 AND ([article]/lim OR 696 25 Mar 2021

[article in press]/lim OR [data papers]/lim OR

[editorial]/lim OR [erratum]/lim OR [letter]/lim

OR [note]/lim OR [review]/lim OR [short survey]/lim)
 #9. #1 AND #6 AND #7 AND #8 1,186 25 Mar 2021
 #8. 'qualitative research'/exp OR 'clinical 17,252,520 25 Mar 2021 trial'/exp OR 'controlled study'/exp OR 'comparative study'/de OR 'feasibility study'/de OR 'observational study'/exp OR 'panel study'/exp OR 'pilot study'/exp OR 'prevention study'/exp OR 'quality improvement study'/exp OR 'quasi experimental study'/exp OR 'validation study'/exp OR 'community trial'/exp OR 'intervention study'/exp OR 'longitudinal study'/exp OR 'major clinical study'/exp OR 'prospective study'/exp OR 'retrospective study'/exp OR 'interview'/exp OR 'observational method'/exp OR 'questionnaire'/exp OR 'case control study'/exp OR 'control'/exp OR 'practice guideline'/exp OR 'consensus development'/exp OR 'review'/exp OR 'joint commission':ti,ab OR ((focus NEAR/1 group*):ti,ab) OR survey:ti,ab OR 'mixed methods':ti,ab OR retrospective*:ti,ab OR review:ti,ab,kw,de OR interview*:ti,ab,kw,de OR recorded:ti,ab,kw,de OR ((qualitative NEAR/2 research):ti,ab,kw,de) OR ((needs NEAR/1 assessment):ti,ab,kw,de) OR ((practice NEAR/1 guideline*):ti) OR 'qualitative research':ti,ab,kw,de OR retrospective*:ti,ab,kw,de OR review:ti
 #7. 'emergency health service'/exp OR 'emergency 351,919 25 Mar 2021 ward'/exp OR emergicenter*:ti,ab OR ((emergency NEAR/3 (department* OR ward* OR nurs* OR physician* OR medicine OR accidents)):ti,ab) OR ((acute NEAR/2 (care OR ward)):ti,ab)
 #6. elderly:ti OR elderlies:ti OR geriatric*:ti OR 442,580 25 Mar 2021 ((senior* NEAR/1 citizen*):ti) OR (((older OR frail*) NEAR/2 (hospitalized OR hospitalised OR elder* OR patient* OR person* OR inpatient* OR people OR adult*)):ti) OR ((aged NEAR/1 (patient* OR adult* OR people*)):ti) OR gerontolog*:jt OR geriatric*:jt OR ageing:jt OR aging:jt
 #5. #1 AND #2 AND #3 AND #4 702 25 Mar 2021
 #4. 'emergency health service'/exp OR 'emergency 512,754 25 Mar 2021 ward'/exp OR emergicenter*:ti,ab,kw,de OR ((acute NEAR/2 (setting OR care OR ward OR hospital)):ti,ab) OR ((trauma NEAR/1 (patient* OR center* OR centre* OR department* OR unit* OR room*)):ti,ab) OR (((emergency OR emergencies) NEAR/3 (care OR service* OR dispatch* OR department* OR unit* OR ward* OR room* OR center* OR centre* OR system* OR stay* OR admit* OR admission* OR evaluation* OR assess* OR medicine OR visit* OR nurs* OR physician* OR clinician* OR personnel OR patient* OR accidents)):ti,ab,kw,de) OR (((ems OR ed OR er) NEAR/3 (care OR service* OR dispatch* OR department* OR unit* OR ward* OR room* OR center* OR centre* OR system* OR stay* OR admit* OR admission* OR evaluation* OR assess* OR visit* OR nurs* OR physician* OR patient* OR personnel)):ti,ab,kw,de) OR (((a&e' OR 'a & e') NEAR/2 (department* OR admission* OR admitted)):ti,ab)
 #3. 'aged'/exp OR elderly:ti,ab,kw,de OR 3,551,823 25 Mar 2021 elderlies:ti,ab,kw,de OR centenarian*:ti,ab,kw,de OR nonagenarian*:ti,ab,kw,de OR octogenarian*:ti,ab,kw,de OR septuagenarian*:ti,ab,kw,de OR sexagenarian*:ti,ab,kw,de OR geriatric*:ti,ab,kw,de OR senium*:ti,ab,kw,de OR ((senior* NEAR/1 citizen*):ti,ab,kw,de) OR (((older OR frail*) NEAR/2 (hospitalized OR hospitalised OR elder* OR patient* OR person* OR inpatient* OR people OR adult*)):ti,ab,kw,de) OR 'aged adult':ti,ab,kw,de OR 'aged adults':ti,ab,kw,de OR 'aged patient':ti,ab,kw,de OR 'aged patients':ti,ab,kw,de OR gerontolog*:jt OR geriatric*:jt OR ageing:jt OR aging:jt
 #2. 'cognitive defect'/exp OR (((cognitive* OR 689,538 25 Mar 2021 cognition* OR neurocogniti* OR 'neuro cogniti*') NEAR/3 (disorder* OR defect* OR deficit* OR disabilit* OR dysfunction* OR disfunction* OR impair* OR interference* OR decline* OR function* OR deteriorat*)):ti,ab,kw) OR 'dementia'/exp OR dementia*:ti,ab,kw OR amentia*:ti,ab,kw OR dementia*:ti,ab,kw OR cadasil*:ti,ab,kw OR alzheimer*:ti,ab,kw OR 'creutzfeldt jakob':ti,ab,kw OR huntington*:ti,ab,kw OR 'lewy bod*':ti,ab,kw
 #1. 'interpersonal communication'/de OR 975,337 25 Mar 2021 'communication barrier'/de OR 'communication skill'/de OR 'verbal communication'/de OR communicat*:ti,ab,kw OR 'teach back':ti,ab,kw OR teachback:ti,ab,kw OR ((information NEAR/2 (obtain* OR transfer OR exchange OR disclosure)):ti,ab,kw,de) OR comprehend:ti,ab,kw OR comprehension:ti,ab,kw OR (((('care giver*' OR caregiver* OR instruction* OR discharge* OR diagnos* OR document* OR message* OR option* OR medication) NEAR/2 (understand OR understood OR understanding)):ti,ab,kw,de) OR 'literacy'/exp OR 'health literacy'/exp OR 'patient education'/exp OR 'consumer health information'/exp OR literacy:ti,ab,kw,de OR 'plain language':ti,ab,kw,de OR conversation*:ti,ab,kw,de OR pamphlet*:ti,ab,kw,de OR ((patient* NEAR/3 ('hand out*' OR handout*)):ti,ab,kw,de) OR (((caregiver OR 'care giver*' OR patient*) NEAR/3 (education OR recall)):ti,ab,kw,de) OR ((instruction* NEAR/3 (discharge* OR return OR caregiver* OR 'care giver*' OR patient* OR medication*)):ti,ab,kw,de) OR ((medication NEAR/2 knowledge):ti,ab,kw,de) OR (((telephone OR phone OR call OR called) NEAR/5 (followup OR 'follow up' OR discharge)):ti,ab,kw,de) OR (((educat* OR nurse OR occupational OR geriatric* OR service* OR appointment*) NEAR/5 (followup OR 'follow up*' OR referral)):ti,ab,kw,de) OR ((refer* NEAR/3 'secondary care'):ti,ab,kw,de) OR (((patient* OR caregiver* OR 'care giver*' OR family) NEAR/3 (contact* OR participation OR engagement OR engaging)):ti,ab,kw,de) OR ((perception* NEAR/1 (patient* OR family OR caregiver* OR 'care giver*')):ti,ab,kw,de) OR ((family NEAR/1 meeting):ti,ab,kw,de) OR 'geriatric consultation':ti,ab,kw,de OR 'shared decision making'/exp OR 'patient decision making'/exp OR 'family decision making'/exp OR (('decision

- making' NEAR/2 (shared OR family OR caregiver* OR 'care giver*' OR patient*)):ti,ab) OR 'hearing aid'/exp OR 'amplifier'/exp OR 'auditory rehabilitation'/exp OR 'electronic visual aid'/exp OR 'optical visual aid'/exp OR (((aid OR aids OR magnifier) NEAR/2 (reading OR vision OR visual)):ti,ab) OR ((hearing NEAR/2 (amplifier* OR aid*)):ti,ab,kw,de) OR ((assistive NEAR/1 device*):ti) OR ((reading NEAR/1 glasses):ti,ab,kw,de) OR ((sign NEAR/1 language):ti,ab,kw,de) OR interpreter:ti,ab,kw,de
PICO 2 – 2051 results on March 24, 2021
Embase
Session Results
.....
No. Query Results Results Date
#19. #5 OR #12 OR #18 2,051 24 Mar 2021
#18. #9 AND #13 AND #14 AND #16 AND ([article]/lim OR 673 24 Mar 2021
[article in press]/lim OR [data papers]/lim OR [editorial]/lim OR [erratum]/lim OR [letter]/lim OR [note]/lim OR [review]/lim OR [short survey]/lim)
#17. #9 AND #13 AND #14 AND #16 1,155 24 Mar 2021
#16. #8 OR #15 364,734 24 Mar 2021
#15. ((acute NEAR/2 (setting OR care OR ward OR 117,988 24 Mar 2021
hospital)):ti) OR ((trauma NEAR/1 (patient* OR center* OR centre* OR department* OR unit* OR room*)):ti) OR (((emergency OR emergencies) NEAR/3 (care OR service* OR dispatch* OR department* OR unit* OR ward* OR room* OR center* OR centre* OR system* OR stay* OR admit* OR admission* OR evaluation* OR assess* OR medicine OR visit* OR nurs* OR physician* OR clinician* OR personnel OR patient* OR accidents)):ti) OR (((ems OR ed OR er) NEAR/3 (care OR service* OR dispatch* OR department* OR unit* OR ward* OR room* OR center* OR centre* OR system* OR stay* OR admit* OR admission* OR evaluation* OR assess* OR visit* OR nurs* OR physician* OR patient* OR personnel)):ti)
#14. 'interpersonal communication'/de OR 514,246 24 Mar 2021
'communication barrier'/de OR 'communication skill'/de OR 'verbal communication'/de OR communicat*:ti OR ((communicat* NEAR/5 ('older adult*' OR elderly OR geriatric OR patient* OR caregiver* OR 'care giver*' OR family OR clinician* OR strateg* OR physician OR nurse OR care OR needs OR positive OR skill* OR technolog* OR difficult* OR improv* OR system* OR gap OR barrier* OR verbal)):ti,ab) OR teachback:ti,ab,kw OR 'teach back':ti,ab,kw OR comprehend:ti,ab,kw OR comprehension:ti,ab,kw OR (((caregiver* OR 'care giver*' OR instruction* OR discharge* OR diagnos* OR document* OR message* OR option* OR medication) NEAR/2 (understand OR understood OR understanding)):ti,ab,kw,de) OR 'patient education'/exp OR (((caregiver OR 'care giver' OR patient*) NEAR/3 (education OR recall)):ti,ab,kw,de) OR ((family NEAR/1 (consult* OR meeting)):ti,ab,kw,de) OR ((instruction* NEAR/3 (discharge* OR return OR caregiver* OR 'care giver*' OR patient* OR medication*)):ti,ab,kw,de) OR ((medication NEAR/2 knowledge):ti,ab,kw,de) OR 'amplifier'/exp OR (((aid OR aids) NEAR/2 (reading OR vision OR visual)):ti,ab,kw,de) OR ((vision NEAR/1 magnifier):ti,ab,kw,de) OR ((assistive NEAR/1 device*):ti) OR ((hearing NEAR/2 amplifier*):ti,ab,kw,de) OR ((reading NEAR/1 glasses):ti,ab,kw,de) OR ((sign NEAR/1 language):ti,ab,kw,de) OR interpreter:ti,ab,kw,de
#13. 'hospital discharge'/exp OR discharge:ti,ab,kw OR 463,666 24 Mar 2021
discharged:ti,ab,kw
#12. #6 AND #9 AND #10 AND ([article]/lim OR [article 1,075 24 Mar 2021
in press]/lim OR [data papers]/lim OR [editorial]/lim OR [erratum]/lim OR [letter]/lim OR [note]/lim OR [review]/lim OR [short survey]/lim)
#11. #6 AND #9 AND #10 1,348 24 Mar 2021
#10. #7 OR #8 651,480 24 Mar 2021
#9. 'qualitative research'/exp OR 'clinical 17,252,520 24 Mar 2021
trial'/exp OR 'controlled study'/exp OR 'comparative study'/de OR 'feasibility study'/de OR 'observational study'/exp OR 'panel study'/exp OR 'pilot study'/exp OR 'prevention study'/exp OR 'quality improvement study'/exp OR 'quasi experimental study'/exp OR 'validation study'/exp OR 'community trial'/exp OR 'intervention study'/exp OR 'longitudinal study'/exp OR 'major clinical study'/exp OR 'prospective study'/exp OR 'retrospective study'/exp OR 'interview'/exp OR 'observational method'/exp OR 'questionnaire'/exp OR 'case control study'/exp OR 'control'/exp OR 'practice guideline'/exp OR 'consensus development'/exp OR 'review'/exp OR 'joint commission':ti,ab OR ((focus NEAR/1 group*):ti,ab) OR survey:ti,ab OR 'mixed methods':ti,ab OR retrospective*:ti,ab OR review:ti,ab,kw,de OR interview*:ti,ab,kw,de OR recorded:ti,ab,kw,de OR ((qualitative NEAR/2 research):ti,ab,kw,de) OR ((needs NEAR/1 assessment):ti,ab,kw,de) OR ((practice NEAR/1 guideline*):ti) OR 'qualitative research':ti,ab,kw,de OR retrospective*:ti,ab,kw,de OR review:ti
#8. (((cognitive* OR cognition* OR neurocogniti* OR 247,200 24 Mar 2021
'neuro cogniti*') NEAR/3 (disorder* OR defect* OR deficit* OR disabilit* OR dysfunction* OR disfunction* OR impairment* OR interference* OR decline* OR function* OR deteriorat*)):ti) OR dementia*:ti OR amentia*:ti OR demention*:ti OR cadasil*:ti OR alzheimer*:ti OR 'creutzfeldt jakob':ti OR huntington*:ti OR 'lewy bod*':ti
#7. elderly:ti OR elderlies:ti OR geriatric*:ti OR 442,580 24 Mar 2021
((senior* NEAR/1 citizen*):ti) OR ((older OR frail*) NEAR/2 (hospitalized OR hospitalised OR elder* OR patient* OR person* OR inpatient* OR people OR adult*)):ti) OR ((aged NEAR/1 (patient* OR adult* OR people)):ti) OR gerontolog*:jt OR geriatric*:jt OR ageing:jt OR aging:jt
#6. 'shared decision making'/exp OR 'patient decision 34,005 24 Mar 2021
making'/exp OR 'family decision making'/exp OR (('decision making' NEAR/2 (shared OR family OR

caregiver* OR 'care giver*' OR patient*)):ti,ab)
 #5. #1 AND #2 AND #3 AND #4 339 24 Mar 2021
 #4. 'cognitive defect'/exp OR (((cognitive* OR 689,538 24 Mar 2021
 cognition* OR neurocogniti* OR 'neuro cogniti*'))
 NEAR/3 (disorder* OR defect* OR deficit* OR
 disabilit* OR dysfunction* OR disfunction* OR
 impair* OR interference* OR decline* OR function*
 OR deteriorat*)):ti,ab,kw) OR 'dementia'/exp OR
 dementia*:ti,ab,kw OR amentia*:ti,ab,kw OR
 dementia*:ti,ab,kw OR cadasil*:ti,ab,kw OR
 alzheimer*:ti,ab,kw OR 'creutzfeldt
 jakob':ti,ab,kw OR huntington*:ti,ab,kw OR 'lewy
 bod*':ti,ab,kw
 #3. 'hospital discharge'/exp OR discharge:ti,ab,kw OR 463,666 24
 Mar 2021
 discharged:ti,ab,kw
 #2. 'emergency health service'/exp OR 'emergency 512,754 24 Mar
 2021
 ward'/exp OR emergicenter*:ti,ab,kw,de OR ((acute
 NEAR/2 (setting OR care OR ward OR
 hospital)):ti,ab) OR ((trauma NEAR/1 (patient* OR
 center* OR centre* OR department* OR unit* OR
 room*)):ti,ab) OR (((emergency OR emergencies)
 NEAR/3 (care OR service* OR dispatch* OR
 department* OR unit* OR ward* OR room* OR center*
 OR centre* OR system* OR stay* OR admit* OR
 admission* OR evaluation* OR assess* OR medicine
 OR visit* OR nurs* OR physician* OR clinician* OR
 personnel OR patient* OR accidents)):ti,ab,kw,de)
 OR (((ems OR ed OR er) NEAR/3 (care OR service*
 OR dispatch* OR department* OR unit* OR ward* OR
 room* OR center* OR centre* OR system* OR stay*
 OR admit* OR admission* OR evaluation* OR assess*
 OR visit* OR nurs* OR physician* OR patient* OR
 personnel)):ti,ab,kw,de) OR (((a&e' OR 'a & e')
 NEAR/2 (department* OR admission* OR
 admitted)):ti,ab)
 #1. 'interpersonal communication'/de OR 975,337 24 Mar 2021
 'communication barrier'/de OR 'communication
 skill'/de OR 'verbal communication'/de OR
 communicat*:ti,ab,kw OR 'teach back':ti,ab,kw OR
 teachback:ti,ab,kw OR ((information NEAR/2
 (obtain* OR transfer OR exchange OR
 disclosure)):ti,ab,kw,de) OR comprehend:ti,ab,kw
 OR comprehension:ti,ab,kw OR (((care giver*' OR
 caregiver* OR instruction* OR discharge* OR
 diagnos* OR document* OR message* OR option* OR
 medication) NEAR/2 (understand OR understood OR
 understanding)):ti,ab,kw,de) OR 'literacy'/exp OR
 'health literacy'/exp OR 'patient education'/exp
 OR 'consumer health information'/exp OR
 literacy:ti,ab,kw,de OR 'plain
 language':ti,ab,kw,de OR
 conversation*:ti,ab,kw,de OR
 pamphlet*:ti,ab,kw,de OR ((patient* NEAR/3 ('hand
 out*' OR handout*)):ti,ab,kw,de) OR (((caregiver
 OR 'care giver*' OR patient*) NEAR/3 (education
 OR recall)):ti,ab,kw,de) OR ((instruction* NEAR/3
 (discharge* OR return OR caregiver* OR 'care
 giver*' OR patient* OR medication*)):ti,ab,kw,de)
 OR ((medication NEAR/2 knowledge):ti,ab,kw,de) OR
 (((telephone OR phone OR call OR called) NEAR/5
 (followup OR 'follow up' OR
 discharge)):ti,ab,kw,de) OR (((educat* OR nurse
 OR occupational OR geriatric* OR service* OR

appointment*) NEAR/5 (followup OR 'follow up*' OR
 referral)):ti,ab,kw,de) OR ((refer* NEAR/3
 'secondary care'):ti,ab,kw,de) OR (((patient* OR
 caregiver* OR 'care giver*' OR family) NEAR/3
 (contact* OR participation OR engagement OR
 engaging)):ti,ab,kw,de) OR ((perception* NEAR/1
 (patient* OR family OR caregiver* OR 'care
 giver*)):ti,ab,kw,de) OR ((family NEAR/1
 meeting):ti,ab,kw,de) OR 'geriatric
 consultation':ti,ab,kw,de OR 'shared decision
 making'/exp OR 'patient decision making'/exp OR
 'family decision making'/exp OR (('decision
 making' NEAR/2 (shared OR family OR caregiver* OR
 'care giver*' OR patient*)):ti,ab) OR 'hearing
 aid'/exp OR 'amplifier'/exp OR 'auditory
 rehabilitation'/exp OR 'electronic visual
 aid'/exp OR 'optical visual aid'/exp OR (((aid OR
 aids OR magnifier) NEAR/2 (reading OR vision OR
 visual)):ti,ab) OR ((hearing NEAR/2 (amplifier*
 OR aid*)):ti,ab,kw,de) OR ((assistive NEAR/1
 device*):ti) OR ((reading NEAR/1
 glasses):ti,ab,kw,de) OR ((sign NEAR/1
 language):ti,ab,kw,de) OR interpreter:ti,ab,kw,de
 CINAHL CINAHL PICO 1 – 782 results on March 25, 2021
S1 Communication Broad (647,177) (MH "Communication") OR
 (MH "communication barriers") OR (MH "Communication Skills
 Training") OR (MH "Communication Aids for Disabled") OR (MH
 "Assistive Listening Systems") OR (MH "Patient Education") OR (MH
 "Patient Discharge Education") OR (MH "Consumer Health
 Information+") OR communicate*.ti,ab. OR (MH "Amplifiers, Elec-
 tronic, Patient+") OR (MH "Decision Making, Shared") OR (MH "Decision Mak-
 ing, Patient+") OR (MH "Decision Making, Family") OR (TI (teach-back
 OR teachback) OR (information N2 (obtain* OR transfer OR exchange
 OR disclosure)) OR comprehend OR Comprehension OR ((caregiver*
 OR care-giver* OR instruction* OR discharge* OR diagnos* OR docu-
 ment* OR message* OR option* OR medication) N2 (Understand OR
 understood OR understanding)) OR literacy OR Plain-language OR
 Conversation* OR pamphlet* OR (patient* N3 (hand-out* OR
 handout*)) OR ((caregiver* OR care-giver* OR patient*) N3 (education
 OR recall)) OR (instruction* N3 (discharge* OR return OR care-giver*
 OR patient* OR medication*)) OR (knowledge N2 (Medication OR
 drug)) OR ((telephone OR phone OR call OR called) N5 (followup OR
 follow-up OR discharge)) OR ((educat* OR nurse OR occupational OR
 geriatric* OR service* OR appointment*) N5 (followup OR follow-up
 OR referral)) OR (refer* N3 secondary-care) OR ((patient* OR care-
 giver* OR care-giver* OR family) N3 (contact* OR participation OR
 Engagement OR engaging)) OR (perception* N1 (patient* OR family OR
 caregiver* OR care-giver*)) OR (family N1 meeting) OR (geriatric N1
 consultation) OR (decision-making N2 (shared OR family or caregiver*
 OR care-giver* OR patient*)) OR ((aid OR aids) N2 (reading OR vision
 oR visual)) OR (vision N1 magnifier) OR (hearing N2 (amplifier* OR
 aid*)) OR (assistive N1 device*) OR (reading N1 glasses) OR (sign N1
 language) OR interpreter) OR (AB (teach-back OR teachback) OR (in-
 formation N2 (obtain* OR transfer OR exchange OR disclosure)) OR
 comprehend OR Comprehension OR ((caregiver* OR care-giver* OR
 instruction* OR discharge* OR diagnos* OR document* OR message*
 OR option* OR medication) N2 (Understand OR understood OR un-
 derstanding)) OR literacy OR Plain-language OR Conversation* OR
 pamphlet* OR (patient* N3 (hand-out* OR handout*)) OR ((caregiver*
 OR care-giver* OR patient*) N3 (education OR recall)) OR (instruction*
 N3 (discharge* OR return OR care-giver* OR patient* OR medication*))
 OR (knowledge N2 (Medication OR drug)) OR ((telephone OR phone
 OR call OR called) N5 (followup OR follow-up OR discharge)) OR
 ((educat* OR nurse OR occupational OR geriatric* OR service* OR
 appointment*) N5 (followup OR follow-up OR referral)) OR (refer* N3

secondary-care) OR ((patient* OR caregiver* OR care-giver* OR family) N3 (contact* OR participation OR Engagement OR engaging)) OR (perception* N1 (patient* OR family OR caregiver* OR care-giver*)) OR (family N1 meeting) OR (geriatric N1 consultation) OR (decision-making N2 (shared OR family or caregiver* OR care-giver* OR patient*)) OR ((aid OR aids) N2 (reading OR vision OR visual)) OR (vision N1 magnifier) OR (hearing N2 (amplifier* OR aid*)) OR (reading N1 glasses) OR (sign N1 language) OR interpreter)

S2 Cognitive Dysfunction/Dementia - (155,858)(MH "Cognition Disorders") OR (MH "Mild cognitive impairment") OR (MH "Dementia+") OR (TI ((cognitive* or cognition* or neurocogniti* or neuro-cogniti*) N3 (disorder* or defect* or deficit* or disabilit* or dysfunction* or disfunction* or impair* or interference* or decline* or function* or deteriorat*)) OR dementia* or amentia* or dementia* or CADASIL* or Alzheimer* or Creutzfeldt-Jakob or Huntington* or Lewy-Bod*) OR (AB ((cognitive* or cognition* or neurocogniti* or neuro-cogniti*) N3 (disorder* or defect* or deficit* or disabilit* or dysfunction* or disfunction* or impair* or interference* or decline* or function* or deteriorat*)) OR dementia* or amentia* or dementia* or CADASIL* or Alzheimer* or Creutzfeldt-Jakob or Huntington* or Lewy-Bod*)

S3 Emergency Department - (246,339)(MH "Emergency Medical Services") OR (MH "Emergency Service+") OR emergicenter* OR (acute N2 (setting OR care OR ward OR hospital)) OR (trauma N1 (patient* OR center* OR centre* OR department* OR unit* OR room*)) OR ((Emergency OR emergencies) N3 (care OR service* OR dispatch* OR department* OR unit* OR ward* OR room* OR center* OR centre* OR system* OR stay* or admit* or admission* or evaluation* OR assess* OR medicine OR visit* OR Nurs* OR physician* OR patient* OR clinician OR personnel OR accidents)) OR ((EMS OR ED) N3 (care OR service* OR dispatch* OR department* OR unit* OR ward* OR room* OR center* OR centre* OR system* OR stay* or admit* or admission* or evaluation* OR assess* OR visit* OR Nurs* OR physician* OR patient* OR personnel))

S4 Aged—(982,751)

(MH "Aged+") OR (TI (elderly OR elderlies OR centenarian* OR nonagenarian* OR octogenarian* OR septuagenarian* OR sexagenarian* OR geriatric* OR senium*)) OR (senior* N1 citizen*) OR ((older OR frail*) N2 (hospitalized OR hospitalised OR elder* OR patient* OR person* OR inpatient* OR people OR adult*)) OR aged-adult OR aged-adults OR aged-patient OR aged-patients OR (AB (elderly OR elderlies OR centenarian* OR nonagenarian* OR octogenarian* OR septuagenarian* OR sexagenarian* OR geriatric* OR senium*)) OR (senior* N1 citizen*) OR ((older OR frail*) N2 (hospitalized OR hospitalised OR elder* OR patient* OR person* OR inpatient* OR people OR adult*)) OR aged-adult OR aged-adults OR aged-patient OR aged-patients) OR (SO gerontolog* OR geriatric* OR ageing OR aging) OR (MW older-adult OR older-adults)

S1 AND S2 AND S3 AND S4 = 782

PICO 2—276 results on 3/25/21

S1 Communication Broad (647,177)

(MH "Communication") OR (MH "communication barriers") OR (MH "Communication Skills Training") OR (MH "Communication Aids for Disabled") OR (MH "Assistive Listening Systems") OR (MH "Patient Education") OR (MH "Patient Discharge Education") OR (MH "Consumer Health Information+") OR communicat*.ti.ab. OR (MH "Amplifiers, Electronic") OR (MH "Decision Making, Shared") OR (MH "Decision Making, Patient+") OR (MH "Decision Making, Family") OR (TI (teach-back OR teachback) OR (information N2 (obtain* OR transfer OR exchange OR disclosure)) OR comprehend OR Comprehension OR ((caregiver* OR care-giver* OR instruction* OR discharge* OR diagnos* OR document* OR message* OR option* OR medication) N2 (Understand OR understood OR understanding)) OR literacy OR Plain-language OR Conversation* OR pamphlet* OR (patient* N3 (hand-out* OR handout*)) OR ((caregiver* OR care-giver* OR patient*) N3 (education OR recall)) OR (instruction* N3 (discharge* OR return

OR care-giver* OR patient* OR medication*)) OR (knowledge N2 (Medication OR drug)) OR ((telephone OR phone OR call OR called) N5 (followup OR follow-up OR discharge)) OR ((educat* OR nurse OR occupational OR geriatric* OR service* OR appointment*) N5 (followup OR follow-up OR referral)) OR (refer* N3 secondary-care) OR ((patient* OR caregiver* OR care-giver* OR family) N3 (contact* OR participation OR Engagement OR engaging)) OR (perception* N1 (patient* OR family OR caregiver* OR care-giver*)) OR (family N1 meeting) OR (geriatric N1 consultation) OR (decision-making N2 (shared OR family or caregiver* OR care-giver* OR patient*)) OR ((aid OR aids) N2 (reading OR vision OR visual)) OR (vision N1 magnifier) OR (hearing N2 (amplifier* OR aid*)) OR (assistive N1 device*) OR (reading N1 glasses) OR (sign N1 language) OR interpreter) OR (AB (teach-back OR teachback) OR (information N2 (obtain* OR transfer OR exchange OR disclosure)) OR comprehend OR Comprehension OR ((caregiver* OR care-giver* OR instruction* OR discharge* OR diagnos* OR document* OR message* OR option* OR medication) N2 (Understand OR understood OR understanding)) OR literacy OR Plain-language OR Conversation* OR pamphlet* OR (patient* N3 (hand-out* OR handout*)) OR ((caregiver* OR care-giver* OR patient*) N3 (education OR recall)) OR (instruction* N3 (discharge* OR return OR care-giver* OR patient* OR medication*)) OR (knowledge N2 (Medication OR drug)) OR ((telephone OR phone OR call OR called) N5 (followup OR follow-up OR discharge)) OR ((educat* OR nurse OR occupational OR geriatric* OR service* OR appointment*) N5 (followup OR follow-up OR referral)) OR (refer* N3 secondary-care) OR ((patient* OR caregiver* OR care-giver* OR family) N3 (contact* OR participation OR Engagement OR engaging)) OR (perception* N1 (patient* OR family OR caregiver* OR care-giver*)) OR (family N1 meeting) OR (geriatric N1 consultation) OR (decision-making N2 (shared OR family or caregiver* OR care-giver* OR patient*)) OR ((aid OR aids) N2 (reading OR vision OR visual)) OR (vision N1 magnifier) OR (hearing N2 (amplifier* OR aid*)) OR (reading N1 glasses) OR (sign N1 language) OR interpreter)

S2 Cognitive Dysfunction/Dementia - (155,858)(MH "Cognition Disorders") OR (MH "Mild cognitive impairment") OR (MH "Dementia+") OR (TI ((cognitive* or cognition* or neurocogniti* or neuro-cogniti*) N3 (disorder* or defect* or deficit* or disabilit* or dysfunction* or disfunction* or impair* or interference* or decline* or function* or deteriorat*)) OR dementia* or amentia* or dementia* or CADASIL* or Alzheimer* or Creutzfeldt-Jakob or Huntington* or Lewy-Bod*) OR (AB ((cognitive* or cognition* or neurocogniti* or neuro-cogniti*) N3 (disorder* or defect* or deficit* or disabilit* or dysfunction* or disfunction* or impair* or interference* or decline* or function* or deteriorat*)) OR dementia* or amentia* or dementia* or CADASIL* or Alzheimer* or Creutzfeldt-Jakob or Huntington* or Lewy-Bod*)

S3 Emergency Department - (246,339)(MH "Emergency Medical Services") OR (MH "Emergency Service+") OR emergicenter* OR (acute N2 (setting OR care OR ward OR hospital)) OR (trauma N1 (patient* OR center* OR centre* OR department* OR unit* OR room*)) OR ((Emergency OR emergencies) N3 (care OR service* OR dispatch* OR department* OR unit* OR ward* OR room* OR center* OR centre* OR system* OR stay* or admit* or admission* or evaluation* OR assess* OR medicine OR visit* OR Nurs* OR physician* OR patient* OR clinician OR personnel OR accidents)) OR ((EMS OR ED) N3 (care OR service* OR dispatch* OR department* OR unit* OR ward* OR room* OR center* OR centre* OR system* OR stay* or admit* or admission* or evaluation* OR assess* OR visit* OR Nurs* OR physician* OR patient* OR personnel))

S6 Discharge—(89,354) (MH "Patient Discharge Education") OR (MH "Patient Discharge") OR (MH "Discharge Planning") OR (MH "Early Patient Discharge") OR (TI discharge OR discharged) OR (AB discharge OR discharged)

S1 AND S2 AND S3 AND S6 = 276

PsycInfo

PICO 1 432 on March 25, 2021

S1 Communication Broad (516,644)

(TI (teach-back OR teachback) OR (information N2 (obtain* OR transfer OR exchange OR disclosure)) OR comprehend OR Comprehension OR ((caregiver* OR care-giver* OR instruction* OR discharge* OR diagnos* OR document* OR message* OR option* OR medication) N2 (Understand OR understood OR understanding)) OR literacy OR Plain-language OR Conversation* OR pamphlet* OR (patient* N3 (hand-out* OR handout*)) OR ((caregiver* OR care-giver* OR patient*) N3 (education OR recall)) OR (instruction* N3 (discharge* OR return OR care-giver* OR patient* OR medication*)) OR (knowledge N2 (Medication OR drug)) OR ((telephone OR phone OR call OR called) N5 (followup OR follow-up OR discharge)) OR ((educat* OR nurse OR occupational OR geriatric* OR service* OR appointment*) N5 (followup OR follow-up OR referral)) OR (refer* N3 secondary-care) OR ((patient* OR caregiver* OR care-giver* OR family) N3 (contact* OR participation OR Engagement OR engaging)) OR (perception* N1 (patient* OR family OR caregiver* OR care-giver*)) OR (family N1 meeting) OR (geriatric N1 consultation) OR (decision-making N2 (shared OR family or caregiver* OR care-giver* OR patient*)) OR ((aid OR aids) N2 (reading OR vision OR visual)) OR (vision N1 magnifier) OR (hearing N2 (amplifier* OR aid*)) OR (assistive N1 device*) OR (reading N1 glasses) OR (sign N1 language) OR interpreter) OR (AB (teach-back OR teachback) OR (information N2 (obtain* OR transfer OR exchange OR disclosure)) OR comprehend OR Comprehension OR ((caregiver* OR care-giver* OR instruction* OR discharge* OR diagnos* OR document* OR message* OR option* OR medication) N2 (Understand OR understood OR understanding)) OR literacy OR Plain-language OR Conversation* OR pamphlet* OR (patient* N3 (hand-out* OR handout*)) OR ((caregiver* OR care-giver* OR patient*) N3 (education OR recall)) OR (instruction* N3 (discharge* OR return OR care-giver* OR patient* OR medication*)) OR (knowledge N2 (Medication OR drug)) OR ((telephone OR phone OR call OR called) N5 (followup OR follow-up OR discharge)) OR ((educat* OR nurse OR occupational OR geriatric* OR service* OR appointment*) N5 (followup OR follow-up OR referral)) OR (refer* N3 secondary-care) OR ((patient* OR caregiver* OR care-giver* OR family) N3 (contact* OR participation OR Engagement OR engaging)) OR (perception* N1 (patient* OR family OR caregiver* OR care-giver*)) OR (family N1 meeting) OR (geriatric N1 consultation) OR (decision-making N2 (shared OR family or caregiver* OR care-giver* OR patient*)) OR ((aid OR aids) N2 (reading OR vision OR visual)) OR (vision N1 magnifier) OR (hearing N2 (amplifier* OR aid*)) OR (reading N1 glasses) OR (sign N1 language) OR interpreter)

S2 Cognitive Dysfunction/Dementia—(218,070)DE "Cognitive Impairment" OR DE "Mild Cognitive Impairment" OR DE "Dementia" OR (TI ((cognitive* OR cognition* OR neurocogniti* OR neuro-cogniti*) N3 (disorder* OR defect* OR deficit* OR disabilit* OR dysfunction* OR disfunction* OR impair* OR interference* OR decline* OR function* OR deteriorat*)) OR dementia* OR amentia* OR demention* OR CADASIL* OR Alzheimer* OR Creutzfeldt-Jakob OR Huntington* OR Lewy-Bod*) OR (AB ((cognitive* OR cognition* OR neurocogniti* OR neuro-cogniti*) N3 (disorder* OR defect* OR deficit* OR disabilit* OR dysfunction* OR disfunction* OR impair* OR interference* OR decline* OR function* OR deteriorat*)) OR dementia* OR amentia* OR demention* OR CADASIL* OR Alzheimer* OR Creutzfeldt-Jakob OR Huntington* OR Lewy-Bod*)

S3 Emergency Department—(43,278) DE "Emergency Services" OR DE "Emergency Medicine" OR DE "Emergency Personnel" OR (TI emergicenter* OR (acute N2 (setting OR care OR ward OR hospital)) OR (trauma N1 (patient* OR center* OR centre* OR department* OR unit* OR room*)) OR ((Emergency OR emergencies) N3 (care OR service* OR dispatch* OR department* OR unit* OR ward* OR room* OR center* OR centre* OR system* OR stay* OR admit* OR admission* OR evaluation* OR assess* OR medicine OR visit* OR Nurs* OR physician* OR patient* OR clinician OR personnel OR accidents)) OR ((EMS OR ED) N3 (care OR

service* OR dispatch* OR department* OR unit* OR ward* OR room* OR center* OR centre* OR system* OR stay* OR admit* OR admission* OR evaluation* OR assess* OR visit* OR Nurs* OR physician* OR patient* OR personnel)) OR (AB emergicenter* OR (acute N2 (setting OR care OR ward OR hospital)) OR (trauma N1 (patient* OR center* OR centre* OR department* OR unit* OR room*)) OR ((Emergency OR emergencies) N3 (care OR service* OR dispatch* OR department* OR unit* OR ward* OR room* OR center* OR centre* OR system* OR stay* OR admit* OR admission* OR evaluation* OR assess* OR medicine OR visit* OR Nurs* OR physician* OR patient* OR clinician OR personnel OR accidents)) OR ((EMS OR ED) N3 (care OR service* OR dispatch* OR department* OR unit* OR ward* OR room* OR center* OR centre* OR system* OR stay* OR admit* OR admission* OR evaluation* OR assess* OR visit* OR Nurs* OR physician* OR patient* OR personnel))

S4 Aged—(446,837)

AG aged OR DE "Elder Care" OR DE "Gerontology" OR DE "Geriatrics" OR (TI (elderly OR elderlies OR centenarian* OR nonagenarian* OR octogenarian* OR septuagenarian* OR sexagenarian* OR geriatric* OR senium*) OR (senior* N1 citizen*) OR ((older OR frail*) N2 (hospitalized OR hospitalised OR elder* OR patient* OR person* OR inpatient* OR people OR adult*)) OR aged-adult OR aged-adults OR aged-patient OR aged-patients) OR (AB (elderly OR elderlies OR centenarian* OR nonagenarian* OR octogenarian* OR septuagenarian* OR sexagenarian* OR geriatric* OR senium*) OR (senior* N1 citizen*) OR ((older OR frail*) N2 (hospitalized OR hospitalised OR elder* OR patient* OR person* OR inpatient* OR people OR adult*)) OR aged-adult OR aged-adults OR aged-patient OR aged-patients) OR (SO gerontolog* OR geriatric* OR ageing OR aging) OR (KW older-adult OR older-adults)

S1 AND S2 AND S3 AND S4 = 432

PICO 2103 on 3/25/21

S1 Communication Broad (516,644)

(TI (teach-back OR teachback) OR (information N2 (obtain* OR transfer OR exchange OR disclosure)) OR comprehend OR Comprehension OR ((caregiver* OR care-giver* OR instruction* OR discharge* OR diagnos* OR document* OR message* OR option* OR medication) N2 (Understand OR understood OR understanding)) OR literacy OR Plain-language OR Conversation* OR pamphlet* OR (patient* N3 (hand-out* OR handout*)) OR ((caregiver* OR care-giver* OR patient*) N3 (education OR recall)) OR (instruction* N3 (discharge* OR return OR care-giver* OR patient* OR medication*)) OR (knowledge N2 (Medication OR drug)) OR ((telephone OR phone OR call OR called) N5 (followup OR follow-up OR discharge)) OR ((educat* OR nurse OR occupational OR geriatric* OR service* OR appointment*) N5 (followup OR follow-up OR referral)) OR (refer* N3 secondary-care) OR ((patient* OR caregiver* OR care-giver* OR family) N3 (contact* OR participation OR Engagement OR engaging)) OR (perception* N1 (patient* OR family OR caregiver* OR care-giver*)) OR (family N1 meeting) OR (geriatric N1 consultation) OR (decision-making N2 (shared OR family or caregiver* OR care-giver* OR patient*)) OR ((aid OR aids) N2 (reading OR vision OR visual)) OR (vision N1 magnifier) OR (hearing N2 (amplifier* OR aid*)) OR (assistive N1 device*) OR (reading N1 glasses) OR (sign N1 language) OR interpreter) OR (AB (teach-back OR teachback) OR (information N2 (obtain* OR transfer OR exchange OR disclosure)) OR comprehend OR Comprehension OR ((caregiver* OR care-giver* OR instruction* OR discharge* OR diagnos* OR document* OR message* OR option* OR medication) N2 (Understand OR understood OR understanding)) OR literacy OR Plain-language OR Conversation* OR pamphlet* OR (patient* N3 (hand-out* OR handout*)) OR ((caregiver* OR care-giver* OR patient*) N3 (education OR recall)) OR (instruction* N3 (discharge* OR return OR care-giver* OR patient* OR medication*)) OR (knowledge N2 (Medication OR drug)) OR ((telephone OR phone OR call OR called) N5 (followup OR follow-up OR discharge)) OR ((educat* OR nurse OR occupational OR geriatric* OR service* OR appointment*) N5

(followup OR follow-up OR referral)) OR (refer* N3 secondary-care) OR ((patient* OR caregiver* OR care-giver* OR family) N3 (contact* OR participation OR Engagement OR engaging)) OR (perception* N1 (patient* OR family OR caregiver* OR care-giver*)) OR (family N1 meeting) OR (geriatric N1 consultation) OR (decision-making N2 (shared OR family or caregiver* OR care-giver* OR patient*)) OR ((aid OR aids) N2 (reading OR vision OR visual)) OR (vision N1 magnifier) OR (hearing N2 (amplifier* OR aid*)) OR (reading N1 glasses) OR (sign N1 language) OR interpreter)

S2 Cognitive Dysfunction/Dementia—(218,070)DE "Cognitive Impairment" OR DE "Mild Cognitive Impairment" OR DE "Dementia" OR (TI ((cognitive* or cognition* or neurocogniti* or neuro-cogniti*) N3 (disorder* or defect* or deficit* or disabilit* or dysfunction* or disfunction* or impair* or interference* or decline* or function* or deteriorat*)) OR dementia* or amentia* or demention* or CADASIL* or Alzheimer* or Creutzfeldt-Jakob or Huntington* or Lewy-Bod*) OR (AB ((cognitive* or cognition* or neurocogniti* or neuro-cogniti*) N3 (disorder* or defect* or deficit* or disabilit* or dysfunction* or disfunction* or impair* or interference* or decline* or function* or deteriorat*)) OR dementia* or amentia* or demention* or CADASIL* or Alzheimer* or Creutzfeldt-Jakob or Huntington* or Lewy-Bod*)

S3 Emergency Department—(43,278) DE "Emergency Services" OR DE "Emergency Medicine" OR DE "Emergency Personnel" OR (TI emergencenter* OR (acute N2 (setting OR care OR ward OR hospital)) OR (trauma N1 (patient* OR center* OR centre* OR department* OR unit* OR room*)) OR ((Emergency OR emergencies) N3 (care OR service* OR dispatch* OR department* OR unit* OR ward* OR room* OR center* OR centre* OR system* OR stay* or admit* or admission* or evaluation* OR assess* OR medicine OR visit* OR Nurs* OR physician* OR patient* OR clinician OR personnel OR accidents)) OR ((EMS OR ED) N3 (care OR service* OR dispatch* OR department* OR unit* OR ward* OR room* OR center* OR centre* OR system* OR stay* or admit* or admission* or evaluation* OR assess* OR medicine OR visit* OR Nurs* OR physician* OR patient* OR personnel))) OR (AB emergencenter* OR (acute N2 (setting OR care OR ward OR hospital)) OR (trauma N1 (patient* OR center* OR centre* OR department* OR unit* OR room*)) OR ((Emergency OR emergencies) N3 (care OR service* OR dispatch* OR department* OR unit* OR ward* OR room* OR center* OR centre* OR system* OR stay* or admit* or admission* or evaluation* OR assess* OR medicine OR visit* OR Nurs* OR physician* OR patient* OR clinician OR personnel OR accidents)) OR ((EMS OR ED) N3 (care OR service* OR dispatch* OR department* OR unit* OR ward* OR room* OR center* OR centre* OR system* OR stay* or admit* or admission* or evaluation* OR assess* OR medicine OR visit* OR Nurs* OR physician* OR patient* OR personnel)))

S6 Discharge—(37,321)

DE "Hospital Discharge" OR DE "Discharge Planning" OR (TI discharge OR discharged) OR (AB discharge OR discharged)

S1 AND S2 AND S3 AND S6 = 103

Cochrane Central

PICO 1—371 results on 03/25/21 PICO 2 - 188 results on 03/25/21

1. Communication 999917 teach-back:ti,ab,kw OR communication:ti,ab,kw OR 'patient education':ti,ab,kw OR (medication* near/2 (knowledge OR understand)):ti,ab,kw OR teach-back:ti,ab,kw OR (information near/2 (obtain* OR transfer OR exchange OR disclosure)):ti,ab,kw OR comprehend:ti,ab,kw OR Comprehension:ti,ab,kw OR ((caregiver* OR instruction* OR discharge* OR diagnosis* OR document* OR message* OR option* OR medication) near/2 (Understand OR understood OR understanding)):ti,ab,kw OR 'Plain language':ti,ab,kw OR Conversation*:ti,ab,kw OR pamphlet*:ti,ab,kw OR (patient* near/3 (handout*)):ti,ab,kw OR ((caregiver OR patient*) near/3 (education OR recall)):ti,ab,kw OR (instruction* near/3 (discharge* OR return OR caregiver* OR caregiver* OR patient* OR medication*)):ti,ab,kw OR (Medication near/2 knowledge):ti,ab,kw OR ((educat* OR nurse OR occupational OR geriatric* OR service* OR appointment*) NEAR/5 (followup OR

referral)):ti,ab,kw OR (refer* near/3 'secondary care'):ti,ab,kw OR ((patient* OR caregiver* OR family) near/3 (contact* OR participation OR Engagement OR engaging)):ti,ab,kw OR (perception* near/1 (patient* OR family OR caregiver*)):ti,ab,kw OR (family near/1 meeting):ti,ab,kw OR 'geriatric consultation':ti,ab,kw OR (decision-making near/2 (shared OR family or caregiver* OR care-giver* OR patient*)):ti,ab

2. Cognitive Dysfunction 45753((cognitive* or cognition* or neurocogniti* or neuro-cogniti*) near/3 (disorder* or defect* or deficit* or disabilit* or dysfunction* or disfunction* or impair* or interference* or decline* or function* or deteriorat*)):ti,ab,kw OR (dementia* or amentia* or demention* or CADASIL* or Alzheimer* or Creutzfeldt-Jakob or Huntington* or Lewy-Bod*):ti,ab,kw

3. Emergency Department 28198 emergencenter*:ti,ab,kw OR (acute NEAR/2 (setting OR care OR ward OR hospital)):ti,ab OR ((trauma NEAR/1 (patient* OR center* OR centre* OR department* OR unit* OR room*)):ti,ab) OR ((Emergency OR emergencies) near/3 (care OR service* OR dispatch* OR department* OR unit* OR ward* OR room* OR center* OR centre* OR system* OR stay* or admit* or admission* or evaluation* OR assess* OR medicine OR visit* OR Nurs* OR physician* OR clinician* OR personnel OR patient* OR accident-s)):ti,ab,kw OR ((EMS OR ED OR ER) near/3 (care OR service* OR dispatch* OR department* OR unit* OR ward* OR room* OR center* OR centre* OR system* OR stay* or admit* or admission* or evaluation* OR assess* OR visit* OR Nurs* OR physician* OR patient* OR personnel)):ti,ab,kw

4. Older Adults 520177 aged:kw OR (elderly OR elderlies OR centenarian* OR nonagenarian* OR octogenarian* OR septuagenarian* OR sexagenarian* OR geriatric* OR senium*):ti,ab,kw OR (senior* near/1 citizen*):ti,ab,kw OR ((older OR frail*) near/2 (hospitalized OR hospitalised OR elder* OR patient* OR person* OR inpatient* OR people OR adult*)):ti,ab,kw OR 'aged adult':ti,ab,kw OR 'aged adult-s':ti,ab,kw OR 'aged patient':ti,ab,kw OR 'aged patients':ti,ab,kw

5. Hospital Discharge 37423 discharge:ti,ab,kw OR discharged:ti,ab,kw

6. 1 and 2 and 3 and 4 382

7. 6 Restricted to Trials 371

8. 1 and 2 and 3 and 5 192

9. 8 Restricted to Trials 188

Web of Science

PICO 1- 35 results on 03/25/21

1. Communication broad

(TI= (communicat*)) OR (AB= (communicat*)) OR (TS= ((teach-back OR teachback) OR (information near/2 (obtain* OR transfer OR exchange OR disclosure)) OR Comprehension OR ((care-giver* OR caregiver* OR instruction* OR discharge* OR diagnos* OR document* OR message* OR option* OR medication) near/3 (comprehend OR Understand OR understood OR understanding)) OR "Plain language" OR pamphlet* OR (patient* near/3 (hand-out* OR handout*)) OR ((caregiver OR care-giver* OR patient*) near/3 (education OR recall)) OR (instruction* near/3 (discharge* OR return OR caregiver* OR caregiver* OR patient* OR medication*)) OR (Medication near/2 knowledge) OR ((telephone OR phone OR call OR called) near/5 (followup OR follow-up OR discharge)) OR(educat* OR nurse OR occupational OR geriatric* OR service* OR appointment*) NEAR/5 (followup OR follow-up* OR referral)) OR (refer* near/3 "secondary care") OR ((patient* OR caregiver* OR care-giver* OR family) near/3 (contact* OR participation OR Engagement OR engaging)) OR (perception* near/1 (patient* OR family OR caregiver* OR care-giver*)) OR (family near/1 meeting) OR "geriatric consultation" OR (decision-making near/2 (shared OR family or caregiver* OR care-giver* OR patient*)) OR ((aid OR aids OR magnifier) near/2 (reading OR vision OR visual)) OR (hearing near/2 (amplifier* OR aid*)) OR (reading near/1 glasses) OR (sign near/1 language) OR interpreter)

2. Cognitive Impairment

(TS= (dementia* OR amentia* OR dementia* OR CADASIL* OR Alzheimer* OR Creutzfeldt-Jakob OR Huntington* OR Lewy-Bod*)) OR (TS= ((cognitive* OR cognition* OR neurocogniti* OR neuro-cogniti*) near/3 (disORDER* OR defect* OR deficit* OR disabilit* OR dysfunction* OR disfunction* OR impair* OR interference* OR decline* OR function* OR deteriORat*))

3. Emergency Department

(TS= (emergicenter* OR (acute NEAR/2 (setting OR care OR ward OR hospital)) OR ((trauma NEAR/1 (patient* OR center* OR centre* OR department* OR unit* OR room*)) OR ((Emergency OR emergencies) near/3 (care OR service* OR dispatch* OR department* OR unit* OR ward* OR room* OR center* OR centre* OR system* OR stay* or admit* or admission* or evaluation* OR assess* OR medicine OR visit* OR Nurs* OR physician* OR clinician* OR personnel OR patient* OR accidents)) OR ((EMS OR ED OR ER) near/3 (care OR service* OR dispatch* OR department* OR unit* OR ward* OR room* OR center* OR centre* OR system* OR stay* or admit* or admission* or evaluation* OR assess* OR visit* OR Nurs* OR physician* OR patient* OR personnel))))

4. Aged

(AK= (Aged)) OR (TS= (elderly OR elderlies OR centenarian* OR nonagenarian* OR octogenarian* OR septuagenarian* OR sexagenarian* OR geriatric* OR senium* OR (senior* near/1 citizen*) OR ((older OR frail*) near/2 (hospitalized OR hospitalised OR elder* OR patient* OR person* OR inpatient* OR people OR adult*)) OR "aged adult" OR "aged adults" OR "aged patient" OR "aged patients")) OR (SO= (gerontolog* OR geriatric* OR ageing OR aging))

1 and 2 and 3 and 4 = 35

PICO 2 – 143 results on 3/25/21

1. Communication broad

(TI= (communicat*)) OR (AB= (communicat*)) OR (TS= ((teach-back OR teachback) OR (information near/2 (obtain* OR transfer OR exchange OR disclosure)) OR Comprehension OR ((care-giver* OR caregiver* OR instruction* OR discharge* OR diagnos* OR document* OR message* OR option* OR medication) near/3 (comprehend OR Understand OR understood OR understanding)) OR "Plain language" OR pamphlet* OR (patient* near/3 (hand-out* OR handout*)) OR ((caregiver OR care-giver* OR patient*) near/3 (education OR recall)) OR (instruction* near/3 (discharge* OR return OR caregiver* OR care-giver* OR patient* OR medication*)) OR (Medication near/2 knowledge) OR ((telephone OR phone OR call OR called) near/5 (followup OR follow-up OR discharge)) OR((educat* OR nurse OR occupational OR geriatric* OR service* OR appointment*) NEAR/5 (followup OR follow-up* OR referral)) OR (refer* near/3 "secondary care") OR ((patient* OR caregiver* OR care-giver* OR family) near/3 (contact* OR participation OR Engagement OR engaging)) OR (perception* near/1 (patient* OR family OR caregiver* OR care-giver*)) OR (family near/1 meeting) OR "geriatric consultation" OR (decision-making near/2 (shared OR family or caregiver* OR care-giver* OR patient*)) OR ((aid OR aids OR magnifier) near/2 (reading OR vision OR visual)) OR (hearing near/2 (amplifier* OR aid*)) OR (reading near/1 glasses) OR (sign near/1 language) OR interpretor))

2. Cognitive Impairment

(TS= (dementia* OR amentia* OR dementia* OR CADASIL* OR Alzheimer* OR Creutzfeldt-Jakob OR Huntington* OR Lewy-Bod*)) OR (TS= ((cognitive* OR cognition* OR neurocogniti* OR neuro-cogniti*) near/3 (disORDER* OR defect* OR deficit* OR disabilit* OR dysfunction* OR disfunction* OR impair* OR interference* OR decline* OR function* OR deteriORat*))

3. Emergency Department

(TS= (emergicenter* OR (acute NEAR/2 (setting OR care OR ward OR hospital)) OR ((trauma NEAR/1 (patient* OR center* OR centre* OR department* OR unit* OR room*)) OR ((Emergency OR emergencies) near/3 (care OR service* OR dispatch* OR department* OR unit* OR ward* OR room* OR center* OR centre* OR system* OR stay* or admit* or admission* or evaluation* OR assess* OR medicine OR visit* OR

Nurs* OR physician* OR clinician* OR personnel OR patient* OR accidents)) OR ((EMS OR ED OR ER) near/3 (care OR service* OR dispatch* OR department* OR unit* OR ward* OR room* OR center* OR centre* OR system* OR stay* or admit* or admission* or evaluation* OR assess* OR visit* OR Nurs* OR physician* OR patient* OR personnel))))

4. Hospital Discharge

(TS= (discharge OR discharged))

5. 1 and 2 and 3 and 6 = 143

PubMed Central

PICO 1–23 Results on 03/25/21

1. Communication Broad–273,442

communicat*[tiab] OR teach-back[tiab] OR teachback[tiab] OR "information transfer"[tiab] OR "obtain information"[tiab] OR "information exchange"[tiab] OR "information disclosure"[tiab] comprehend[tiab] OR Comprehension[tiab] OR "understand instructions"[tiab] OR literacy[tiab] OR "Plain language"[tiab] OR Conversation*[tiab] OR pamphlet*[tiab] OR "patient handout"[tiab] OR "patient education"[tiab] OR "medication knowledge"[tiab] OR "drug knowledge"[tiab] OR "patient referral"[tiab] OR "occupational therapy"[tiab] OR "geriatric referral"[tiab] OR "followup appointment"[tiab] OR "follow-up appointment"[tiab] OR "referral to secondary care"[tiab] OR "patient engagement"[tiab] OR "family engagement"[tiab] OR "caregiver engagement"[tiab] OR "family meeting"[tiab] OR "geriatric consultation"[tiab] OR "shared decision making"[tiab] OR "family decision making"[tiab] OR "caregiver decision making"[tiab] OR "patient decision making"[tiab] OR amplifier or amplifiers OR "vision aid"[tiab] OR "reading glasses"[tiab] OR "sign language"[tiab] OR interpretor[tiab]

2. Cognitive Dysfunction OR Dementia–275,280

"Cognitive Dysfunction"[tiab] OR "neurocognitive dysfunction"[tiab] OR "Cognitive impairment"[tiab] OR "neurocognitive impairment"[tiab] OR dementia*[tiab] OR amentia[tiab] OR alzheimer*[tiab]

3. Aged–3,367,537

"Aged"[mesh] OR elderly[tiab] OR elderlies[tiab] OR centenarian*[tiab] OR nonagenarian*[tiab] OR octogenarian*[tiab] OR septuagenarian*[tiab] OR sexagenarian*[tiab] OR geriatric*[tiab] OR senium*[tiab] OR "senior citizens"[tiab] OR "older patients"[tiab] OR "older persons"[tiab] OR "older adult"[tiab] OR "older adults"[tiab] OR "frail elderly"[tiab] OR "older hospitalized"[tiab] OR "older hospitalised"[tiab] OR "older inpatients"[tiab] OR "aged adult"[tiab] OR "aged adults"[tiab] OR "aged patient"[tiab] OR "aged patients"[tiab] OR gerontolog*[Journal] OR geriatric*[Journal] OR aging[Journal]

4. Emergency Department–258,275

"Emergency Service, Hospital"[Mesh] OR "Emergency Medical Services"[mesh] OR emergicenter*[tiab] OR "acute care"[tiab] OR "acute hospital"[tiab] OR "trauma center"[tiab] OR "trauma department"[tiab] OR "trauma center" [tiab] OR "trauma centre"[tiab] OR "trauma unit"[tiab] OR "emergency Care"[tiab] OR "emergency service"[tiab] OR "emergency department"[tiab] OR "emergency departments"[tiab] OR "emergency center"[tiab] OR "emergency centre"[tiab] OR "emergency ward"[tiab] OR "emergency wards"[tiab] OR "emergency medicine"[tiab] OR "ED care"[tiab] OR "emergency room"[tiab] OR "EMS care"[tiab]

5. 1 and 2 and 3 and 4 = 73 results

6. 5 NOT (medline[Filter]) = 23 results

PICO 2–5 results

1. Communication Broad–273,442

communicat*[tiab] OR teach-back[tiab] OR teachback[tiab] OR "information transfer"[tiab] OR "obtain information"[tiab] OR "information exchange"[tiab] OR "information disclosure"[tiab] comprehend[tiab] OR Comprehension[tiab] OR "understand instructions"[tiab] OR literacy[tiab] OR "Plain language"[tiab] OR Conversation*[tiab] OR pamphlet*[tiab] OR "patient handout"[tiab] OR "patient education"[tiab] OR "medication knowledge"[tiab] OR "drug knowledge"[tiab] OR "patient referral"[tiab] OR "occupational

therapy"[tiab] OR "geriatric referral"[tiab] OR "followup appointment"[tiab] OR "follow-up appointment"[tiab] OR "referral to secondary care"[tiab] OR "patient engagement"[tiab] OR "family engagement"[tiab] OR "caregiver engagement"[tiab] OR "family meeting"[tiab] OR "geriatric consultation"[tiab] OR "shared decision making"[tiab] OR "family decision making"[tiab] OR "caregiver decision making"[tiab] OR "patient decision making"[tiab] OR amplifier or amplifiers OR "vision aid"[tiab] OR "reading glasses"[tiab] OR "sign language"[tiab] OR interpreter[tiab]

2. Cognitive Dysfunction OR Dementia—275,280

"Cognitive Dysfunction"[tiab] OR "neurocognitive dysfunction"[tiab] OR "Cognitive impairment"[tiab] OR "neurocognitive impairment"[tiab] OR dementia*[tiab] OR amnesia[tiab] OR alzheimer*[tiab]

3. Discharge—255,440 Discharge[tiab] OR discharged[tiab]

4. Emergency Department—258,275

"Emergency Service, Hospital"[Mesh] OR "Emergency Medical Services"[mesh] OR emergencenter*[tiab] OR "acute care"[tiab] OR "acute hospital"[tiab] OR "trauma center"[tiab] OR "trauma department"[tiab] OR "trauma center" [tiab] OR "trauma centre"[tiab] OR "trauma unit"[tiab] OR "emergency Care"[tiab] OR "emergency service"[tiab] OR "emergency department"[tiab] OR "emergency departments"[tiab] OR "emergency center"[tiab] OR "emergency centre"[tiab] OR "emergency ward"[tiab] OR "emergency wards"[tiab] OR "emergency medicine"[tiab] OR "ED care"[tiab] OR "emergency room"[tiab] OR "EMS care"[tiab]

5. 1 and 2 and 3 and 4 = 23 results

6. 5 NOT (medline[Filter]) = 5 results

Proquest Global Theses and Dissertations PICO 1–6 results on March 25

noft((elderly OR elderlies OR centenarian* OR nonagenarian* OR octogenarian* OR septuagenarian* OR sexagenarian* OR geriatric* OR

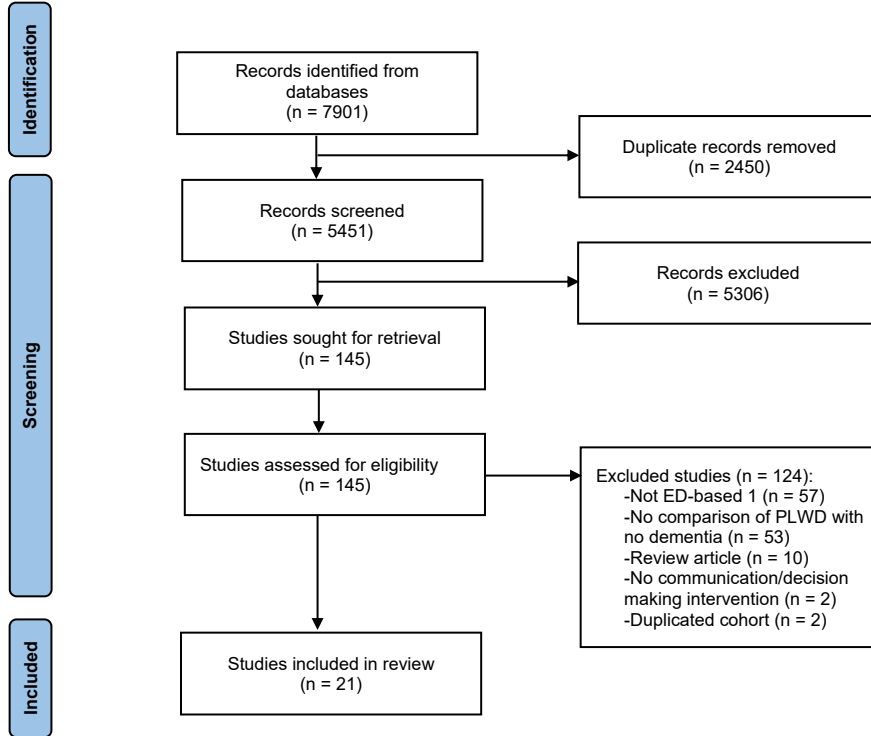
senium* OR (senior* NEAR/1 citizen*) OR ((older OR frail*) NEAR/2 (hospitalized OR hospitalised OR elder* OR patient* OR person* OR inpatient* OR people OR adult*)) OR "aged adult" OR "aged adults" OR "aged patient" OR "aged patients") AND (dementia* OR Alzheimer* OR ((cognitive* OR cognition* OR neurocogniti* OR neuro-cogniti*) NEAR/3 (disOrder* OR dysfunction* OR impair*))) AND (communication OR "patient education" OR "shared decision making" OR comprehension OR (instruction* near/3 (discharge* OR return OR caregiver* OR caregiver* OR patient* OR medication*)) OR (Medication near/2 knowledge)) AND ((acute NEAR/2 (setting OR care OR ward OR hospital)) OR ((Emergency OR emergencies) near/3 (care OR service* OR dispatch* OR department* OR unit* OR ward* OR room* OR center* OR centre* OR system* OR stay* or admit* or admission* or evaluation* OR assess* OR medicine OR visit* OR Nurs* OR physician* OR clinician* OR personnel OR patient* OR accidents))))

PICO 1–3 results on March 25

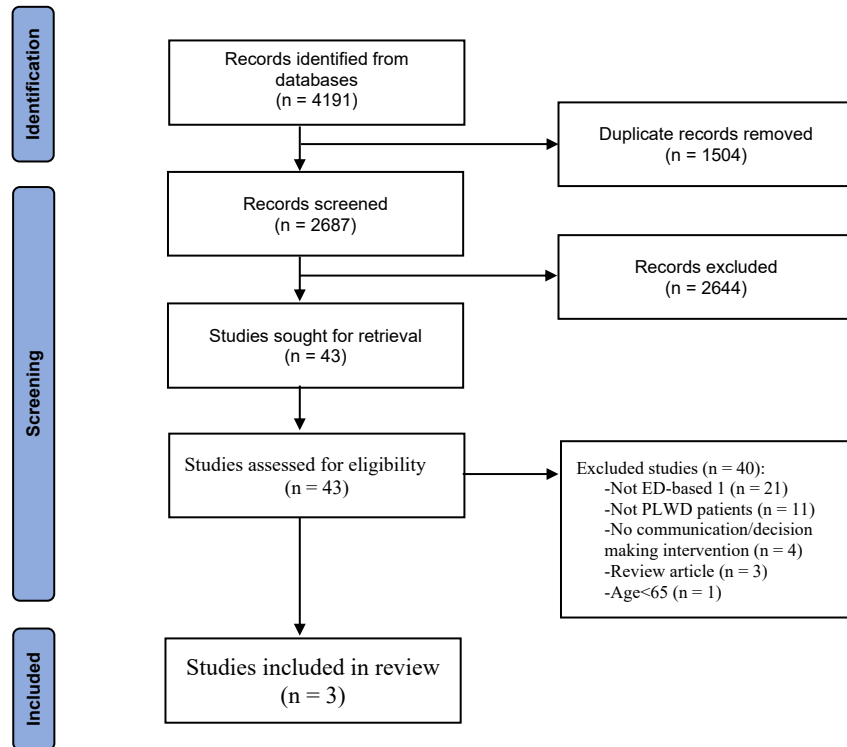
Noft((discharge OR discharged) AND (dementia* OR Alzheimer* OR ((cognitive* OR cognition* OR neurocogniti* OR neuro-cogniti*) NEAR/3 (disOrder* OR dysfunction* OR impair*))) AND (communication OR "patient education" OR "shared decision making" OR comprehension OR (instruction* near/3 (discharge* OR return OR caregiver* OR caregiver* OR patient* OR medication*)) OR ((aid OR aids OR magnifier) near/2 (reading OR vision)) OR ((educat* OR nurse OR occupational OR geriatric* OR service* OR appointment*) NEAR/5 (followup OR follow-up* OR referral)) OR (hearing near/2 amplifier*) OR (Medication near/2 knowledge)) AND ((acute NEAR/2 (setting OR care OR ward OR hospital)) OR ((Emergency OR emergencies) near/3 (care OR service* OR dispatch* OR department* OR unit* OR ward* OR room* OR center* OR centre* OR system* OR stay* or admit* or admission* or evaluation* OR assess* OR medicine OR visit* OR Nurs* OR physician* OR clinician* OR personnel OR patient* OR accidents))))

Supplementary Material 2

PRISMA Diagram for PICO-1



PRISMA Diagram for PICO-2



Supplementary Material 3

Appendix 1. The GEAR 2.0-ADC Network Authors

**Consensus Conference Ranking of Communication/Decision-Making Question
Priority Comparing ED Providers, Non-ED Providers, and PLWD/Care Partners**
Research Priority Rank—ED Providers

- (1) What are the barriers and facilitators of effective communication with PLWD (or their care partners) during an episode of ED care, with attention to actionable elements/ideas?
- (2) What are valid and reliable measures or outcomes of “effective (short- and long-term) communication” in patients with dementia?
- (3) How do individual, provider, and system-level factors that influence communication for ED patients living with dementia (or their care partners)?
Examples: ethnic, gender, and socioeconomic factors or conscious or unconscious biases.
- (4) What are the best practices (when/how) for engagement of care partners in care decision-making in the ED?
- (5) How can each member of the ED care team (eg, social work, physician, tech, nurses, etc.) ensure high-quality communication with PLWD, care partners, and other team members?

Research Priority Rank—Non-ED Providers

- (1) What are the barriers and facilitators of effective communication with PLWD (or their care partners) during an episode of ED care, with attention to actionable elements/ideas?
- (2) What are the best practices (when/how) for engagement of care partners in care decision-making in the ED?
- (3) How do individual, provider, and system-level factors that influence communication for ED patients living with dementia (or their care partners)?
Examples: ethnic, gender, and socioeconomic factors or conscious or unconscious biases.
- (4) How can each member of the ED care team (eg, social work, physician, tech, nurses, etc.) ensure high-quality communication with PLWD, care partners, and other team members?
- (5) What are valid and reliable measures or outcomes of “effective (short- and long-term) communication” in patients with dementia?

Research Priority Rank—PLWD/Care Partners

- (1) What are the barriers and facilitators of effective communication with PLWD (or their care partners) during an episode of ED care, with attention to actionable elements/ideas?
- (2) How can each member of the ED care team (eg, social work, physician, tech, nurses, etc.) ensure high-quality communication with PLWD, care partners, and other team members?
- (3a) *What are the best practices (when/how) for engagement of care partners in care decision-making in the ED?
- (3b) *What are valid and reliable measures or outcomes of “effective (short- and long-term) communication” in patients with dementia?
- (5) How do individual, provider, and system-level factors that influence communication for ED patients living with dementia (or their care partners)?
Examples: ethnic, gender, and socioeconomic factors or conscious or unconscious biases.

*These 2 questions received equal levels of support by PLWD/Care Partners.

Names	Degrees
Aggarawal, Neelum T	MD
Allore, Heather	PhD
Aloysi, Amy	MD, MPH
Belleville, Michael	HS
Bellolio, Fernanda M	MD
Betz, Marian (Emmy)	MD, MPH
Biese, Kevin	MD, MAT
Brandt, Cynthia	MD, MPH
Bruursema, Stacey	LMSW
Carnahan, Ryan	PharmD, MS, BCPP
Carpenter, Christopher	MD, MSC
Carr, David	MD
Chin-Hansen, Jennie	MS, RN, FAAN
Daven, Morgan	MA
Degeys, Nida	MD
Dresden, Scott M	MD, MS
Dussetschleger, Jeffrey	DDS, MPH
Ellenbogen, Michael	AA
Falvey, Jason	DPT, PhD
Foster, Beverley	HS
Gettel, Cameron	MD
Gifford, Angela	MA
Gilmore-Bykovskiy, Andrea	PhD, RN
Goldberg, Elizabeth	MD, ScM
Han, Jjin	MD, MSC
Hardy, James	MD
Hastings, Susan N	MD
Hirshon, Jon M	MD, PhD, MPH
Hoang, Ly	BS
Hogan, Teresita	MD
Hung, William	MD, MPH
Hwang, Ula	MD, MPH
Isaacs, Eric	MD
Jaspal, Naveena	BA
Jobe, Deb	BS
Johnson, Jerry	MD
Kelly, Kathleen (Kathy)	MPA
Kennedy, Maura	MD
Kind, Amy	MD, PhD
Leggett, Jesseca	BS
Malone, Michael	MD
Moccia, Michelle	DNP
Moreno, Monica	BS
Morrow-Howell, Nancy	MSW, PhD
Nowroozpoor, Armin	MD
Ohuabunwa, Ugochi	MD
Oiyemhonian, Brenda	MD, MHSA, MPH
Perry, William	PhD
Prusaczyk, Beth	PhD, MSW
Resendez, Jason	BA
Rising, Kristin	MD
Sano, Mary	PhD
Savage, Bob	HS
Shah, Manish	MD, MPH
Suyama, Joe	MD, FACEP
Swartzberg, Jeremy	MD
Taylor, Zachary	BS
Tolia, Vaishal	MD, MPH
Vann, Allan	EdD
Webb, Teresa	RN
Weintraub, Sandra	PhD