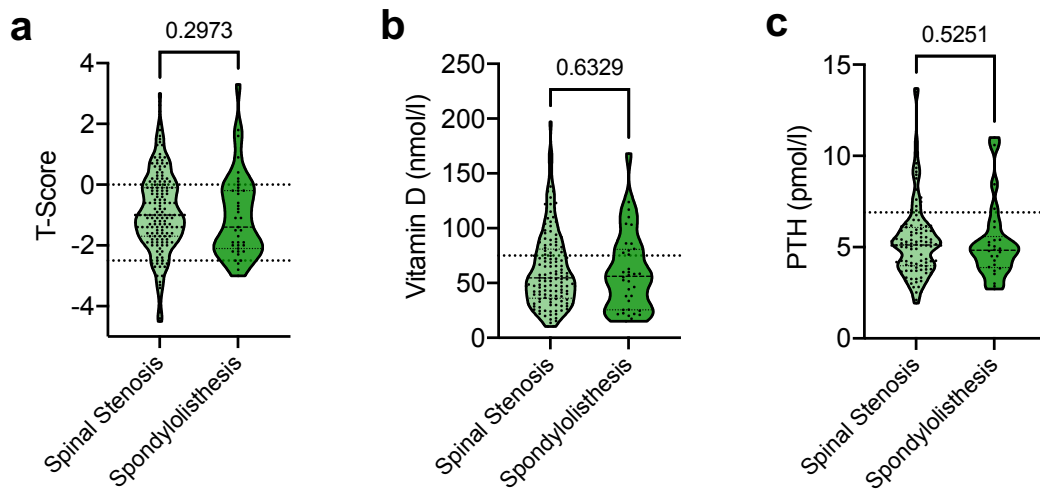


## Supplementary Material

### Skeletal status in patients scheduled for elective lumbar spine surgery:

#### Comparison of discectomy, decompression, fusion and revision



**Supplementary Fig. 1: Comparison of BMD T-score and laboratory mineral metabolism values between patients with spinal stenosis and degenerative spondylolisthesis.** (a) BMD T-score assessed by DXA, (b) vitamin D, and (c) PTH. The dashed lines of the truncated violin plots represent the median and quartiles. P-values are given above the diagrams.