

Supplementary Table S1. The proportion of patients with nausea, vomiting, or rescue

		Arm D4 (n = 138)	Arm D1 (n = 136)	P-value
Nausea (NRS>1), n (%)	Acute	14 (10.1)	16 (11.8)	0.67
	Delayed	49 (35.5)	65 (47.8)	0.039
	Overall	52 (37.7)	68 (50.0)	0.040
Severe nausea (NRS \geq 3), n (%)	Acute	7 (5.1)	5 (3.7)	0.57
	Delayed	28 (20.3)	35 (25.7)	0.28
	Overall	30 (21.7)	37 (27.2)	0.29
Vomiting, n (%)	Acute	1 (0.7)	1 (0.7)	0.99
	Delayed	7 (5.1)	7 (5.1)	0.98
	Overall	7 (5.1)	8 (5.9)	0.77
Rescue medications, n (%)	Acute	4 (2.9)	3 (2.2)	0.72
	Delayed	25 (18.1)	31 (22.8)	0.34
	Overall	26 (18.8)	34 (25.0)	0.22

Abbreviations: Arm D4, dexamethasone day 1 to 4; Arm D1, dexamethasone day 1.

Supplementary Table S2. Use of rescue medication

		Arm D4 (n = 138)	Arm D1 (n = 136)	P-value
Overall, n (%)		26 (18.8)	34 (25.0)	0.22
Time from CDDP administration (hours),	0-24	4 (2.9)	3 (2.2)	0.72
n (%)	24-48	4 (2.9)	5 (3.7)	0.72
	48-72	11 (8.0)	16 (11.8)	0.29
	72-96	14 (10.1)	18 (13.2)	0.43
	96-120	20 (14.5)	14 (10.3)	0.29

Abbreviations: Arm D4, dexamethasone day 1 to 4; Arm D1, dexamethasone day 1; CDDP, cisplatin.

Supplementary Table S3. Adverse events according to the investigator's evaluation

Symptom	Arm D4 (n = 139)						Arm D1 (n = 136)						P-value
	Grade 1, n (%)	Grade 2, n (%)	Grade 3, n (%)	Grade 4, n (%)	Any Grade, n (%)	≥Grade 3, n (%)	Grade 1, n (%)	Grade 2, n (%)	Grade 3, n (%)	Grade 4, n (%)	Any Grade, n (%)	≥Grade 3, n (%)	
Nausea	34 (24.5)	23 (16.5)	2 (1.4)	0 (0.0)	59 (42.4)	2 (1.4)	35 (25.7)	38 (27.9)	1 (0.7)	0 (0.0)	74 (54.4)	1 (0.7)	0.031
Vomiting	5 (3.6)	2 (1.4)	0 (0.0)	0 (0.0)	7 (5.0)	0 (0.0)	7 (5.1)	1 (0.7)	0 (0.0)	0 (0.0)	8 (5.9)	0 (0.0)	0.97
Dry mouth	53 (38.1)	5 (3.6)	0 (0.0)	0 (0.0)	58 (41.7)	0 (0.0)	55 (40.4)	4 (2.9)	0 (0.0)	0 (0.0)	59 (43.4)	0 (0.0)	0.88
Mucositis oral	7 (5.0)	2 (1.4)	0 (0.0)	0 (0.0)	9 (6.5)	0 (0.0)	12 (8.8)	0 (0.0)	0 (0.0)	0 (0.0)	12 (8.8)	0 (0.0)	0.80
Constipation	46 (33.1)	51 (36.7)	2 (1.4)	0 (0.0)	99 (71.2)	2 (1.4)	66 (48.5)	30 (22.1)	2 (1.5)	0 (0.0)	98 (72.1)	2 (1.5)	0.15
Diarrhea	15 (0.8)	6 (4.3)	0 (0.0)	0 (0.0)	21 (15.1)	0 (0.0)	23 (16.9)	2 (1.5)	2 (1.5)	0 (0.0)	27 (19.9)	2 (1.5)	0.44
Bloating	28 (20.1)	5 (3.6)	0 (0.0)	0 (0.0)	33 (23.7)	0 (0.0)	27 (19.9)	7 (5.1)	0 (0.0)	0 (0.0)	34 (25.0)	0 (0.0)	0.67
Anorexia	38 (27.3)	33 (23.7)	6 (4.3)	0 (0.0)	77 (55.4)	6 (4.3)	60 (44.1)	43 (31.6)	4 (2.9)	0 (0.0)	107 (78.7)	4 (2.9)	0.0067
Depression	7 (5.0)	1 (0.7)	0 (0.0)	0 (0.0)	8 (5.8)	0 (0.0)	7 (5.1)	0 (0.0)	0 (0.0)	0 (0.0)	7 (5.1)	0 (0.0)	0.66
Anxiety	23 (6.5)	1 (0.7)	0 (0.0)	0 (0.0)	24 (17.3)	0 (0.0)	19 (14.0)	0 (0.0)	0 (0.0)	0 (0.0)	19 (14.0)	0 (0.0)	0.38
Insomnia	28 (20.1)	4 (2.9)	0 (0.0)	0 (0.0)	32 (23.0)	0 (0.0)	24 (17.6)	3 (2.2)	0 (0.0)	0 (0.0)	27 (19.9)	0 (0.0)	0.51
Hot flushes	23 (16.5)	1 (0.7)	0 (0.0)	0 (0.0)	24 (17.3)	0 (0.0)	33 (24.3)	0 (0.0)	0 (0.0)	0 (0.0)	33 (24.3)	0 (0.0)	0.21
Hiccups	57 (41.0)	17 (12.2)	2 (1.4)	0 (0.0)	76 (54.7)	2 (1.4)	66 (48.5)	18 (13.2)	0 (0.0)	0 (0.0)	84 (61.8)	0 (0.0)	0.54
Somnolence	58 (41.7)	3 (2.2)	0 (0.0)	0 (0.0)	61 (43.9)	0 (0.0)	53 (39.0)	9 (6.6)	0 (0.0)	0 (0.0)	62 (45.6)	0 (0.0)	0.38
Dysgeusia	15 (10.8)	8 (5.8)	0 (0.0)	0 (0.0)	23 (16.5)	0 (0.0)	19 (14.0)	7 (5.1)	0 (0.0)	0 (0.0)	26 (19.1)	0 (0.0)	0.76
Headache	16 (11.5)	0 (0.0)	0 (0.0)	0 (0.0)	16 (11.5)	0 (0.0)	27 (19.9)	0 (0.0)	0 (0.0)	0 (0.0)	27 (19.9)	0 (0.0)	0.057
Olfactory nerve disorder	3 (2.2)	0 (0.0)	0 (0.0)	0 (0.0)	3 (2.2)	0 (0.0)	4 (2.9)	0 (0.0)	0 (0.0)	0 (0.0)	4 (2.9)	0 (0.0)	0.68
Fatigue	51 (36.7)	12 (8.6)	1 (0.7)	0 (0.0)	64 (46.0)	1 (0.7)	49 (36.0)	13 (9.6)	0 (0.0)	0 (0.0)	62 (45.6)	0 (0.0)	0.91
Fall	3 (2.2)	2 (1.4)	0 (0.0)	0 (0.0)	5 (3.6)	0 (0.0)	2 (1.5)	0 (0.0)	0 (0.0)	0 (0.0)	2 (1.5)	0 (0.0)	0.17

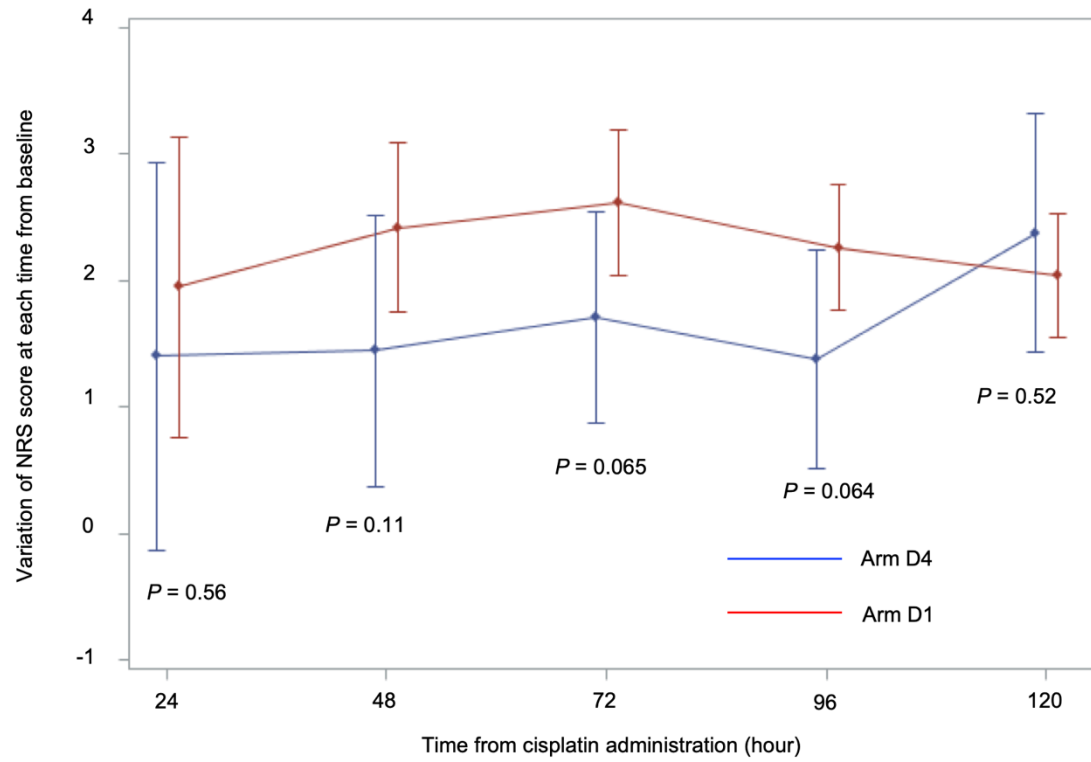
Abbreviations: Arm D4, dexamethasone day 1 to 4; Arm D1, dexamethasone day1.

Supplementary Table S4. Quality of Life Analyses

Variable	Arm D4 (n = 139)		Arm D1 (n = 136)	
	Screening Phase,	End of the Overall Period,	Screening Phase,	End of the Overall Period,
	Mean [95%CI]	Mean [95%CI]	Mean [95%CI]	Mean [95%CI]
Global health status	59.1 [55.0, 63.1]	49.3 [44.9, 53.7]	63.4 [59.1, 67.6]	51.4 [47.5, 55.3]
Functional scales				
Physical	88.7 [86.8, 90.7]	80.7 [77.5, 84.0]	89.2 [86.7, 91.8]	85.9 [83.2, 88.7]
Role	84.3 [80.8, 87.9]	64.2 [58.8, 69.7]	87.6 [84.4, 90.8]	71.6 [66.4, 76.9]
Emotional	77.2 [74.9, 79.6]	82.5 [79.9, 85.1]	78.8 [75.8, 81.8]	85.3 [82.6, 88.0]
Cognitive	85.5 [83.1, 87.9]	80.9 [77.8, 84.0]	86.6 [83.9, 89.4]	85.8 [83.2, 88.3]
Social	78.3 [74.8, 81.7]	72.1 [67.8, 76.5]	75.6 [71.4, 79.9]	72.8 [67.7, 77.9]
Symptom scales				
Fatigue	25.9 [22.7, 29.1]	37.2 [33.1, 41.4]	24.4 [21.2, 27.7]	31.8 [28.3, 35.4]
Nausea and vomiting	3.3 [1.8, 4.8]	12.8 [9.6, 15.9]	2.3 [1.1, 3.6]	12.1 [9.4, 14.8]
Pain	20.3 [16.5, 24.1]	21.7 [17.6, 25.7]	17.0 [13.9, 20.2]	14.2 [10.9, 17.6]
Dyspnea	18.4 [14.6, 22.1]	19.7 [15.6, 23.8]	15.9 [12.2, 19.7]	16.0 [12.4, 19.7]
Insomnia	22.9 [19.0, 27.0]	28.5 [23.8, 33.2]	18.4 [14.4, 22.4]	21.6 [17.7, 25.5]
Appetite loss	20.3 [16.6, 24.0]	41.1 [35.5, 46.8]	14.0 [10.3, 17.7]	45.4 [39.7, 51.1]
Constipation	17.4 [13.8, 21.0]	42.1 [36.8, 47.4]	14.7 [11.2, 18.2]	31.8 [27.1, 36.5]
Diarrhea	10.1 [7.2, 13.1]	19.1 [15.0, 23.3]	9.1 [6.2, 11.9]	21.9 [17.1, 26.7]

Abbreviations: CI, confidential interval; Arm D4, dexamethasone days 1–4; Arm D1, dexamethasone day 1.

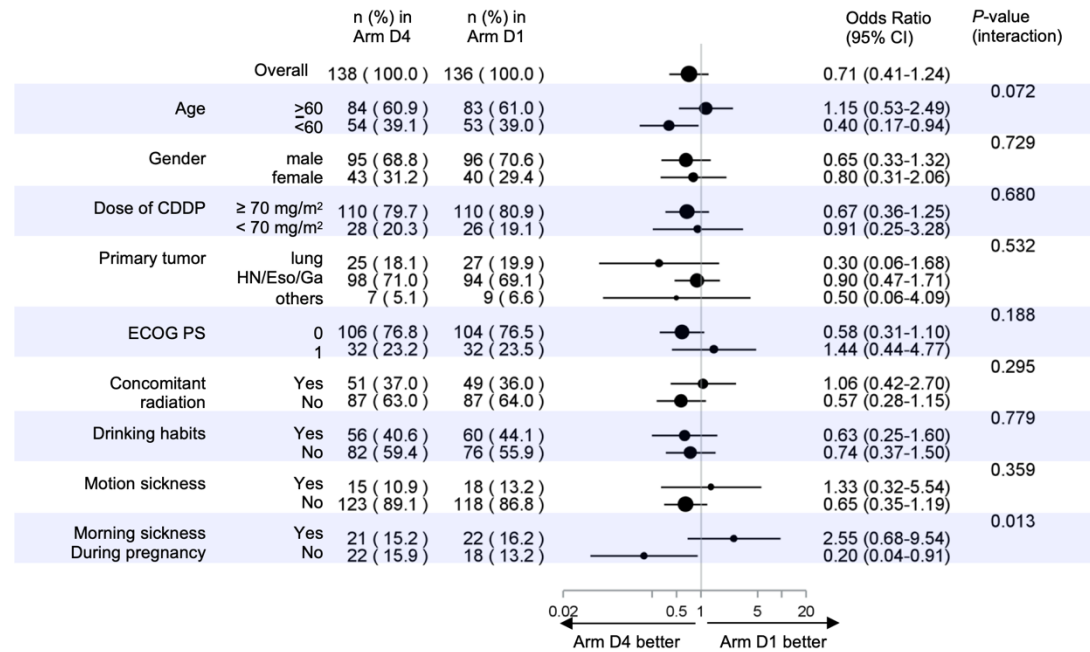
Supplementary Figure S1. Variation of NRS scores for nausea from baseline



The NRS nausea scores were analyzed every 24 hours from the start of cisplatin administration to 120 hours.

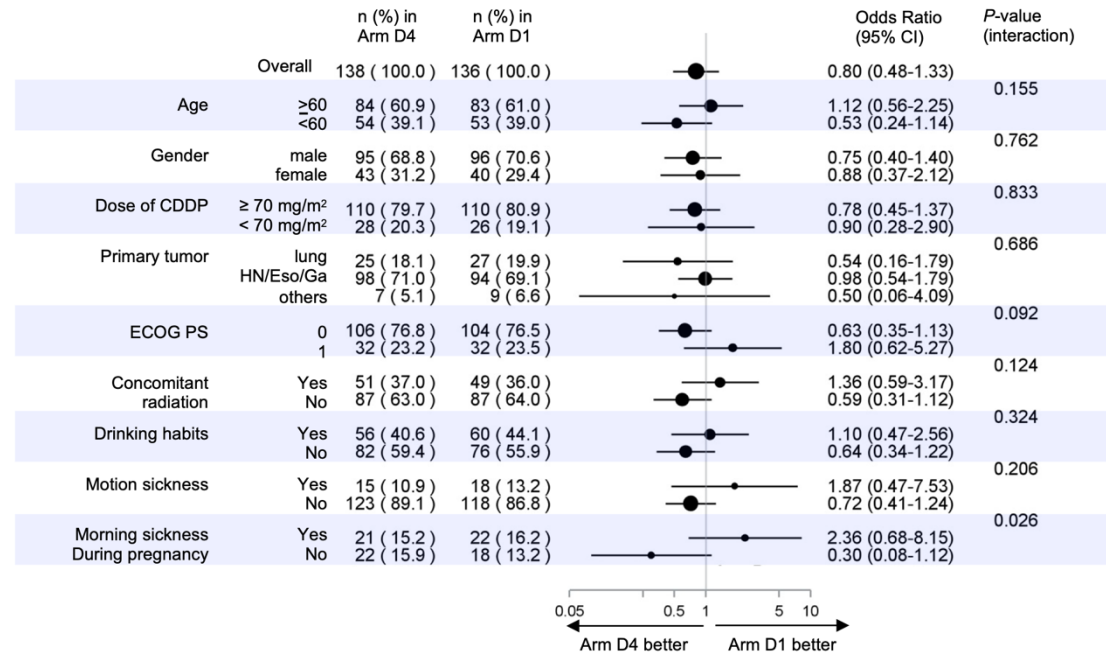
Arm D4, dexamethasone days 1–4; Arm D1, dexamethasone day 1; NRS, numerical rating scale.

Supplementary Figure S2. Forest plot of independent prognostic factor subgroup analyses for CR rate



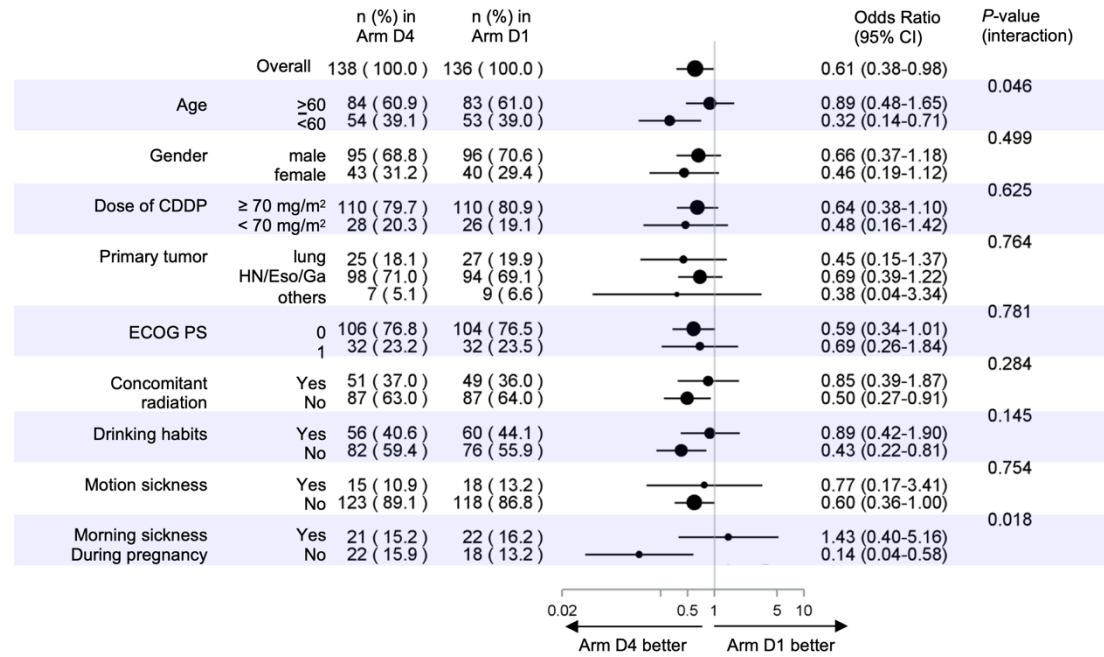
Arm D4, dexamethasone days 1–4; Arm D1, dexamethasone day 1; CDDP, cisplatin; CR, complete response; ECOG, Eastern Cooperative Oncology Group; PS, performance status.

Supplementary Figure S3. Forest plot of independent prognostic factor subgroup analyses for CC rate



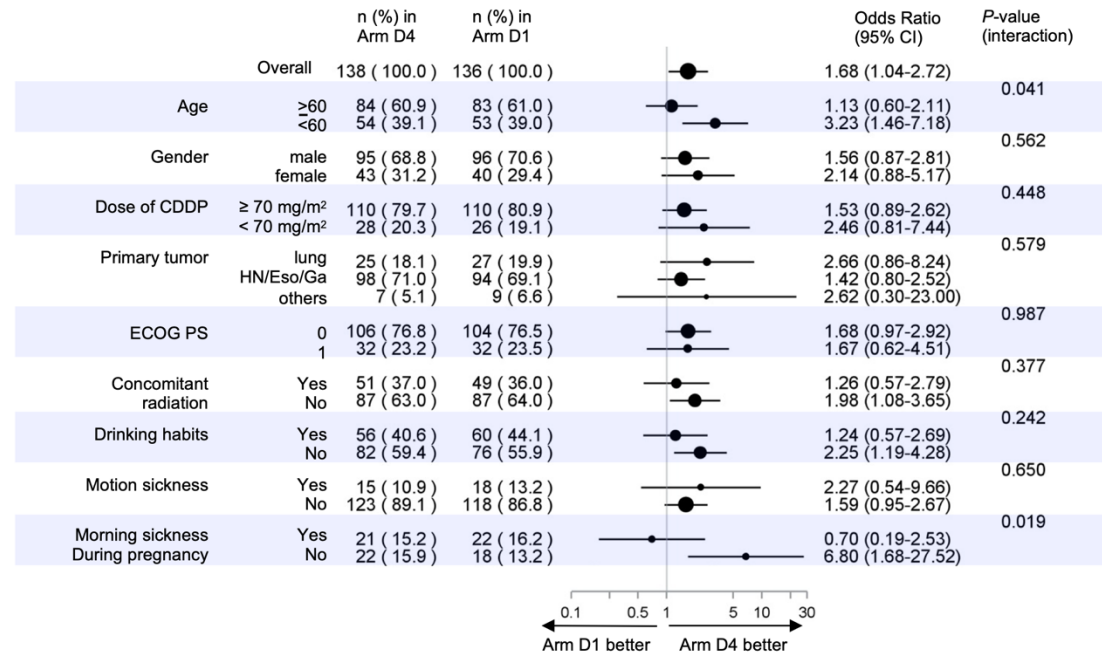
Arm D4, dexamethasone days 1–4; Arm D1, dexamethasone day 1; CDDP, cisplatin; CC, complete control; ECOG, Eastern Cooperative Oncology Group; PS, performance status.

Supplementary Figure S4. Forest plot of independent prognostic factor subgroup analyses for TC rate



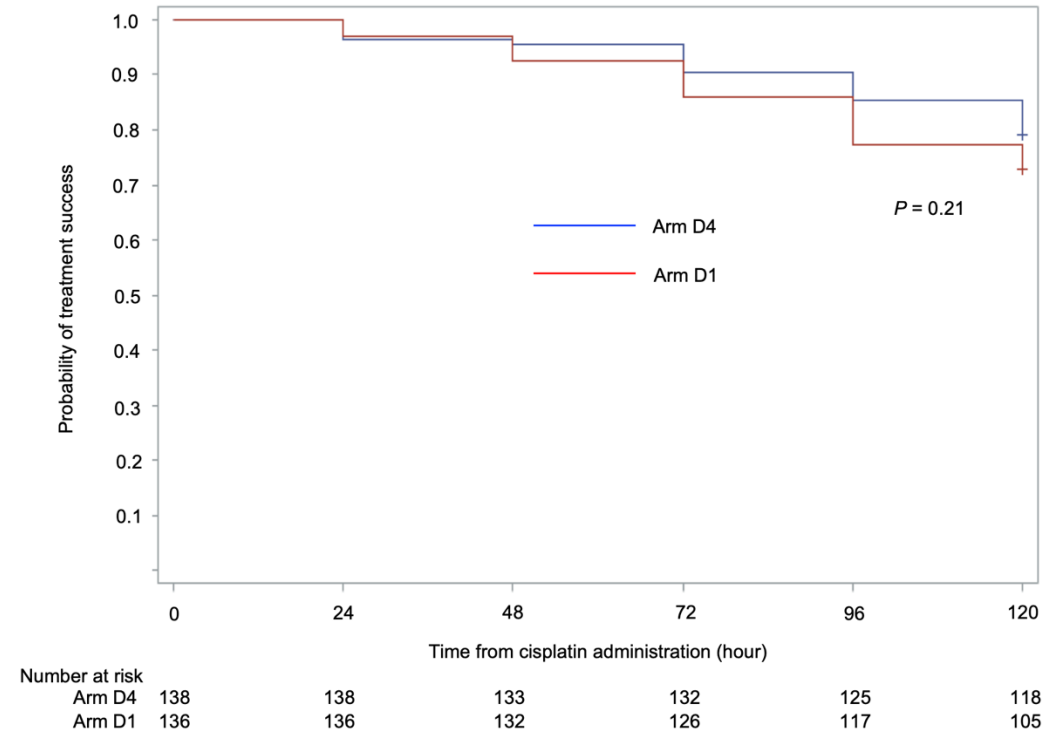
Arm D4, dexamethasone days 1–4; Arm D1, dexamethasone day 1; CDDP, cisplatin; ECOG, Eastern Cooperative Oncology Group; TC, total control; PS, performance status.

Supplementary Figure S5. Forest plot of independent prognostic factor subgroup analyses for the incidence of no nausea



Arm D4, dexamethasone days 1–4; Arm D1, dexamethasone day 1; CDDP, cisplatin; CR, complete response; ECOG, Eastern Cooperative Oncology Group; PS, performance status.

Supplementary Figure S6. Kaplan–Meier plot showing time to antiemetic treatment failure



Arm D4, dexamethasone days 1–4; Arm D1, dexamethasone day 1.