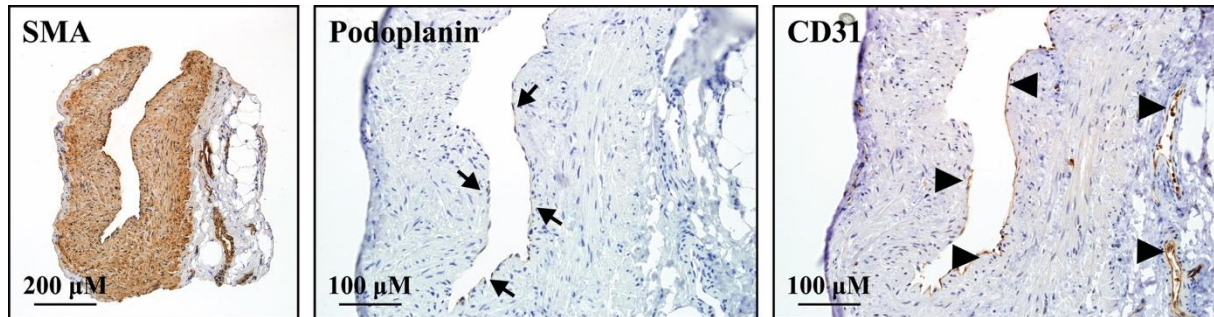


#### SDC 4



**Light microscopy images of transverse serial sections through the lymphatic wall (SDC3; Case 1).**

Smooth muscle actin staining showing thickness of the smooth muscle media (x10 magnification) (*left*). D2-40 (podoplanin) staining showing lymphatic endothelium (20x magnification, arrows) (*middle*). CD31 immunostaining showing weak expression only lymphatic endothelium (20x magnification; closed arrows) but strongly stained CD31 structures in blood vasculature associated with the lymphatic wall (*right*).