

Figure S1: Additional images of FJB stained tissue not shown in Figure 2. Controls for each time point and an additional region, the posterolateral cortical amygdaloid nucleus (PLCo) are shown. Representative images are taken at the T0, T2, T7, and T14 time points. Scale bar = 50 μ m.

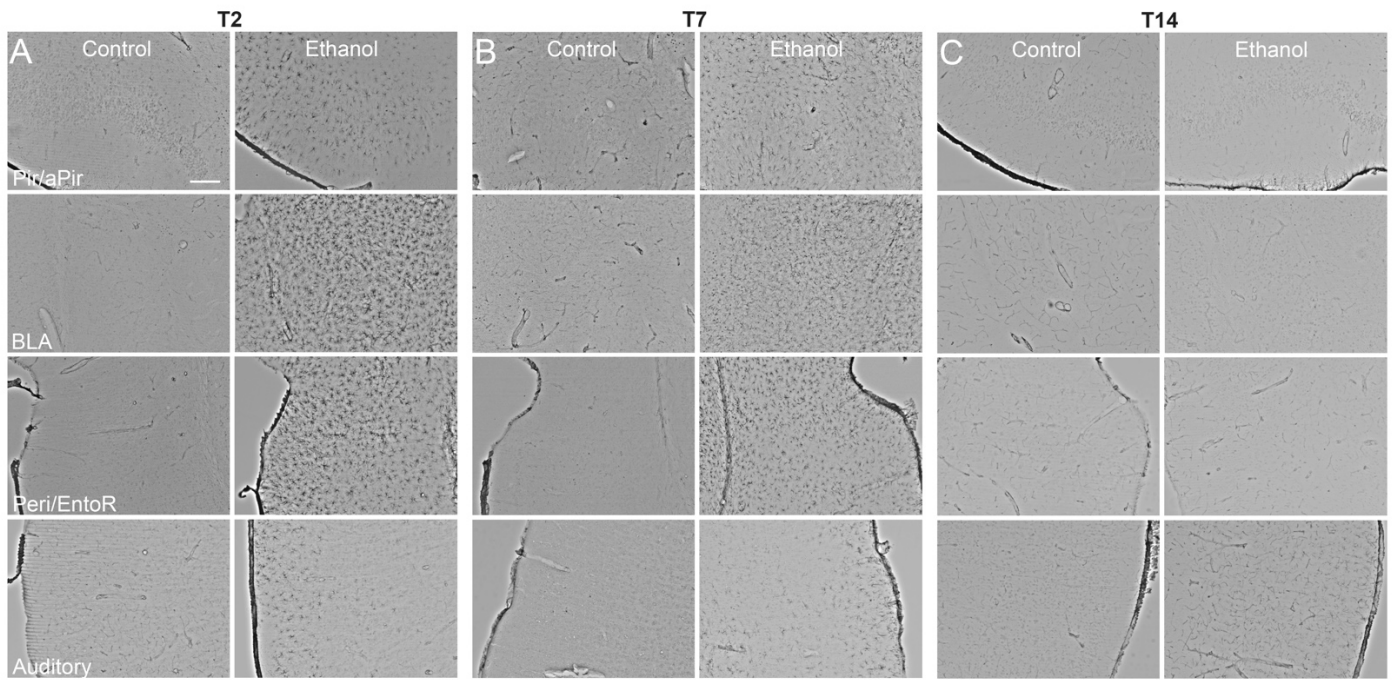


Figure S2: Additional images of vimentin immunoreactivity in cortical regions not shown in Figure 5. Controls for each time point and an additional region, the auditory cortex, are shown. Representative images are taken at the T2, T7, and T14 time points. Scale bar = 250 μ m.