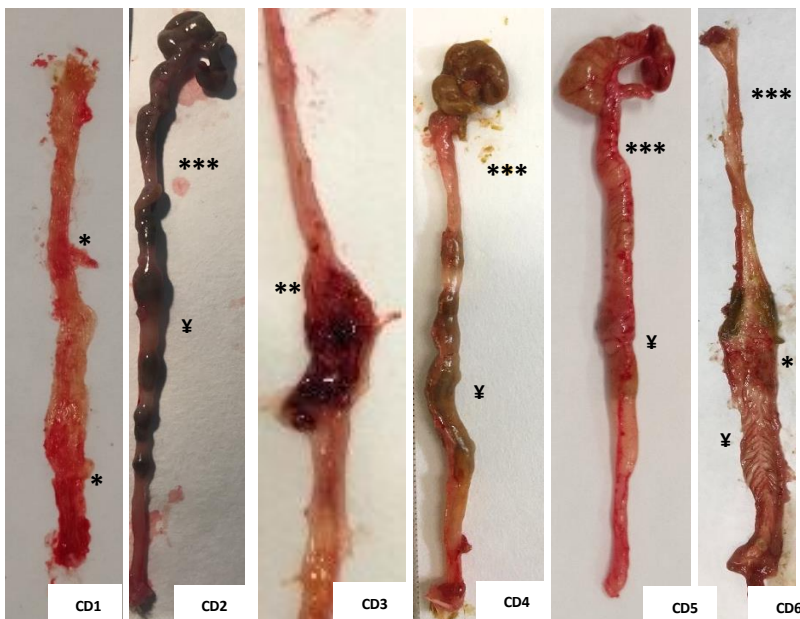




### Control (C) group

Colon images from control group (C) of each mouse. The images show regular length of colon and absence of macroscopic damage.



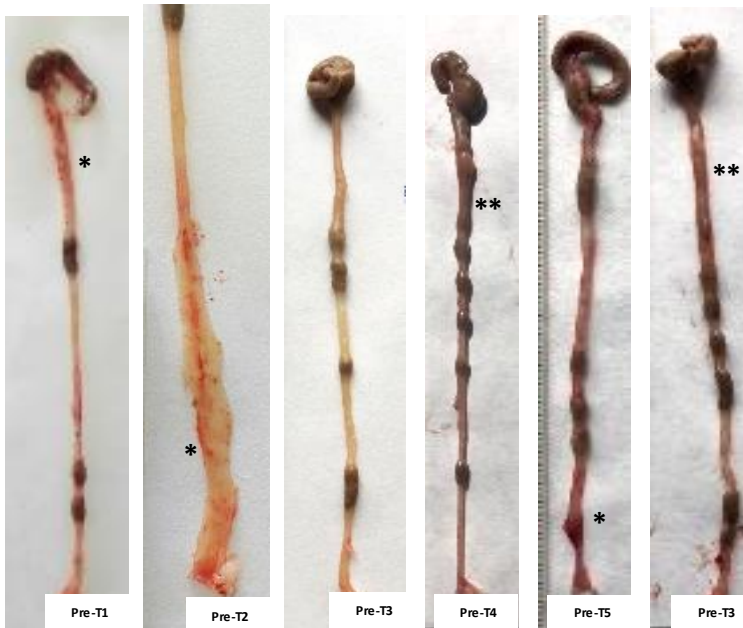
### Crohn Disease (CD) group

Colon images from CD group (CD) of each mouse. Images show \* Hyperaemia, \*\* Ulcer and/or perforation, \*\*\* shortening colon, ¥ oedema.



**post-Treatment (post-T) group**

Colon images from post-Treatment group (pre-T) of each mouse. Images show \*slight oedema and absence of ulcer or any other colon tissue abnormalities.



**pre-Treatment (pre-T) group**

Colon images from pre-Treatment group (pre-T) of each mouse. Images show \* Slight hyperaemia, \*\* slight oedema and absence of ulcer or any other colon tissue abnormalities.