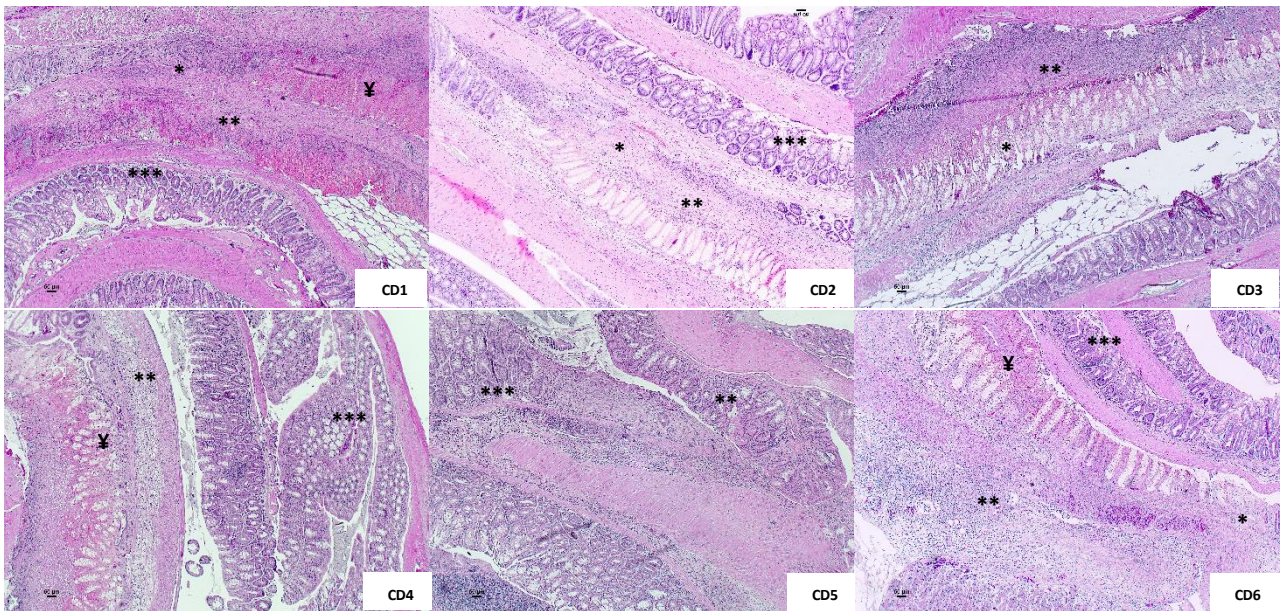


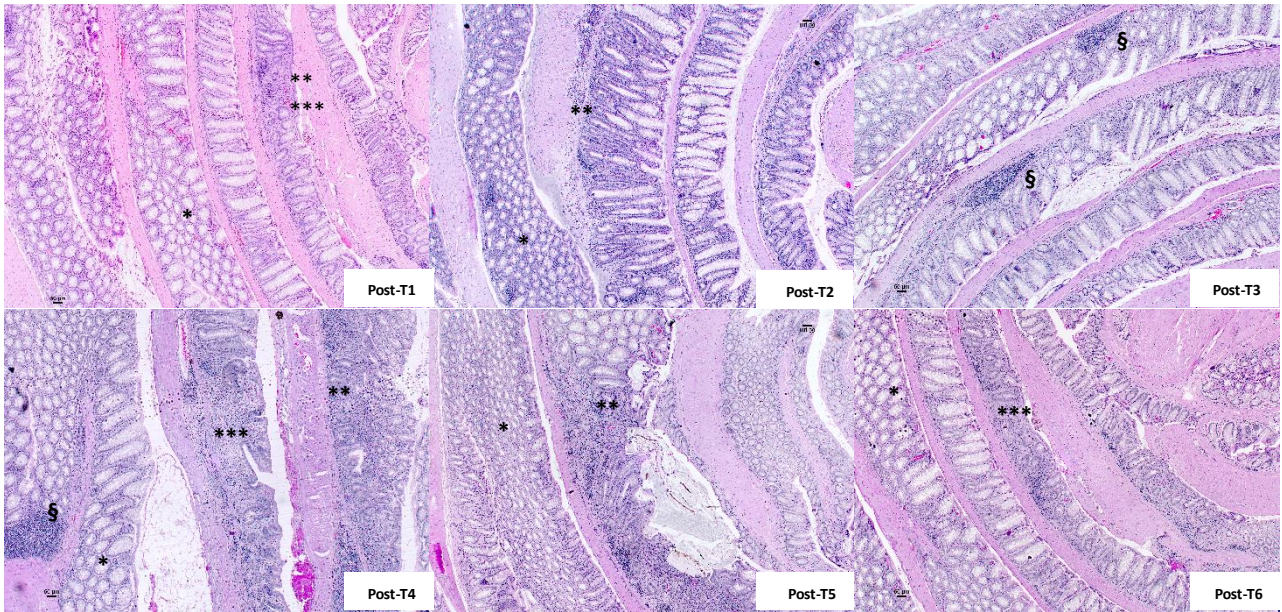
Control (C) group

Normal histoarchitecture in colon's tissue from Control group (C) of each mouse. *Conserved mucosa, ** Normal crypts and, ***Physiological immune cell infiltration (lymph nodule). All images were captured at 40X



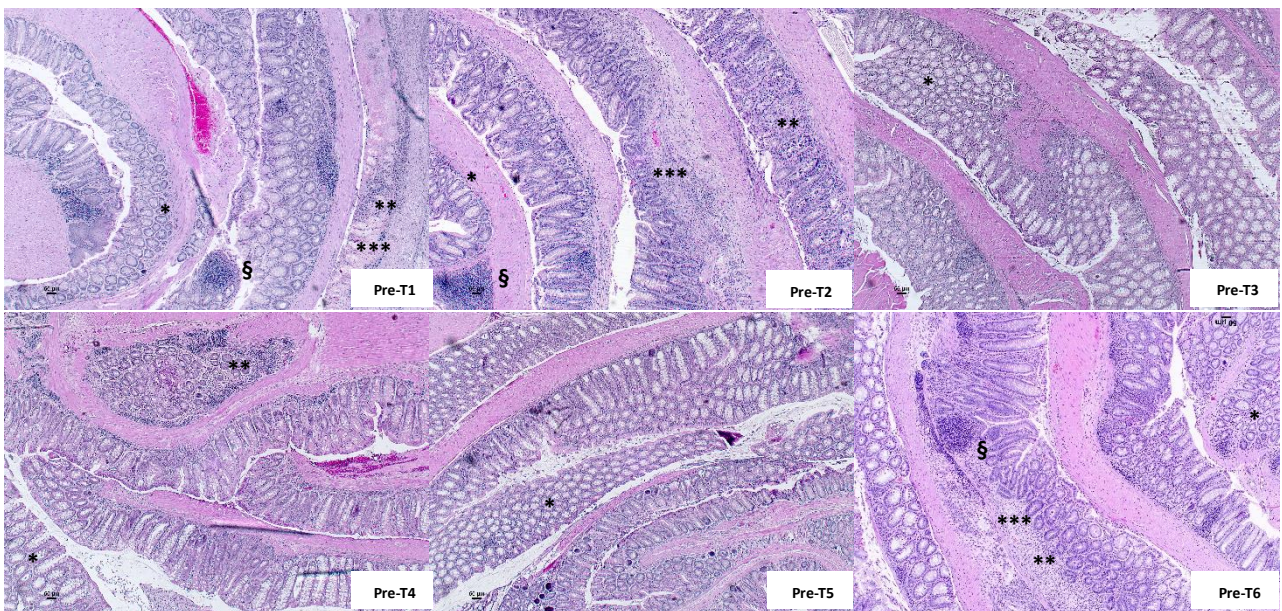
Crohn Disease (CD) group

Colon images from CD group (CD) of each mouse. *Distortion of colon architecture, ** Inflammatory cell infiltration, *** Loss of goblet cells and, ¥ Necrosis. All images were captured at 40X



post-Treatment (post-T) group

Colon images from post-Treatment group (pre-T) of each mouse. * Normal histoarchitecture, ** Immune cell infiltration, ***Loss of crypts and, § Physiological immune cell infiltration (lymph nodule). All images were captured at 40X



pre-Treatment (pre-T) group

Colon images from pre-Treatment group (pre-T) of each mouse. * Normal histoarchitecture, ** Immune cell infiltration, ***Loss of crypts and, § Physiological immune cell infiltration (lymph nodule). All images were captured at 40X.