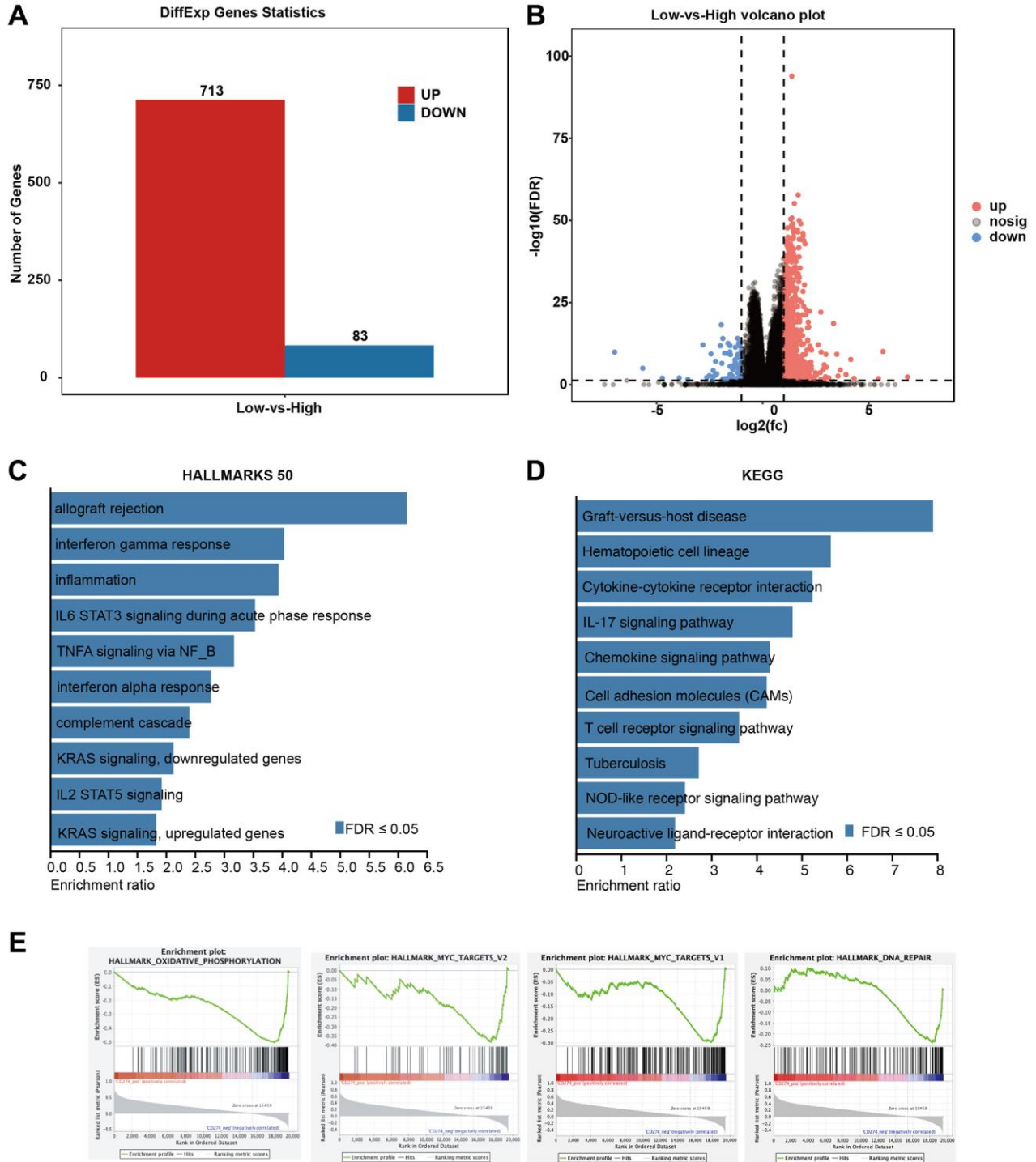
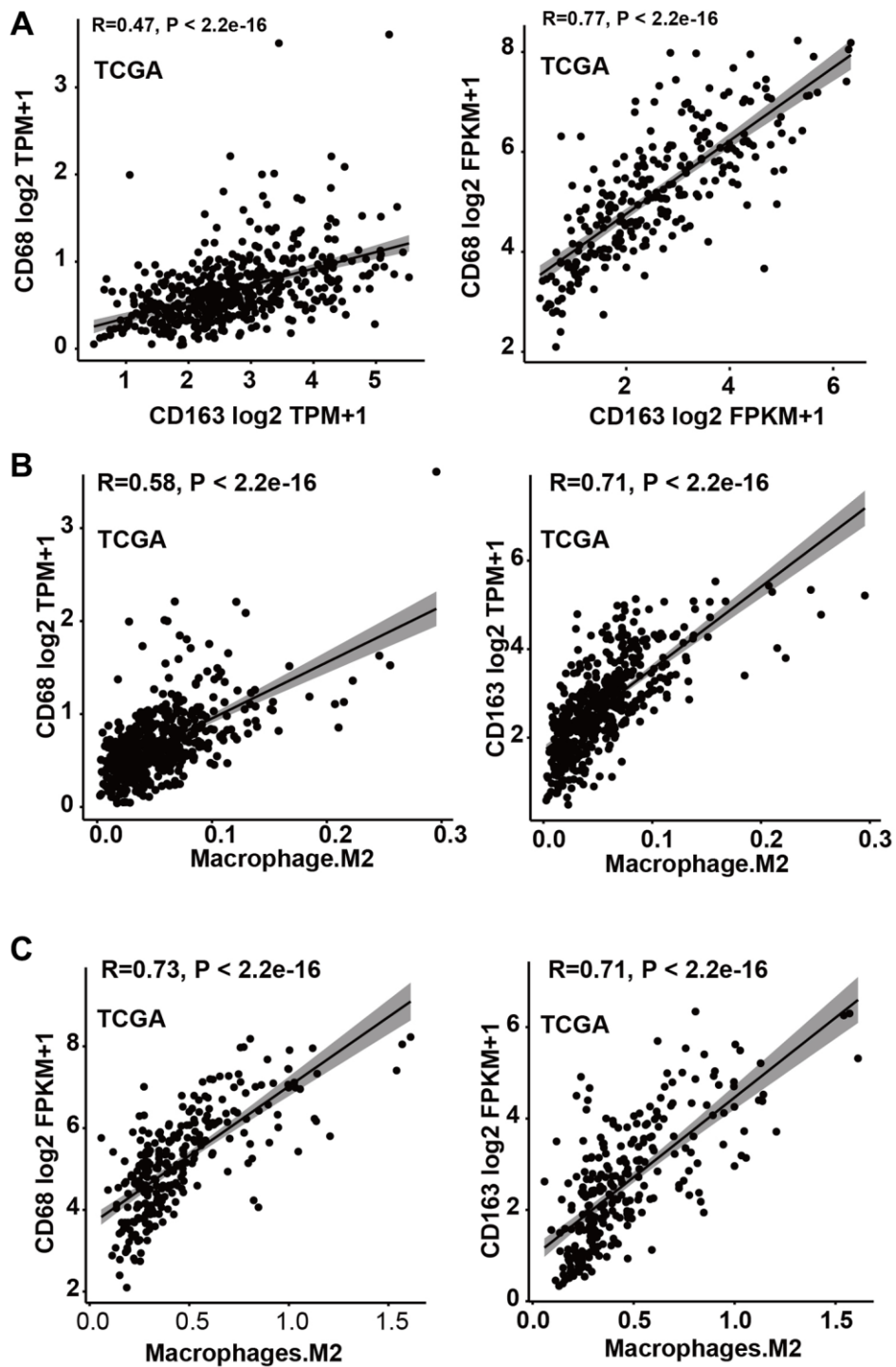


SUPPLEMENTARY FIGURES



**Supplementary Figure 1. PD-L1 expression was correlated with immune-related signaling in PCa.** (A) Bar plot shows the number of differentially expressed genes between PCa samples with high and low PD-L1 expression. (B) Volcano plot shows the distribution of the differentially expressed genes. (C, D) Barplots show the over-representation analysis of the differentially expressed genes. (E) Gene set enrichment analyses show signaling pathways that are negatively related to PD-L1 expression.



**Supplementary Figure 2. Correlation among CD168, CD63, and M2-TAM in RNA-Seq datasets.** (A) The correlation between the mRNA levels of CD68 and CD163. (B) Correlation between the infiltration levels of M2-TAMs and CD68 mRNA. (C) The correlation between CD63 mRNA and M2-TAMs infiltration.