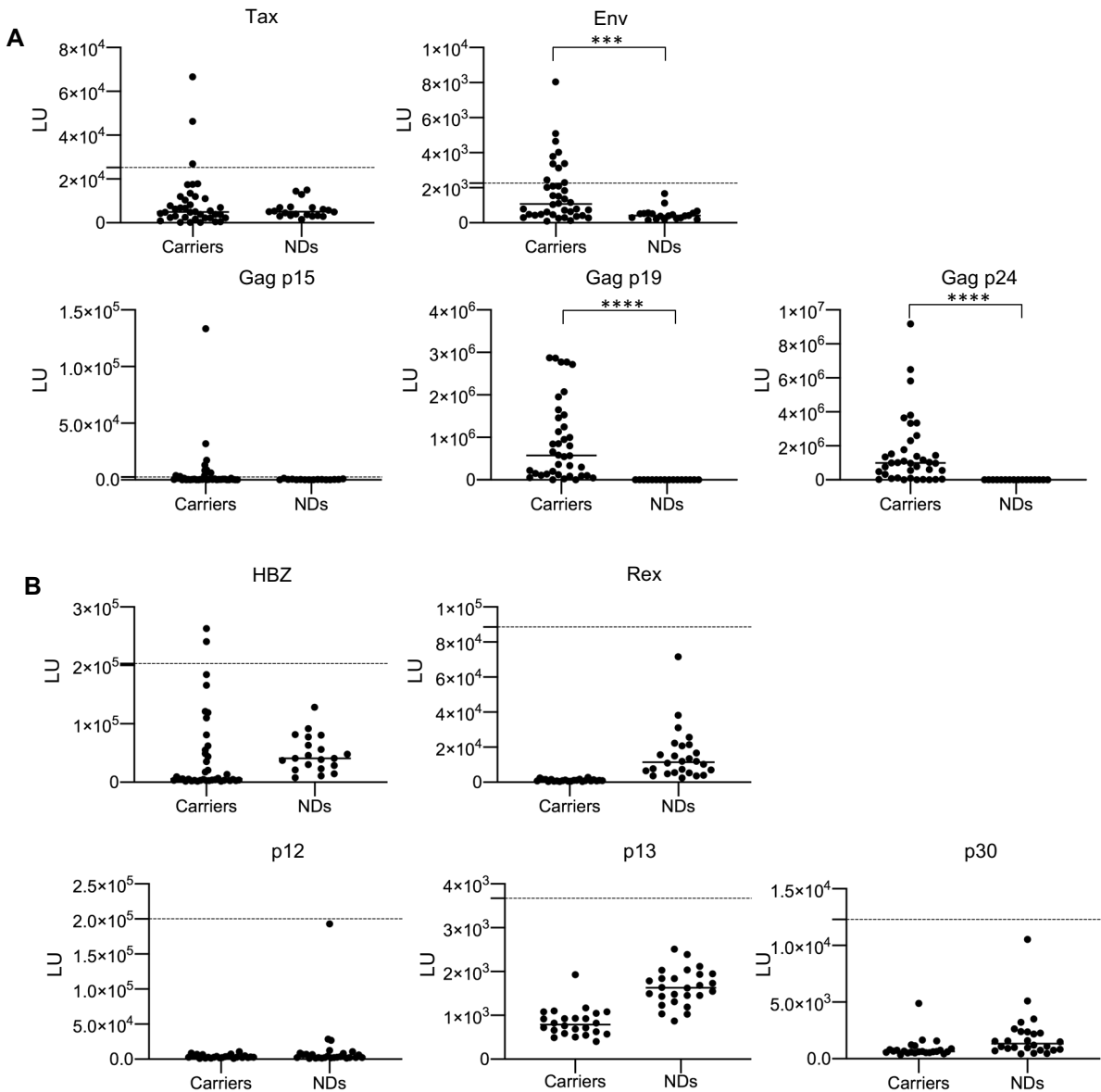


## Supplementary figure 1:

### Antibody responses in HTLV-1 infected and uninfected individuals.

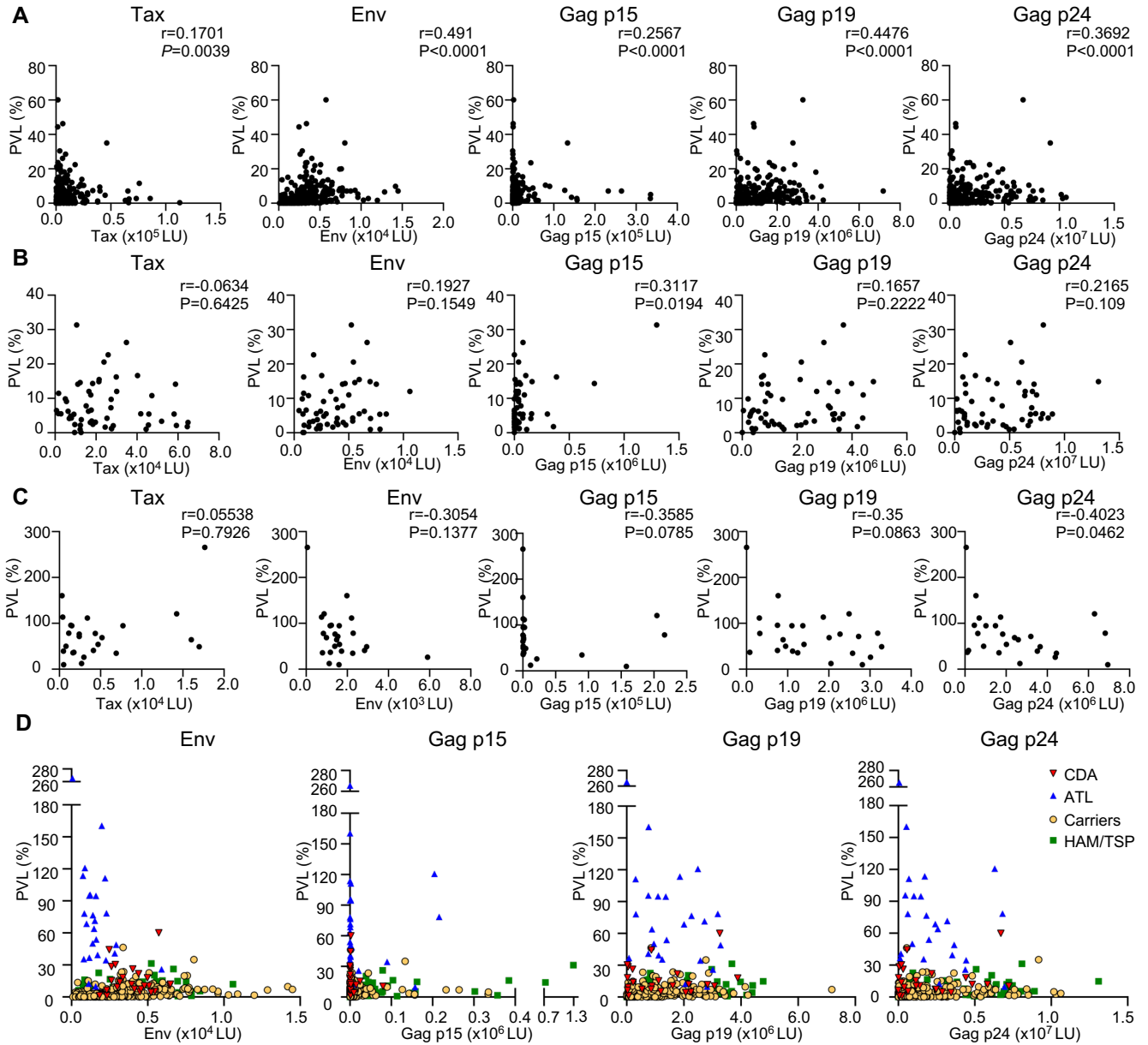
The horizontal bar represents the median. Dotted lines represent cutoff values calculated from the mean value of seronegative donors plus five standard deviations (SDs), as reported previously.<sup>28</sup>



## Supplementary figure 2:

### Antibody responses and PVL

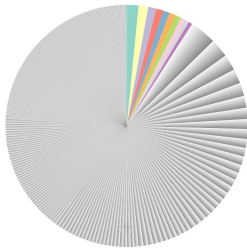
(A-C) Antibody responses and PVL in (A) carriers including CDA, (B) HAM/TSP patients and (C) ATL patients. (D) Antibody responses and PVL in CDA, ATL, carriers and HAM/TSP.



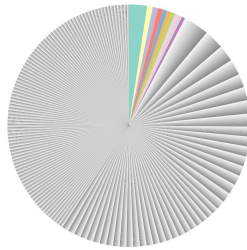
**Supplementary figure 3:**

**Clonality of infected cells in 3 carriers who had no driver mutations of ATL**  
Colored portions of the pie charts represent the top 10 clones of each case.

KC-8



KC-17



KC-30

