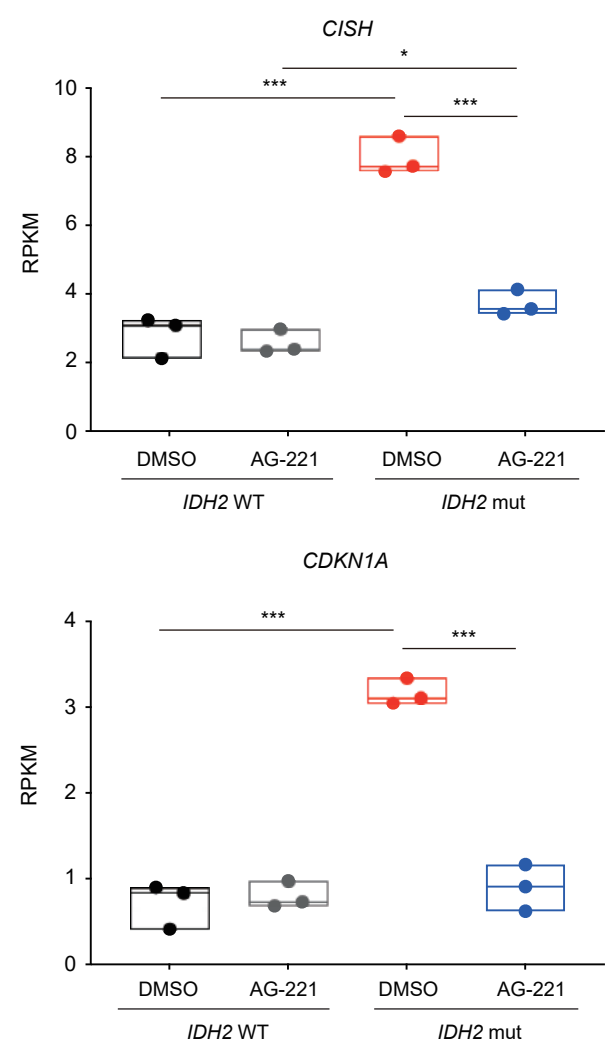
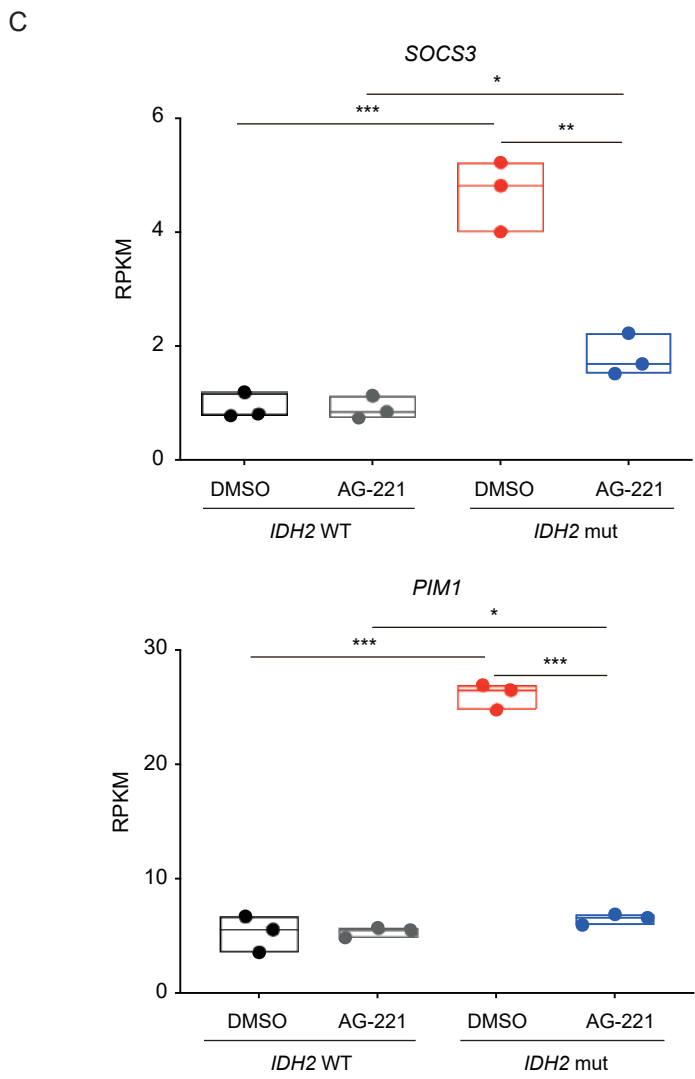
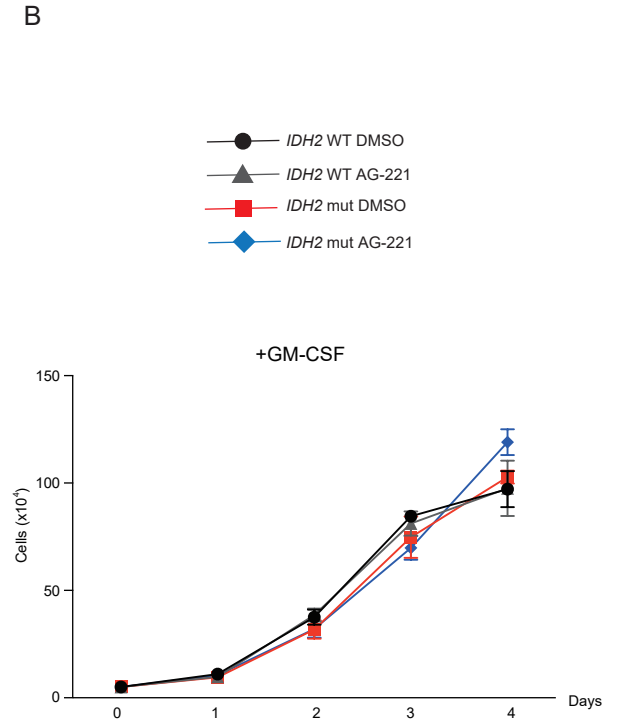
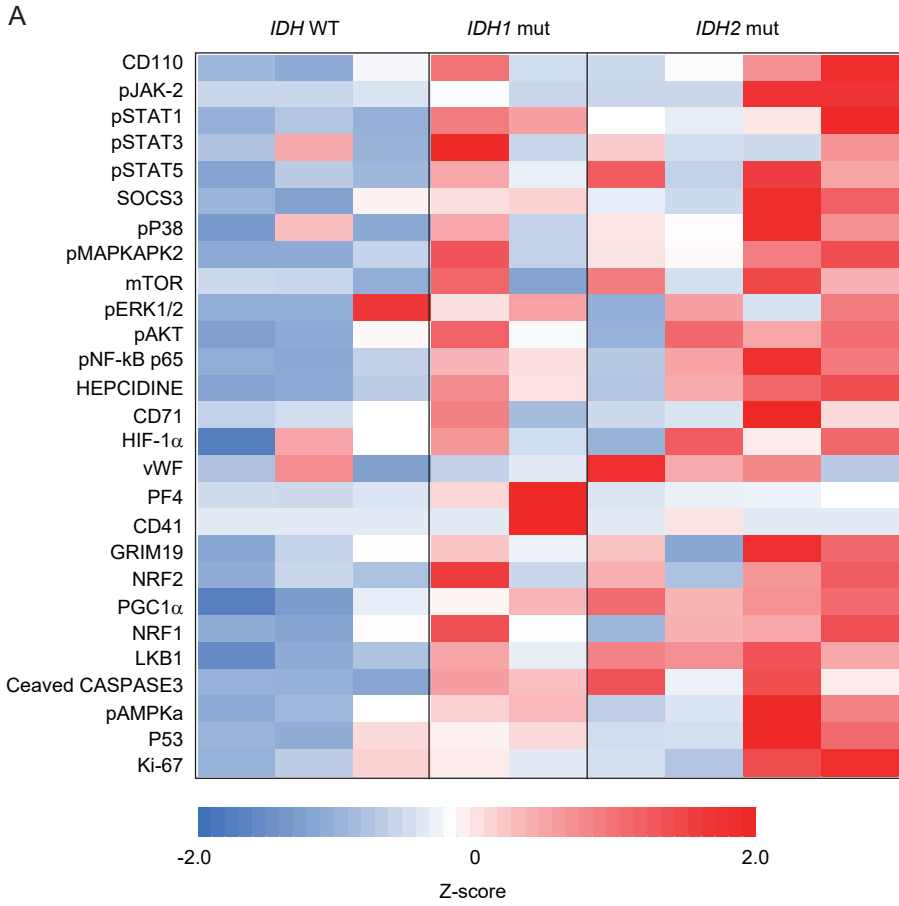


Supplemental Figure-1



Supplemental Figure 1. Intracellular 2-HG-dependent STAT phosphorylation promoted cell proliferation in *IDH* mut AML cells

(A) Mass cytometry analysis in *IDH* WT and *IDH1/2* mut AML patient cells. Samples derived from 2-4 patients in each genotype were analyzed. Lineage negative cells were gated and analyzed for indicated proteins. Relative expression of each protein was indicated as a Z-score. (B) Live cell number of *IDH2* WT or *IDH2* mut TF-1 cells cultured with GM-CSF treated without (DMSO) or with a mut IDH2-specific inhibitor (AG-221) *in vitro* (n=3). (C) mRNA expression level of STAT5 target genes in *IDH2* WT and *IDH2* mut TF-1 cells treated without (DMSO) or with AG-221 for 10 days. Expression level is shown in RPKM. * $p < 0.05$, ** $p < 0.01$, *** $p < 0.001$ (two-tailed *t*-test).