

ASGR1 deficiency directs lipids towards adipose tissue in obesity.

Monika Svecla¹, Lorenzo Da Dalt¹, Annalisa Moregola¹, Jasmine Nour¹, Andrea Baragetti¹, Patrizia Uboldi¹, Elena Donetti², Lorenzo Arnaboldi¹, Giangiacomo Beretta³, Fabrizia Bonacina¹, Giuseppe Danilo Norata¹

¹Department of Pharmacological and Biomolecular Sciences, Università degli Studi di Milano, Milan, Italy.

²Department of Biomedical Science for Health, Università degli Studi di Milano, Italy. ³Department of Environmental Science and Policy, Università degli Studi di Milano, Milan, Italy.

Corresponding author:

Giuseppe Danilo Norata, Professor of Pharmacology, University of Milan, Via Balzaretti 9, 20133 Milan, Italy. E-mail: danilo.norata@unimi.it

Supplementary data

Supplemental content (this file):

Supplementary Figure S1 – Weight and energy metabolism.

Supplementary Figure S2 – Circulating glucose and lipid homeostasis.

Supplementary Figure S3 – Visceral adipose tissue metabolism.

Supplementary Figure S4 – Flow cytometry gating strategy for the analysis of innate immune cells.

Supplementary Figure S5 – Flow cytometry gating strategy for the analysis of adaptive immune cells.

Supplementary Figure S6 – VAT and liver immunophenotyping.

Supplementary Figure S7 – Liver lipids and metabolism.

Supplemental content (excel file):

Supplementary Table S1 – List of fluorescent-conjugated antibodies

Supplementary Table S2 – The LFQ-abundance of visceral adipose tissue proteome

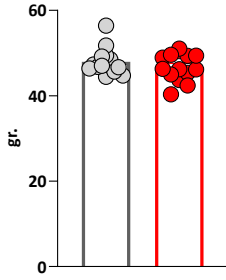
Supplementary Table S3 – The LFQ-abundance of liver proteome

Supplementary Table S4 – The sequences of the mouse qPCR primers

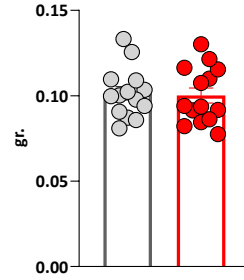
Supplementary Figure S1

● WT
● ASGR1^{-/-}

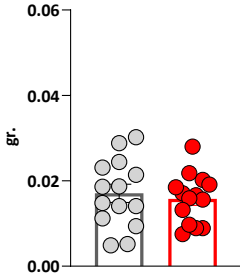
A. Total body weight



B. Spleen



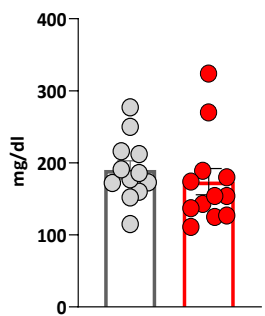
C. mLN



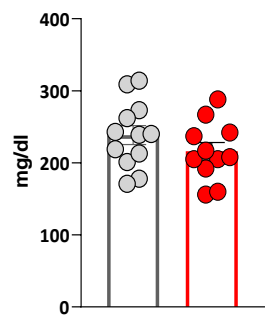
Supplementary Figure S2

● WT
● ASGR1^{-/-}

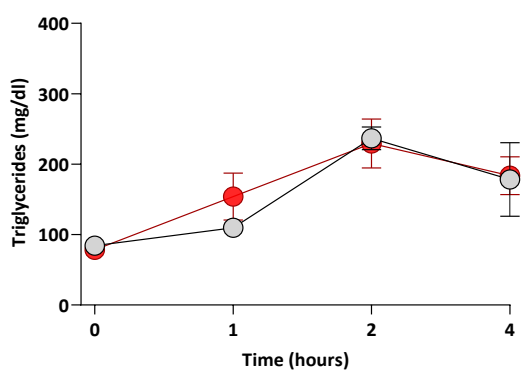
A. Basal glucose after 14h of fasting



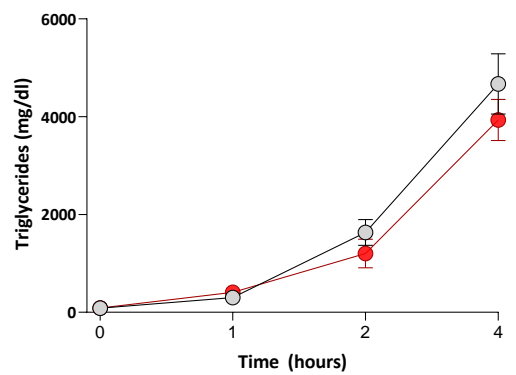
B. Basal glucose after 4h of fasting



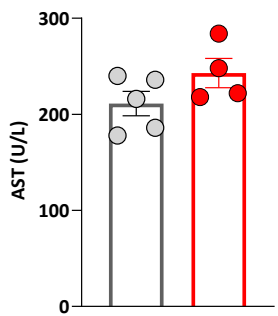
C. Oral fat load



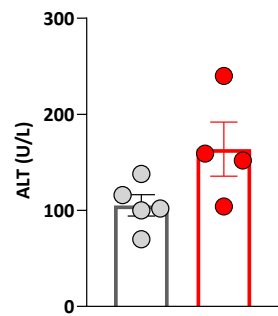
D. VLDL secretion



E. Plasma AST

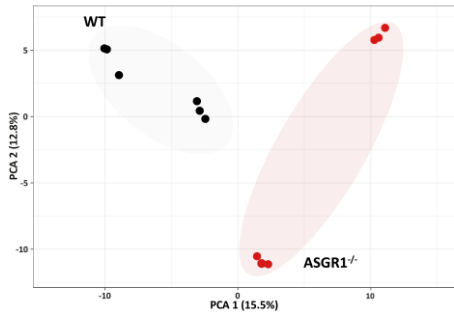


F. Plasma ALT

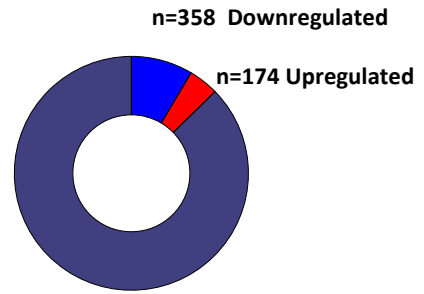


Supplementary Figure S3

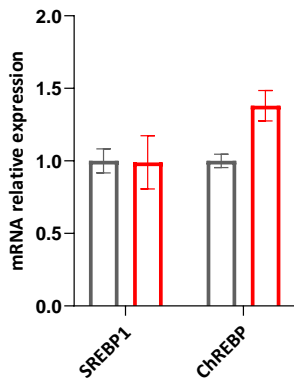
A.



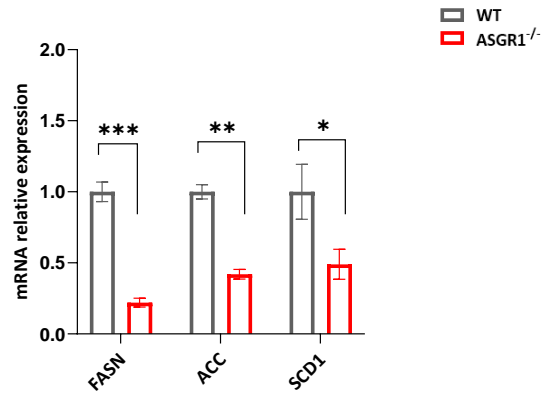
B.



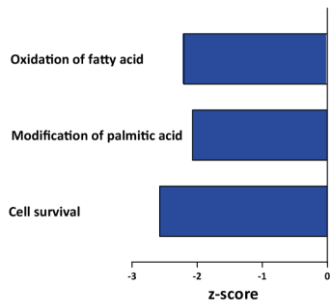
C.



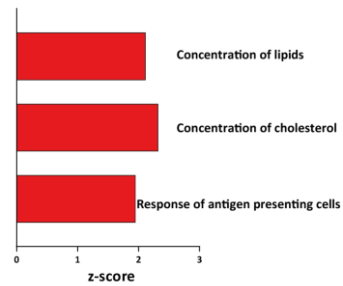
D.



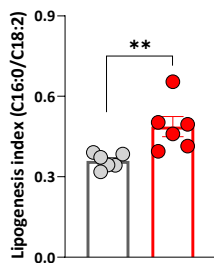
E.



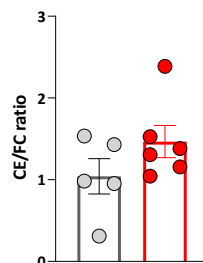
F.



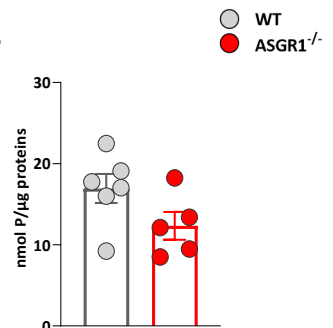
G.



H.



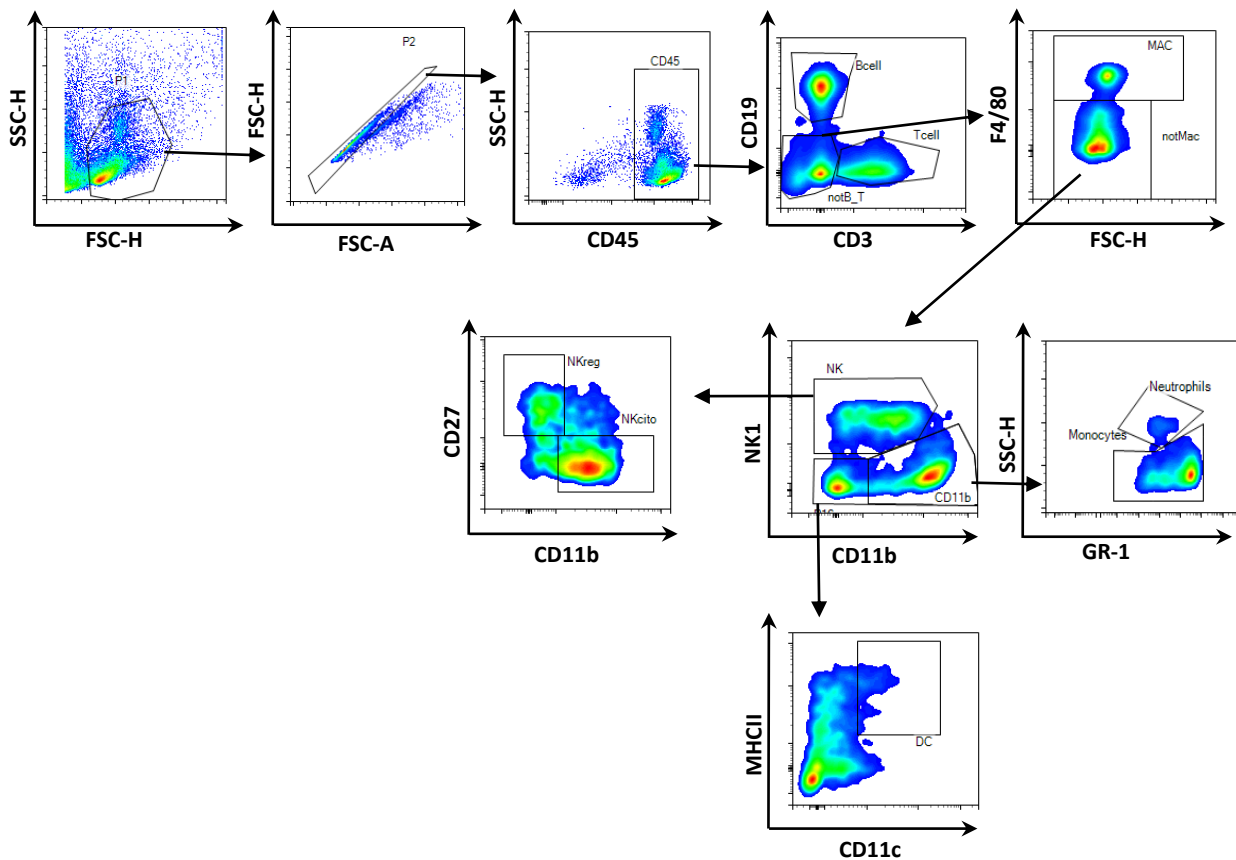
I.



Supplementary Figure S3 – Visceral adipose tissue metabolism

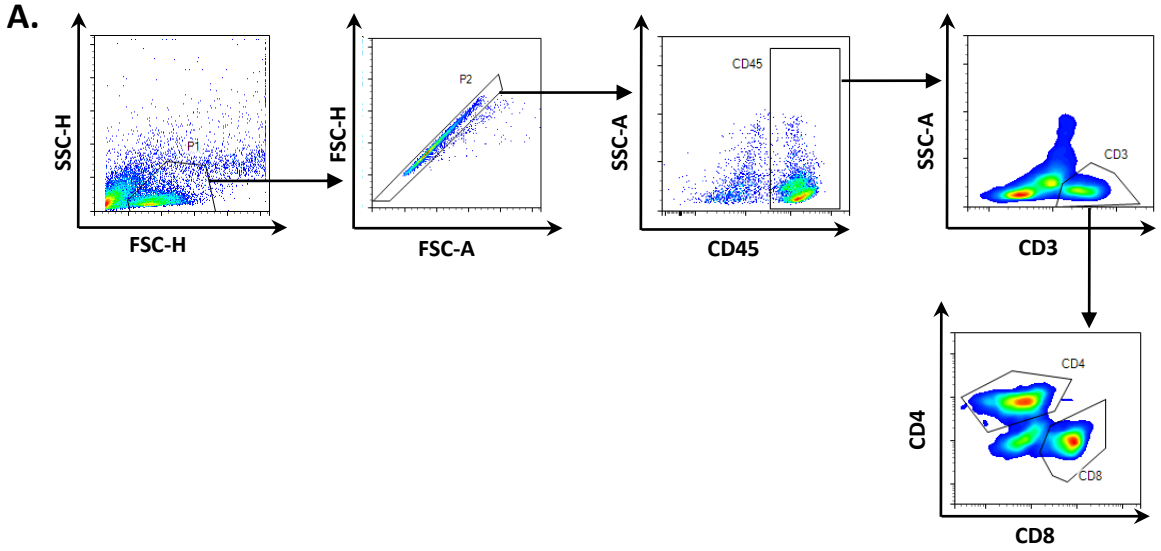
Supplementary Figure S4

A.



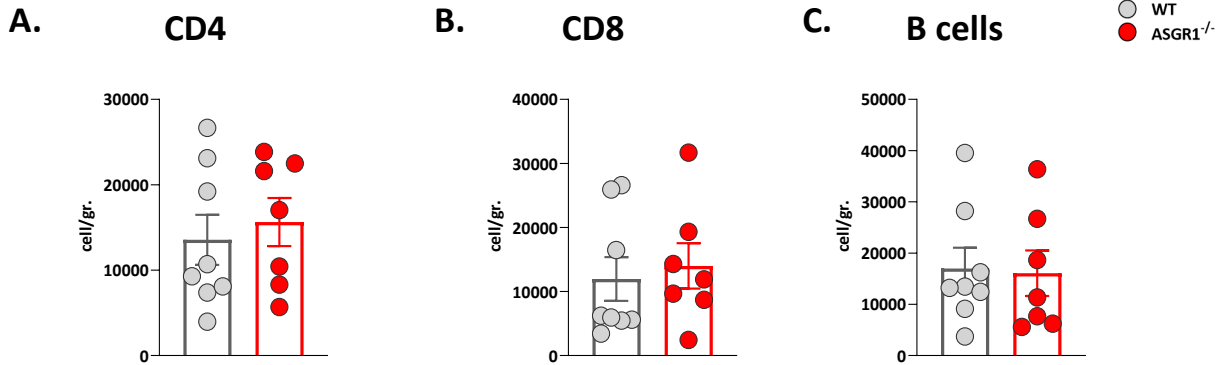
Supplementary Figure S4 –Flow cytometry gating strategy for the analysis of innate immune cells.

Supplementary Figure S5

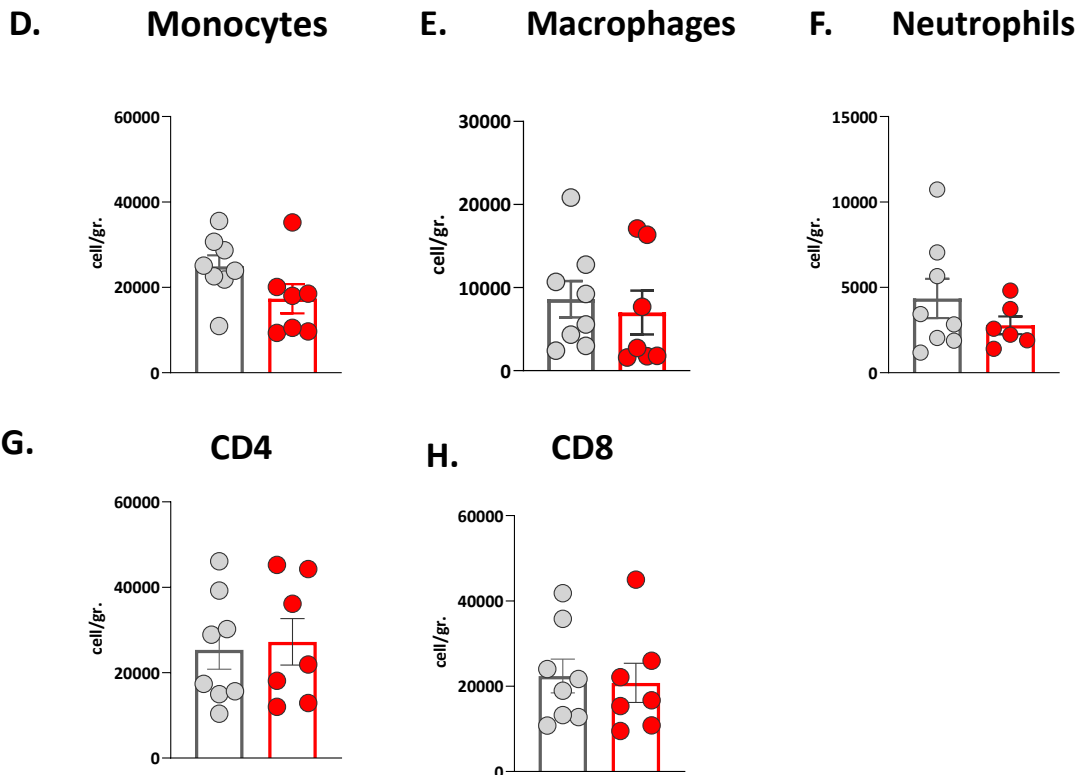


Supplementary Figure S5 – Flow cytometry gating strategy for the analysis of adaptive immune cells.

VAT immunophenotyping

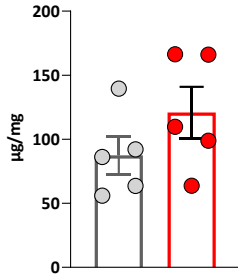


Liver immunophenotyping

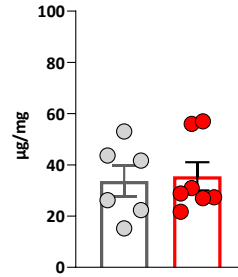


Supplementary Figure S7

A. Liver cholesterol

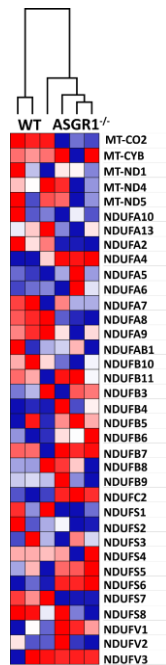


B. Liver triglycerides

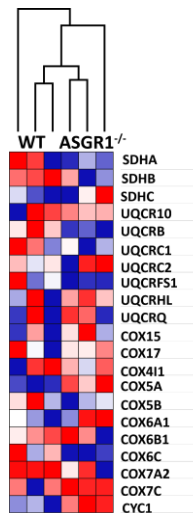


○ WT
● ASGR1^{-/-}

C.



D.



E.

