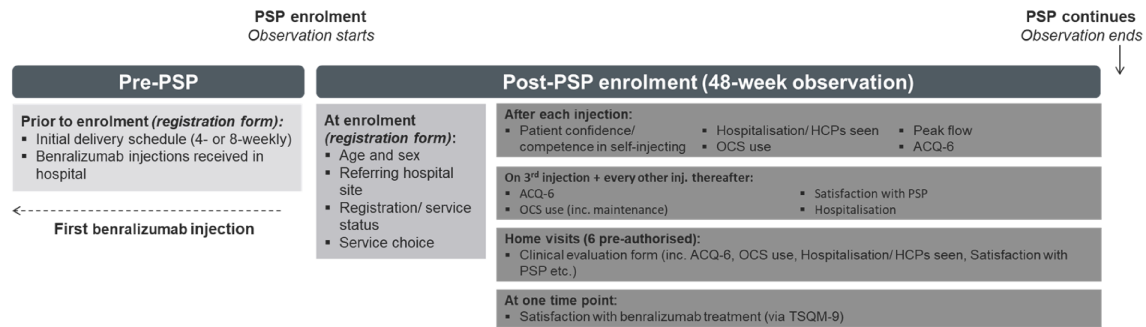


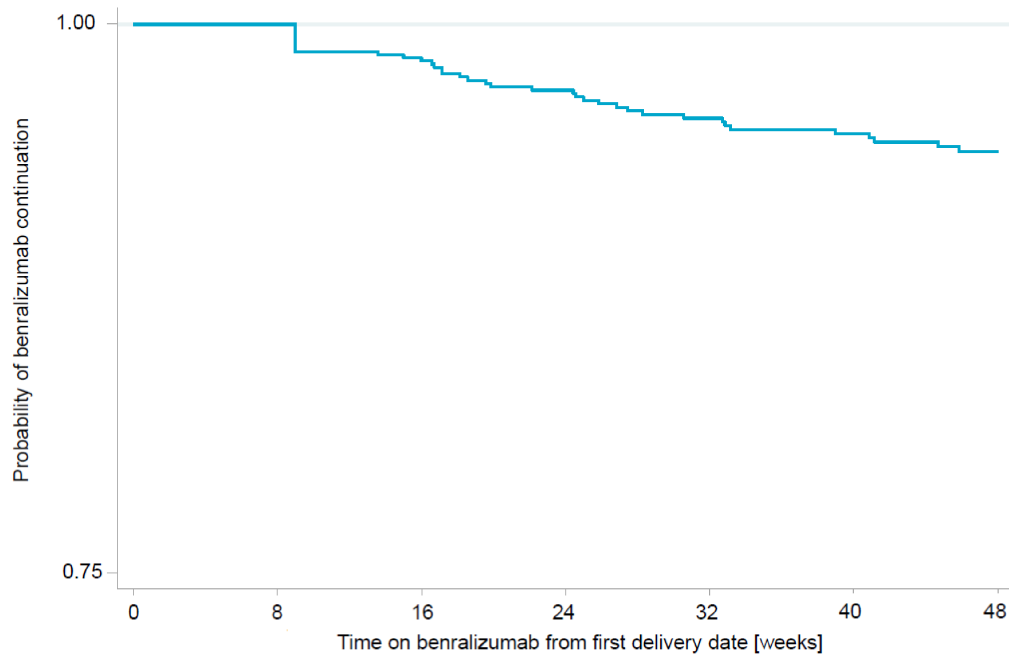
Supplementary Figures and tables

Figure S1. Study design



ACQ-6, Asthma Control Questionnaire – 6-item; HCP, healthcare professional; OCS, oral corticosteroid; PSP, patient support programme, TSQM-9, Treatment Satisfaction Questionnaire for Medication– 9-item

Figure S2. Discontinuation of benralizumab post-enrolment



Supplementary Table 1. Sub-cohorts of patients based on combinations of nurse interactions post-PSP enrolment

Patients with data available from each source, n (%)	Baseline (0–4 weeks)	24 weeks (20–28 weeks)	48 weeks (40–56 weeks)
Registration form	746 (100)	-	-
Adherence check call	7 (0.9)	98 (13.1)	88 (11.8)
Nurse visit form	152 (20.4)	12 (1.6)	6 (0.8)
Ongoing/injection 3 call	45 (6.0)	152 (20.4)	257 (34.5)
Clinical cohort ^a	186 (24.9)	231 (31.0)	302 (40.5)
	Baseline AND 24 weeks	24 AND 48 weeks	Baseline AND 48 weeks
Clinical cohort ^a	69 (9.3)	126 (16.9)	56 (7.5)
	Baseline TO 24 weeks	-	Baseline TO 48 weeks
Adherence cohort ^b	297 (39.8)	-	198 (26.5)
Persistence cohort ^c	643 (86.2)	-	443 (59.4)
Remain within PSP	643 (86.2)	-	443 (59.4)

^aClinical cohort: Adherence check call OR nurse visit form OR ongoing/injection 3 call OR ACQ-6 call

^bAdherence cohort: Adherence check call OR nurse visit form AND remain within PSP

^cPersistence cohort: Adherence check call OR nurse visit form OR sales/delivery data AND remain within PSP
ACQ-6, Asthma Control Questionnaire – 6-item; PSP, Patient support programme