

Supplemental Online Content

Colaizy TT, Poindexter BB, McDonald SA, et al; MILK Trial Investigators; Eunice Kennedy Shriver National Institute of Child Health and Human Development Neonatal Research Network. Neurodevelopmental outcomes of extremely preterm infants fed donor milk or preterm infant formula: a randomized clinical trial. Published online January 30, 2024. *JAMA*. doi:10.1001/jama.2023.27693

eTable. Neurodevelopmental Outcomes of Survivors Only

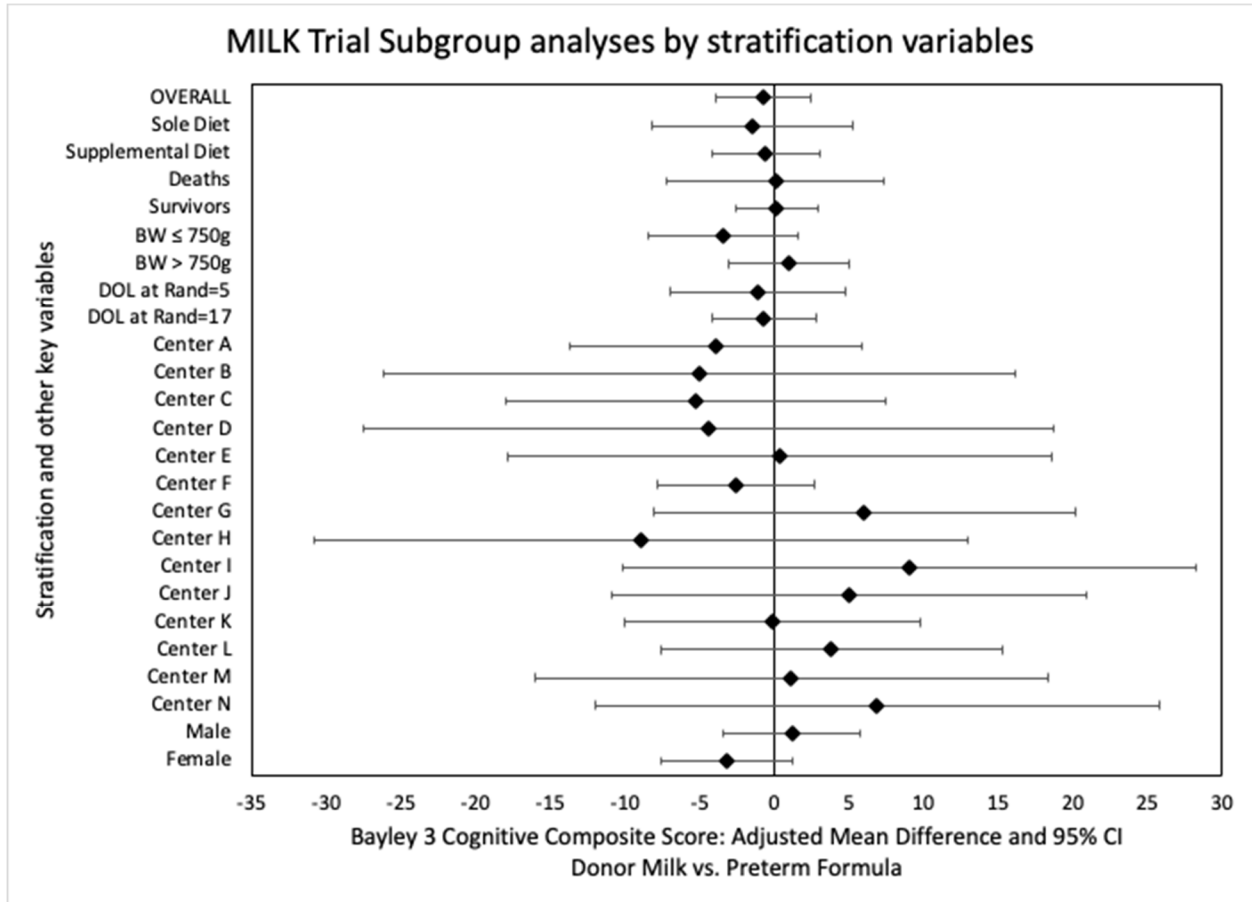
eFigure. Subgroup analyses of Bayley III Cognitive Score (primary outcome) by stratification variables

This supplemental material has been provided by the authors to give readers additional information about their work.

eTable. Neurodevelopmental Outcomes of Survivors Only

	n	Donor Milk N=210	Preterm Formula N=219	Effect, 95% CI ** (donor milk vs. formula)	
Bayley-III Composite Scores[†], mean (SD) median (IQR)					
All survivors				Adjusted Mean Difference	95% CI
Cognitive	369	85.1 (14.8) 85 (75, 95)	84.7 (14.3) 85 (75,95)	0.12	-2.80, 3.05
Motor	361	86.4 (16.9) 88 (79, 94)	84.8 (15.9) 88 (73, 97)	0.95	-2.46, 4.36
Language	361	81.8 (16.3) 86 (71, 91)	79.8 (16.0) 79 (68, 91)	1.81	-1.45, 5.06
Sole diet cohort survivors				Adjusted Mean Difference	
Cognitive	79	87.9 (12.4) 90 (85, 90)	85.1 (15.8) 85 (75, 95)	0.81	-5.74, 7.36
Motor	78	87.9 (14.8) 91 (82, 94)	83.0 (16.6) 85 (73-94)	2.26	-5.31, 9.84
Language	79	88.6 (14.7) 89 (86, 94)	82.2 (16.6) 83 (71, 91)	5.63	-1.20, 12.5
Categorical Outcomes of all Survivors					
Bayley-III < 85				Adjusted RR	95% CI
Cognitive	369	66 (37%)	81 (42%)	0.90	0.71, 1.15
Motor	361	61 (35%)	77 (41%)	0.90	0.70, 1.17
Language	361	86 (49%)	109 (58%)	0.84	0.70, 1.02
Bayley-III < 70					
Cognitive	369	22 (12%)	26 (14%)	0.95§	0.72, 1.26
Motor	361	20 (12%)	33 (18%)	0.68§	0.47, 0.99
Language	361	35 (20%)	47 (25%)	0.82	0.57, 1.19
NDI level	365				
No/mild	179	88 (50%)	91 (48%)		
Moderate	114	58 (33%)	56 (30%)		
Severe	72	30 (17%)	42 (22%)		
Moderate/severe NDI	366	89 (50%)	98 (52%)	0.99	0.82, 1.20

eFigure. Subgroup analyses Bayley III Cognitive score by stratification and other key variables



- Sole Diet = no maternal milk intake
- Supplemental Diet = minimal maternal milk intake
- Day of life at randomization = 5 (DOL at Rand=5) = Infants randomized on day of life 5, the median day of randomization for all infants randomized prior to their first feeding.
- Day of life at randomization = 17 (DOL at Rand=17) = Infants randomized on day of life 17, the median day of randomization for all infants randomized after their first feeding.