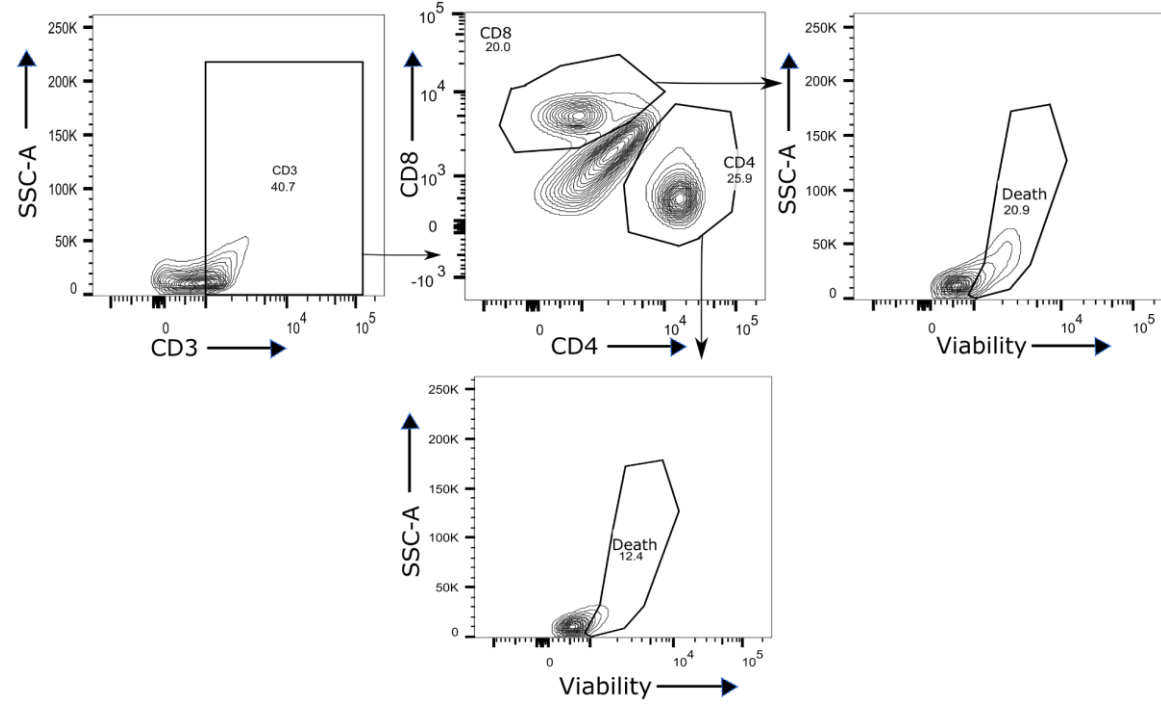
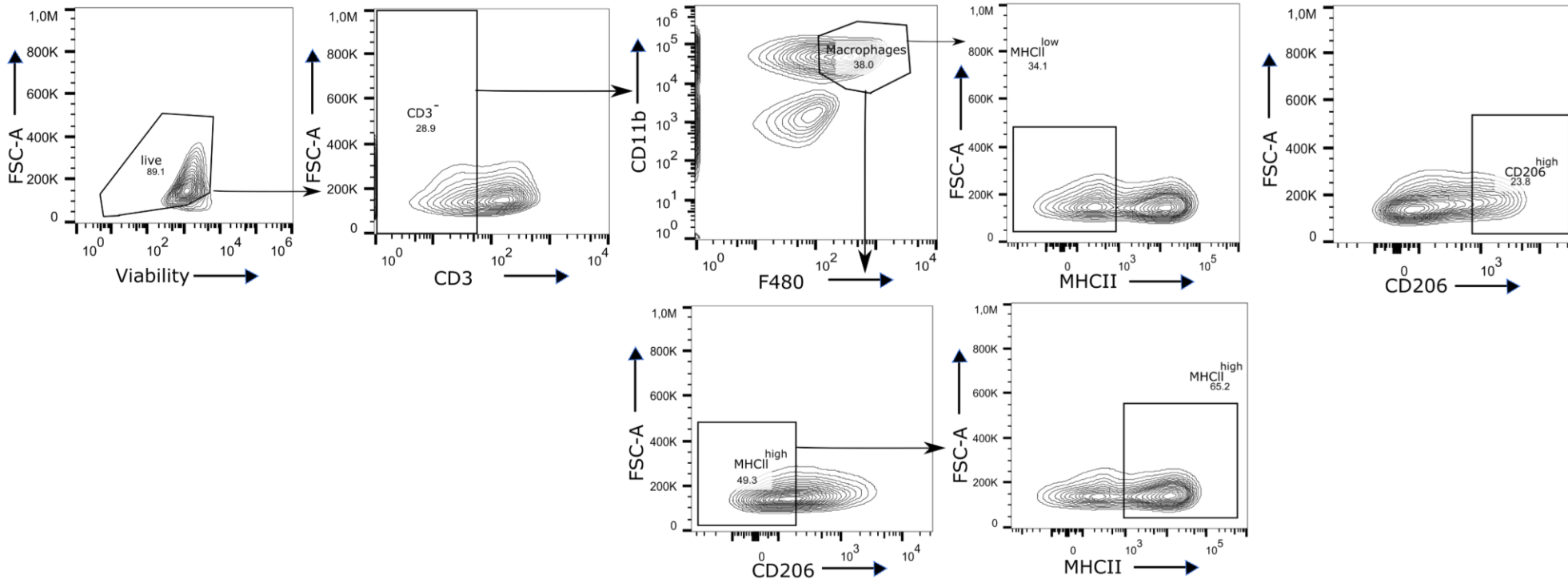


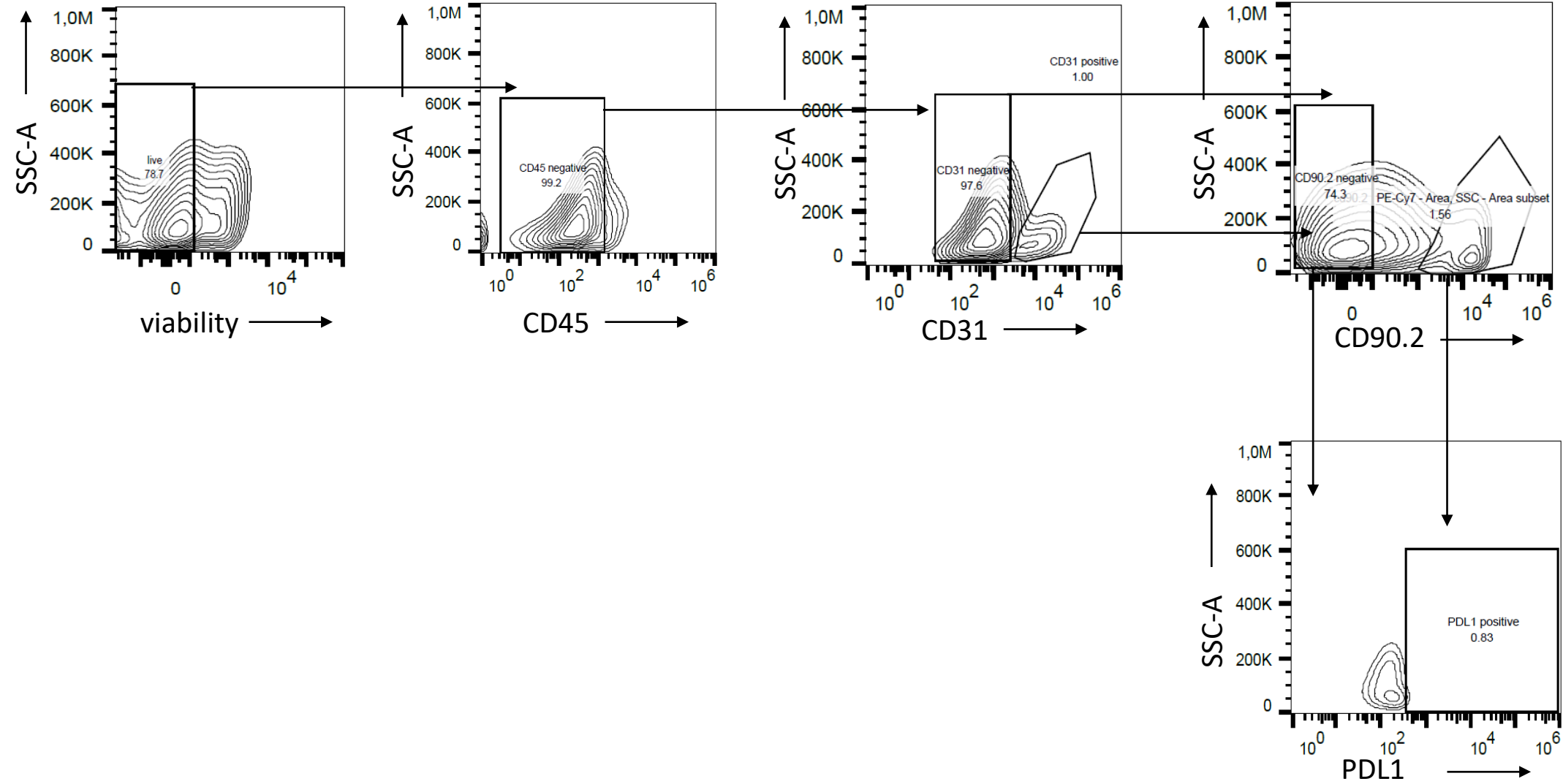
Gating strategy dying/dead CD4⁺ and CD8⁺ T cells



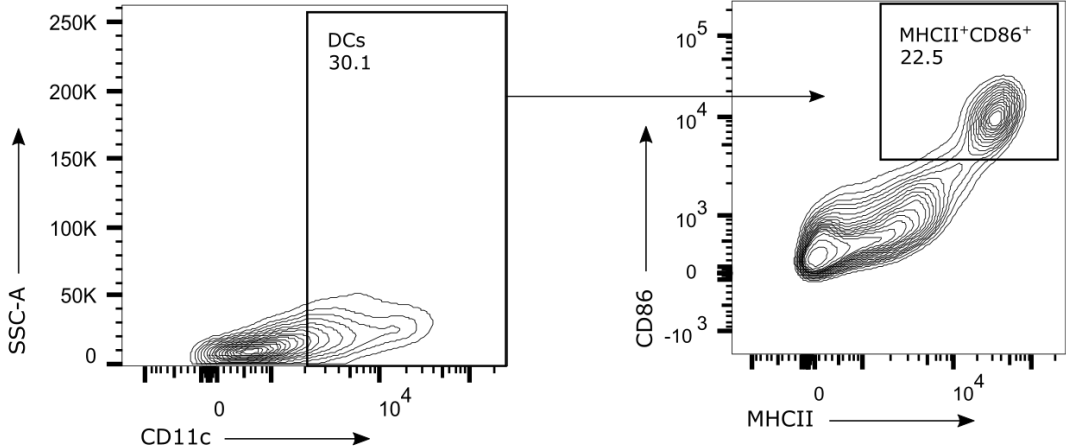
Gating strategy M1 and M2 macrophages



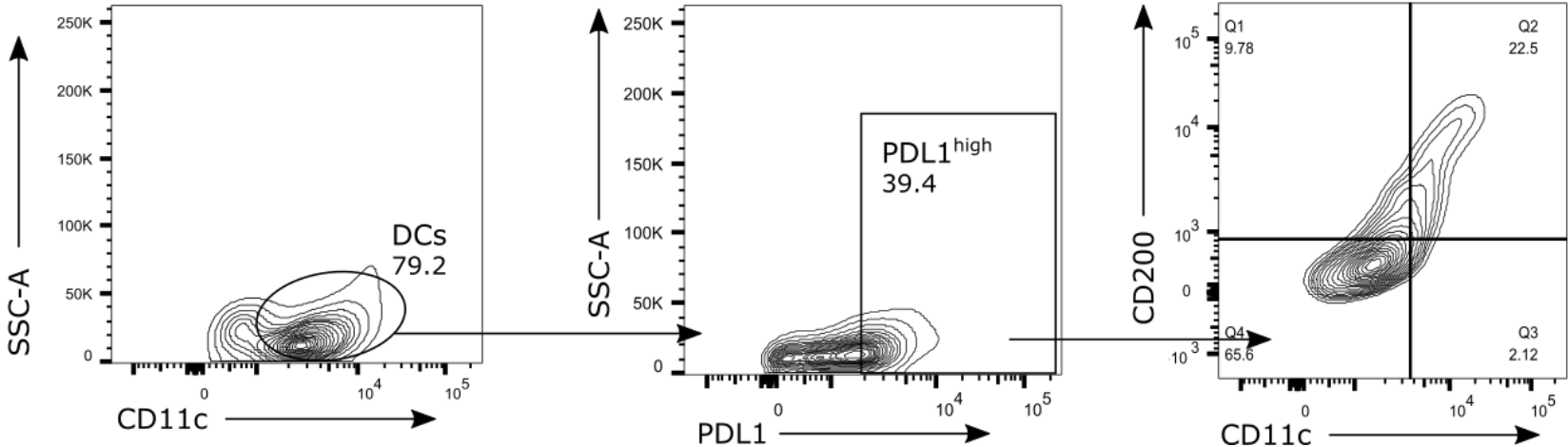
Gating strategy Fibroblasts, endothelial cells and tumoural cells



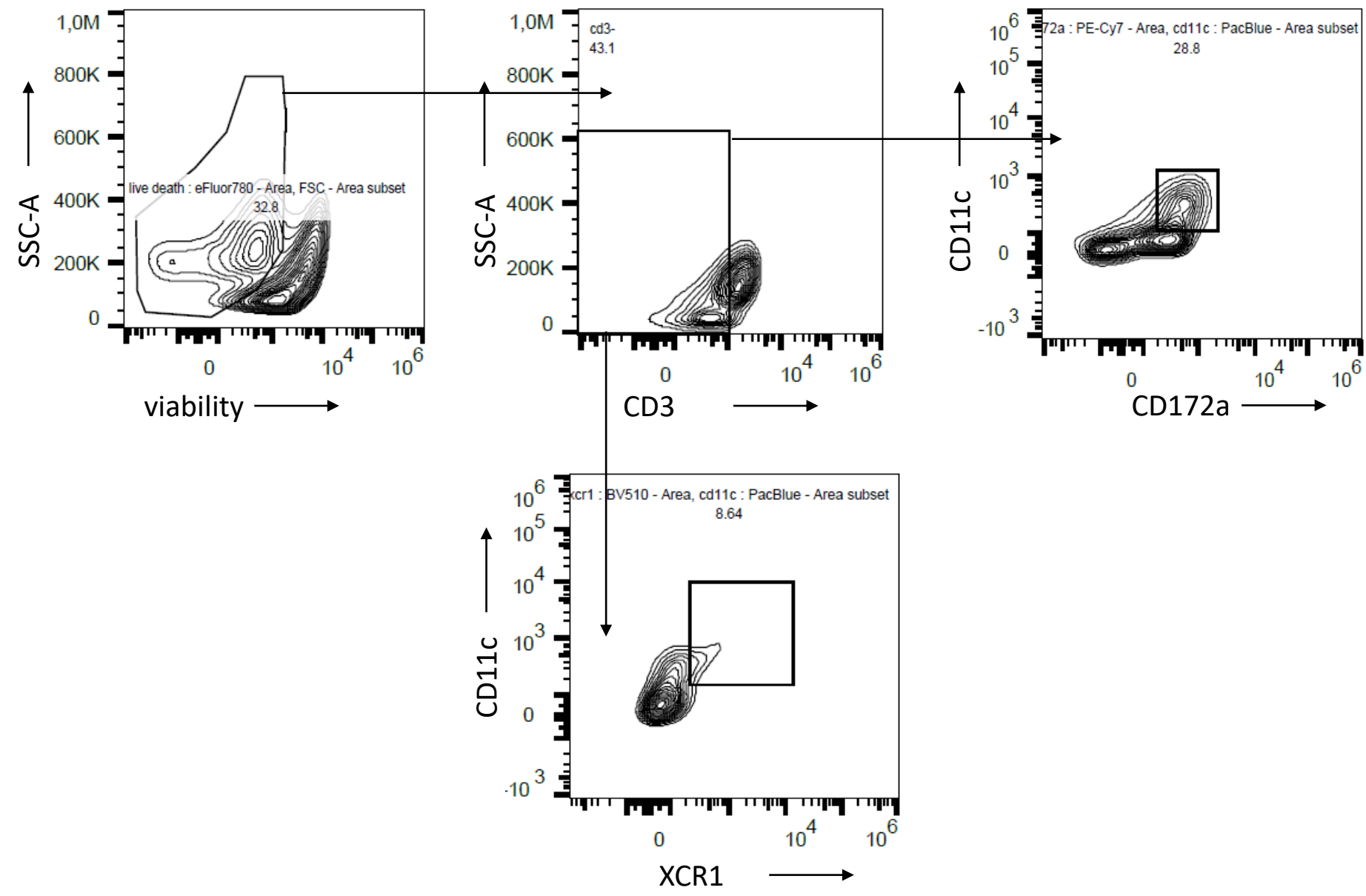
Gating strategy mature DCs



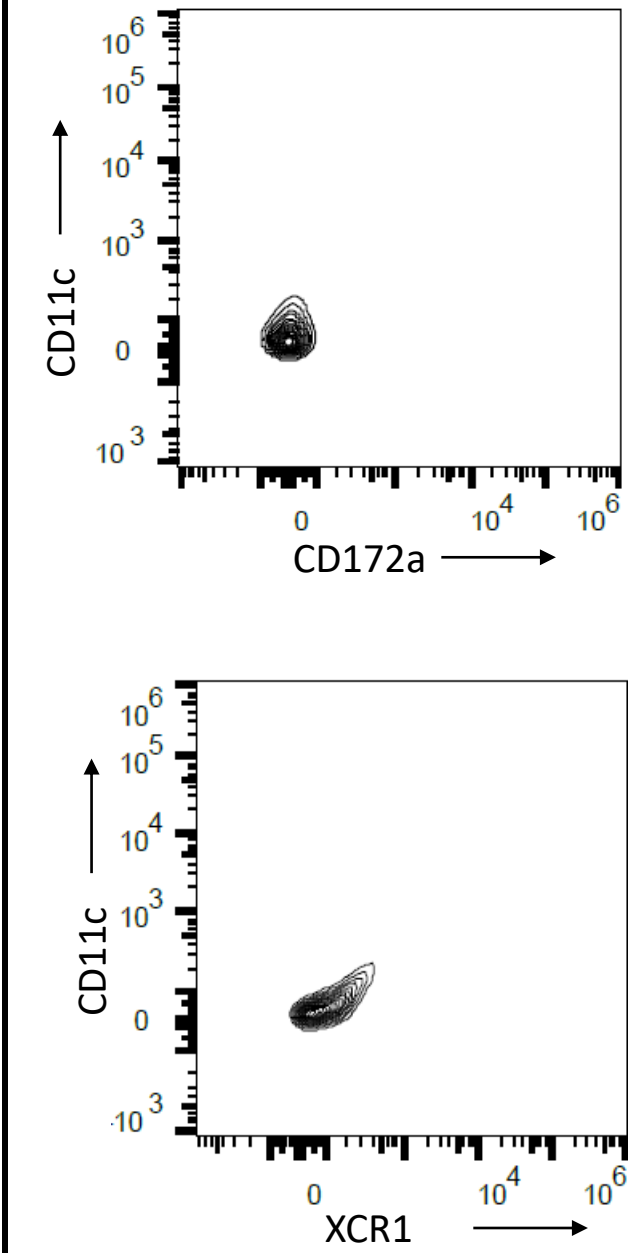
Gating strategy mregDCs



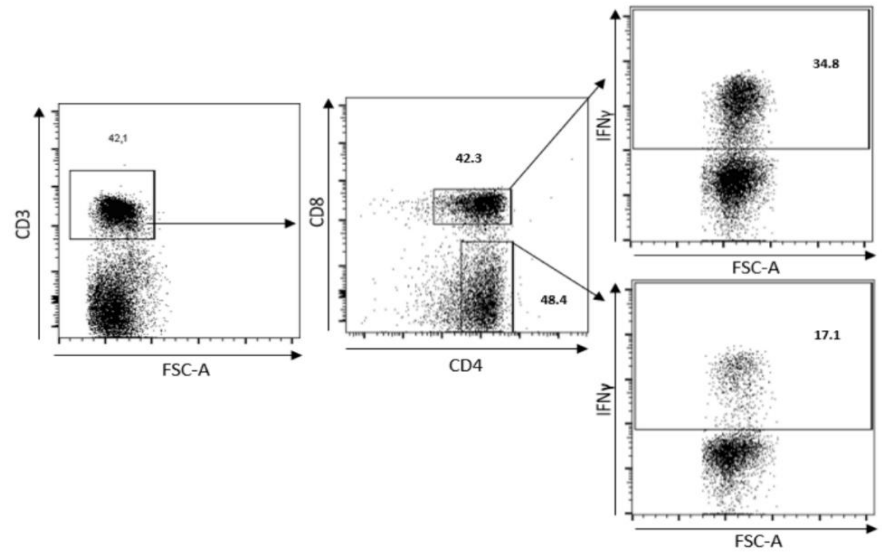
Gating strategy cDC1 and cDC2



US



Gating strategy human T cells



Gating strategy TNF, TRAIL and FASL TAMs

