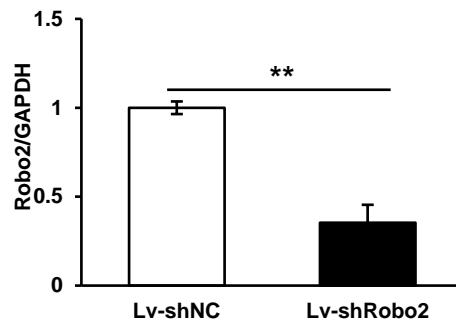
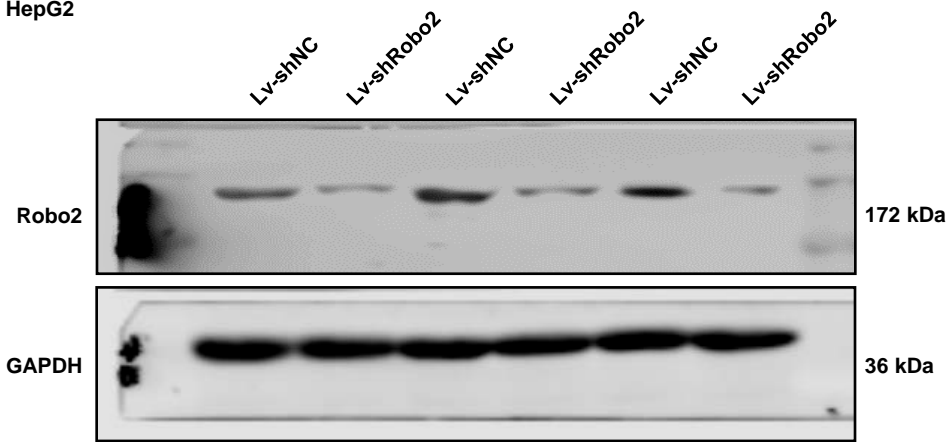
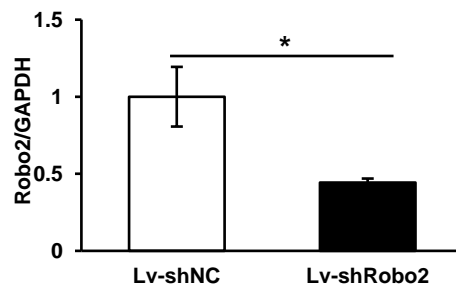
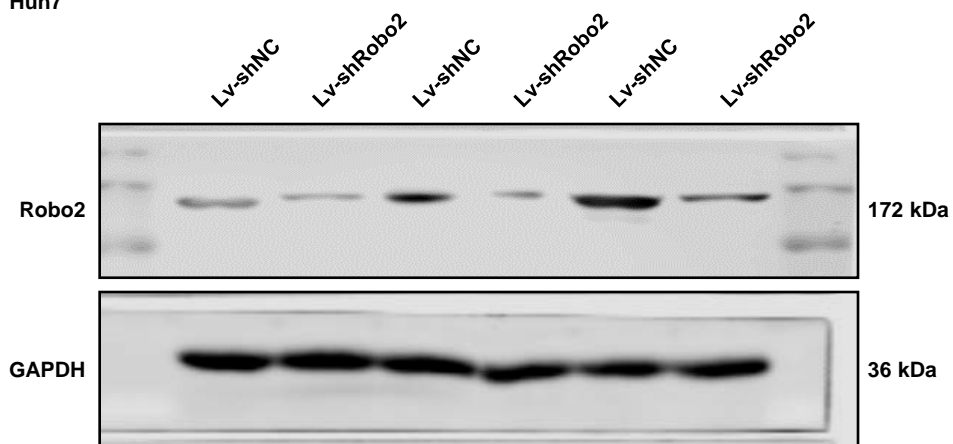
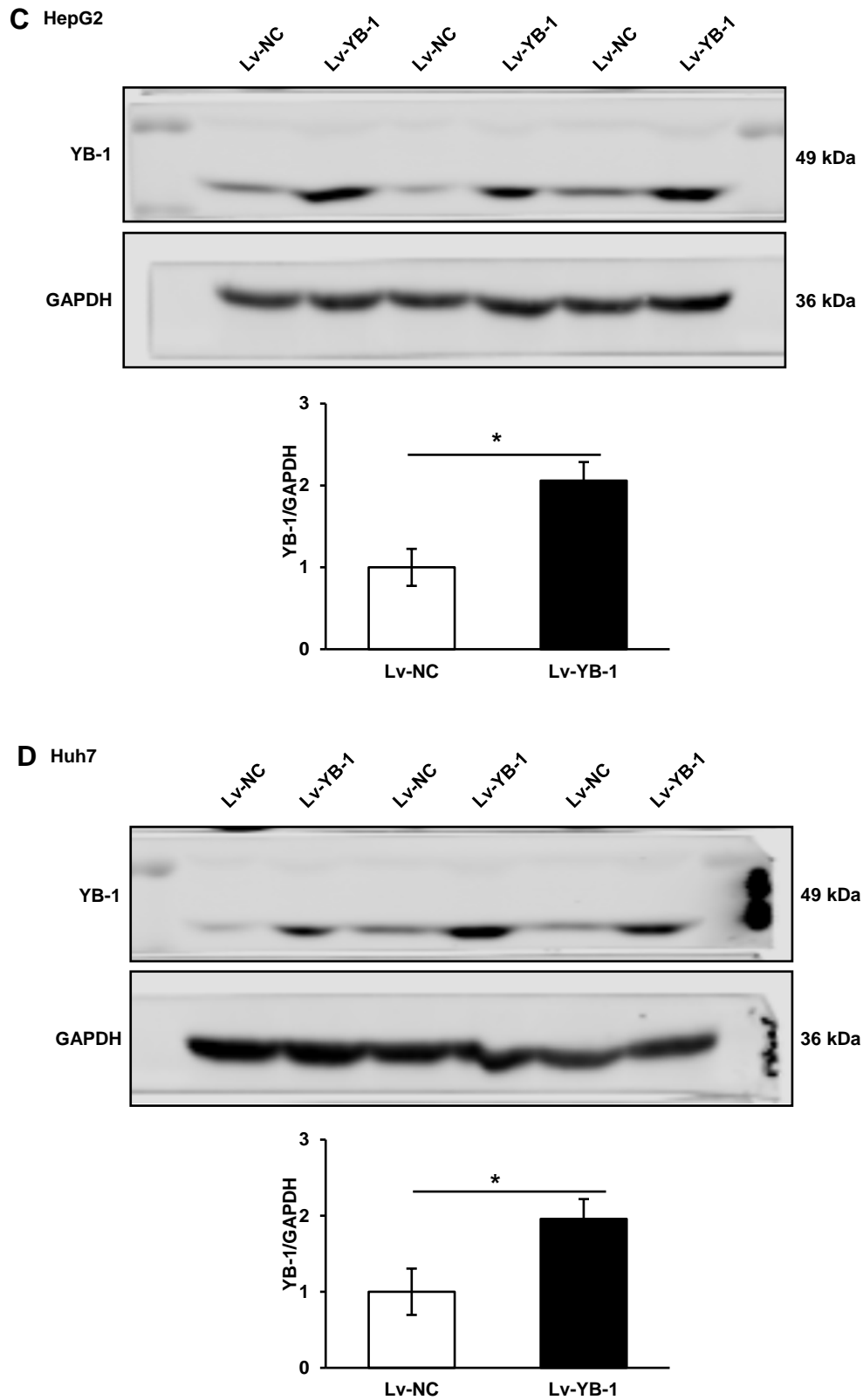


**A** HepG2



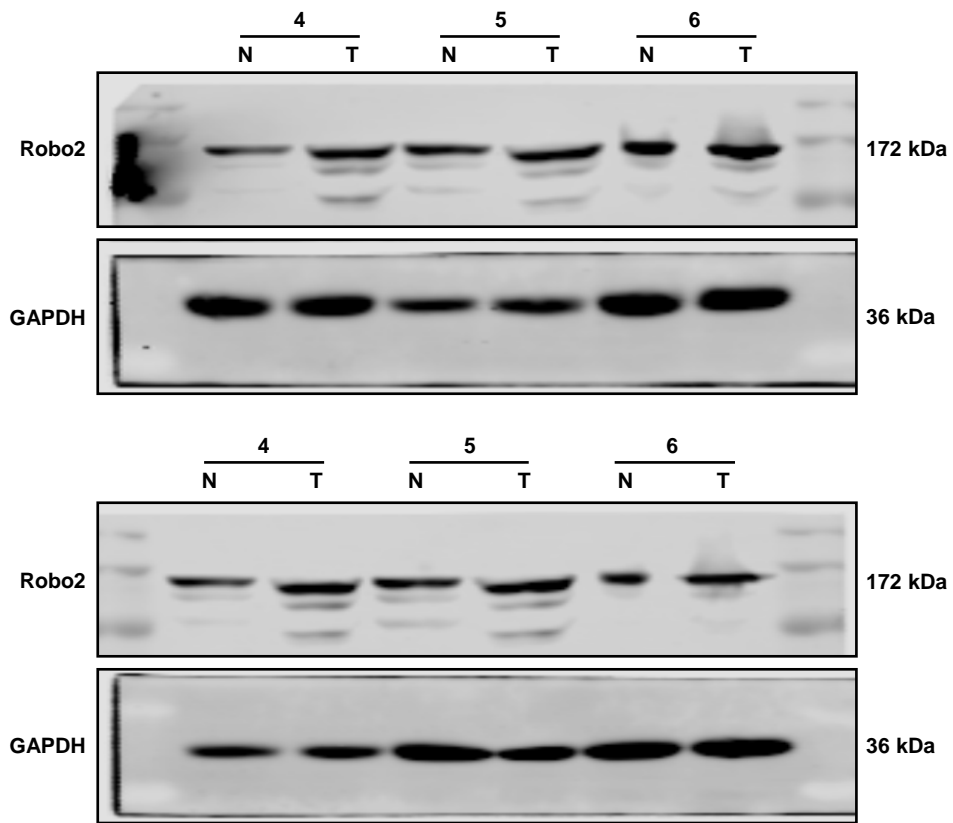
**B** Huh7





**Supplementary Figure 1 Detection of the transfection efficiency of knock-down Robo2 and over-expression YB-1.** (A-D) The transfection efficiency of knock-down Robo2 and over-expression YB-1 in HepG2 and Huh7 cells was detected by Western blot assay. Robo2 and YB-1 protein levels (normalized to GAPDH) were measured by scanning densitometry. \*  $P < 0.05$ , \*\*  $P < 0.01$  vs indicated groups. The samples derive from the same experiment and that blots were processed in parallel.

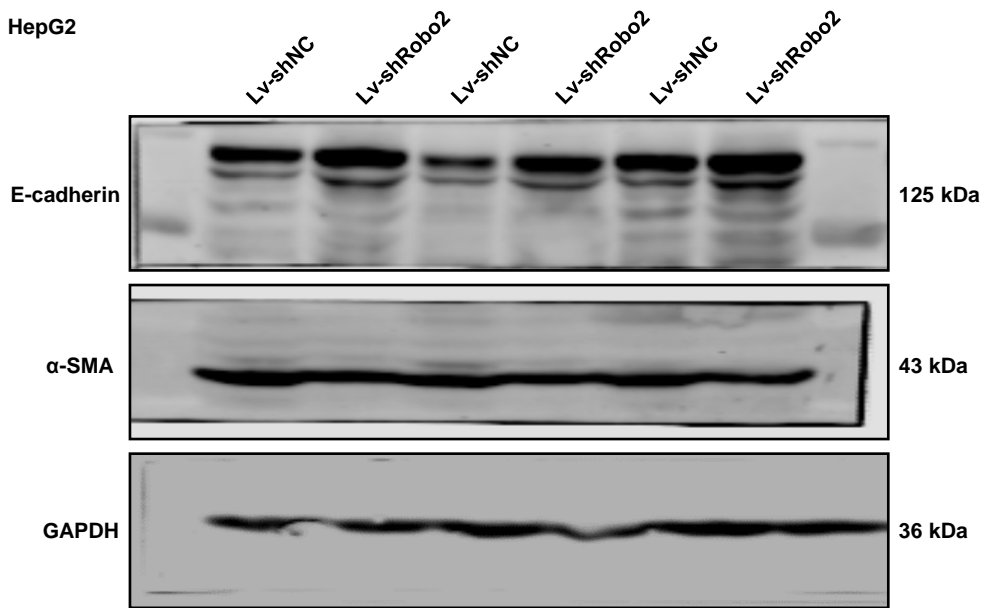
Fig. 1



**Supplementary Figure 2 Original blots in Fig. 1.** The samples derive from the same experiment and that blots were processed in parallel.

Fig. 2

HepG2



Huh7

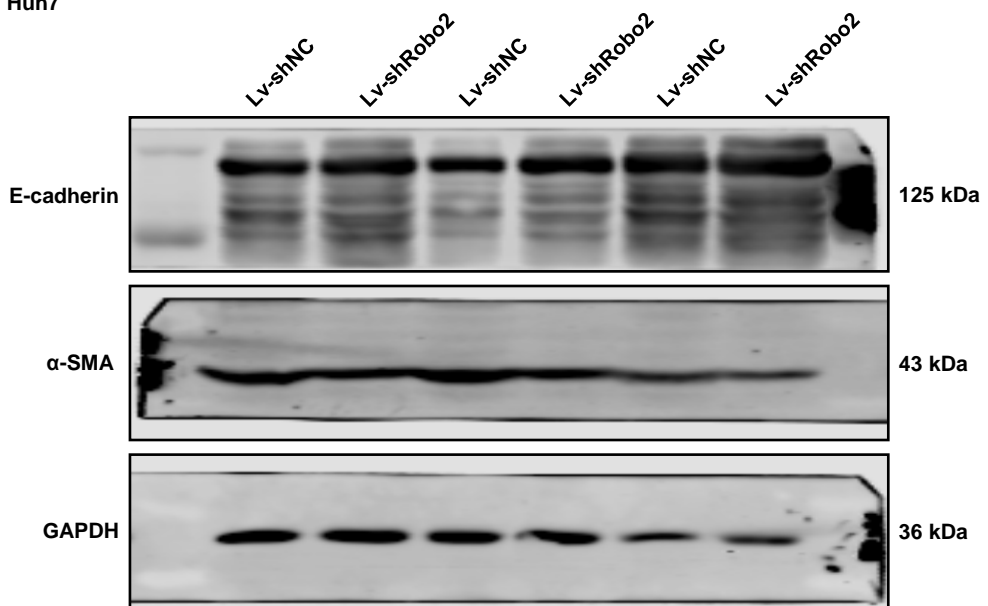
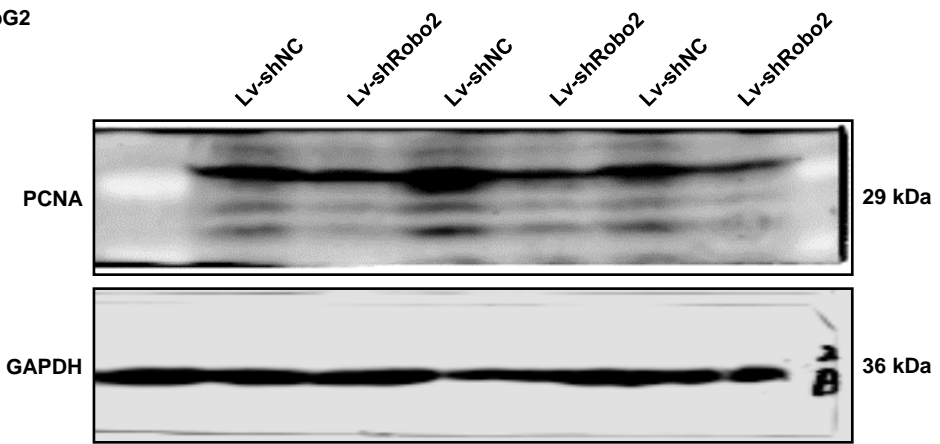
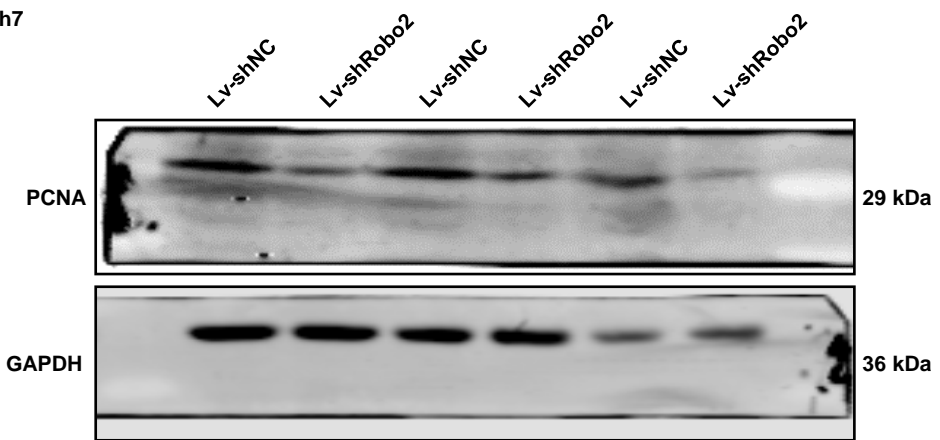


Fig. 2

HepG2

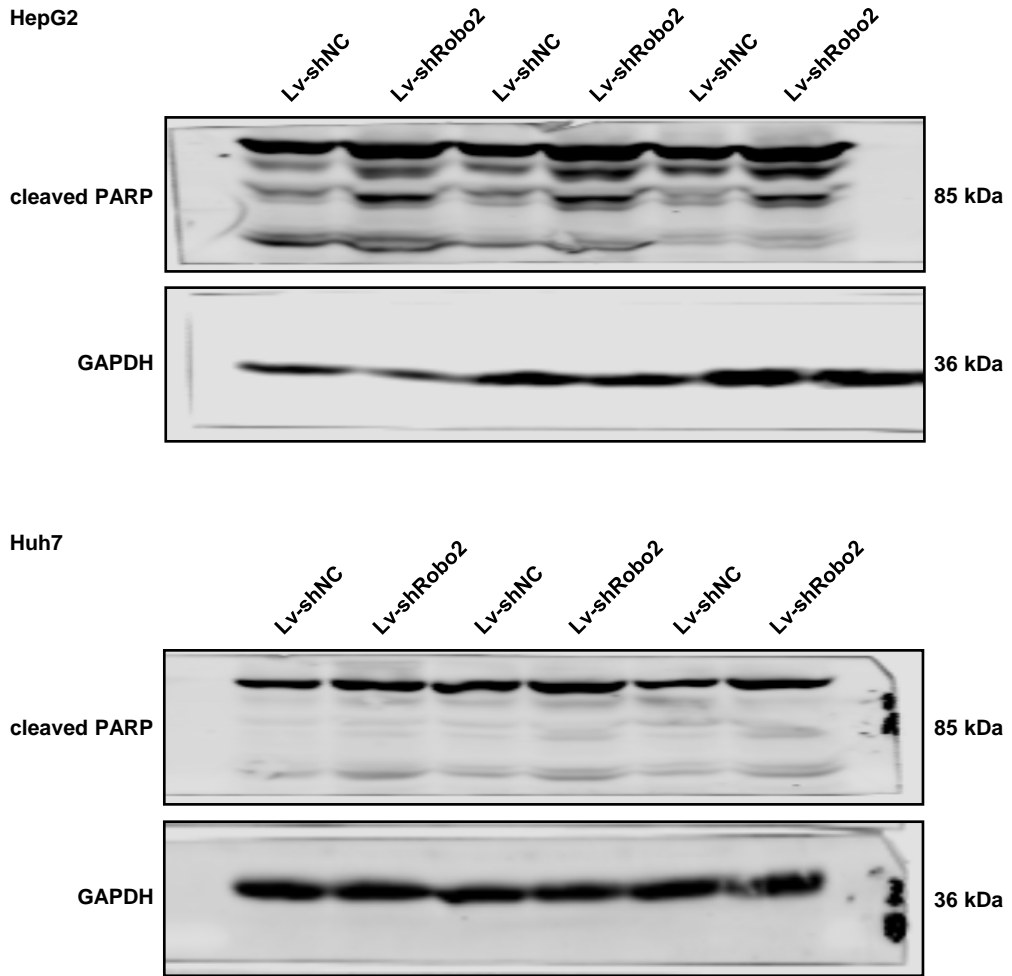


Huh7



**Supplementary Figure 3 Original blots in Fig. 2.** The samples derive from the same experiment and that blots were processed in parallel.

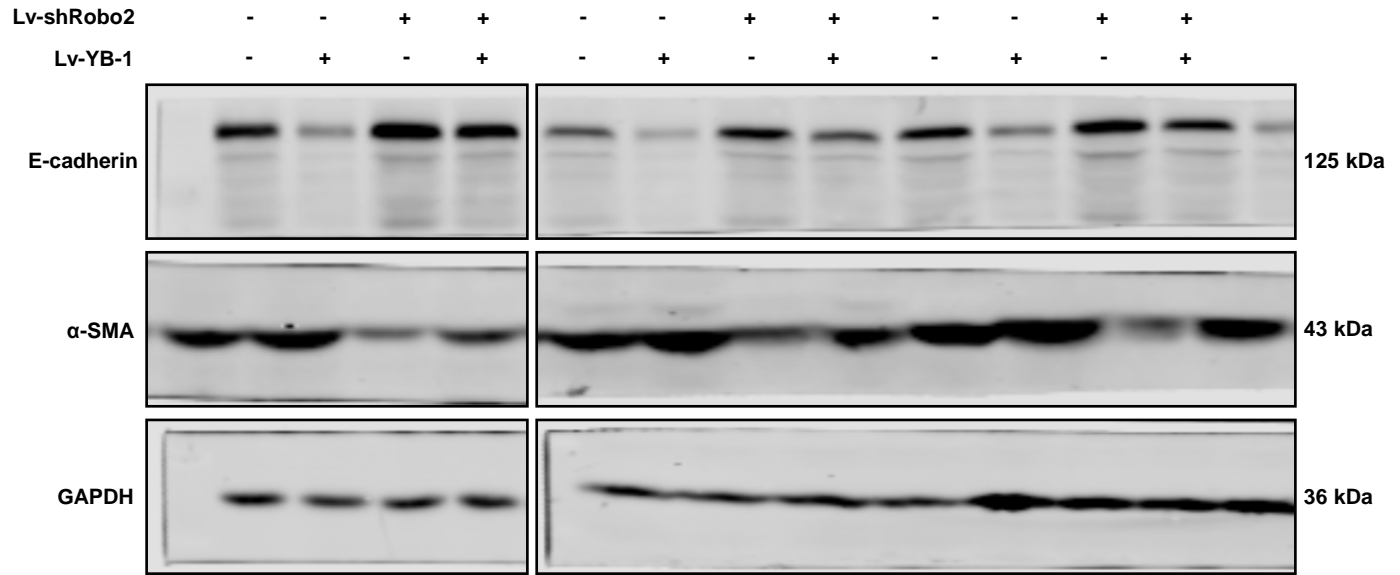
Fig. 3



**Supplementary Figure 4 Original blots in Fig. 3.** The samples derive from the same experiment and that blots were processed in parallel.

Fig. 5

HepG2



Huh7

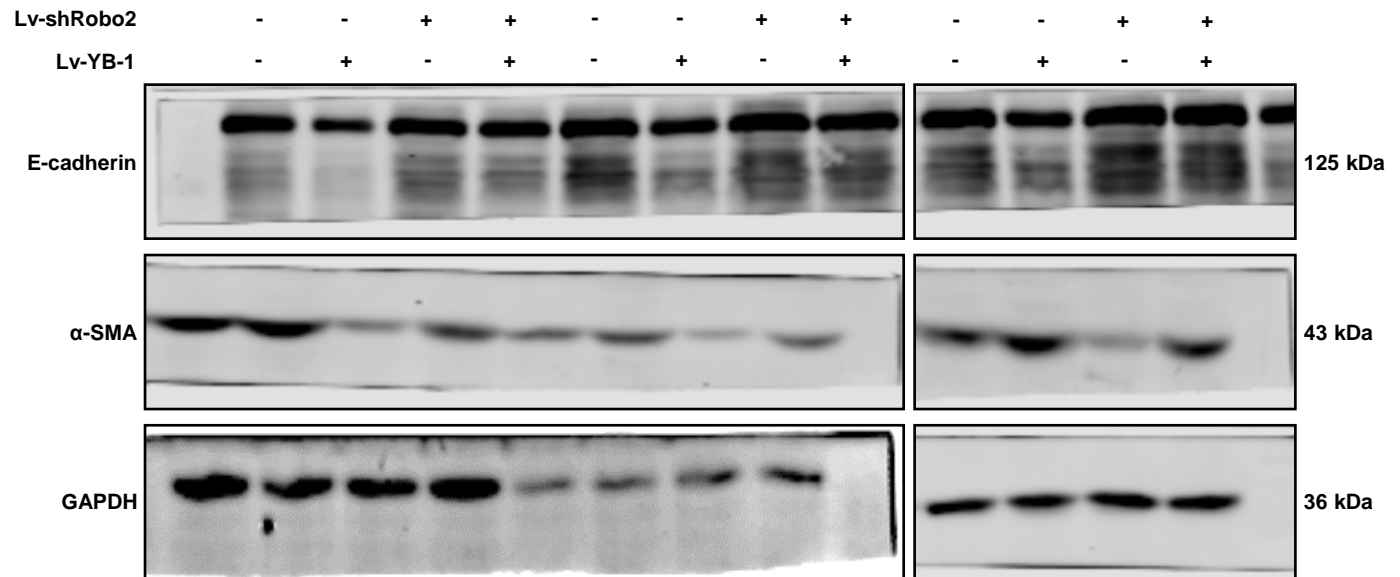


Fig. 5

HepG2

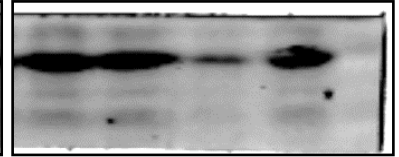
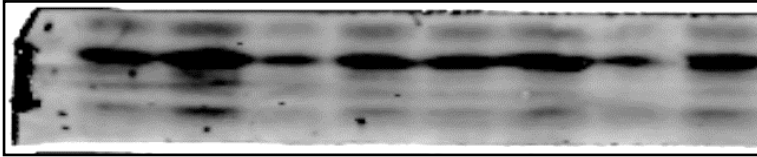
Lv-shRobo2

- - + + - - + + - - + +

Lv-YB-1

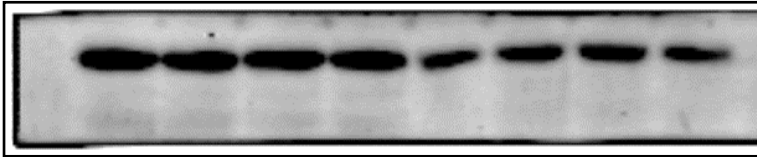
- + - + - + - + - + - +

PCNA



29 kDa

GAPDH



36 kDa

Huh7

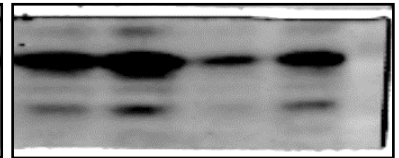
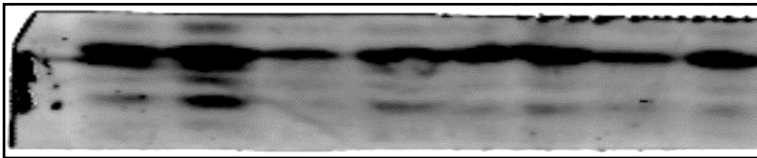
Lv-shRobo2

- - + + - - + + - - + +

Lv-YB-1

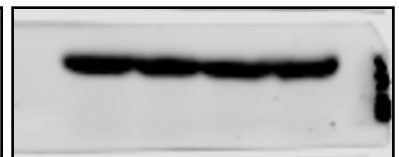
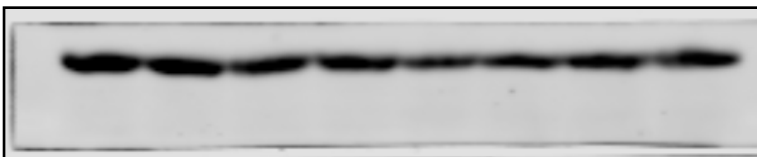
- + - + - + - + - + - +

PCNA



29 kDa

GAPDH



36 kDa

Supplementary Figure 5 Original blots in Fig. 5. The samples derive from the same experiment and that blots were processed in parallel.



Fig. 6

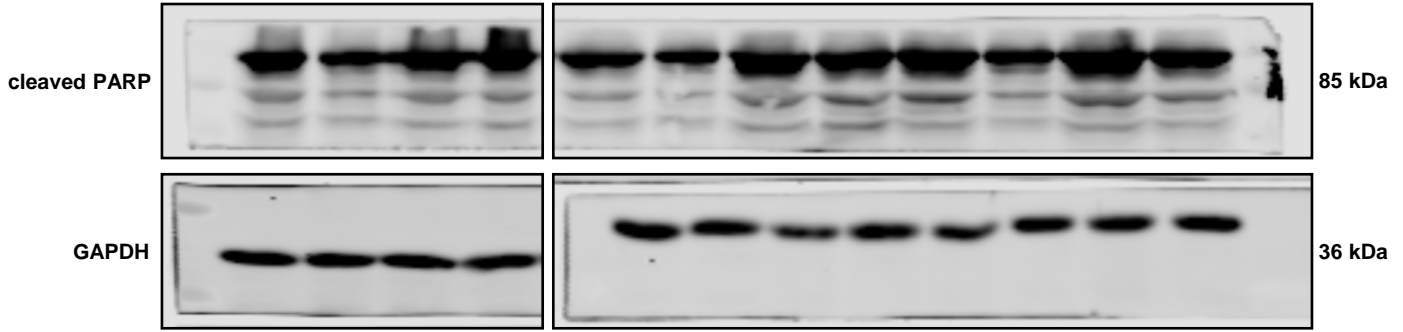
HepG2

Lv-shRobo2

- - + + - - + + - - + +

Lv-YB-1

- + - + - + - + - + - +



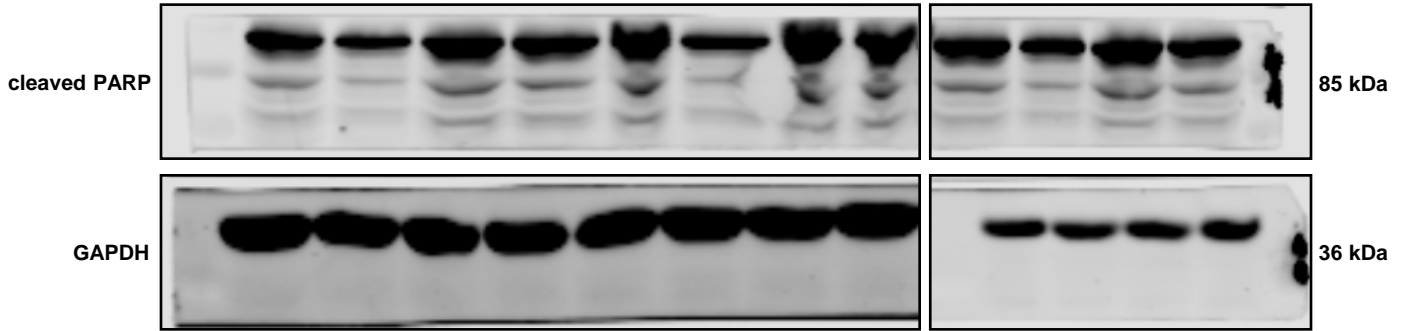
Huh7

Lv-shRobo2

- - + + - - + + - - + +

Lv-YB-1

- + - + - + - + - + - +



**Supplementary Figure 6 Original blots in Fig. 6.** The samples derive from the same experiment and that blots were processed in parallel.