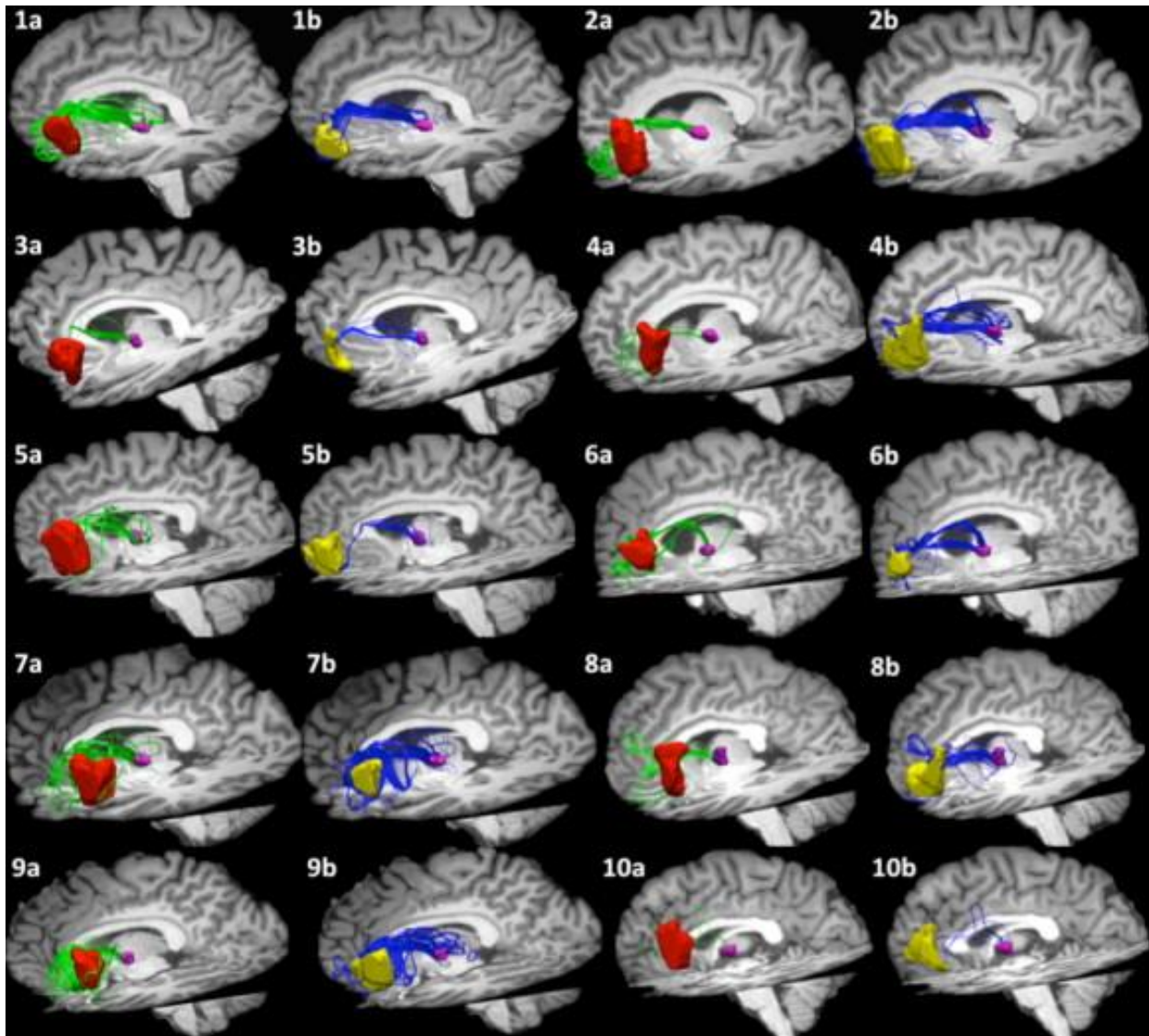
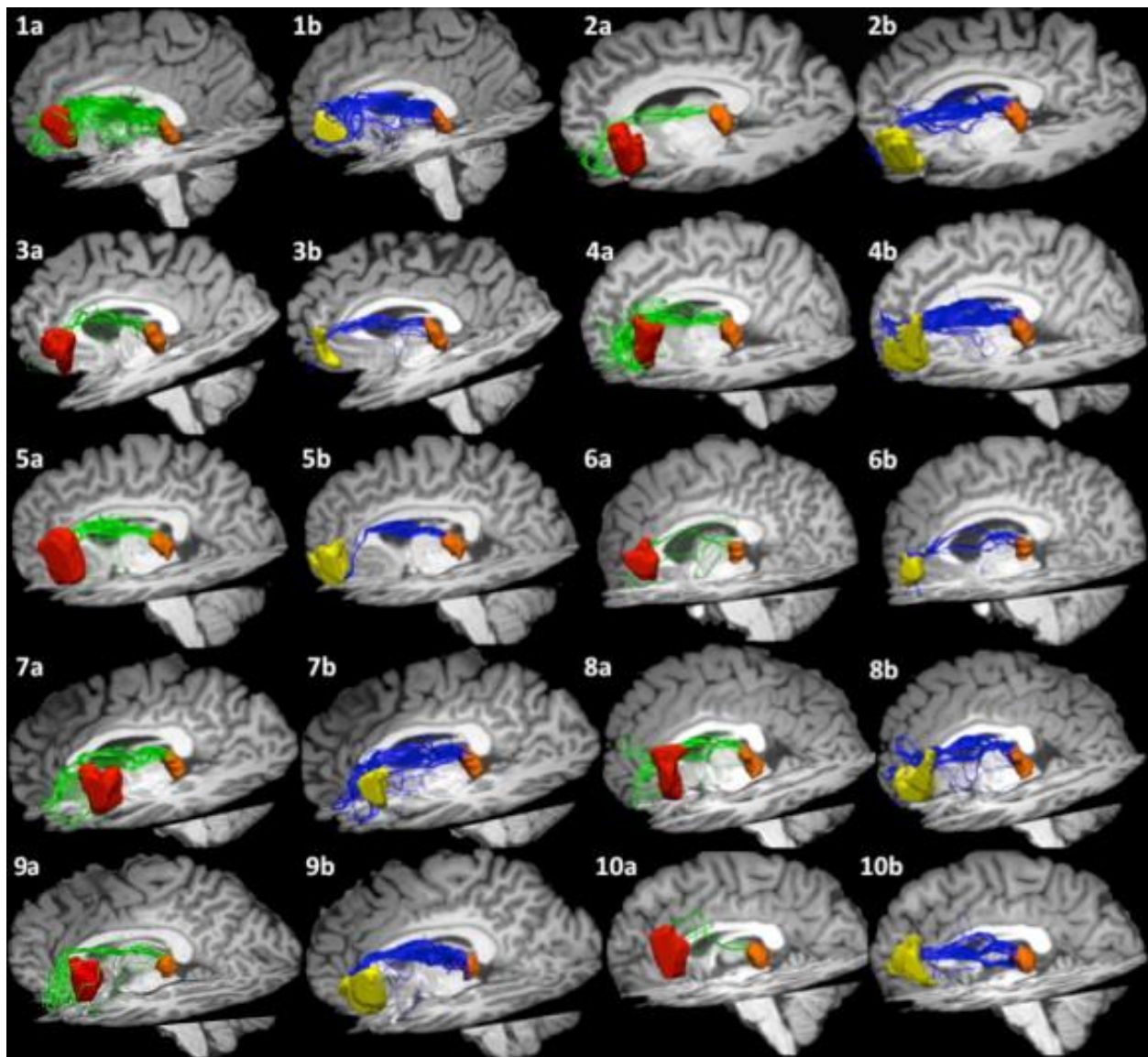


Appendix A. Supplementary material



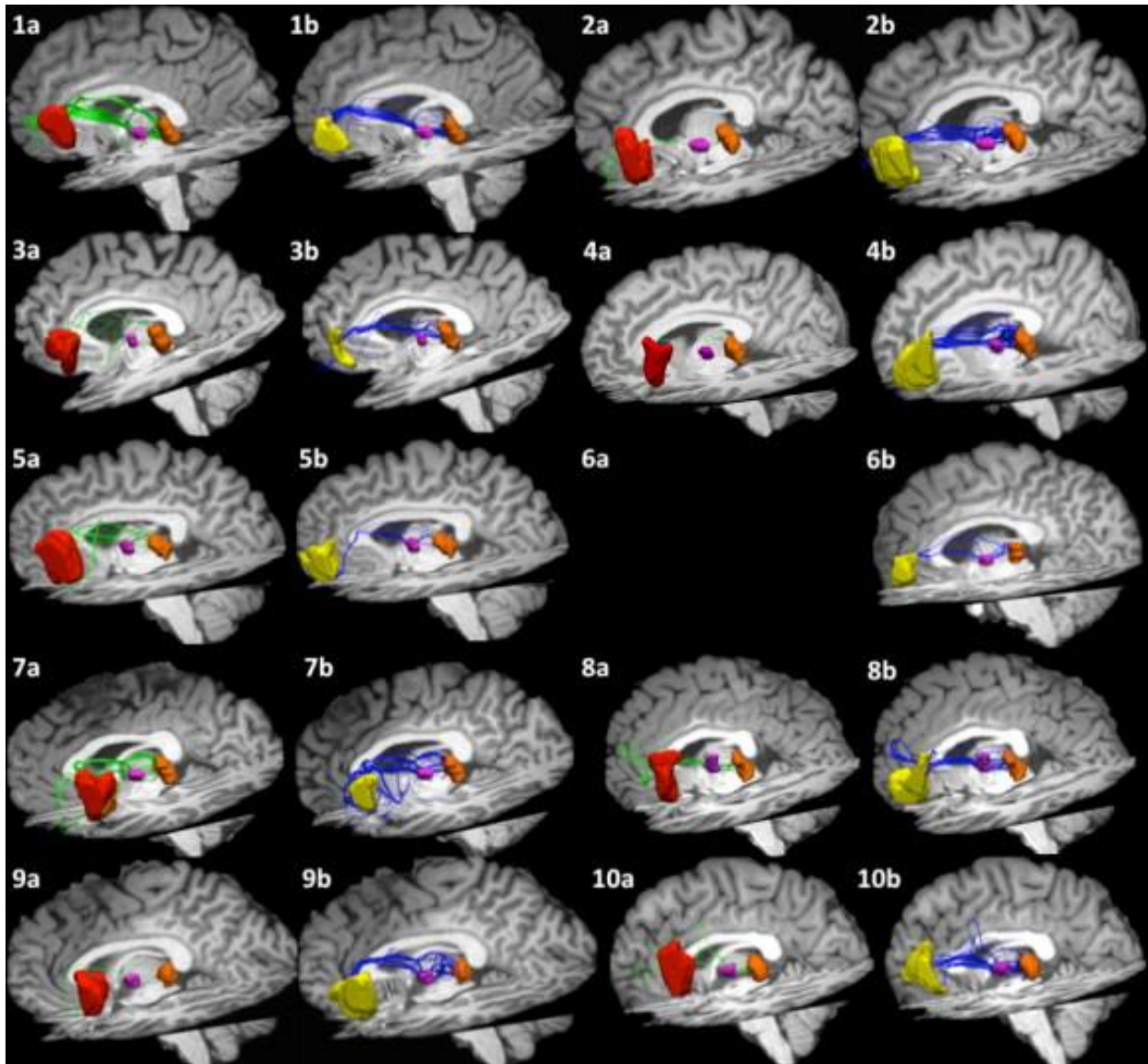
1. [Download : Download high-res image \(499KB\)](#)
2. [Download : Download full-size image](#)

Supplementary Figure 1. Projections connecting pars opercularis (a) and pars triangularis, (b) with ventral anterior nucleus in ten participants. Pars opercularis mask is depicted in red, pars triangularis in yellow, and ventral anterior nucleus is pink. Pars opercularis—ventral anterior nucleus pathways are depicted in green, while pars triangularis—ventral anterior nucleus pathways are rendered in blue.



1. [Download : Download high-res image \(475KB\)](#)
2. [Download : Download full-size image](#)

Supplementary Figure 2. Projections connecting pars opercularis (a) and pars triangularis, (b) with pulvina ten participants. Pars opercularis mask is depicted in red, pars triangularis in yellow, and pulvina is orange. Pars opercularis—pulvina pathways are depicted in green, while pars triangularis—pulvina pathways are rendered in blue



1. [Download](#) : [Download high-res image \(403KB\)](#)
2. [Download](#) : [Download full-size image](#)

Supplementary Figure 3. Projections among opercularis (a), pars triangularis (b), ventral anterior nucleus, and pulvinar in ten participants. Subfigure 6a is blank because participant #6 did not have any projections between pars opercularis, ventral anterior nucleus and pulvinar. Pars opercularis mask is depicted in red, pars triangularis in yellow, ventral anterior nucleus is pink, and pulvinar is orange. Pars opercularis—ventral anterior nucleus—pulvinar pathways are depicted in green, while pars triangularis—ventral anterior nucleus—pulvinar pathways are rendered in blue.