

Figure S1. Amplitude spectra of the behavioral time course at uncued, same object location and different object location. Horizontal bars above the curve indicate the significant frequencies ($p < 0.05$, corrected for multiple comparison) identified by autoregressive surrogate method. The dashed line represents significant threshold defined by the 95th percentile of the surrogate data.

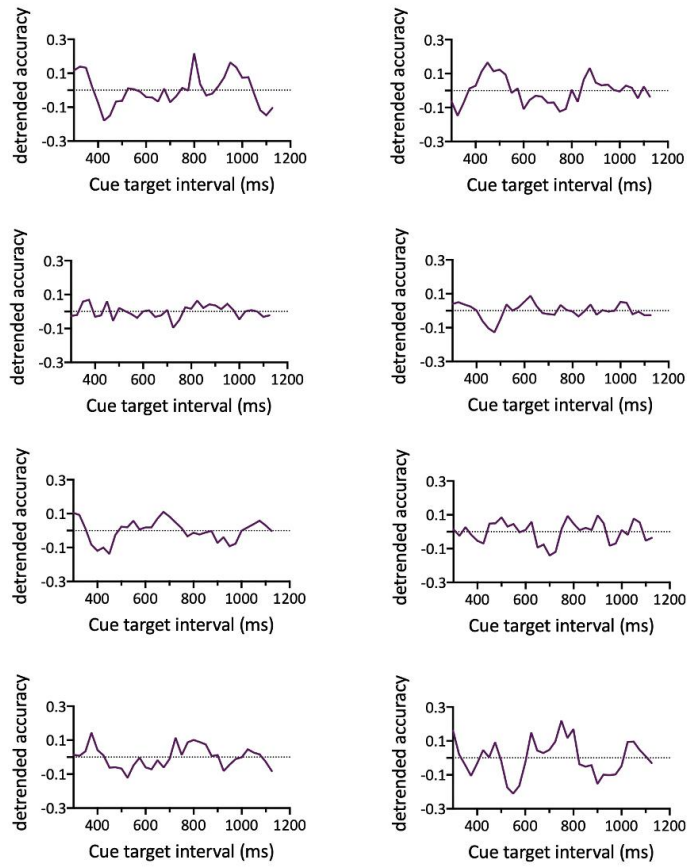


Figure S2. Behavioral time course from eight Autistic+ADHD subjects.

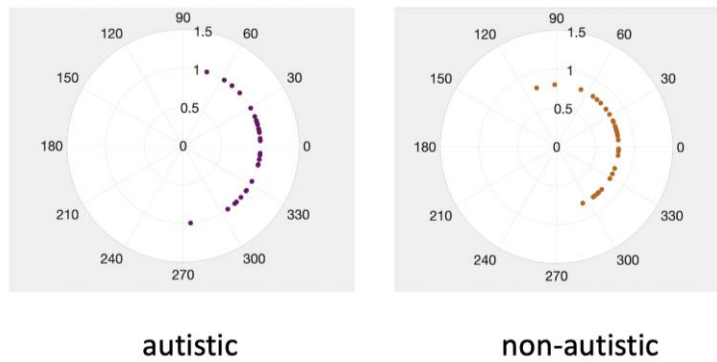


Figure S3. Polar plots show individual phases at 3Hz. (cued location condition)