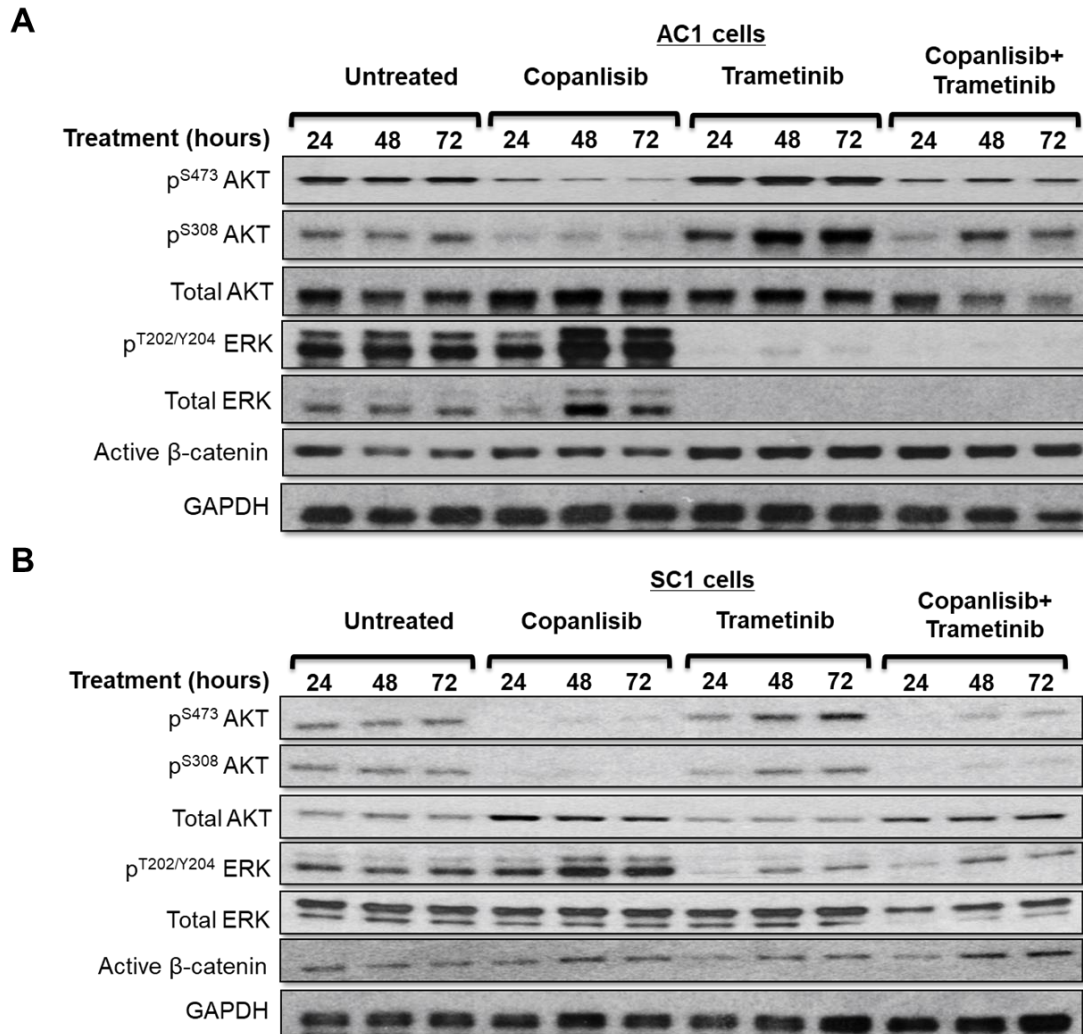


Supplementary Figure S7



Supplementary Figure S7. PI3Ki/MEKi combination therapy for 72 hours activates Wnt/ β -catenin pathway in PTEN/p53-deficient prostate GEMM tumor derived cell lines. (A-B) AC1/SC1 cells were treated with copanlisib (C, 100 nM), trametinib (T, 5 nM) or their combination for 24, 48 and 72 hours. Following treatment, western blot analyses with indicated protein markers were performed on AC1 (A) and SC1 (B) cell lysates. n=3 independent biological experiments.