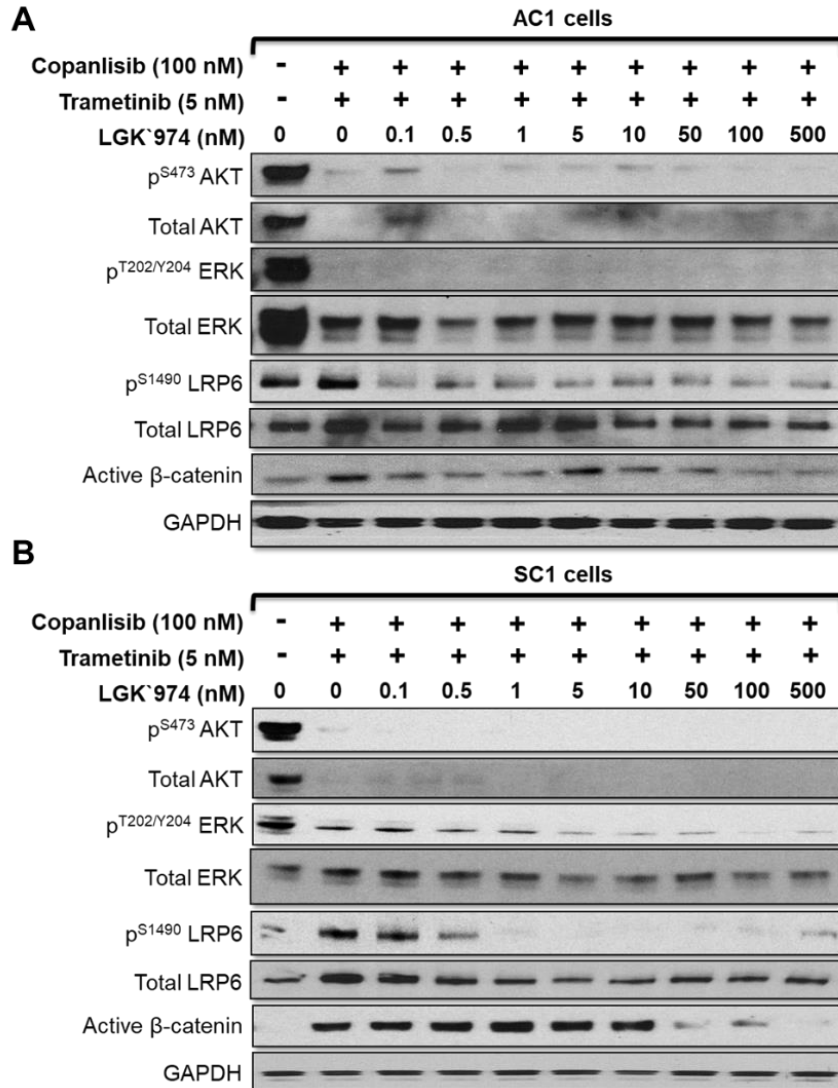


**Supplementary Figure S9**



**Supplementary Figure S9. Addition of PORCNI inhibits PI3Ki + MEKi mediated Wnt/ $\beta$ -catenin pathway activation in PTEN/p53-deficient GEMM tumor-derived PC cells. (A-B) AC1 (A) and SC1 (B) cells were treated with copanlisib ( $IC_{90}$  = 100 nM, 72 hours) and trametinib ( $IC_{90}$  = 5 nM, 72 hours) combination to activate Wnt/ $\beta$ -catenin pathway. LGK`974 (0.1-500 nM, 72 hours) was concurrently added in a dose-dependent manner and western blot analyses were performed for indicated proteins to determine  $IC_{90}$  for Wnt/ $\beta$ -catenin pathway inhibition. n=2 independent biological experiments.**