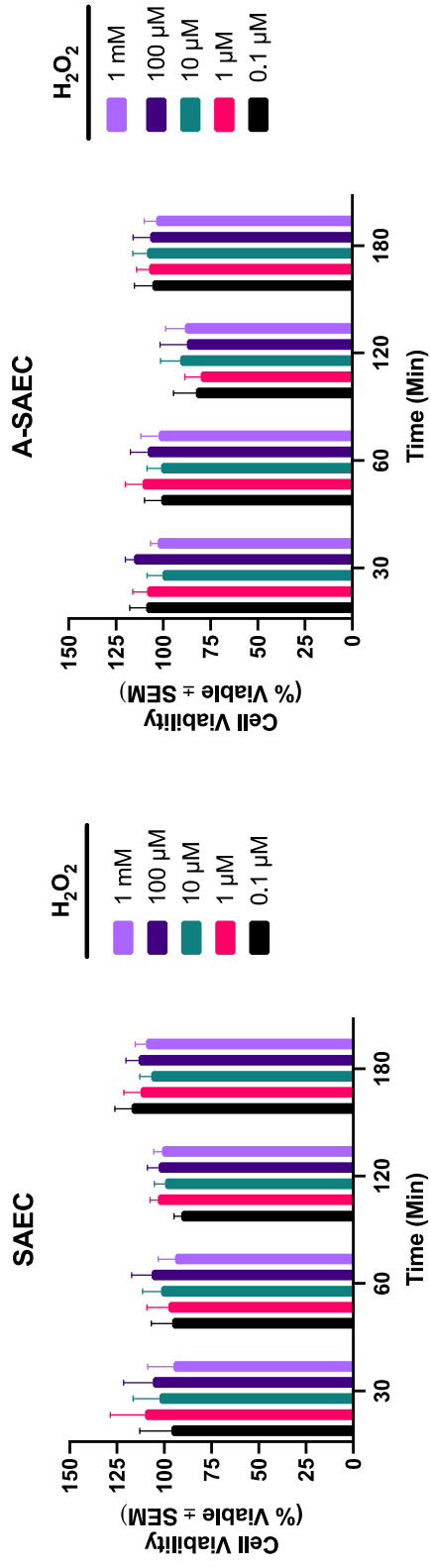


## Supplementary Figures

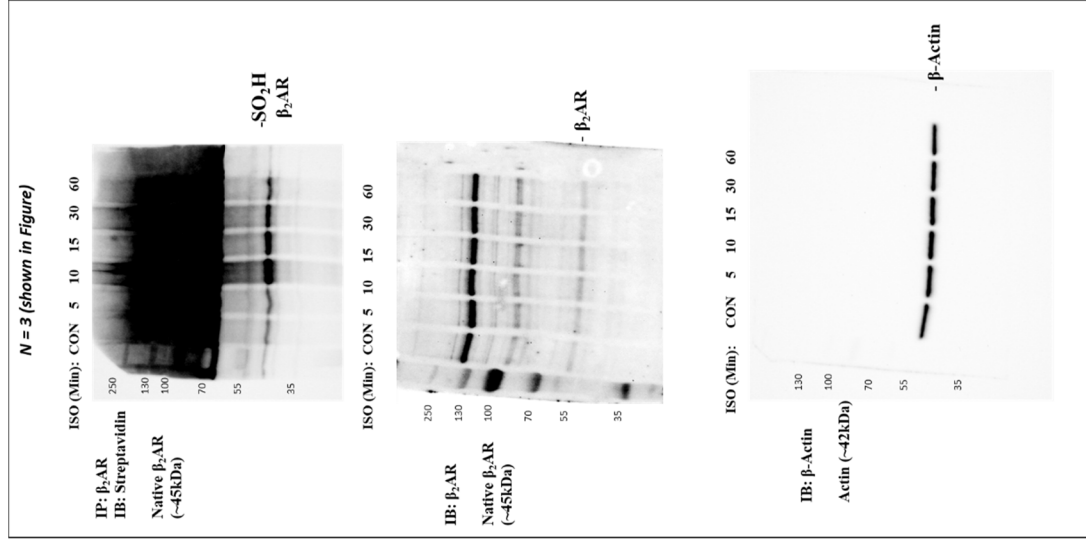
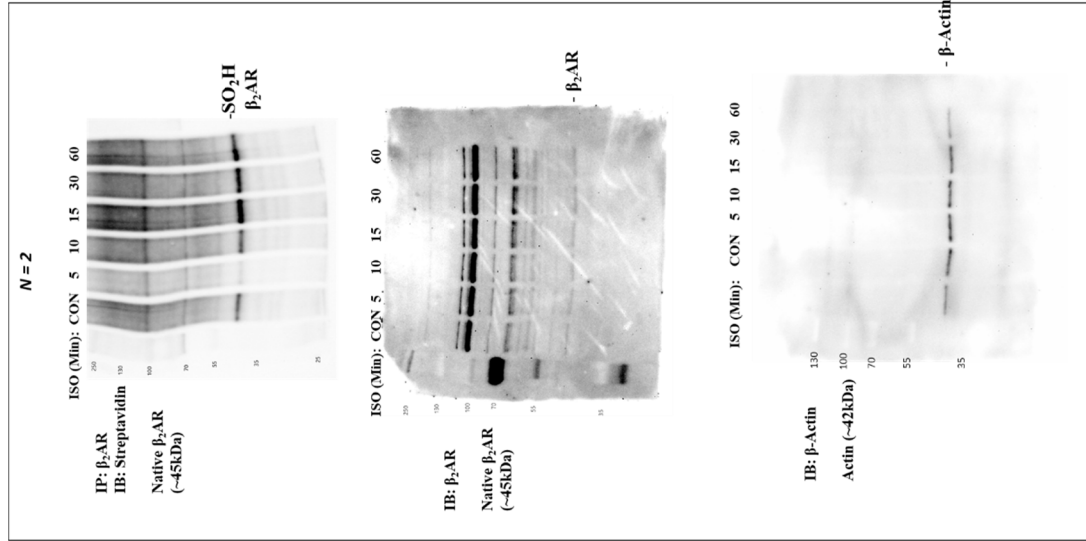
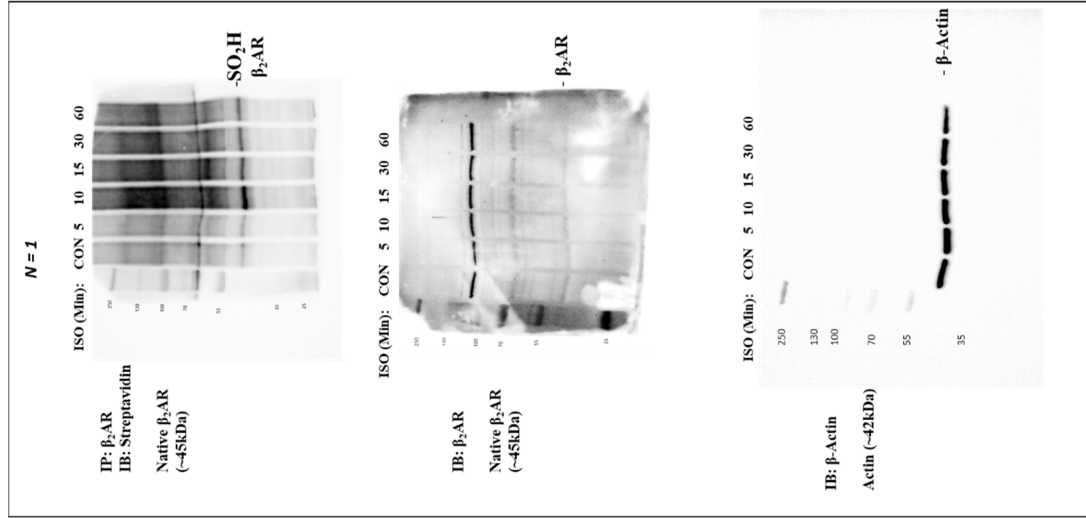
Singh K and Moniri NH.  $\beta$ 2-adrenergic receptor-reactive oxygen species signaling axis in small airway epithelial cells: agonist and H<sub>2</sub>O<sub>2</sub>-mediated hyperoxidation of  $\beta$ 2AR and implications for tachyphylaxis to  $\beta$ 2-agonists.



**Supplementary Figure 1:** Cell viability assays of SAEC and A-SAEC in the presence of increasing concentrations of H<sub>2</sub>O<sub>2</sub> for 30-180 min yields no significant differences in cell viability.

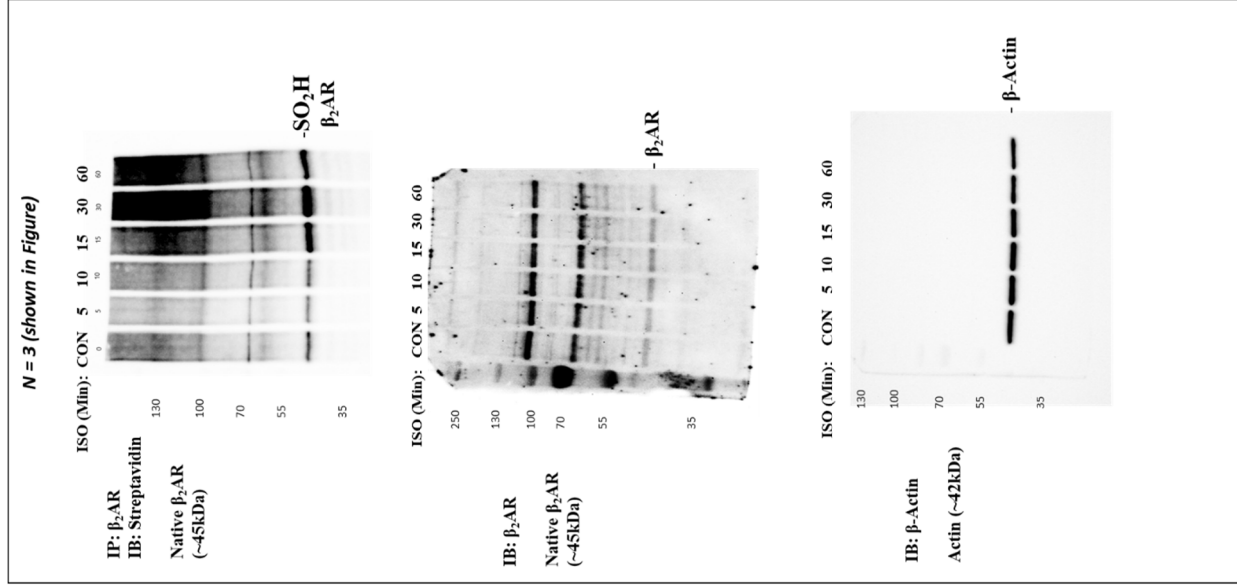
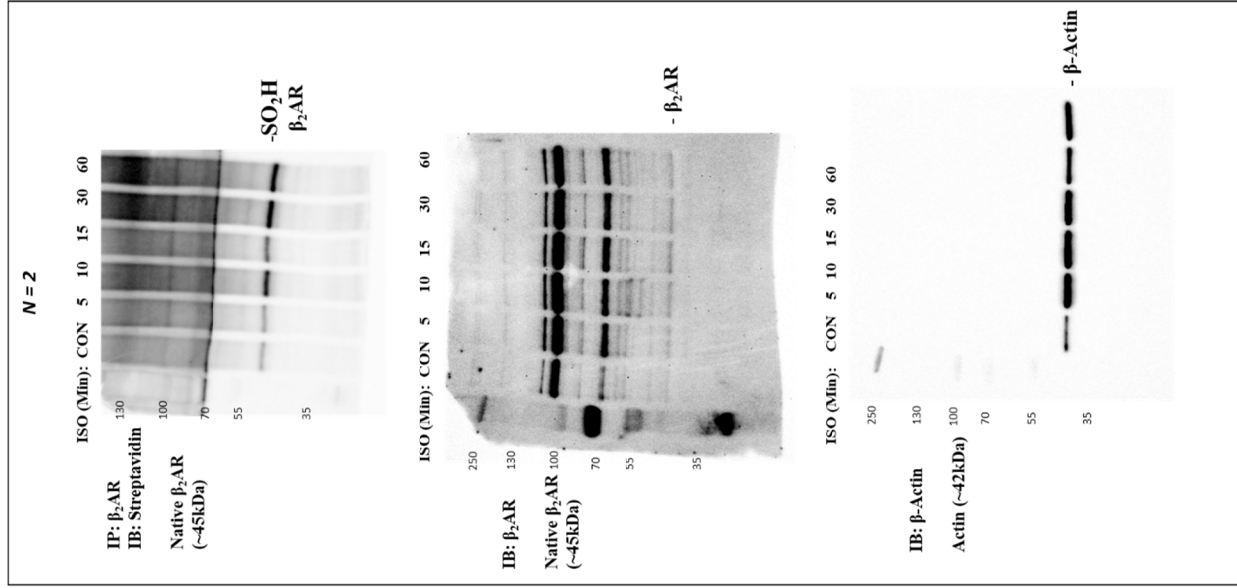
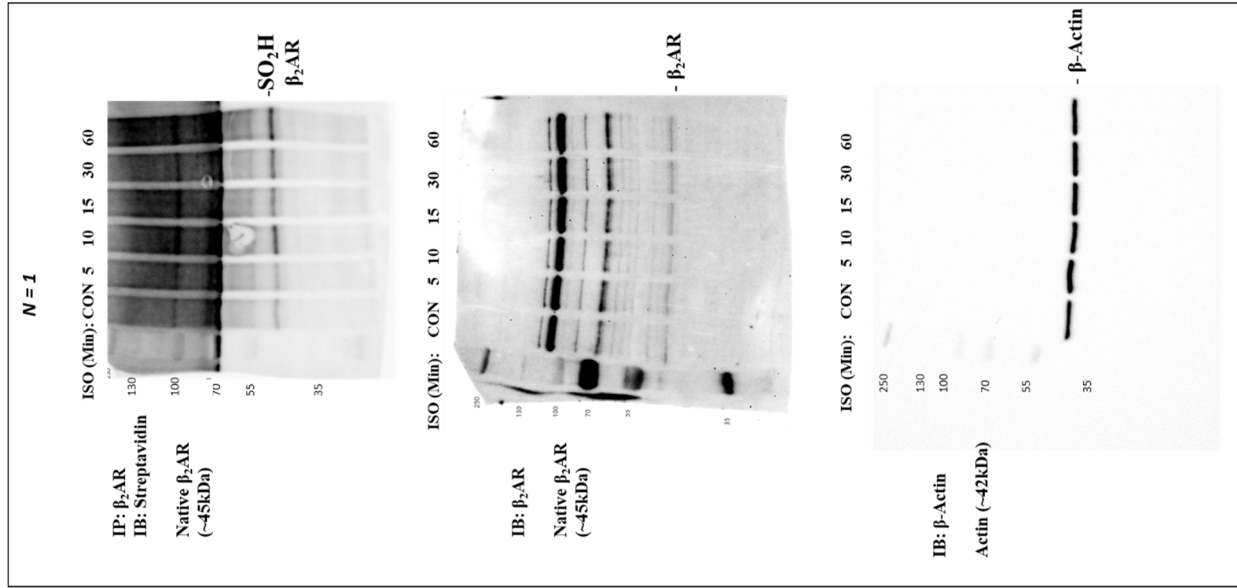
# Full length immunoblot replicates from figure 2A:

## SAEC blots:



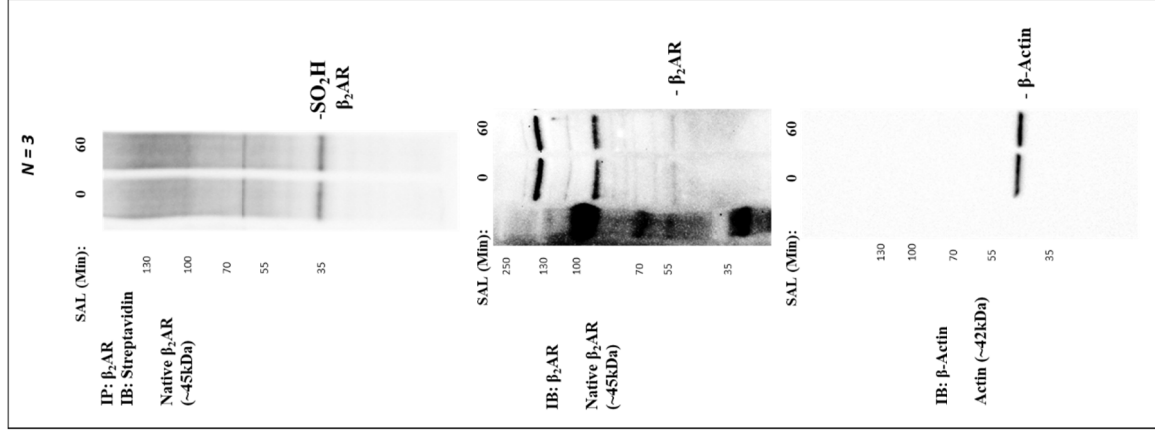
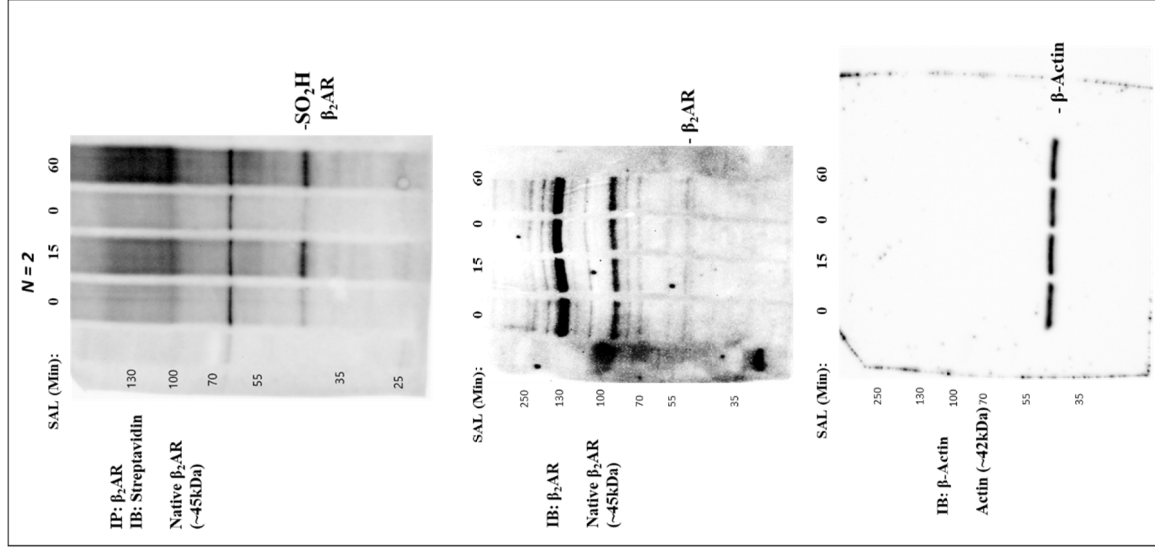
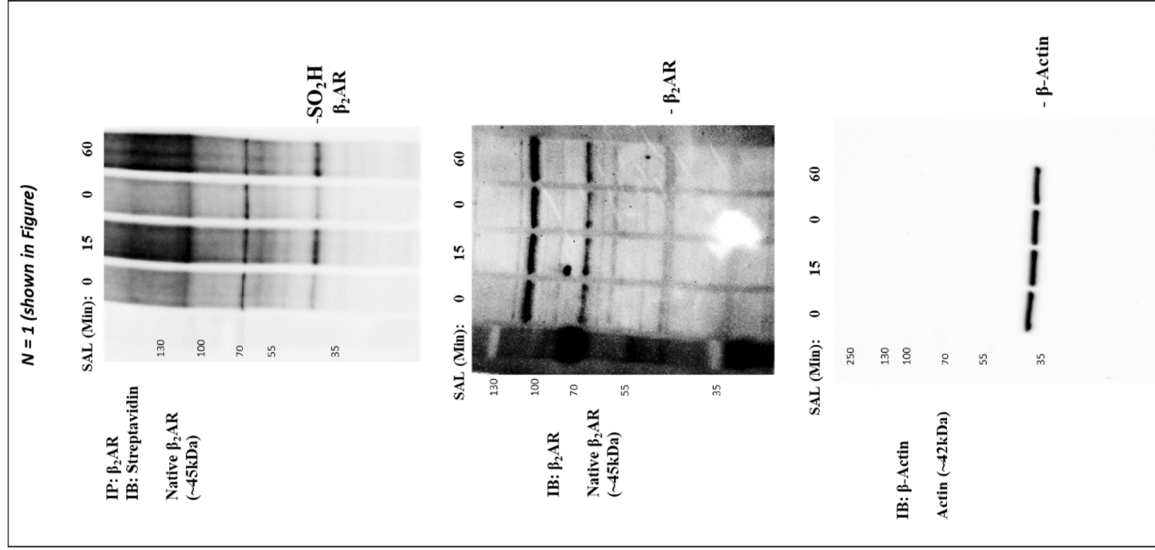
# Full length immunoblot replicates from figure 2A:

## A-SAEC blots:



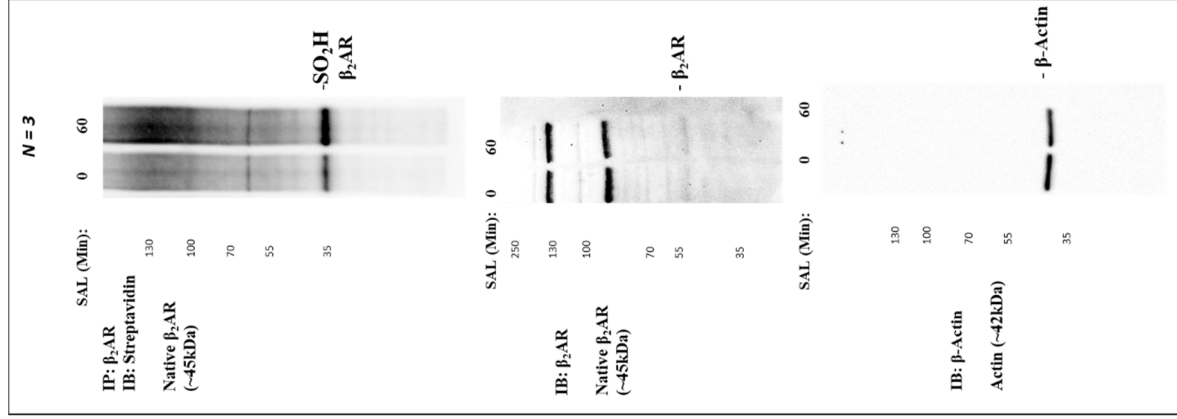
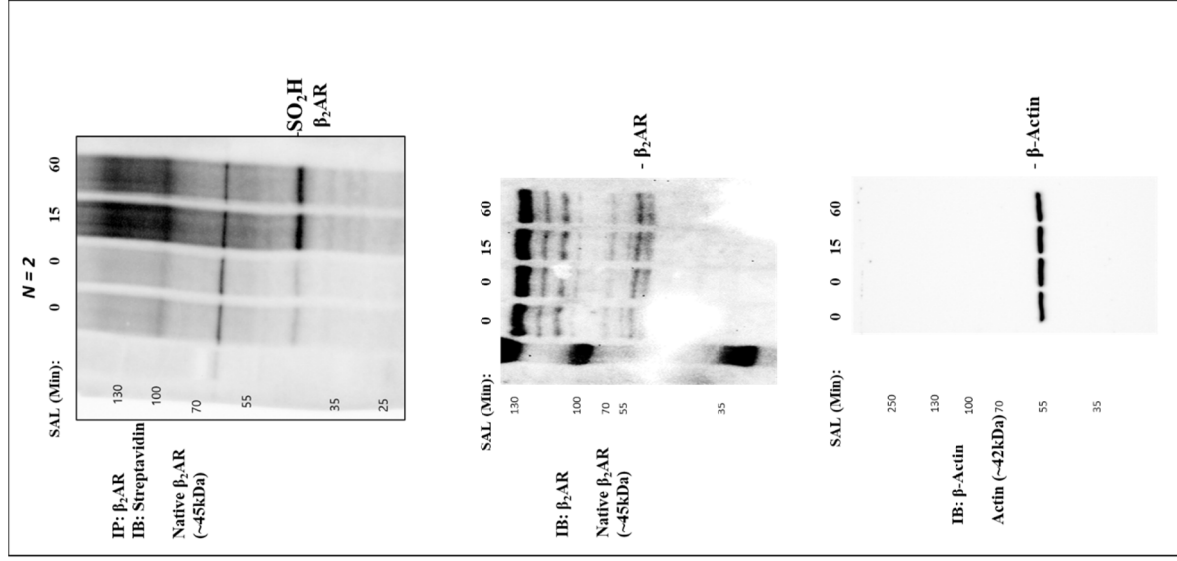
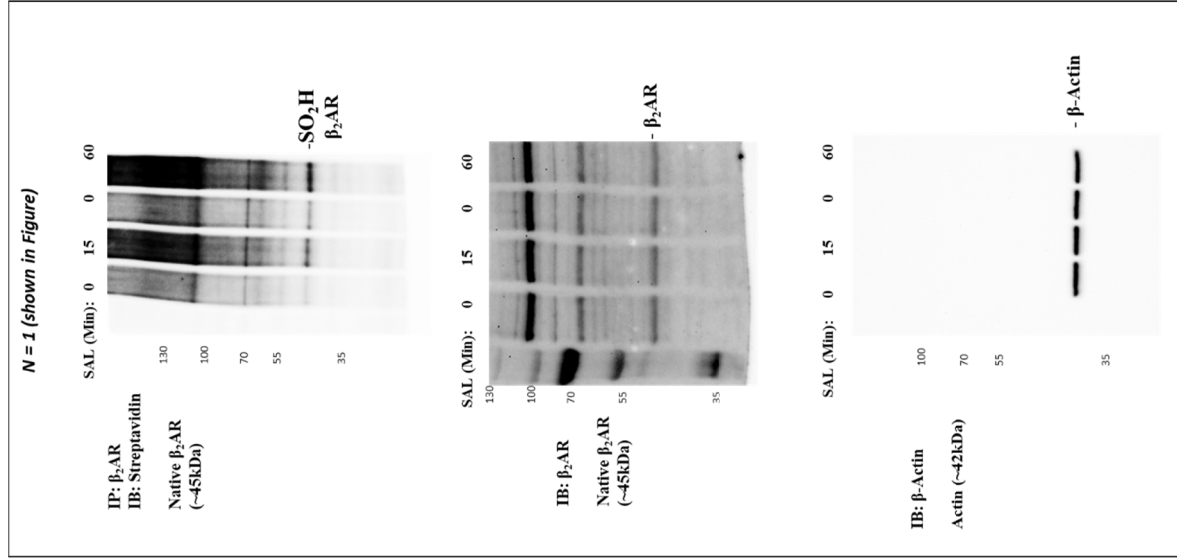
# Full length immunoblot replicates from figure 2B:

## SAEC blots:



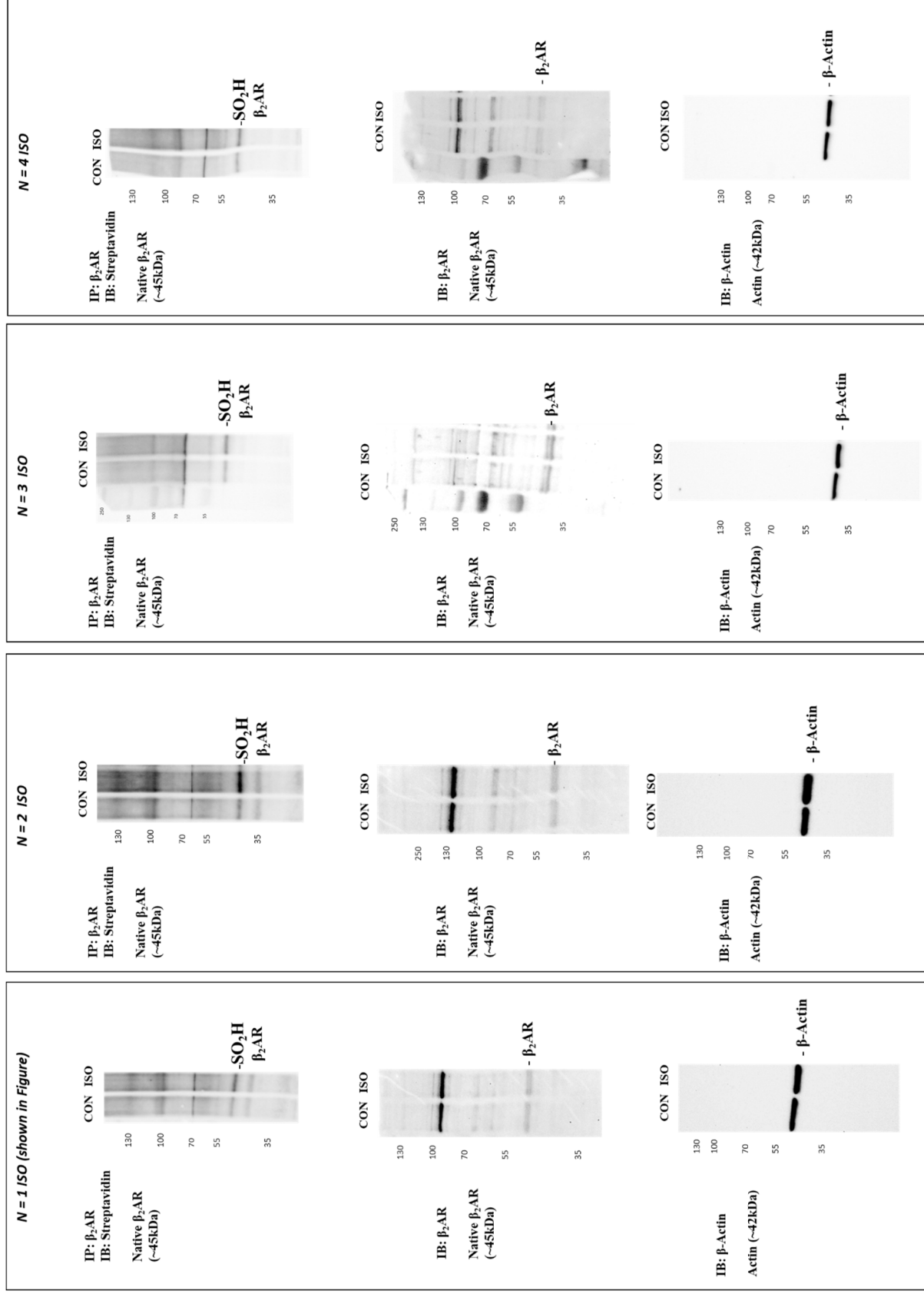
# Full length immunoblot replicates from figure 2B:

## A-SAEC blots:



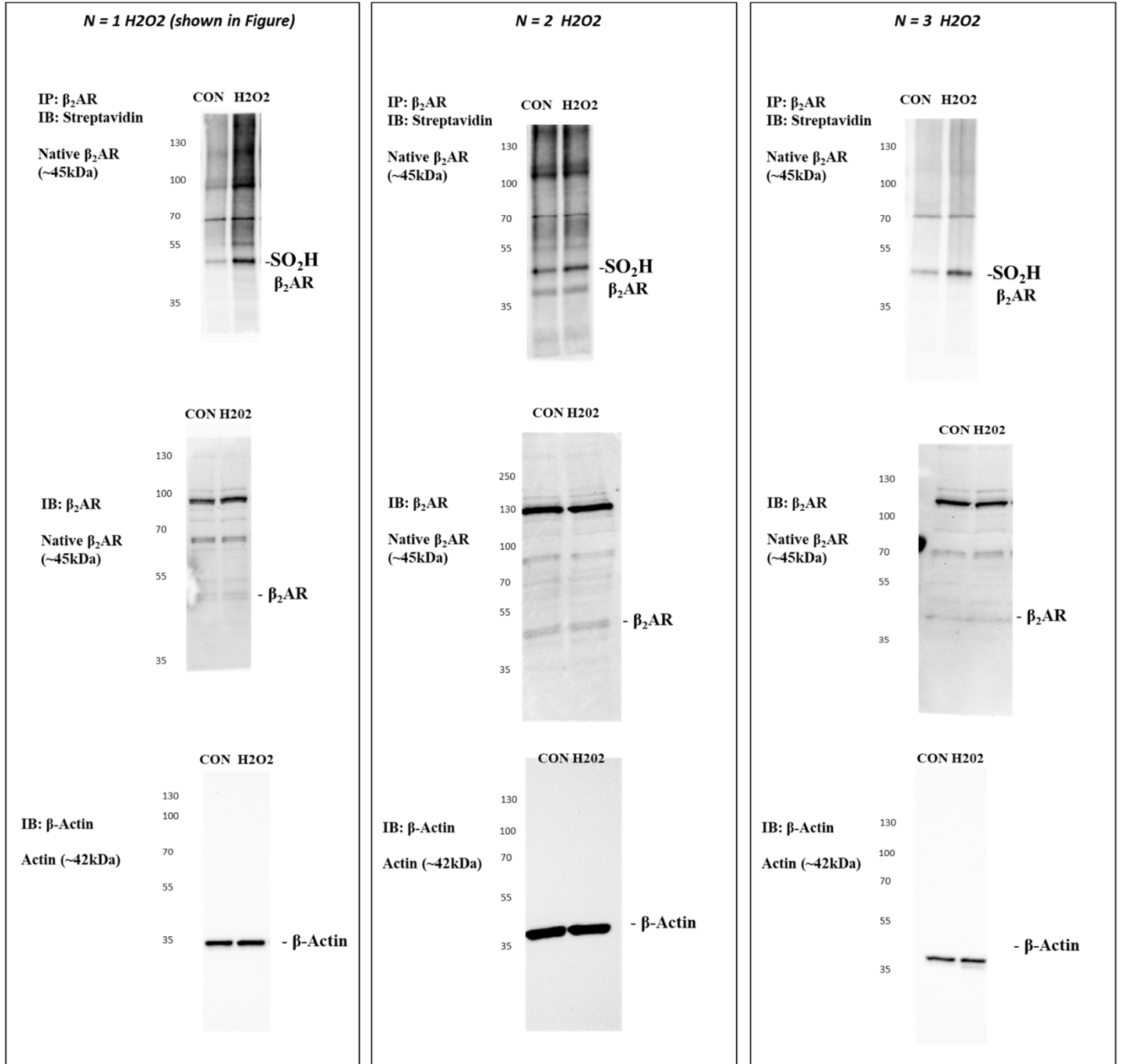
# Full length immunoblot replicates from figure 2C:

## SAEC – ISO blots



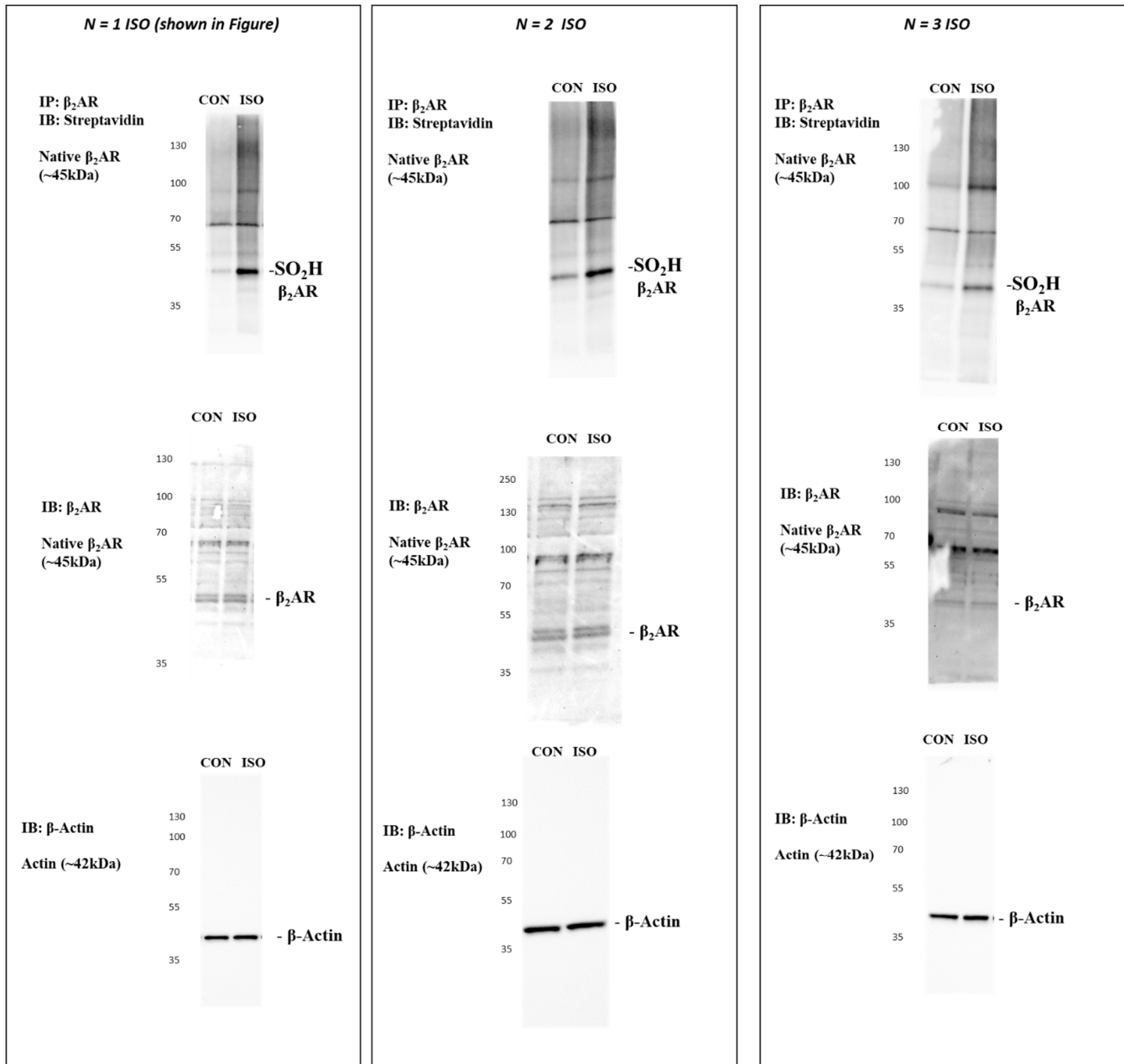
Full length immunoblot replicates from figure 2C:

SAEC – H<sub>2</sub>O<sub>2</sub> blots



Full length immunoblot replicates from figure 2C:

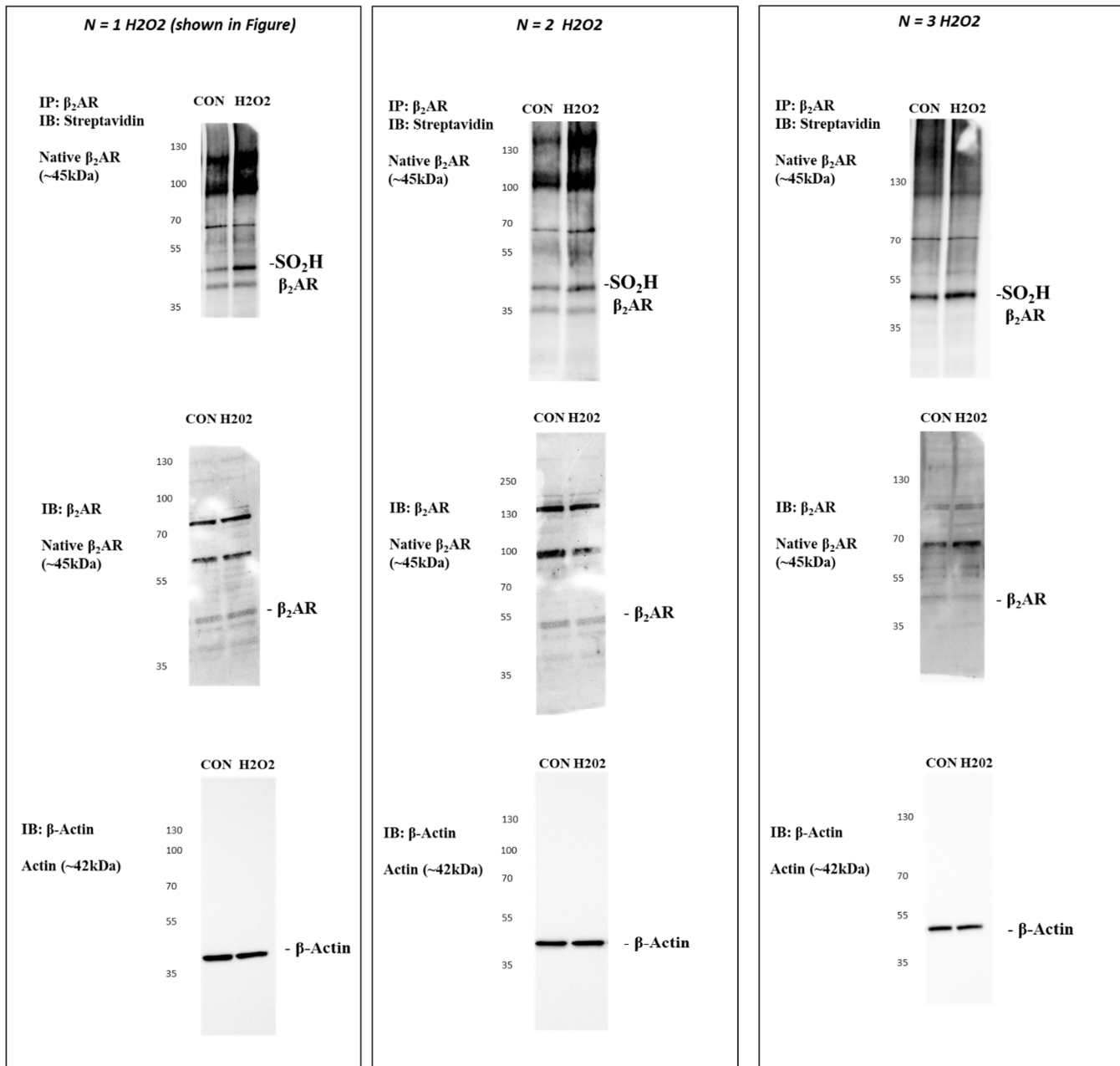
A-SAEC – ISO blots



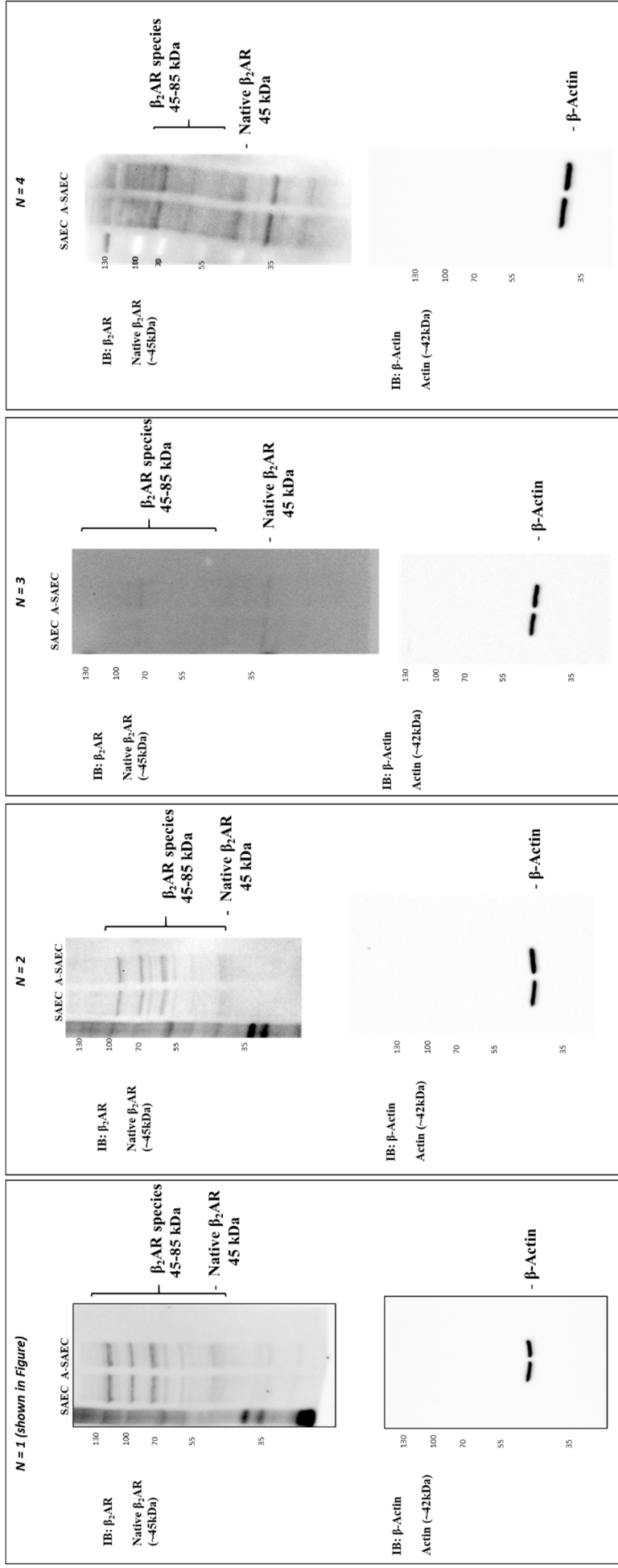


Full length immunoblot replicates from figure 2C:

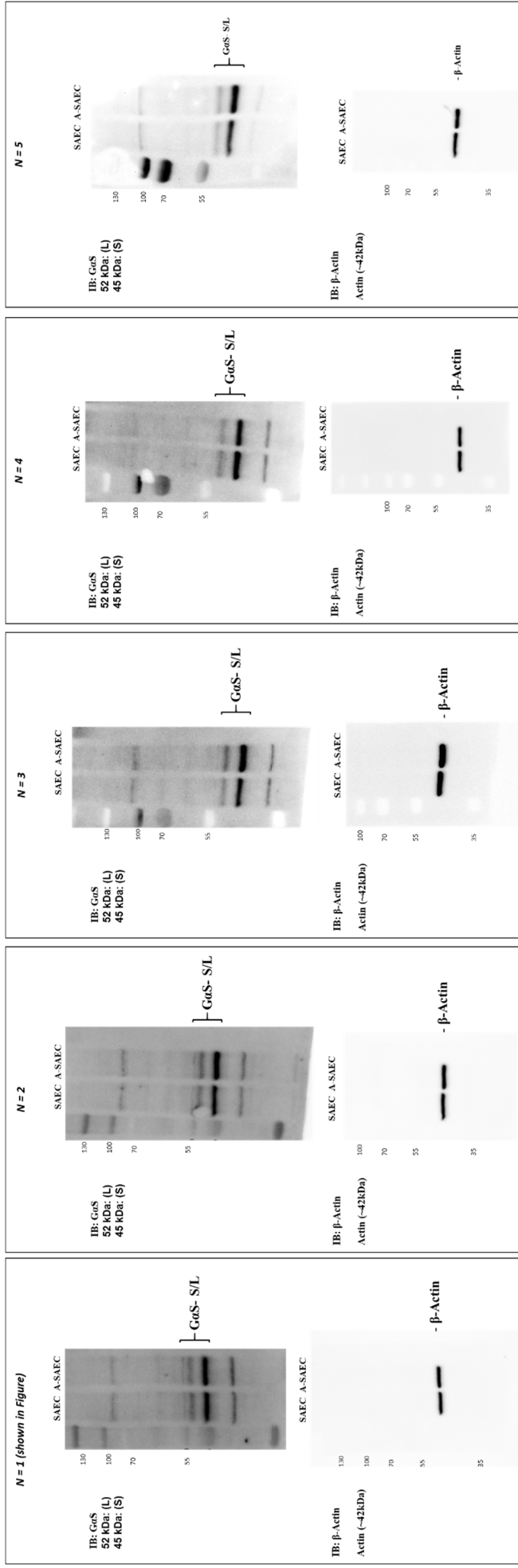
A-SAEC – H<sub>2</sub>O<sub>2</sub> blots



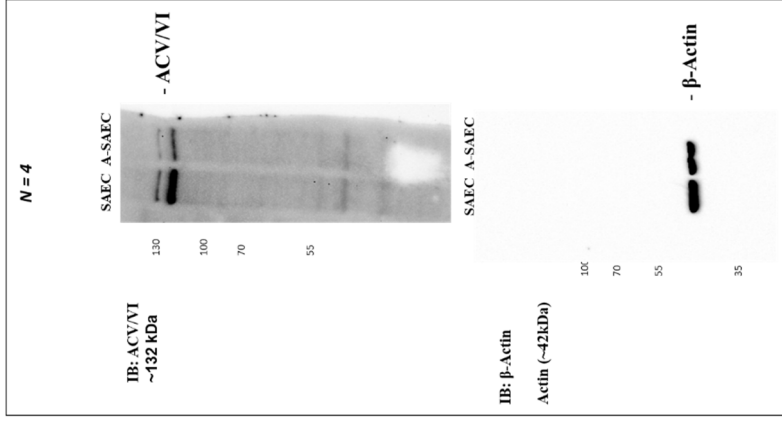
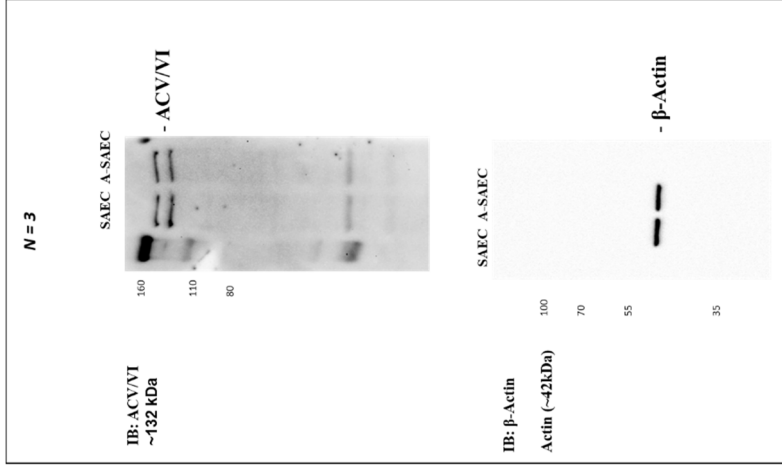
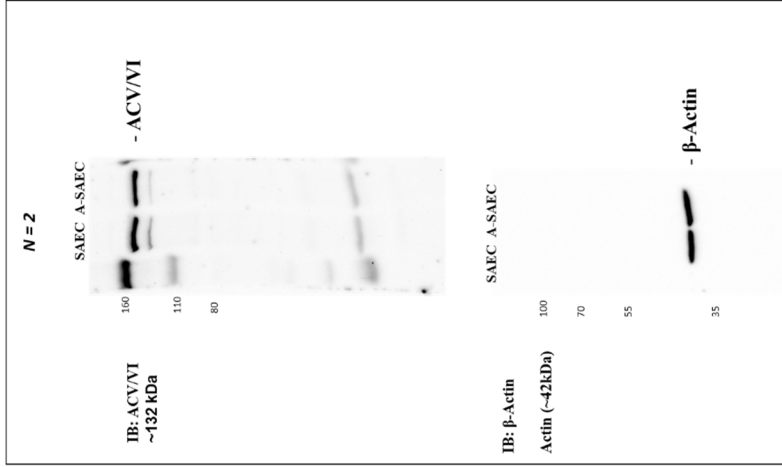
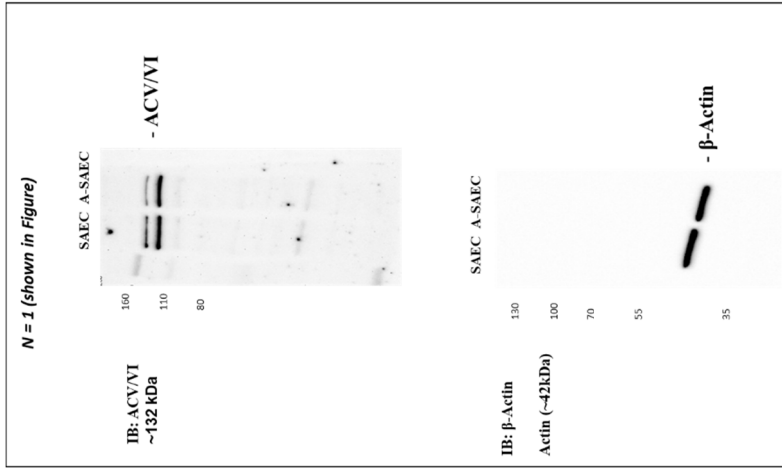
Full length immunoblot replicates from figure 6A:



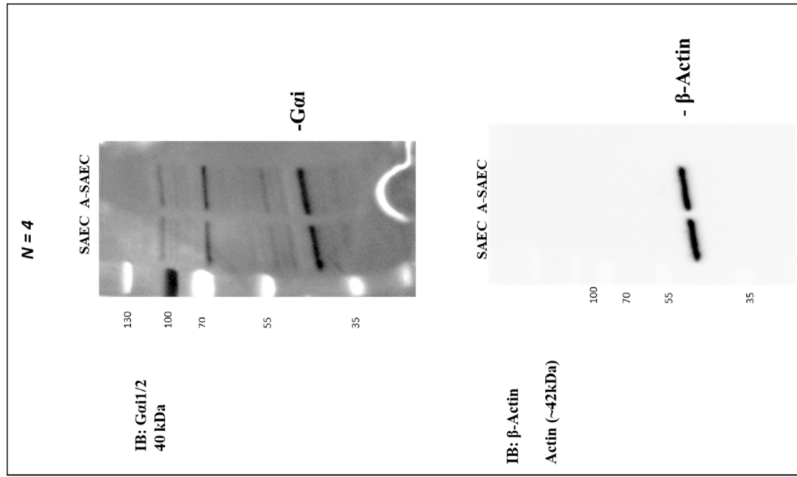
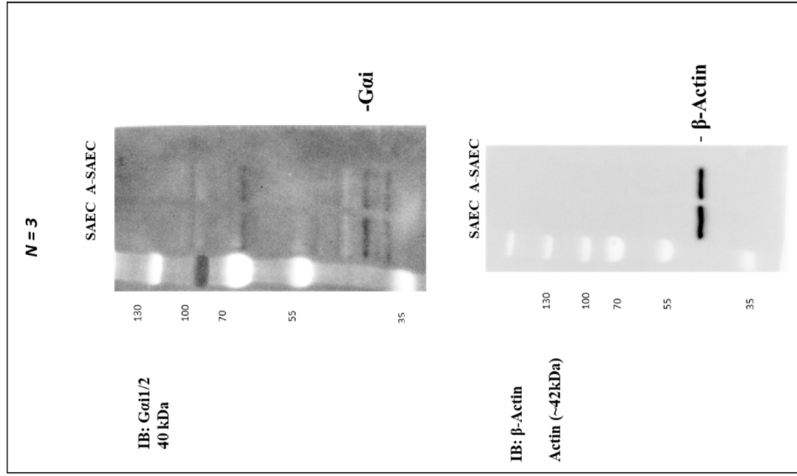
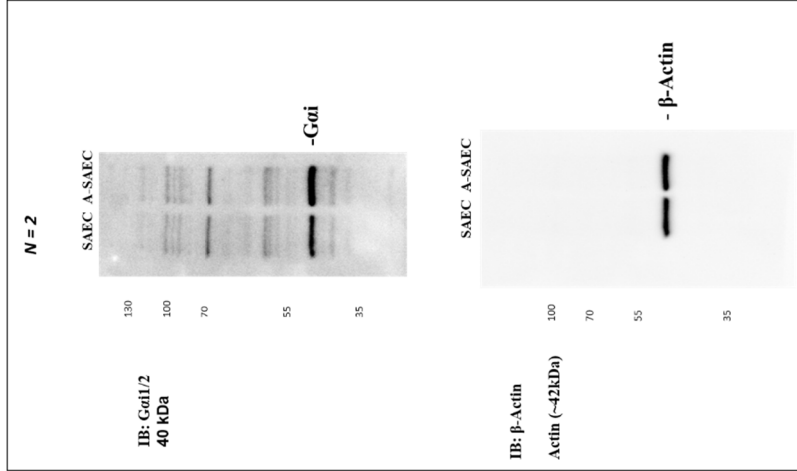
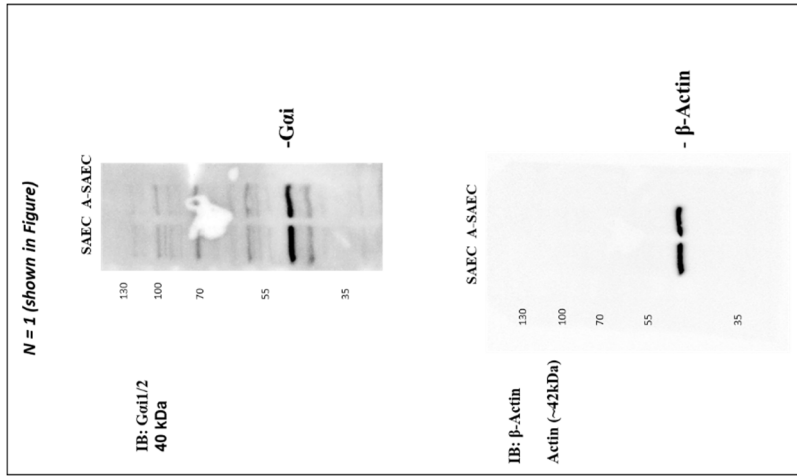
Full length immunoblot replicates from figure 6B:



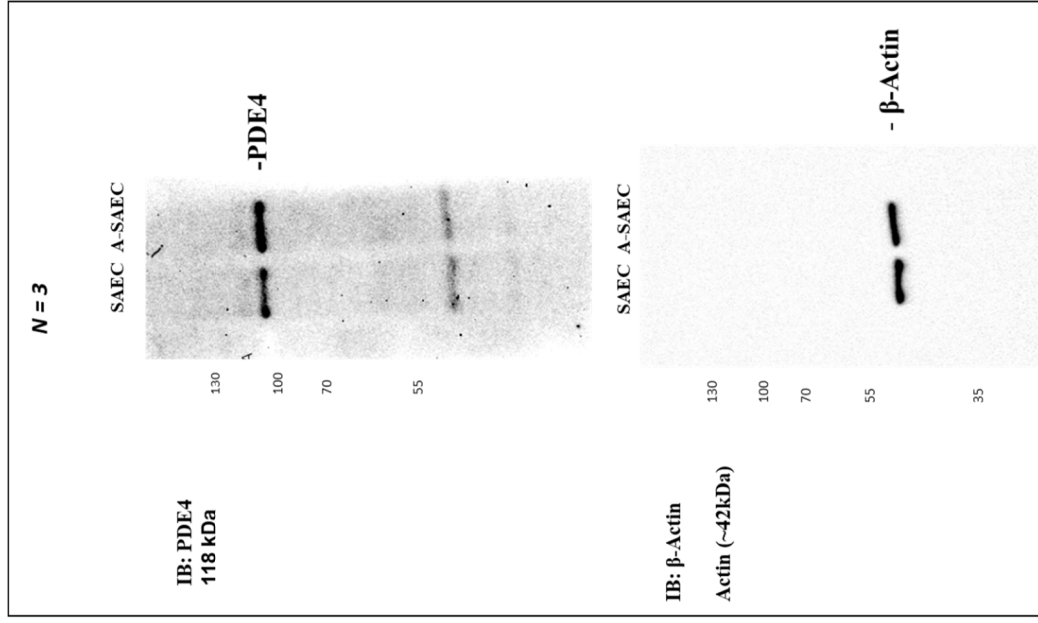
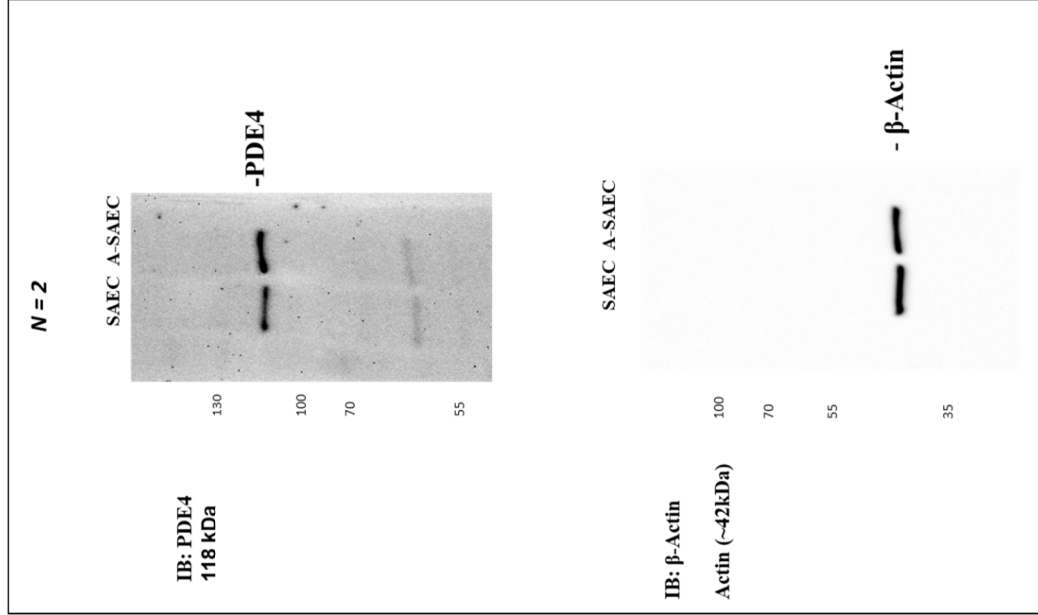
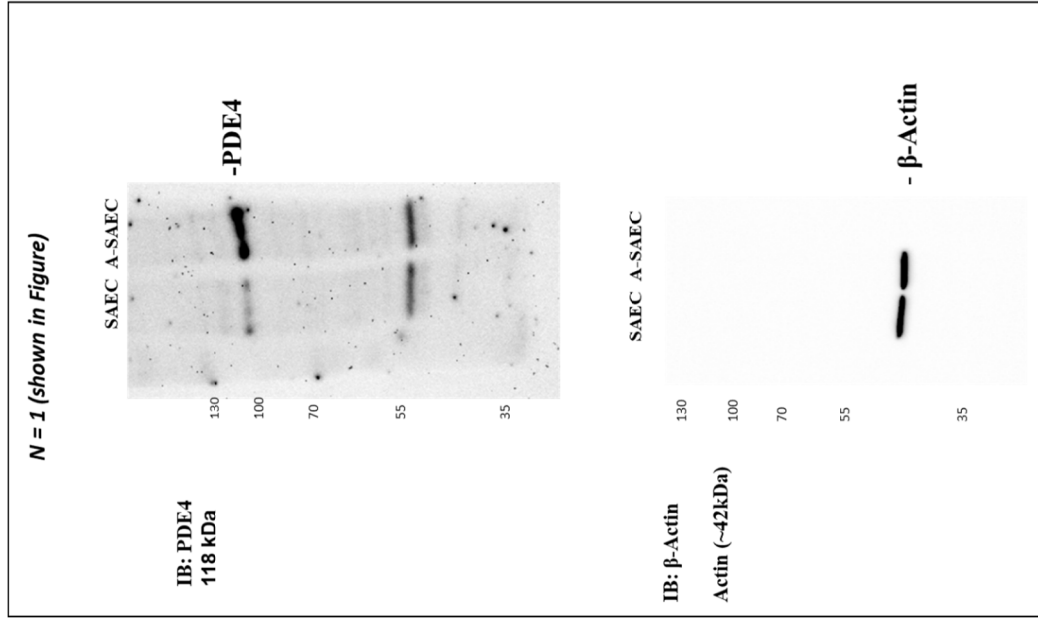
Full length immunoblot replicates from figure 6C:



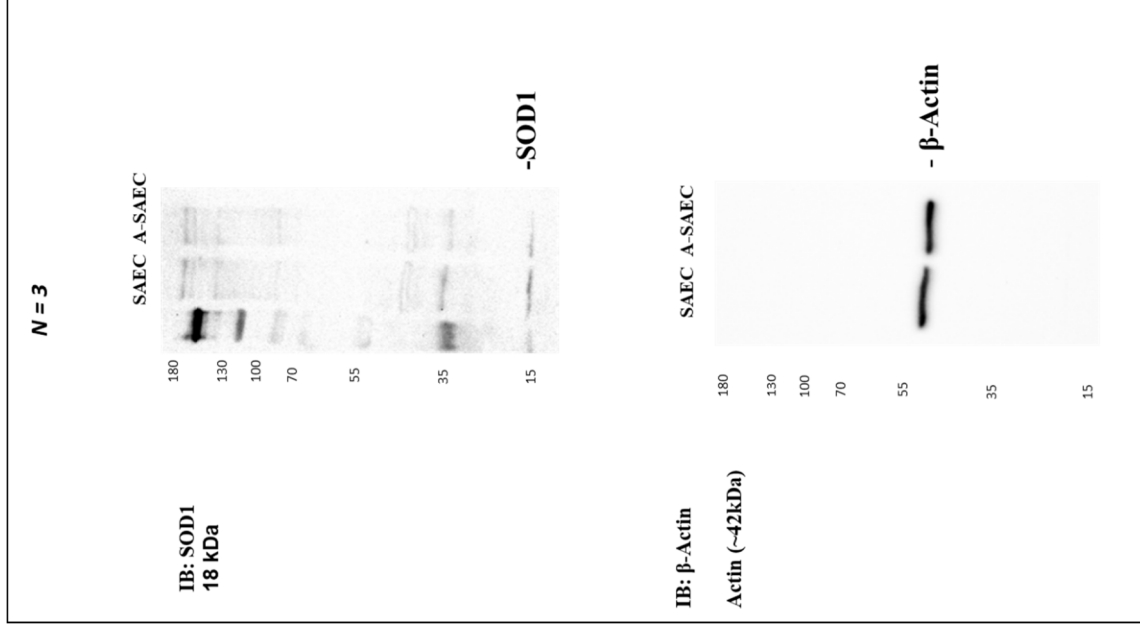
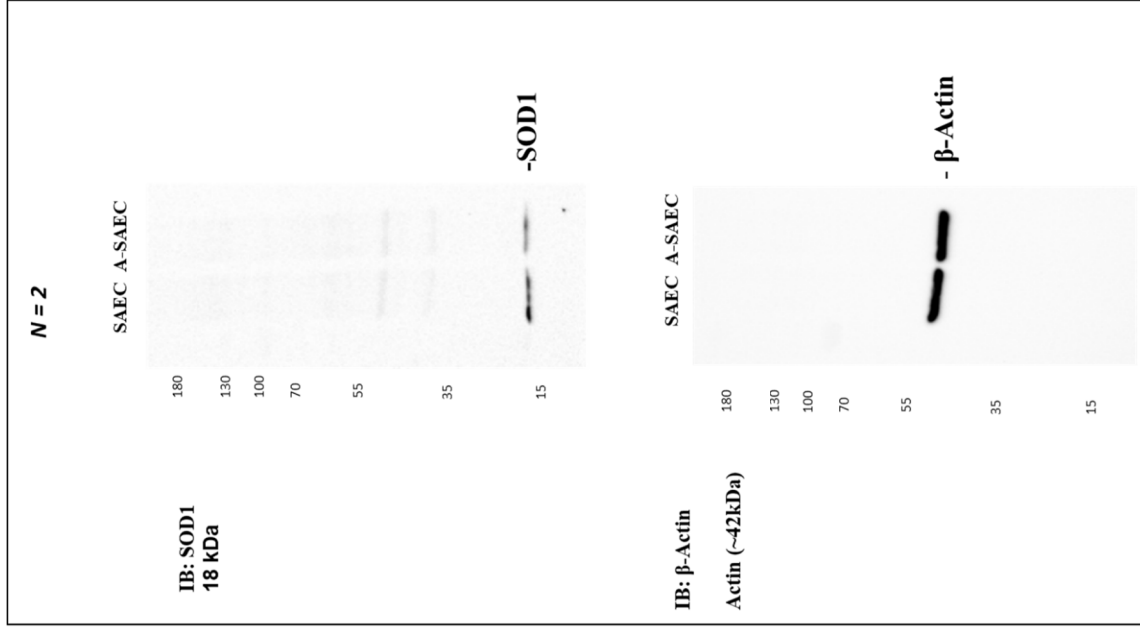
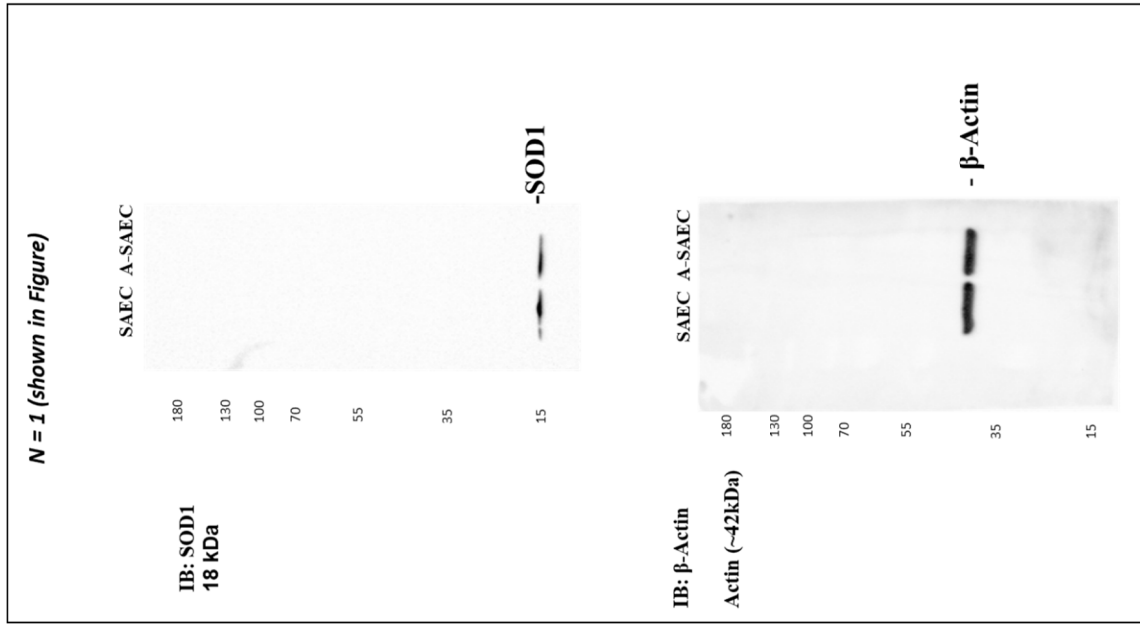
Full length immunoblot replicates from figure 6D:



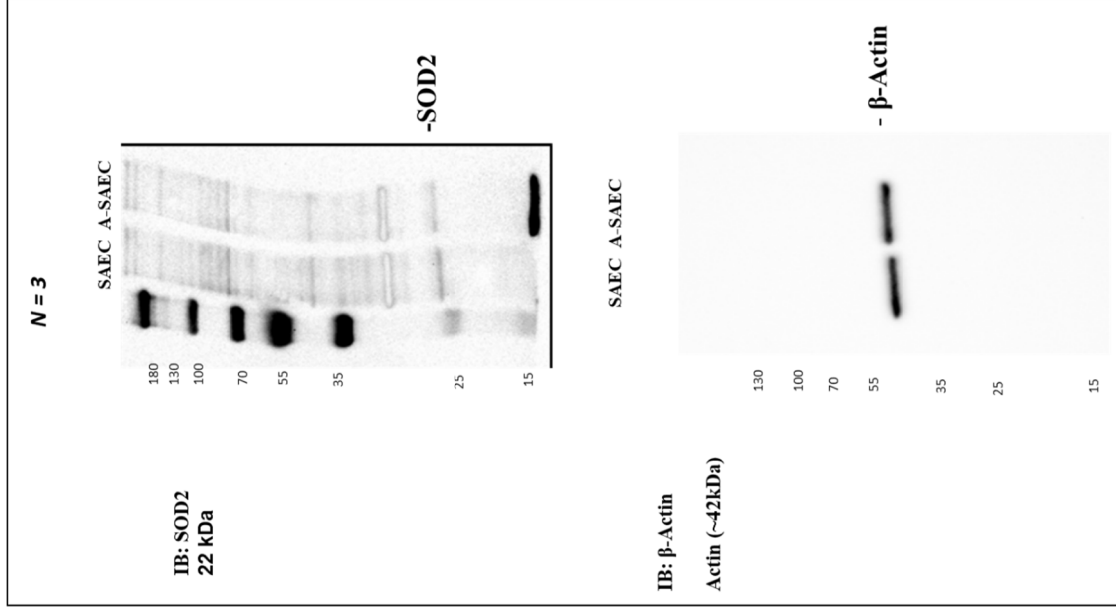
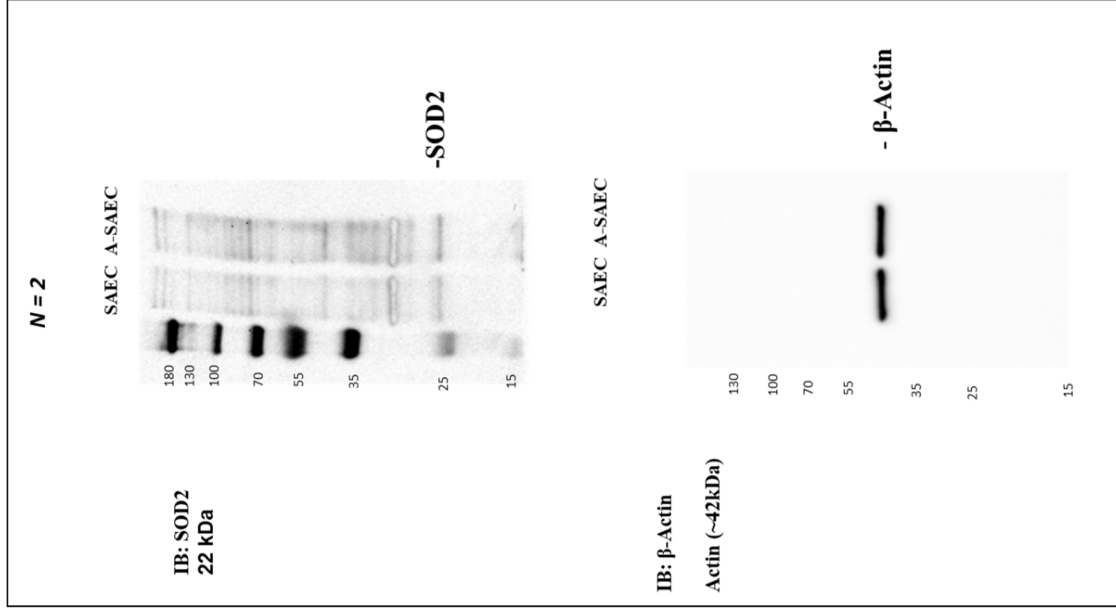
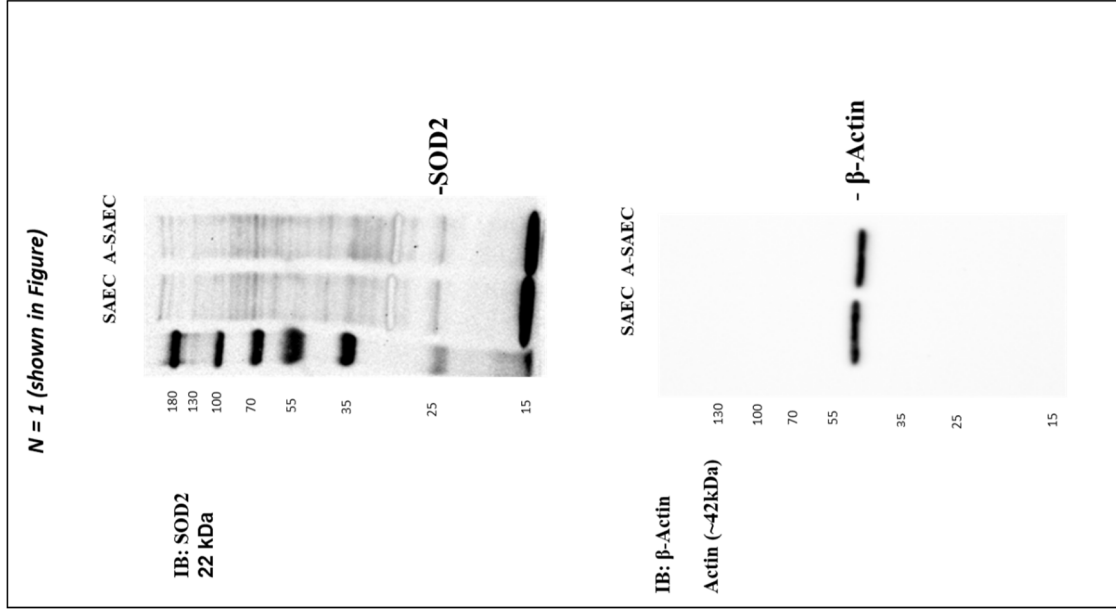
Full length immunoblot replicates from figure 6E:



Full length immunoblot replicates from figure 6F (SOD1):

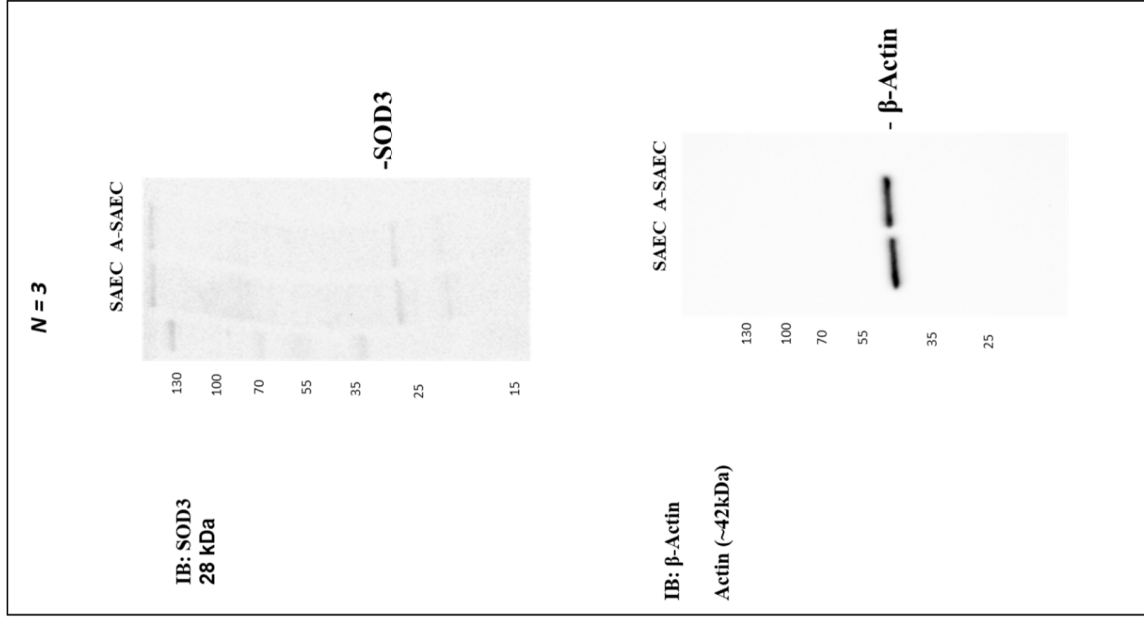
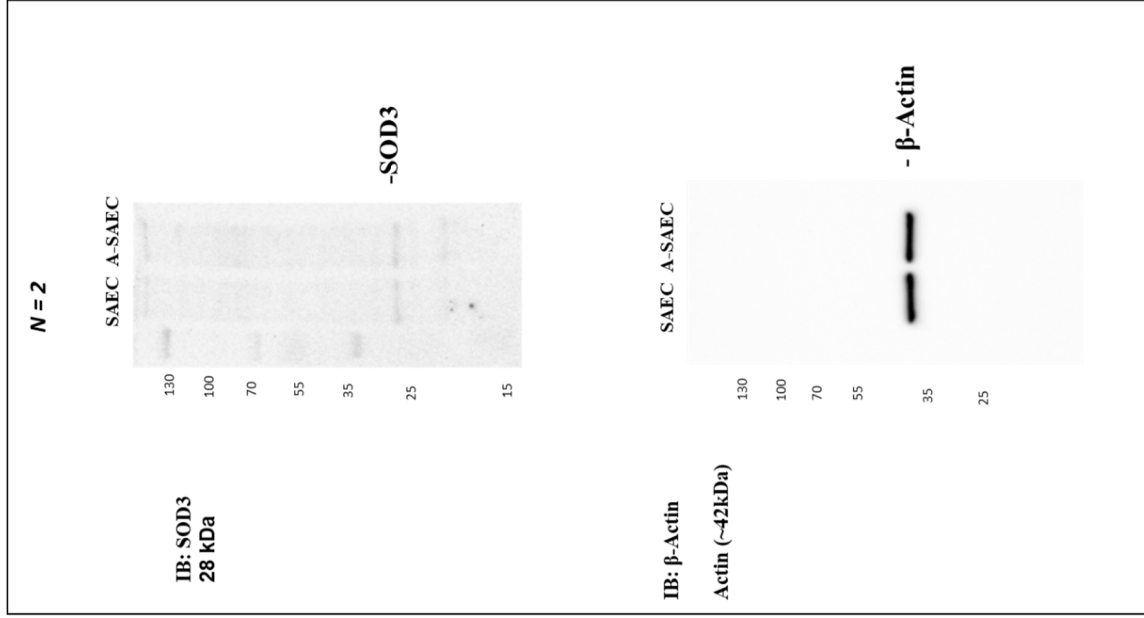
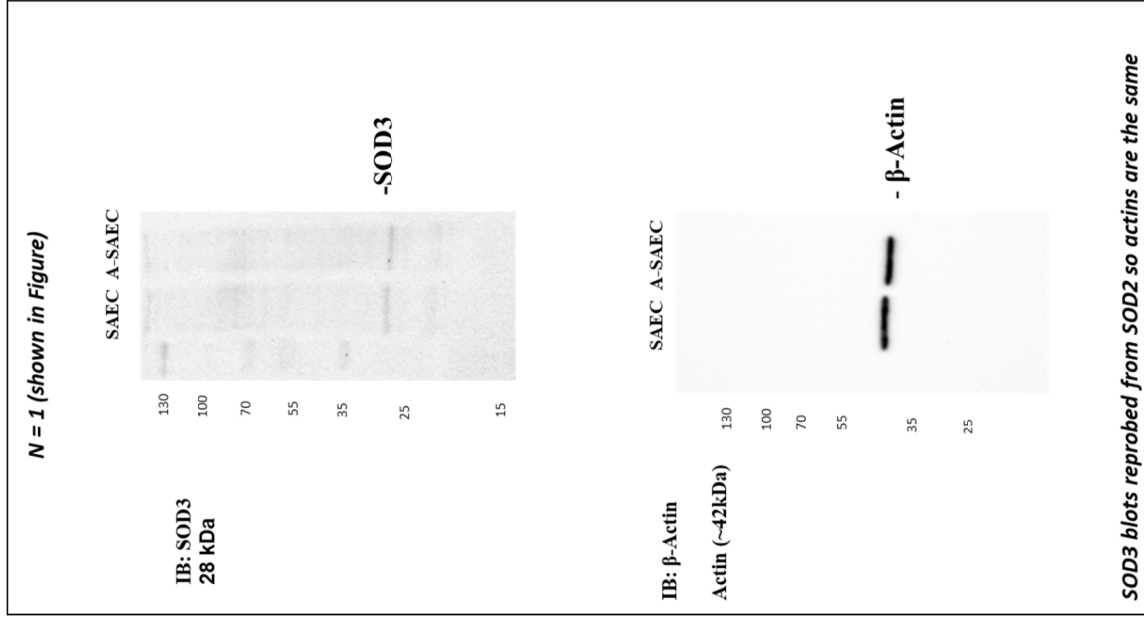


Full length immunoblot replicates from figure 6F (SOD2):





Full length immunoblot replicates from figure 6F (SOD3):



*SOD3 blots reprobed from SOD2 so actins are the same*

Full length immunoblot replicates from figure 6F (Catalase):

